

Product datasheet for **RC216508**

CNG3 (CNGA3) (NM_001079878) Human Tagged ORF Clone

Product data:

Product Type:	Expression Plasmids
Product Name:	CNG3 (CNGA3) (NM_001079878) Human Tagged ORF Clone
Tag:	Myc-DDK
Symbol:	CNG3
Synonyms:	ACHM2; CCNC1; CCNCa; CCNCalpha; CNGG3; CNG3
Mammalian Cell Selection:	Neomycin
Vector:	pCMV6-Entry (PS100001)
E. coli Selection:	Kanamycin (25 ug/mL)



[View online »](#)

ORF Nucleotide
Sequence:

>RC216508 ORF sequence
Red=Cloning site Blue=ORF Green=Tags(s)

TTTTGTAATACGACTCACTATAGGGCGGCCGGGAATTCGTCGACTGGATCCGGTACCGAGGAGATCTGCC
GCCGCGATCGCC

ATGGCCAAGATCAACACCCAATACTCCCACCCCTCCAGGACCCACCTCAAGGTAAGACCTCAGACCGAG
ATCTCAATCGCGCTGAAAATGGCCTCAGCAGAGCCCACTCGTCAAGTGAGGAGACATCGTCAAGTGCATGCTGCA
GCCGGGATCGCCATGGAGACCAGAGGACTGGCTGACTCCGGGCAGGGCTCCTTACCAGCCAGGGGATC
GCCAGGCTGTGCGCCTCATCTTCTGCTGCGCAGGTGGGCTGCCAGGCATGTGCACCACCAGGACCAGG
GACCGGACTCTTTTCTGATCGTTTCCGTGGAGCCGAGCTTAAGGAGGTGCCAGCCAAGAAAGCAATGC
CCAGGCAAATGTGGCAGCCAGGAGCCAGCAGACAGAGGAGAAGGAAGAAGACGAAAAAGAAAGGATGCC
ATCGTGGTGGACCGTCCAGCAACCTGTACTACCGCTGGCTGACCGCCATCGCCCTGCCTGTCTTCTATA
ACTGGTATCTGCTATTTGCAGGGCCTGTTTCGATGAGCTGCAGTCCGAGTACCTGATGCTGTGGCTGGT
CCTGGACTACTCGCAGATGTCTGTATGTCTTGGATGTGCTTGTACGAGCTCGGACAGGTTTTCTCGAG
CAAGGCTTAATGGTCAGTGATACCAACAGGCTGTGGCAGCATTACAAGACGACCAGCAGTTCAAGCTGG
ATGTGTTGTCCCTGGTCCCCACCGACCTGGCTTACTTAAAGGTGGGCACAACTACCCAGAAGTGAGGTT
CAACCGCTACTGAAGTTTTCCCGGCTCTTTGAATTTTTCGACCGCACAGAGACAAGGACCAACTACCCC
AATATGTTCCAGGATGGGAACCTGGTCTTGTACATTCTCATCATCCACTGGAATGCCTGCATCTACT
TTGCCATTTCCAAGTTCATTGGTTTTGGGACAGACTCCTGGGCTACCCAAACATCTCAATCCCAGAGCA
TGGGCGCCTCTCCAGGAAGTACATTTACAGTCTCTACTGGTCCACCTTGACCCTTACCACCATGGTGAG
ACCCACCCCGTGAAGATGAGGAGTATCTCTTTGTGGTCGTAGACTTCTTGGTGGGTGTTCTGATTT
TTGCCACCATTGTGGCAATGTGGCTCCATGATCTCGAATATGAATGCCTCACGGGCAGAGTTCAGGC
CAAGATTGATTCCATCAAGCAGTACATGCAGTTCGCAAGGTACCAAGGACTTGGAGACGCGGGTTATC
CGGTGTTTTGACTACCTGTGGGCAACAAGAAGACGGTGGATGAGAAGGAGGTGCTCAAGAGCCTCCAG
ACAAGCTGAAGGCTGAGATCGCCATCAACGTGCACCTGGACACGCTGAAGAAGGTTGCGATCTTCCAGGA
CTGTGAGGCAGGGCTGCTGGTGGAGCTGGTGTGAAGCTGCGACCCACTGTGTTACGCCCTGGGATTAT
ATCTGCAAGAAGGGAGATATTGGGAAGGAGATGTACATCATCAACGAGGGCAAGCTGGCCGTGGTGGCTG
ATGATGGGGTCAACCGTTCGTGGTCTCAGCGATGGCAGCTATTTGGGGAGATCAGCATTCTGAACAT
CAAGGGGAGCAAGTCGGGAACCGCAGGACGGCCAACATCCGCAGCATTGGCTACTCAGACCTGTTCTGC
CTCTCAAAGGACGATCTCATGGAGGCCCTACCGAGTACCCGAAGCCAAGAAGGCCCTGGAGGAGAAAG
GACGGCAGATCCTGATGAAAGACAACCTGATCGATGAGGAGCTGGCCAGGGCGGGCGGACCCCAAGGA
CCTTGAGGAGAAAGTGGAGCAGCTGGGGTCTCCCTGGACACCCTGCAGACCAGGTTTGCACGCCTCCTG
GCTGAGTACAACGCCACCCAGATGAAGATGAAGCAGCGTCTCAGCCAACCTGGAAAGCCAGGTGAAGGGTG
GTGGGGACAAGCCCTGGCTGATGGGGAAGTCCCGGGGATGCTACAAAAACAGAGGACAAAACAACAG

ACGCGTACGCGGCCGCTCGAGCAGAACTCATCTCAGAAGAGGATCTGGCAGCAAATGATATCCTGGATT
ACAAGGATGACGACGATAAGGTTTAA

Protein Sequence: >RC216508 protein sequence
Red=Cloning site Green=Tags(s)

```

MAKINTQYSHPSRTHLKVKTSRDLNRAENGLSRAHSSSEETSSVLQPGIAMETRGLADSGQGSFTGQGI
ARL SRLIFLLRRWAARHVHHQDQGPDSFPDRFRGAELKEVSSQESNAQANVGSQEPADRGRKKTKKKDA
IVVDPSSNLYRWLTAIALPVFYNWYLLICRACFDELQSEYLMWLVLVDYSADLVYLDVLRVARTGFLE
QGLMVSNTNRLWQHYKTTTQFKLDVLSL VPTDLAYLKVGTNYPEVRFNRLLKFSRLFEFFDRTETRTNY
NMFRIGNLVLYILIIHWNACIYFAISKFIGFGTDSWVYPNISIPHEGRLSRKYIYSLYWSLTLTTTIGE
TPPPVKDEEYLFVVDFLVGVLIFATIVGNVGSMSNMNASRAEFQAKIDSIKQYMQFRKVKTDLETRVI
RWF DYLWANKKTVDEKEVLKSLPKLKAIEIAINVHLDLTKKVRIFQDCEAGLLVELVLRPTVFPSPGDY
ICKKGDIGKEMYIINEGKLAVVADDGVTQFVVLSDGSYFGEISILNKGSKSGNRRTANIRSIGYSDLFC
LSKDDLMEALTEYPEAKKALEEKGRQILMKDNLIDEELARAGADPKDLEEKVEQLGSSLDLQTRFARLL
AEYNATQMKMKQRLSQLESQVKGGGDKPLADGEVPGDATKTEDKQ
    
```

TRTRPLEQKLISEEDLAANDILDYKDDDDKV

Chromatograms: https://cdn.origene.com/chromatograms/mk6554_d08.zip

Restriction Sites: SgfI-MluI

Cloning Scheme:



ACCN: NM_001079878

ORF Size: 2028 bp

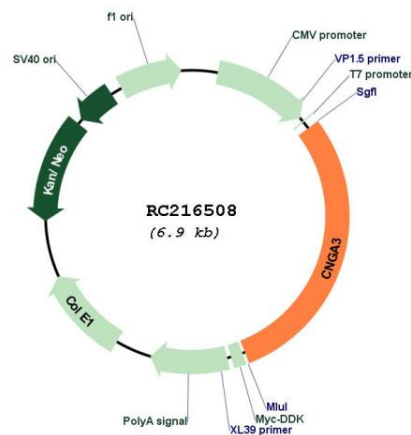
OTI Disclaimer: The molecular sequence of this clone aligns with the gene accession number as a point of reference only. However, individual transcript sequences of the same gene can differ through naturally occurring variations (e.g. polymorphisms), each with its own valid existence. This clone is substantially in agreement with the reference, but a complete review of all prevailing variants is recommended prior to use. [More info](#)

OTI Annotation: This clone was engineered to express the complete ORF with an expression tag. Expression varies depending on the nature of the gene.

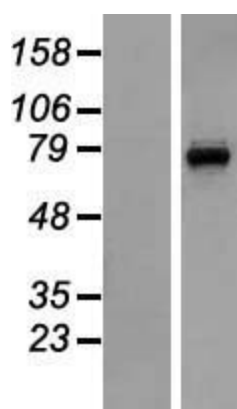
Components: The ORF clone is ion-exchange column purified and shipped in a 2D barcoded Matrix tube containing 10ug of transfection-ready, dried plasmid DNA (reconstitute with 100 ul of water).

Reconstitution Method:	<ol style="list-style-type: none">1. Centrifuge at 5,000xg for 5min.2. Carefully open the tube and add 100ul of sterile water to dissolve the DNA.3. Close the tube and incubate for 10 minutes at room temperature.4. Briefly vortex the tube and then do a quick spin (less than 5000xg) to concentrate the liquid at the bottom.5. Store the suspended plasmid at -20°C. The DNA is stable for at least one year from date of shipping when stored at -20°C.
RefSeq:	NM_001079878.1 , NP_001073347.1
RefSeq Size:	3794 bp
RefSeq ORF:	2031 bp
Locus ID:	1261
UniProt ID:	Q16281
Cytogenetics:	2q11.2
Protein Families:	Druggable Genome, Ion Channels: Cyclic nucleotide gated, Transmembrane
Protein Pathways:	Olfactory transduction
MW:	76.9 kDa
Gene Summary:	This gene encodes a member of the cyclic nucleotide-gated cation channel protein family which is required for normal vision and olfactory signal transduction. Mutations in this gene are associated with achromatopsia (rod monochromacy) and color blindness. Two alternatively spliced transcripts encoding different isoforms have been described. [provided by RefSeq, Jul 2008]

Product images:



Circular map for RC216508



Western blot validation of overexpression lysate (Cat# [LY421573]) using anti-DDK antibody (Cat# [TA50011-100]). Left: Cell lysates from untransfected HEK293T cells; Right: Cell lysates from HEK293T cells transfected with RC216508 using transfection reagent MegaTran 2.0 (Cat# [TT210002]).