

Product datasheet for **RC216507**

LGR6 (NM_001017404) Human Tagged ORF Clone

Product data:

Product Type:	Expression Plasmids
Product Name:	LGR6 (NM_001017404) Human Tagged ORF Clone
Tag:	Myc-DDK
Symbol:	LGR6
Synonyms:	GPCR; VTS20631
Mammalian Cell Selection:	Neomycin
Vector:	pCMV6-Entry (PS100001)
E. coli Selection:	Kanamycin (25 ug/mL)



[View online »](#)

ORF Nucleotide Sequence:

>RC216507 representing NM_001017404
 Red=Cloning site Blue=ORF Green=Tags(s)

TTTTGTAATACGACTCACTATAGGGCGGCCGGGAATTCGTCGACTGGATCCGGTACCGAGGAGATCTGCC
 GCC**CGGATCGCC**

ATGCGCTTGGAGGAGAGGGCCGCTCAGCGAGGGCGGACAGAACCTCTCCGGGCTGGGAGTGCACGGC
 GCGGTGCCCCAGGGACCTCAGCATGAACAACCTCACAGAGCTTACGCTGGCCTTCCACCACCTGCG
 CTTCTTGGAGGAGCTGCGTCTCTCTGGGAACCATCTCTCACACATCCCAGGACAAGCATTCTCTGGTCTC
 TACAGCCTGAAAACTCTGATGCTGCAGAACATCAGCTGGGAGGAATCCCCGAGAGGCGCTGTGGGAGC
 TGCCGAGCCTGCAGTCGCTAGACCTGAATTATAACAAGCTGCAGGAGTTCCTGTGGCCATCCGGACCT
 GGGCAGACTGCAGGAAGTGGGGTCCATAACAACAACATCAAGGCCATCCCAGAAAAGGCCCTTCATGGGG
 AACCTCTGCTACAGACGATACACTTTTATGATAACCCAATCCAGTTTGTGGGAAGATCGGCATTCCAGT
 ACCTGCCTAAACTCCACACACTATCTCTGAATGGTGCCATGGACATCCAGGAGTTCCAGATCTCAAAGG
 CACCACAGCCTGGAGATCCTGACCCTGACCCGCGCAGGCATCCGGCTGCTCCCATCGGGGATGTGCCAA
 CAGCTGCCAGGCTCCGAGTCTGGAAGTGTCTACAATCAAATTGAGGAGCTGCCAGCCTGCACAGGT
 GTCAGAAATTGGAGGAAATCGGCCCTCAACACAACCGCATCTGGGAAATTGGAGCTGACACCTTCAGCCA
 GCTGAGCTCCCTGCAAGCCCTGGATCTTAGCTGGAACGCCATCCGGTCCATCCACCCGAGGCCCTTCTCC
 ACCCTGCACTCCCTGGTCAAGCTGGACCTGACAGACAACAGCTGACCACACTGCCCTGGCTGGACTTG
 GGGGCTTGATGCATCTGAAGCTCAAAGGAACTTGTCTCTCCAGGCCCTTCTCCAAGGACAGTTTCCC
 AAAACTGAGGATCCTGGAGTGCCTTAGCCTACCAGTGTCCCTATGGGATGTGTCCAGCTTCTTC
 AAGGCCCTGGGAGTGGGAGGCTGAAGACCTTACCTTGATGATGAGGAGTCTCAAAAAGGCCCTGG
 GCCTCCTTGGCAGACAAGCAGAGAACCCTATGACCAGGACCTGGATGAGCTCCAGTGGAGATGGAGGA
 CTCAAAGCCACACCCAGTGTCCAGTGTAGCCCTACTCCAGGCCCTTCAAGCCCTGTGAGTACCTTTT
 GAAAGCTGGGGCATCCGCTGGCCGTGTGGCCATCGTGTGCTCTCCGTGCTCTGCAATGGACTGGTGC
 TGCTGACCGTGTTCGCTGGCGGGCTGTCCCTGCCCCCGTCAAGTTTGTGGTAGGTGCGATTGCAGG
 CGCCAACACCTTGACTGGCATTCTGTGGCCTTCTAGCCTCAGTCGATGCCCTGACCTTTGGTCAGTTC
 TCTGAGTACGGAGCCCGCTGGGAGACGGGGCTAGGCTGCCGGGCACTGGCTTCTGGCAGTACTGGGT
 CGGAGGCATCGGTGCTGCTCACTCTGGCCGAGTGCAGTGCAGCGTCTCCGTCTCTGTGTCCGGGC
 CTATGGGAAGTCCCCCTCCCTGGGCAGCGTTCGAGCAGGGGTCTAGGCTGCCTGGCACTGGCAGGGCTG
 GCCGCCGCGCTGCCCTGGCCTCAGTGGGAGAATACGGGGCTCCCACTCTGCCTGCCCTACGCGCCAC
 CTGAGGGTCAGCCAGCAGCCCTGGGCTTACCCTGGCCCTGGTGTGATGAACTCCTTCTGTTTCCCTGGT
 CGTGGCCGGTGCCTACATCAAAGTACTGTGACCTGCCCGGGGCGACTTTGAGGCCGTGTGGACTGC
 GCCATGGTGGGACAGTGGCCTGGCTCATCTTCGAGACGGGCTCCTCTACTGTCCCGTGGCCTTCTCA
 GCTTTGCTCCATGCTGGGCCTTCCCTGTACGCCCCGAGGCCGTCAAGTCTGTCTGTGGTGGTGTCT
 GCCCTGCCTGCCTGCCTCAACCACTGCTGTACTGCTCTTCAACCCCACTTCCGGGATGACCTTCGG
 CGGCTTCGGCCCCGCGCAGGGGACTCAGGGCCCTAGCCTATGCTGCGGCCGGGAGCTGGAGAAGAGCT
 CCTGTGATTCTACCCAGGCCCTGGTAGCCTTCTCTGATGTGGATCTCATTCTGGAAGCTTCTGAAGCTGG
 GCGGCCCTGGGCTGGAGACCTATGGCTTCCCCTCAGTGACCCTCATCTCCTGTCAGCAGCCAGGGGCC
 CCCAGGCTGGAGGCAGCCATTGTGTAGAGCCAGAGGGGAACCACTTTGGGAACCCCAACCTCCATGG
 ATGGAGAAGTGTCTGAGGGCAGAGGGATCTACGCCAGCAGGTGGAGGCTTGTACAGGGGTGGCGGCTT
 TCAGCCCTCTGGCTTGGCCTTGTCTCACACGTG

ACGCGTACGCGGCCGCTCGAGCAGAACTCATCTCAGAAGAGGATCTGGCAGCAAATGATATCCTGGATT
 ACAAGGATGACGACGATAAGGTTTAA

Protein Sequence: >RC216507 representing NM_001017404
Red=Cloning site Green=Tags(s)

MRLEGEGRSARAGQNL SRAGSARRGAPRDL SMNNL TELQPGLFHHLRFLEELRLSGNHLSHIPGQAFSGL
YSLKILMLQNNQLGGIPAEALWELPSLQSLDLNYNKLQEFVVAIRTLGRLQELGFHNNNIKAIPEKAFMG
NPLLQTIHFYDNPIQFVGRSAFQYLPKLHTLSLNGAMDIQEFDLKGTTSLEILTLTRAGIRLLPSGMCQ
QLPRLRVLEL SHNQIEELPSLHRCQKLEEIGLQHNRIWEIGADTFSQLSSLQALDLSWNAIRSIHPEAFS
TLHSLVKLDLTDNQLTTLPLAGLGGLMHLKLGKGNLALSQAFSKDSFPKLRILEVPYAYQCCPYGMCAFF
KASGQWEAEDLHLDDEESSKRPLGLLARQAENHYDQDLDELQLEMEDSKPHPSVQCSPTPGPFKPCYELF
ESWGIRLAVWAI VLLSVLCNGLVLLTVFAGGPVPLPPVKFVVGAIAGANTLTGISCGLLASVDALTFGQF
SEYGARWETGLGCRATGFLAVLGSEASVLLL TAAVQCSVSVSCVRAYGKSPSLGSRAGVLGCLALAGL
AAALPLASVGEYGASPLCLPYAPPEGQPAALGFTVALVMMNSFCFLVAGAYIKLYCDLPRGDFEAVWDC
AMVRHVAWLIFADGLLYCPVAFLSFASMLGLFPVTPEAVKSVLLVVLPLPACLNPLLYLLFNPHFRDDL
RLRPRAGDSGPLAYAAAGELEKSSCDSTQALVAFSDVDLILEASEAGRPPGLETYGFPSVTLISCQQPGA
PRLEGSHCVEPEGNHFGNPQPSMDGELLLRAEGSTPAGGGLSGGGGFQPSGLAFASHV

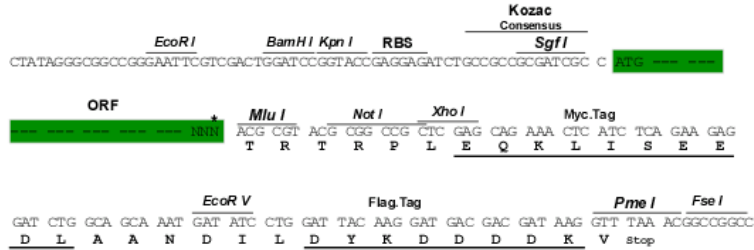
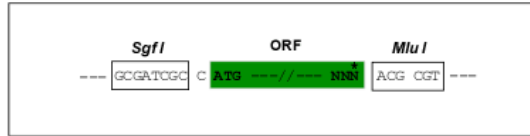
TRTRPLEQKLI SEEDLAANDILDYKDDDDKV

Chromatograms: https://cdn.origene.com/chromatograms/ja2639_c02.zip

Restriction Sites: Sgfl-MluI

Cloning Scheme:

Cloning sites used for ORF Shuttling:



* The last codon before the Stop codon of the ORF

ACCN: NM_001017404

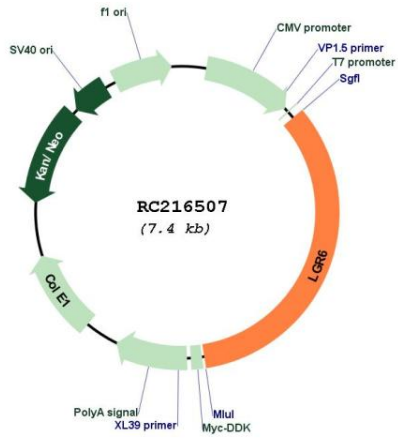
ORF Size: 2484 bp

OTI Disclaimer: Due to the inherent nature of this plasmid, standard methods to replicate additional amounts of DNA in E. coli are highly likely to result in mutations and/or rearrangements. Therefore, OriGene does not guarantee the capability to replicate this plasmid DNA. Additional amounts of DNA can be purchased from OriGene with batch-specific, full-sequence verification at a reduced cost. Please contact our customer care team at custsupport@origene.com or by calling 301.340.3188 option 3 for pricing and delivery.

The molecular sequence of this clone aligns with the gene accession number as a point of reference only. However, individual transcript sequences of the same gene can differ through naturally occurring variations (e.g. polymorphisms), each with its own valid existence. This clone is substantially in agreement with the reference, but a complete review of all prevailing variants is recommended prior to use. [More info](#)

OTI Annotation:	This clone was engineered to express the complete ORF with an expression tag. Expression varies depending on the nature of the gene.
Components:	The ORF clone is ion-exchange column purified and shipped in a 2D barcoded Matrix tube containing 10ug of transfection-ready, dried plasmid DNA (reconstitute with 100 ul of water).
Reconstitution Method:	<ol style="list-style-type: none">1. Centrifuge at 5,000xg for 5min.2. Carefully open the tube and add 100ul of sterile water to dissolve the DNA.3. Close the tube and incubate for 10 minutes at room temperature.4. Briefly vortex the tube and then do a quick spin (less than 5000xg) to concentrate the liquid at the bottom.5. Store the suspended plasmid at -20°C. The DNA is stable for at least one year from date of shipping when stored at -20°C.
RefSeq:	<u>NM_001017404.1, NP_001017404.1</u>
RefSeq Size:	3041 bp
RefSeq ORF:	2487 bp
Locus ID:	59352
UniProt ID:	<u>Q9HBX8</u>
Cytogenetics:	1q32.1
Protein Families:	Druggable Genome, Transmembrane
MW:	89.8 kDa
Gene Summary:	This gene encodes a member of the leucine-rich repeat-containing subgroup of the G protein-coupled 7-transmembrane protein superfamily. The encoded protein is a glycoprotein hormone receptor with a large N-terminal extracellular domain that contains leucine-rich repeats important for the formation of a horseshoe-shaped interaction motif for ligand binding. Alternative splicing of this gene results in multiple transcript variants. [provided by RefSeq, Jul 2008]

Product images:



Circular map for RC216507