

Product datasheet for RC216506

WIPI2 (NM_001033520) Human Tagged ORF Clone

Product data:

Product Type: Expression Plasmids
Product Name: WIPI2 (NM_001033520) Human Tagged ORF Clone
Tag: Myc-DDK
Symbol: WIPI2
Synonyms: ATG18B; Atg21; CGI-50; IDDSSA; WIPI-2
Mammalian Cell Selection: Neomycin
Vector: pCMV6-Entry (PS100001)
E. coli Selection: Kanamycin (25 ug/mL)
ORF Nucleotide Sequence: >RC216506 representing NM_001033520
Red=Cloning site Blue=ORF Green=Tags(s)

TTTTGTAATACGACTCACTATAGGGCGCCGGGAATTCGTCGACTGGATCCGGTACCGAGGAGATCTGCC
GCC**CGATCGCC**

ATGTTACGCATGTACTTCCCTTTGTGATTTAGCCGATACGGAAGATGTGTGCATTGTAGAGAGATTGT
TCTCCAGCAGCCTAGTGGCCATCGTCAGCCTTAAAGCACCAGGAAGCTAAAGTTTGCCACTTTAAGAA
GGGAAGTGAATCTGCAACTACAGCTACTCCAACAGATTCTGGCTGTGAAGCTCAACAGGCAGAGGCTG
ATAGTATGCCTGGAGGAGTCCCTGTACATCCACAACATTCGGGACATGAAGGTGCTGCATACGATCAGG
AGACGCCTCCAAACCCTGCAGGCCTGTGTGCGCTGTCAATCAACAACGACAACCTGCTACTTGGCGTACCC
AGGGAGCGGACCATCGGAGAGGTGCAGGTCTTCGATACCATAATTTGAGAGCTGCAAACATGATTCGG
GCTCAGCAGAGTCTTTAGCGGCACTGGCCTTTGACGCAAGTGGAACTAACTTGCCACGGCTTCGGAGA
AGGGGACCGTGATTAGGGTATTTCCATTCAGAAAGGACAAAACTCTTTGAGTTTCGGAGAGGAGTAAA
GAGGTGCGTGAGCATCTGCTCCCTGGCCTTCAGCATGGACGGCATGTTCTCTCCGCCTCCAGCAACACT
GAGACCGTGCACATCTTCAAACCTCGAGACTGTGAAAGAAAAACCCAGAGGAGCCACCACCTGGACCG
GGTACTTCGGGAAAGTGCTCATGGCCTCCACCAGCTACCTGCCTCCCAAGTGACAGAAATGTTCAACCA
GGGCAGAGCCTTCGCCACGGTCCGCCTGCCATTCGCGCCACAAAAACATCTGCTCGTAGCCACAATT
CAGAAGATCCCAGGTTGTTGGTGGTGCCGCCGACGGTACCTGTACATGTACAACCTGGACCCCGAGG
AGGGCGGCGAGTGTGCCCTGATGAAGCAGCACCGGCTGGACGGCAGTCTGGAAACGACCAATGAGATCTT
GGACTCTGCCTCTCAGACTGCCCTTAGTCACTCAGACATACGGCGCAGCTGCAGGAAAAGCCTACACA
GACGACCTGGGTGCTGTGGGTGGCGCCTGCCTGGAGGACGAGGCCAGCGCCTGCCTGGATGAGGACA
GCGAGCACCCGCCATGATTCTTCGGACTGAC

ACGCGTACGCGGCCGCTCGAGCAGAAACTCATCTCAGAAGAGGATCTGGCAGCAATGATATCCTGGATT
ACAAGGATGACGACGATAAGGTTTAA



[View online >](#)

Protein Sequence: >RC216506 representing NM_001033520
Red=Cloning site Green=Tags(s)

MFTHVLPFVISADTEDVCIVERLFFSSSLVAIVSLKAPRKLKLVCHFVKKGTEICNYSYSNTILAVKLNQRQL
 IVCLEESLYIHNIRDMKVLHTIRETPNPAGLCALSINNDNCYLAYPGSATIGEVQVFDITNLRAANMIP
 AHDSPLAALAFDASGTLATASEKGTVIRVFSIPEGQKLFEFRRGVKRCVSIKSLAFSMDGMFLSASSNT
 ETVHIFKLETVKEKPPEEPTTWTGYFGKVLMASTSYLPSQVTEMFNQGRAFATVRLPFCGHKNICSLATI
 QKIPRLLVGAADGYLYMYNLDPQEGGECALMKQHRLDGSLETTNEILDSASHDCPLVTQTYGAAAGKAYT
 DDLGAVGGACLEDEASALRLDEDESEHPPMILRTD

TRTRPLEQKLISEEDLAANDILDYKDDDDKV

Chromatograms: https://cdn.origene.com/chromatograms/mk8056_b12.zip

Restriction Sites: SgfI-MluI

Cloning Scheme:



* The last codon before the Stop codon of the ORF

ACCN: NM_001033520

ORF Size: 1152 bp

OTI Disclaimer: The molecular sequence of this clone aligns with the gene accession number as a point of reference only. However, individual transcript sequences of the same gene can differ through naturally occurring variations (e.g. polymorphisms), each with its own valid existence. This clone is substantially in agreement with the reference, but a complete review of all prevailing variants is recommended prior to use. [More info](#)

OTI Annotation: This clone was engineered to express the complete ORF with an expression tag. Expression varies depending on the nature of the gene.

Components: The ORF clone is ion-exchange column purified and shipped in a 2D barcoded Matrix tube containing 10ug of transfection-ready, dried plasmid DNA (reconstitute with 100 ul of water).

Reconstitution Method:

1. Centrifuge at 5,000xg for 5min.
2. Carefully open the tube and add 100ul of sterile water to dissolve the DNA.
3. Close the tube and incubate for 10 minutes at room temperature.
4. Briefly vortex the tube and then do a quick spin (less than 5000xg) to concentrate the liquid at the bottom.
5. Store the suspended plasmid at -20°C. The DNA is stable for at least one year from date of shipping when stored at -20°C.

RefSeq: [NM_001033520.1](#), [NP_001028692.1](#)

RefSeq Size: 4295 bp

RefSeq ORF: 1155 bp

Locus ID: 26100

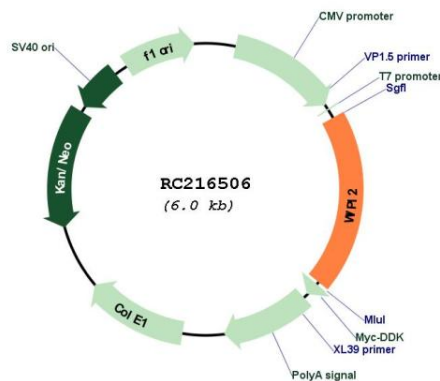
UniProt ID: [Q9Y4P8](#)

Cytogenetics: 7p22.1

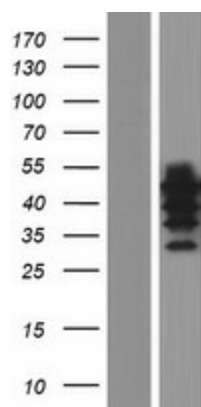
MW: 41.9 kDa

Gene Summary: WD40 repeat proteins are key components of many essential biologic functions. They regulate the assembly of multiprotein complexes by presenting a beta-propeller platform for simultaneous and reversible protein-protein interactions. Members of the WIPI subfamily of WD40 repeat proteins, such as WIPI2, have a 7-bladed propeller structure and contain a conserved motif for interaction with phospholipids (Proikas-Cezanne et al., 2004 [PubMed 15602573]).[supplied by OMIM, Mar 2008]

Product images:



Circular map for RC216506



Western blot validation of overexpression lysate (Cat# [LY422379]) using anti-DDK antibody (Cat# [TA50011-100]). Left: Cell lysates from untransfected HEK293T cells; Right: Cell lysates from HEK293T cells transfected with RC216506 using transfection reagent MegaTran 2.0 (Cat# [TT210002]).