

## Product datasheet for **RC216505**

### **IRF5 (NM\_001098628) Human Tagged ORF Clone**

#### **Product data:**

Product Type:	Expression Plasmids
Product Name:	IRF5 (NM_001098628) Human Tagged ORF Clone
Tag:	Myc-DDK
Symbol:	IRF5
Synonyms:	interferon regulatory factor 5; SLEB10
Mammalian Cell Selection:	Neomycin
Vector:	pCMV6-Entry (PS100001)
E. coli Selection:	Kanamycin (25 ug/mL)



[View online »](#)

**ORF Nucleotide Sequence:**

>RC216505 representing NM\_001098628  
 Red=Cloning site Blue=ORF Green=Tags(s)

TTTTGTAATACGACTCACTATAGGGCGGCCGGAATTCGTCGACTGGATCCGGTACCGAGGAGATCTGCC  
 GCC**GCGATCGCC**

ATGAACCAGTCCATCCCAGTGGCTCCCACCCACCCCGCGCTGCGGCTGAAGCCCTGGCTGGTGCC  
 AGGTGAACAGCTGCCAGTACCCAGGCTTCAATGGGTCAACGGGAAAAGAAATTATTCTGCATCCCTG  
 GAGGCATGCCACAAGGCATGGTCCCAGCCAGGACGGAGATAACACCATCTTCAAGCCTGGGCAAGGAG  
 ACAGGGAAATACACCGAAGGCGTGGATGAAGCCGATCCGGCCAAGTGAAGGCCAACCTGCGCTGTGCC  
 TTAACAAGAGCCGGGACTTCCGCTCATCTACGACGGGCCCGGACATGCCACCTCAGCCCTACAAGAT  
 CTACGAGGTCTGCTCCAATGGCCCTGCTCCACAGACTCCAGCCCTGAGGATTACTCTTTTGGTGCA  
 GGAGAGGAGGAGAAGAAGGAAGAGCTGCAGAGGATGTTGCCAAGCCTGAGCCTCACAGAGGATGTCA  
 AGTGGCCGCCACTCTGCAGCCGCCACTCTGCAGCCGCCGTTGGTGGTGGTCCCCTGCTCCAGACCC  
 CAGCCCCCTGGCTCCTCCCCTGGCAACCTGCTGGCTTCAAGGAGCTTCTCTCTGAGGCTCTGGAGCCT  
 GGGCCCCCTGCCTGCCAGCCTGCCCTGCAGGCGAACAGCTCCTGCCAGACCTGTGATCAGCCCCACA  
 TGCTGCCTCTGACCGACCTGGAGATCAAGTTTCACTACCGGGGGCGGCCACCCCGGGCCCTCACCATCAG  
 CAACCCCATGGCTGCCGGCTCTTCTACAGCCAGCTGGAGGCCACCCAGGAGCAGGTGGAACCTTTCGCG  
 CCCATAAGCCTGGAGCAAGTGCCTTCCCAGCCCTGAGGACATCCCAGTGACAAGCAGCGCTTCTACA  
 CGAACCAGCTGCTGGATGCTGGACCGCGGGCTCATCTCCAGCTACAGGGCCAGGACCTTTATGCCAT  
 CCGCTGTGTCAAGTGTCTGGAGCGGGCTCATCTCCAGCTACAGGGCCAGGACCTTTATGCCAT  
 ATCCAGCGGGAGGTCAAGACCAAGCTTTTCAAGCTGGAGATCTTCTCTGCTTTGGGGAAGAATGCCCTGACC  
 AGCCGAGACCAACACCCACCCCTCGAGATCTTCTCTGCTTTGGGGAAGAATGCCCTGACC  
 ACCCCGAGAGAAGAAGCTCATTACTGTACAGGTGGTGCCTGTAGCAGCTCGACTGCTGGAGATGTTT  
 TCAGGGGAGCTATCTGGTCAAGTGTATCCGGCTACAGATCTCAAACCCAGACCTCAAAGACCGCA  
 TGGTGGAGCAATTCAAGGAGCTCCATCACATCTGGCAGTCCCAGCAGCGTTGCAGCCTGTGGCCAGGC  
 CCTCCTGGAGCAGGCTTGGTGTGGCCAGGGCCCTGGCTATGCACCCAGCTGGCATGCAA

**ACGCGT**ACGCGGCCGCTCGAGCAGAACTCATCTCAGAAGAGGATCTGGCAGCAAATGATATCTGGATT  
 ACAAGGATGACGACGATAAGGTTTAA

**Protein Sequence:**

>RC216505 representing NM\_001098628  
 Red=Cloning site Green=Tags(s)

MNQSI PVAPT PPRRRLK PVLVAQVNSCQYPGLQWVNGEKKLFCIPWRHATRHGPSQDGDNTIFKAWAKE  
 TGKYTEGVDEADPAKWKANLRCALNKSDFRLIYDGRDMPQPQYKIYEVCSNGPAPTDSQPPEDYSFGA  
 GEEEEEEELQRMLPSLSLTEDVKWPPTLQPPTLQPPVVLGPPAPDPSPLAPPPGNPAGFRELLSEVLEP  
 GPLPASLPPAGEQLLPDLLISPHMLPLTDLEIKFYRGRPPRALTISNPHGCRFLFYSQLEATQEVELFG  
 PISLEQVRFPSPEDIPSDKQRFYTNQLLDVLDRLILQLQGQDLYAIRLCQCKVFWSGPCASAHDSCPNP  
 IQREVKTKLFSLEHFLNELILFQKQNTNPPPFIEFFCFGEWPDPRKPREKKLITVQVVPVAARLLLEMF  
 SGELSWSADSIQLQISNPDLDKRMVEQFKELHHIWQSQQLQPVAQAPPAGLGVGQGPWPMHPAGMQ

**TR**TRPLEQKLI SEEDLAANDILDYKDDDDKV

**Chromatograms:**

[https://cdn.origene.com/chromatograms/mk6505\\_c10.zip](https://cdn.origene.com/chromatograms/mk6505_c10.zip)

**Restriction Sites:**

Sgfl-Mlul

**Cloning Scheme:**


**ACCN:** NM\_001098628

**ORF Size:** 1464 bp

**OTI Disclaimer:** The molecular sequence of this clone aligns with the gene accession number as a point of reference only. However, individual transcript sequences of the same gene can differ through naturally occurring variations (e.g. polymorphisms), each with its own valid existence. This clone is substantially in agreement with the reference, but a complete review of all prevailing variants is recommended prior to use. [More info](#)

**OTI Annotation:** This clone was engineered to express the complete ORF with an expression tag. Expression varies depending on the nature of the gene.

**Components:** The ORF clone is ion-exchange column purified and shipped in a 2D barcoded Matrix tube containing 10ug of transfection-ready, dried plasmid DNA (reconstitute with 100 ul of water).

**Reconstitution Method:**

1. Centrifuge at 5,000xg for 5min.
2. Carefully open the tube and add 100ul of sterile water to dissolve the DNA.
3. Close the tube and incubate for 10 minutes at room temperature.
4. Briefly vortex the tube and then do a quick spin (less than 5000xg) to concentrate the liquid at the bottom.
5. Store the suspended plasmid at -20°C. The DNA is stable for at least one year from date of shipping when stored at -20°C.

**RefSeq:** [NM\\_001098628.1](#), [NP\\_001092098.1](#)

**RefSeq Size:** 2822 bp

**RefSeq ORF:** 1466 bp

**Locus ID:** 3663

**Cytogenetics:** 7q32.1

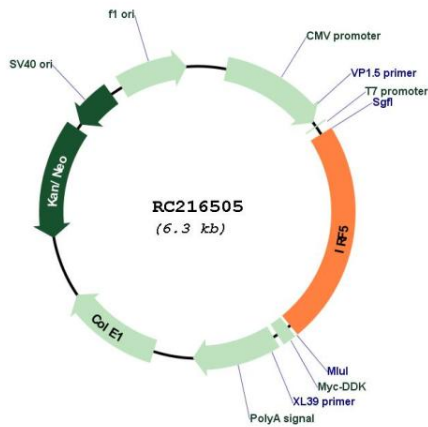
**Protein Families:** Transcription Factors

**Protein Pathways:** Toll-like receptor signaling pathway

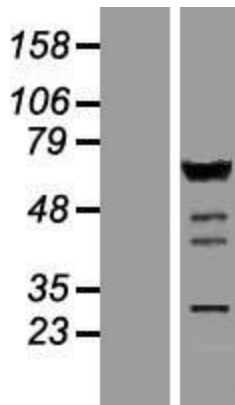
**MW:** 54.8 kDa

**Gene Summary:** This gene encodes a member of the interferon regulatory factor (IRF) family, a group of transcription factors with diverse roles, including virus-mediated activation of interferon, and modulation of cell growth, differentiation, apoptosis, and immune system activity. Members of the IRF family are characterized by a conserved N-terminal DNA-binding domain containing tryptophan (W) repeats. Alternative promoter use and alternative splicing result in multiple transcript variants, and a 30-nt indel polymorphism (SNP rs60344245) can result in loss of a 10-aa segment. [provided by RefSeq, Dec 2016]

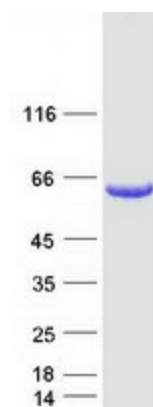
**Product images:**



Circular map for RC216505



Western blot validation of overexpression lysate (Cat# [LY420651]) using anti-DDK antibody (Cat# [TA50011-100]). Left: Cell lysates from untransfected HEK293T cells; Right: Cell lysates from HEK293T cells transfected with RC216505 using transfection reagent MegaTran 2.0 (Cat# [TT210002]).



Coomassie blue staining of purified IRF5 protein (Cat# [TP316505]). The protein was produced from HEK293T cells transfected with IRF5 cDNA clone (Cat# RC216505) using MegaTran 2.0 (Cat# [TT210002]).