

Product datasheet for **RC216504**

CABYR (NM_153768) Human Tagged ORF Clone

Product data:

Product Type:	Expression Plasmids
Product Name:	CABYR (NM_153768) Human Tagged ORF Clone
Tag:	Myc-DDK
Symbol:	CABYR
Synonyms:	CABYRa; CABYRc; CABYRc/d; CABYRe; CBP86; CT88; FSP-2; FSP2
Mammalian Cell Selection:	Neomycin
Vector:	pCMV6-Entry (PS100001)
E. coli Selection:	Kanamycin (25 ug/mL)



[View online »](#)

ORF Nucleotide Sequence:

>RC216504 representing NM_153768
 Red=Cloning site Blue=ORF Green=Tags(s)

TTTTGTAATACGACTCACTATAGGGCGGCCGGGAATTCGTCGACTGGATCCGGTACCGAGGAGATCTGCC
 GCC**CGCATCGCC**

ATGATTTCTTCAAAGCCAGACTTGTCTGACCCATATGGCCTCAAGACTCTGCTCGAGGGAATTAGCAGAG
 CTGTTCTCAAACCAACCCATCAAACATCAACCAAGTTTGCAGCAGCTTATTTTCAAAGAACTACTATGTA
 TAGAGTAGAGAAATGGTCAAGGAACGACACCACAGAAGAAATTAGAATGTTTAAAAAGAACCGAAAA
 ACATCTGTAGAATCTAAAGTACCTACCCAGATGGAAAACTACAGACACAGACGAGGACAATGTAACCA
 GAACAGAAATAGTGACAAAACCCAGTTTCCATCAGTTTATGCTGTGCCAGGCACTGAGCAAACGGA
 AGCAGTTGGTGGTCTTTCTCAAACCAGCCACCCTAAGACTACTACCCACCCTCATCACCACTCCA
 ACAGCTGTCTACCAGAGTTGCTACGTCACGCTGACCCAGCTCAGCTTGCTGCTCAGATGTTAGGTA
 AAGTTTCATCTATTCTGATCAATCTGATGTGTTAATGGTGGATGTGGCAACCAAGTATGCCTGTTGT
 TATCAAGGAGGTCCAAGCTCAGAGGCTGCTGAAGATGTCATGGTGGCTGCTCCTTTGTGTGTTCTGGA
 AAGGTGCTAGAAGTGCAGGTTGTGAACCAACATCTGTCCATGTAGATTTGGGTTCTCAACCTAAAGAAA
 ATGAGGCTGAACCATCAACGGCTTCTCAGTCCCCTTGCAGGATGAACAAGAACCTCCTGCTTATGATCA
 AGCTCCTGAGGCACTTTGCAGGCTGATTTGAGGTTATGTCAACTGTTTATATCATCTGTCTATAAC
 GATGTGCTGTGACTGAAGGAGTTGTTTATATCGAGCAACTGCCAGAACAATAGTTATCCCTTTTACTG
 ATCAAGTTGCTTGTCTTAAAGAAAATGAGCAGTCAAAAGAAAATGAGCAGTCAACACGAGTTAGTCCCAA
 ATCTGTAGTAGAAAAGACCACCTCTGGCATGTCTAAAAATCTGTAGAGTCTGTAAAATGACACAGTTG
 GAGGAGAATGCAAAATATCTCAGTATATGGAGGCAGAAGCAACAGCTCTGCTCTGACACATCTT
 TGAAAGGTCAGCCTGAGGTACCTGCACAACCTGGATGCAGAAGGTGCTATCAAAATAGGCTCTGAAAA
 ATCTCTGCACCTTGAAGTGGAGATCACTTCAATAGTCTCTGACAATACTGGGCAGGAGGAGTCTGGGGAA
 AACTCTGTACCCAGGAGATGGAAGGCAACCTGTGCTCTCTGGGGAAGCTGCAGAAGCAGTGCACCTCAG
 GTACATCTGTAAAGTCATCTAGTGGCCCTTCCCTCCTGCTCCAGAAGGCCTTACTGCACCAGAAATTGA
 ACCAGAAGGGGAATCAACAGCTGAA

ACGCGTACGCGGCCGCTCGAGCAGAACTCATCTCAGAAGAGGATCTGGCAGCAATGATATCCTGGATT
 ACAAGGATGACGACGATAAGGTTTAA

Protein Sequence:

>RC216504 representing NM_153768
 Red=Cloning site Green=Tags(s)

MISSKPRLLVVPYGLKTLLEGISRAVLKTNPSNINQFAAAYFQEL TMYRVEKWSEGTTTPQKLECLKEPGK
 TSVESKVPQMEKSTDDEDNVTRTEYSDKTTQFPSVYAVPGTEQTEAVGGLSSKATPKTTTPSSPPP
 TAVSPEFAYVPADPAQLAAQMLGKVSSIHSDQSDVLMVDVATSMPVVIKEVPSSEAAEDVMVAAPLVCSG
 KVLEVQVVNQTSVHVDLGSQPKENEAEPSTASSVPLQDEQEPPAYDQAPEVTLQADIEVMSTVHISSVYN
 DVPVTEGVVYIEQLPEQIVIPFTDQVACLKENEQSKENEQSPRVSPKSVVEKTTSGMSKKSVESVLAQL
 EENAKYSSVYMEAEATALLSDTSLKGQPEVPAQLLDAEGAIIKIGSEKSLHLEVEITSIVSDNTGQEEESG
 NSVPQEMEGKPVLSGEEAEVHSGTSVKSSSGPFPPEGLTAPEIEPEGESTAE

TRTRPLEQKLISEEDLAANDILDYKDDDDKV

Chromatograms:

https://cdn.origene.com/chromatograms/mk8062_d03.zip

Restriction Sites:

Sgfl-MluI

Cloning Scheme:

Cloning sites used for ORF Shutting:



* The last codon before the Stop codon of the ORF

ACCN: NM_153768

ORF Size: 1425 bp

OTI Disclaimer: The molecular sequence of this clone aligns with the gene accession number as a point of reference only. However, individual transcript sequences of the same gene can differ through naturally occurring variations (e.g. polymorphisms), each with its own valid existence. This clone is substantially in agreement with the reference, but a complete review of all prevailing variants is recommended prior to use. [More info](#)

OTI Annotation: This clone was engineered to express the complete ORF with an expression tag. Expression varies depending on the nature of the gene.

Components: The ORF clone is ion-exchange column purified and shipped in a 2D barcoded Matrix tube containing 10ug of transfection-ready, dried plasmid DNA (reconstitute with 100 ul of water).

Reconstitution Method:

1. Centrifuge at 5,000xg for 5min.
2. Carefully open the tube and add 100ul of sterile water to dissolve the DNA.
3. Close the tube and incubate for 10 minutes at room temperature.
4. Briefly vortex the tube and then do a quick spin (less than 5000xg) to concentrate the liquid at the bottom.
5. Store the suspended plasmid at -20°C. The DNA is stable for at least one year from date of shipping when stored at -20°C.

RefSeq: [NM_153768.3](#)
RefSeq Size: 2279 bp

RefSeq ORF: 1428 bp

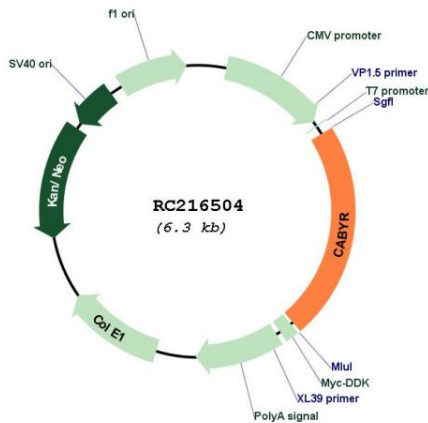
Locus ID: 26256

UniProt ID: [O75952](#)
Cytogenetics: 18q11.2

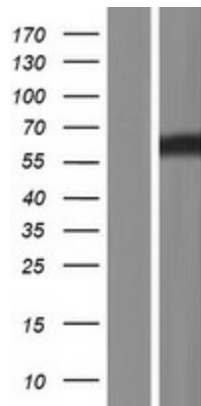
MW: 50.5 kDa

Gene Summary: To reach fertilization competence, spermatozoa undergo a series of morphological and molecular maturational processes, termed capacitation, involving protein tyrosine phosphorylation and increased intracellular calcium. The protein encoded by this gene localizes to the principal piece of the sperm flagellum in association with the fibrous sheath and exhibits calcium-binding when phosphorylated during capacitation. A pseudogene on chromosome 3 has been identified for this gene. Alternatively spliced transcript variants encoding distinct protein isoforms have been found for this gene. [provided by RefSeq, Jul 2013]

Product images:



Circular map for RC216504



Western blot validation of overexpression lysate (Cat# [LY406955]) using anti-DDK antibody (Cat# [TA50011-100]). Left: Cell lysates from untransfected HEK293T cells; Right: Cell lysates from HEK293T cells transfected with RC216504 using transfection reagent MegaTran 2.0 (Cat# [TT210002]).