

Product datasheet for RC216496

C14orf178 (NM_174943) Human Tagged ORF Clone

Product data:

Product Type: Expression Plasmids
Product Name: C14orf178 (NM_174943) Human Tagged ORF Clone
Tag: Myc-DDK
Symbol: C14orf178
Synonyms: FLJ25976; MGC129942
Mammalian Cell Selection: Neomycin
Vector: pCMV6-Entry (PS100001)
E. coli Selection: Kanamycin (25 ug/mL)
ORF Nucleotide Sequence: >RC216496 representing NM_174943
Red=Cloning site Blue=ORF Green=Tags(s)

TTTTGTAATACGACTCACTATAGGGCGGCCGGAATTCGTCGACTGGATCCGGTACCGAGGAGATCTGCC
GCC**CGATCGCC**

ATGGGAAGAGAAATGAAGAAGACTGGTACTCCCAGACCCCTCCGTATCGAGGACCCCAATCAACAACCC
CCTGGCATGATCAACCAGAGATGGGGTCCCCTATTTGCCAGGCTGGTCTTGAAGTCTGGGCTCAAG
CAATCCTCCTGCCTCAGCCTCCCAAAGTCTGGGATTACAGGTGTGAGCCACTGTGCCCGCCCGGAGAA
CATGATCTTAACCATACTGTCTTCCAAGTCAAAGATTCTACCTTTCTAAGACATCTGGAGTCAGACAGAC
CTGAGTCAAGTCTGCCTTCTCCCCTTTACTGAACCTTCAGTGAGTCTTTCTACCTCAGAAGGCTG
TGAGGATGCCATGGGG

ACGCGTACGCGGCCGCTCGAGCAGAACTCATCTCAGAAGAGGATCTGGCAGCAAATGATATCCTGGATT
ACAAGGATGACGACGATAAGGTTTAA

Protein Sequence: >RC216496 representing NM_174943
Red=Cloning site Green=Tags(s)
MGREMKKTGTPRPFRIEDPNQQPTWHDQPEMGSYFAQAGLELLGSSNPPASASQSAGITGVSHCARPGE
HDLNHTVFQVKDSTFLRHLESDRPEFKSCLPPHFTEPSVLSLSTSEGCEAMG

TRTRPLEQKLISEEDLAANDILDYKDDDDKV

Chromatograms: https://cdn.origene.com/chromatograms/mk8016_h09.zip

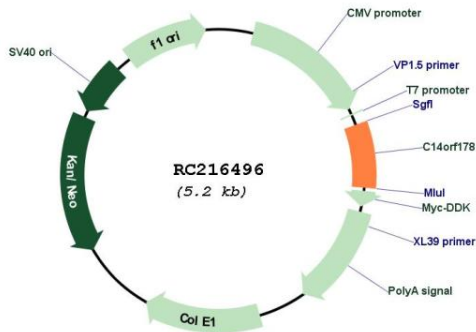
Restriction Sites: SgfI-MluI



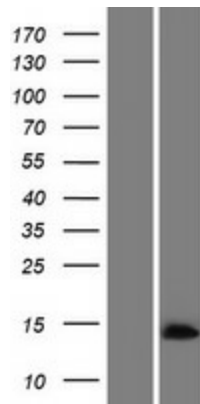
[View online »](#)

MW: 13.2 kDa

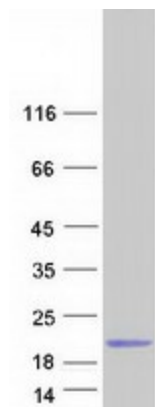
Product images:



Circular map for RC216496



Western blot validation of overexpression lysate (Cat# [LY406344]) using anti-DDK antibody (Cat# [TA50011-100]). Left: Cell lysates from untransfected HEK293T cells; Right: Cell lysates from HEK293T cells transfected with RC216496 using transfection reagent MegaTran 2.0 (Cat# [TT210002]).



Coomassie blue staining of purified C14orf178 protein (Cat# [TP316496]). The protein was produced from HEK293T cells transfected with C14orf178 cDNA clone (Cat# RC216496) using MegaTran 2.0 (Cat# [TT210002]).