

Product datasheet for RC216495

c Maf (MAF) (NM_005360) Human Tagged ORF Clone

Product data:

Product Type:	Expression Plasmids
Product Name:	c Maf (MAF) (NM_005360) Human Tagged ORF Clone
Tag:	Myc-DDK
Symbol:	c Maf
Synonyms:	AYGRP; c-MAF; CCA4; CTRCT21
Mammalian Cell Selection:	Neomycin
Vector:	pCMV6-Entry (PS100001)
E. coli Selection:	Kanamycin (25 ug/mL)
ORF Nucleotide Sequence:	>RC216495 representing NM_005360 Red=Cloning site Blue=ORF Green=Tags(s)

TTTTGTAATACGACTCACTATAGGGCGCCGGGAATTCGTCGACTGGATCCGGTACCGAGGAGATCTGCC
GCC**GCGATCGCC**

ATGGCATCAGAAGTGGCAATGAGCAACTCCGACCTGCCACCAGTCCCCTGGCCATGGAATATGTTAATG
ACTTCGATCTGATGAAGTTTGAAGTAAAAAGGAACCGGTGGAGACCGCATCATCAGCCAGTGC
CCGTCTCATCGCCGGGGCTCGCTGTCTCCACCCCATGAGCAGCCGTGCAGCTCGGTGCCCTTCC
CCCAGCTTCTCGGCGCCAGCCGGGCTCGGGCAGCAGCAGAAGGCGCACCTGGAAGACTACTACTGGA
TGACCGGCTACCCGACGAGCTGAACCCGAGGCGCTGGGCTTCAGCCCCGAGGACGCGGTGAGGCGCT
CATCAGCAACAGCCACCAGCTCCAGGGCGGCTTCGATGGCTACGCGCGCGGGGCGCAGCAGCTGGCCGCG
GCGGCCGGGGCCGGTGCCTGGCGCGCTCCTTGGGCGCAGCGCGGAGGAGATGGGCCCGCCGCGCCGCTGG
TGTCCGCGTGCATCGCCGCGCCGCGCGCAGAGCGGCGGGCCCGCACTACCACCACCACCACCACCA
CGCCCGCCGCCACCACCACCACCCGACGCGCCGCGCGCCCGCGCGCGCGGGCAGCGCGCCGCGCTCGGCC
GGTGGCGCTGGGGCGCGGGCGGGCGGTGGCCCGCCAGCGCTGGGGCGCGGGCGGGCGGGCGGGCGGG
GAGGCGCGGGGGCGGGCGGGGGCGGGGGCGCCCTGCACCCGACACGCGCCGCGCGGGCGCTGCACTT
CGACGACCGCTTCTCCGACGAGCAGCTGGTGACCATGTCTGTGCGGAGCTGAACCGGACGCTGCGCGGG
GTCAGCAAGGAGGAGGTGATCCGGTGAAGCAGAAGAGGCGGACCCTGAAAAACCGCGGCTATGCCAGT
CCTGCCGCTTCAAGAGGGTGCAGCAGACACGTCCTGGAGTCGGAGAAGAACCAGCTGCTGCAGCAAGT
CGACCCTCAAGCAGGAGATCTCCAGGCTGGTGCAGAGAGGACGCGTACAAGGAGAATAACGAGAAG
TTGGTGAGCAGCGGTTCCGAGAAAACGGCTCGAGCAGCGACAACCCGCTCCTCTCCCGAGTTTTTTCATAA
CTGAGCCCACTCGCAAGTTGGAGCCATCAGTGGGATACGCCACATTTTGAAGCCCCAGCATCGTGTACT
TACCAGTGTGTTCAAAAA

AG**CGGACCG**ACGCGTACGCGCCGCTCGAGCAGAACTCATCTCAGAAGAGGATCTGGCAGCAAATGATATCC
TGGATTACAAGGATGACGACGATAAGGTTTAA



[View online »](#)

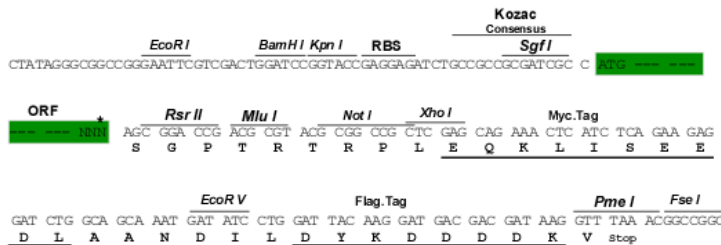
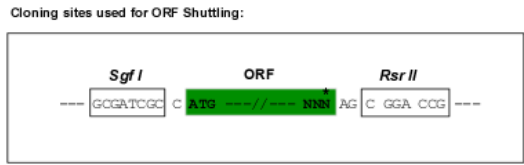
Protein Sequence: >RC216495 representing NM_005360
 Red=Cloning site Green=Tags(s)

MASELAMSNSDLPTSPLAMEYVNDFDLMKFEVKKEPVEDRIISQCGRLIAGGSLSTPMSTPCSSVPPS
 PSFSAPSPGSGSEQKAHLEDYYWMTGYPQQLNPEALGFSPEDAVALISNSHLQGGFDGYARGAQLAA
 AAGAGAGASLGGSGEEMGPAAAVVS AVIAAAAAQSGAGPHYHHHHHAAGHHHPTAGAPGAAGSAAASA
 GGAGGAGGGGPASAGGGGGGGGGGGGAAGAGALHPHHAAGGLHFDDRF SDEQLVTMSVRELNRQLRG
 VSKEEVIRLKQKRRTLKNRGYAQSCRFRVQQRHVLESEKNQLLQQVDHLKQEI SRLVRERDAYKEKYEK
 LVSSGFRENGSSSDNPSSPEFFITEPTRKLEPSVGYATFWKPQHRVLT SVFTK

SGPTRRRL**EQKLI**SEEDLAANDILDYKDDDDKV

Restriction Sites: SgfI-RsrII

Cloning Scheme:



* The last codon before the Stop codon of the ORF

ACCN: NM_005360

ORF Size: 1209 bp

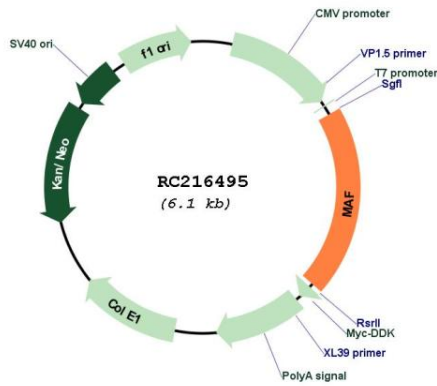
OTI Disclaimer: Due to the inherent nature of this plasmid, standard methods to replicate additional amounts of DNA in E. coli are highly likely to result in mutations and/or rearrangements. Therefore, OriGene does not guarantee the capability to replicate this plasmid DNA. Additional amounts of DNA can be purchased from OriGene with batch-specific, full-sequence verification at a reduced cost. Please contact our customer care team at custsupport@origene.com or by calling 301.340.3188 option 3 for pricing and delivery.

The molecular sequence of this clone aligns with the gene accession number as a point of reference only. However, individual transcript sequences of the same gene can differ through naturally occurring variations (e.g. polymorphisms), each with its own valid existence. This clone is substantially in agreement with the reference, but a complete review of all prevailing variants is recommended prior to use. [More info](#)

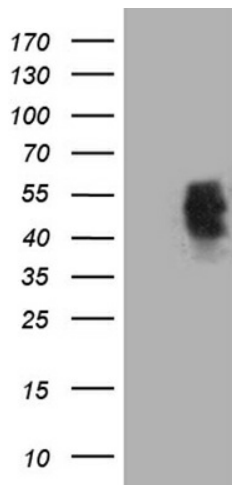
OTI Annotation: This clone was engineered to express the complete ORF with an expression tag. Expression varies depending on the nature of the gene.

Components:	The ORF clone is ion-exchange column purified and shipped in a 2D barcoded Matrix tube containing 10ug of transfection-ready, dried plasmid DNA (reconstitute with 100 ul of water).
Reconstitution Method:	<ol style="list-style-type: none">1. Centrifuge at 5,000xg for 5min.2. Carefully open the tube and add 100ul of sterile water to dissolve the DNA.3. Close the tube and incubate for 10 minutes at room temperature.4. Briefly vortex the tube and then do a quick spin (less than 5000xg) to concentrate the liquid at the bottom.5. Store the suspended plasmid at -20°C. The DNA is stable for at least one year from date of shipping when stored at -20°C.
RefSeq:	<u>NM_005360.5</u>
RefSeq Size:	2161 bp
RefSeq ORF:	1212 bp
Locus ID:	4094
UniProt ID:	<u>O75444</u>
Cytogenetics:	16q23.2
Domains:	bZIP_Maf, BRLZ
Protein Families:	Druggable Genome, Transcription Factors
MW:	41.8 kDa
Gene Summary:	The protein encoded by this gene is a DNA-binding, leucine zipper-containing transcription factor that acts as a homodimer or as a heterodimer. Depending on the binding site and binding partner, the encoded protein can be a transcriptional activator or repressor. This protein plays a role in the regulation of several cellular processes, including embryonic lens fiber cell development, increased T-cell susceptibility to apoptosis, and chondrocyte terminal differentiation. Defects in this gene are a cause of juvenile-onset pulverulent cataract as well as congenital cerulean cataract 4 (CCA4). Two transcript variants encoding different isoforms have been found for this gene. [provided by RefSeq, Jan 2010]

Product images:



Circular map for RC216495



HEK293T cells were transfected with the pCMV6-ENTRY control (Cat# [PS100001], Left lane) or pCMV6-ENTRY MAF (Cat# RC216495, Right lane) cDNA for 48 hrs and lysed. Equivalent amounts of cell lysates (5 ug per lane) were separated by SDS-PAGE and immunoblotted with anti-MAF (Cat# [TA812382])(1:2000).