

Product datasheet for **RC216492**

ANGEL2 (NM_144567) Human Tagged ORF Clone

Product data:

Product Type:	Expression Plasmids
Product Name:	ANGEL2 (NM_144567) Human Tagged ORF Clone
Tag:	Myc-DDK
Symbol:	ANGEL2
Synonyms:	Ccr4d; KIAA0759L
Mammalian Cell Selection:	Neomycin
Vector:	pCMV6-Entry (PS100001)
E. coli Selection:	Kanamycin (25 ug/mL)



[View online »](#)

ORF Nucleotide Sequence:

>RC216492 representing NM_144567
 Red=Cloning site Blue=ORF Green=Tags(s)

TTTTGTAATACGACTCACTATAGGGCGGCCGGAATTCGTCGACTGGATCCGGTACCGAGGAGATCTGCC
 GCC**CGCATCGCC**

ATGGAAGCCTGGCGCTGTGTGAGGAAGGGCTACGGCCACTGTGTGGTGGGAAGAGGCCGATACCCCATGT
 TTCCCATCACTCGAGGAGTCTGGGCAGAGACTGGACTACACCGTGGGAGAATCTGCAAAGGTGTTGCTG
 GAACAGACATATTTCTAGTTGTATGAGGTGGCCTGGACATTACTCTCGAGCTCCTTACCCATACTTCAGT
 AGTAGGCATTTTTCACTAAATTGGAGACCACCCTGTTTGTGTTGAGTCTAGAACTCAGTTCAGTACTGTA
 ACTGGAGACCTGACAACCTGAGCCAGACATCTTTGATTCTCTCTAGTTACGTCATGAACGCTGAGGG
 AGATGAGCCTTCATCAAAACGAAGAAAACCAAGGTGTGATAAAGCGGAATTGGGAATATATGTAGC
 CATGATAAAGAAAAACGAAGATCCTAGGAGACAAAAATGTTGATCCCAATGTGAAGACAGTGAGAACA
 AGTTTGACTTTTTCAGTGATGTCCTATAATATACTTTTACAAGATTTACTGGAAGATAACTCTCACCTTTA
 TAGACATTTGCCGGCGCCAGTATTACACTGGAGTTTTAGGTTTCCCAATATTCTGAAAGAAATTAACAT
 TTTGATGCAGACGTACTTTGTTTGAAGAAGTTCAAGAAGATCATTATGGAGCAGAGATCAGGCCAAGTT
 TGGAACTACTGGGTTATCACTGTGAATATAAGATGCGGACAGGAAGGAAACCTGATGGCTGTGCTATTTG
 CTTCAAACATTCCAAATTTTCACTCTTGTGAGTGAACCCAGTGGAAATCTTCCGCCCTGATATTTCTCTG
 TTGGACAGAGACAATGTTGGATTAGTTTTACTCTTACAGCCAAAATTCATATGCTGCCTGCCCTGCAA
 TCTGCGTAGCAAATACGCATCTGTTGTATAATCCAAGGCGAGGTGATATTAAGCTGACGCAATTGGCAAT
 GCTACTGGCAGAGATTTCCAGTGTGCCACCAGAAAGATGGCAGCTTCTGCCCTATTGTTATGTGTGGT
 GACTTTAATCTGTTCTGTTTCTCCACTATAGTTTTCATAAAGGAAGGAAAATTTGAATTATGAAGGAC
 TTCCCATAGGAAAGGTACTCTGGCCAGAACAGTCTTACGGGGACAAAGAATTTTATCTATTCAAATTTG
 GCCCCAAACCTAGGTATCTCACAGAACTGTGTATGAGGTACAGCAGGTACCAAAAGTAGAAAAGACA
 GACAGTGATCTGACACAAACACAGCTGAAGCAACAGAGGTCCTAGTGACAGCTGAAAAATTGTCTTCAA
 ATTTACAGCACCATTTTCAGTTTGTCTGTTTATTACATTACTTTCTGACACTGGAATTCAGAAAGT
 GACCACCTGTCATTCCCGAAGTGCCATAACTGTGGATTATATTTTCTACTCTGCAGAAAAGGAAGATGTT
 GCTGGGCACCCAGGAGCTGAAGTTGCTTTGGTGGCTTGAACCTTCTAGCTAGACTGCACTTCTTA
 CAGAACAAGACTTATGGACTGTTAATGGACTTCCAACGAAAATAACTCTTCAGATCATCTGCCTTTATT
 GGCAAAGTTCAGACTTGAGCTC

ACGCGTACGCGGCCGCTCGAGCAGAAACTCATCTCAGAAGAGGATCTGGCAGCAAATGATATCCTGGATT
 ACAAGGATGACGACGATAAGGTTTAA

Protein Sequence:

>RC216492 representing NM_144567
 Red=Cloning site Green=Tags(s)

MEAWRCVRKGYGHCVVGRGRYPMPFHRSRSLGRDWTPWENLQRCWNRHISSCMRWPGHYSRAPYPYFS
 SRHFSLNWRPPCLFESRTQFYCNWRPDNLSQTSLIHLSSYVMNAEGDEPSSKRRKHQGVIKRNWEYICS
 HDKEKTKILGDKNVDPKCEDSENKFDVSVMSYNILSQDLLEDNSHLRHCRRPVLHWSFRFPNLIKIKH
 FDADVLCLEQVQEDHYGAEIRPSLESYGHYCEYKMRTRGRKPDGCAICFKHSHKFSLLSVNPVEFFRPDISL
 LDRDNVGLVLLLQPKIPYAACPAICVANTHLLYNPRRGDIKLTQLAMLLAEISSVAHQKDGFSFCPIVMCG
 DFNSVPGSPLYSFIKEGKLNIEGLPIGKVSQEQSSRGQRILSIPIWPPNLGISQNCVYEVQVQVPEKT
 DSDLTQTQLKQTEVLVTAEKLSNLQHHFSLSSVYSHYFPDTGIPEVTTCHSRSAITVDYIFYSAEKEDV
 AGHPGAEVALVGGLKLLARLSLLTEQDLWTVNGLPNENNSDHLPLLAKFRLEL

TRTRPLEQKLISEEDLAANDILDYKDDDDKV

Chromatograms:

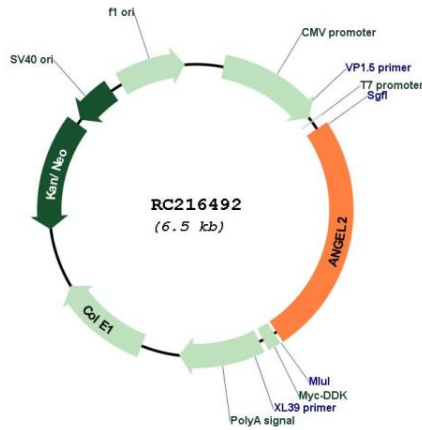
https://cdn.origene.com/chromatograms/mg3989_c01.zip

Restriction Sites:

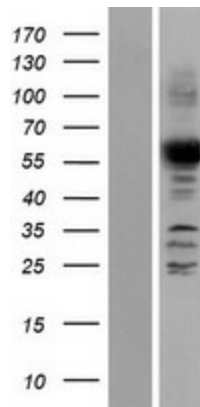
Sgfl-Mlul

Cytogenetics: 1q32.3
 MW: 62.2 kDa

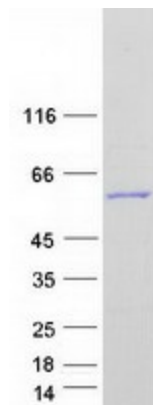
Product images:



Circular map for RC216492



Western blot validation of overexpression lysate (Cat# [LY408277]) using anti-DDK antibody (Cat# [TA50011-100]). Left: Cell lysates from untransfected HEK293T cells; Right: Cell lysates from HEK293T cells transfected with RC216492 using transfection reagent MegaTran 2.0 (Cat# [TT210002]).



Coomassie blue staining of purified ANGEL2 protein (Cat# [TP316492]). The protein was produced from HEK293T cells transfected with ANGEL2 cDNA clone (Cat# RC216492) using MegaTran 2.0 (Cat# [TT210002]).