

Product datasheet for **RC216491**

SCRN3 (NM_024583) Human Tagged ORF Clone

Product data:

Product Type:	Expression Plasmids
Product Name:	SCRN3 (NM_024583) Human Tagged ORF Clone
Tag:	Myc-DDK
Symbol:	SCRN3
Synonyms:	SES3
Mammalian Cell Selection:	Neomycin
Vector:	pCMV6-Entry (PS100001)
E. coli Selection:	Kanamycin (25 ug/mL)



[View online »](#)

ORF Nucleotide Sequence:

>RC216491 ORF sequence
 Red=Cloning site Blue=ORF Green=Tags(s)

TTTTGTAATACGACTCACTATAGGGCGGCCGGAATTCGTCGACTGGATCCGGTACCGAGGAGATCTGCC
 GCC**CGCATCGCC**

ATGGAACCTTTTTCTGTGACACTTTCGTGGCATTACCTCCAGCAACAGTCGATAACAGGATTATTTTTG
 GAAAAAATTCAGATAGACTCTATGATGAAGTACAAGAGGTGGTTTATTTTCTGCTGTAGTTCATGATAA
 CCTGGGAGAACGTCTTAAGTGTACATATATAGAAATTGATCAAGTTCCTGAAACATATGCTGTTGCCTG
 AGTCGCCACGCGTGGTTGTGGGGGCAGAAATGGGAGCCAATGAGCATGGAGTTTGCATTGGGAATGAAG
 CTGTATGGGGAAGAGAAGAAGTTTGTGATGAAGAAGCACTATTAGGAATGGACCTTGTGACAGCTGGCCT
 TGAAAGAGCTGATACAGCTGAAAAAGCCCTCAATGTCATTGTTGACTTACTAGAAAAATATGGCCAGGGT
 GGAATTCACAGAGGGTAGAATGGTATTTAGCTATCACACAGTTTCTGATAGCTGATAGGAATGAAG
 CCTGGATTCTGGAGACTGCAGGGAAGTACTGGGCAGCAGAAAAAGTACAAGAGGGAGTTCGTAATATTTT
 TAATCAACTTTCCATAACAACCAAGATTGCCCGGAACACCCAGACATGAGAACTATGCTAAGCGGAAA
 GGTGGTGGGATGGTAAAAAGGAGTTTGTATTTGCTGCAGCATATTCCTATCTTGACACAGCCAAGATGA
 TGACTTCAATCAGGCAGATACTGTGAGGGCTACAAGCTTCTAAATAAGCACAAAGGAAATATAACTTTTGA
 AACAAATGATGAAATTTCTTCGAGATAAACCAAGTGGCATTAAATATGGAGGGAGAATTCCTGACCACTGCA
 AGCATGGTTTCTATTTTACCTCAAGACTCCAGCCTTCTTGCATTCACTCTTTACAGGGACTCCTGATC
 CTGAGAGATCTGTTTTAAGCCTTTTCAATTTGTGCCACATATTTCACACTATTGGATACCAGTTCCACC
 AACATTTGAACCTGAAGATCTAGTTAAAAAGAAATCACATTTTAAAGCCTGACAGAAGACACCCACTCTAC
 CAAAAACATCAACAGGCATTGGAAGTAGTAAATAATAATGAGGAAAAAGCCAAAAATGTTGGACAACA
 TGAGGAAACTGGAGAAAGAACTATTCAGAGAGATGGAATCAATCCTTCAAAACAAGCATCTTGATGTGGA
 GAAAATTGTTAATCTTTCTCAGTGTACAAAAGATGAAATTCAAATTTATCAGTCAAAATTTATCAGTC
 AAAGTTAGTTCT

ACGCGTACGCGGCCGCTCGAGCAGAAACTCATCTCAGAAGAGGATCTGGCAGCAAATGATATCCTGGATT
 ACAAGGATGACGACGATAAGGTTTAA

Protein Sequence:

>RC216491 protein sequence
 Red=Cloning site Green=Tags(s)

MEPFSCDTFVALPPATVDNRIIFGKNSDRLYDEVQEVVYFPAVVHDNLGERLKCTYIEIDQVPETYAVVL
 SRPAWLWGAEMGANEHGVCIGNEAVWGREEVCDEEALLGMDLVRLGLERADTAEKALNVIIDLLEKYQGQ
 GNCTEGRMVFSYHNSFLIADRNEAWILETAGKYWAAEKVQEGVRNISNQLSITTKIAREHPDMRNYAKRK
 GWWDGKKEFDFAAAYSYLDTAKMMTSSGRYCEGYKLLNKHKGNITFETMMEILRDKPSGINMEGEFLT
 TASMVSIPLQDSSLPCIHFFGTGPDPERSVFKPFI FVPHISQLLDTSSPTFELEDLVKKKSHFKPDRRHPLY
 QKHQQALEVYVNNNEEKAKIMLDNMRKLEKELFREMESILQNKHLDVEKIVNLPQCTKDEIQIYQSNLSV
 KVSS

TRTRPLEQKLISEEDLAANDILDYKDDDDKV

Chromatograms:

https://cdn.origene.com/chromatograms/mk6562_e07.zip

Restriction Sites:

Sgfl-Mlul

Cloning Scheme:


ACCN: NM_024583

ORF Size: 1272 bp

OTI Disclaimer: The molecular sequence of this clone aligns with the gene accession number as a point of reference only. However, individual transcript sequences of the same gene can differ through naturally occurring variations (e.g. polymorphisms), each with its own valid existence. This clone is substantially in agreement with the reference, but a complete review of all prevailing variants is recommended prior to use. [More info](#)

OTI Annotation: This clone was engineered to express the complete ORF with an expression tag. Expression varies depending on the nature of the gene.

Components: The ORF clone is ion-exchange column purified and shipped in a 2D barcoded Matrix tube containing 10ug of transfection-ready, dried plasmid DNA (reconstitute with 100 ul of water).

- Reconstitution Method:**
1. Centrifuge at 5,000xg for 5min.
 2. Carefully open the tube and add 100ul of sterile water to dissolve the DNA.
 3. Close the tube and incubate for 10 minutes at room temperature.
 4. Briefly vortex the tube and then do a quick spin (less than 5000xg) to concentrate the liquid at the bottom.
 5. Store the suspended plasmid at -20°C. The DNA is stable for at least one year from date of shipping when stored at -20°C.

RefSeq: [NM_024583.5](#)

RefSeq Size: 3071 bp

RefSeq ORF: 1275 bp

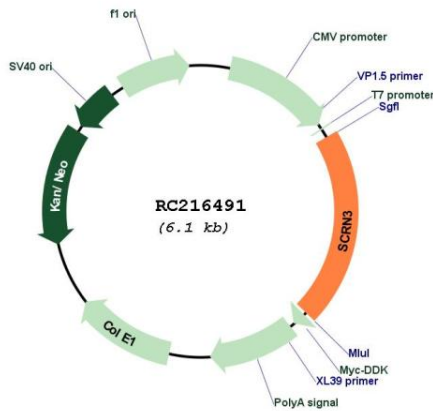
Locus ID: 79634

UniProt ID: [Q0VDG4](#)

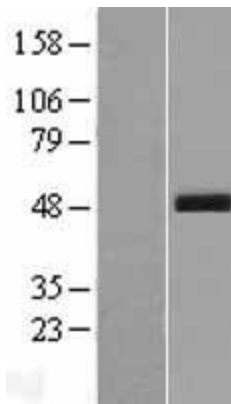
Cytogenetics: 2q31.1

MW: 48.5 kDa

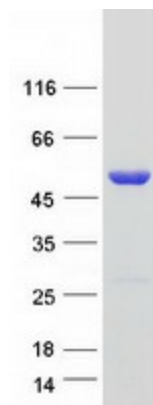
Product images:



Circular map for RC216491



Western blot validation of overexpression lysate (Cat# [LY411218]) using anti-DDK antibody (Cat# [TA50011-100]). Left: Cell lysates from untransfected HEK293T cells; Right: Cell lysates from HEK293T cells transfected with RC216491 using transfection reagent MegaTran 2.0 (Cat# [TT210002]).



Coomassie blue staining of purified SCR3 protein (Cat# [TP316491]). The protein was produced from HEK293T cells transfected with SCR3 cDNA clone (Cat# RC216491) using MegaTran 2.0 (Cat# [TT210002]).