

## Product datasheet for **RC216487**

### ZFP2 (NM\_030613) Human Tagged ORF Clone

#### Product data:

Product Type:	Expression Plasmids
Product Name:	ZFP2 (NM_030613) Human Tagged ORF Clone
Tag:	Myc-DDK
Symbol:	ZFP2
Synonyms:	zfp-2; ZNF751
Mammalian Cell Selection:	Neomycin
Vector:	pCMV6-Entry (PS100001)
E. coli Selection:	Kanamycin (25 ug/mL)



[View online »](#)

**ORF Nucleotide Sequence:**

>RC216487 ORF sequence  
 Red=Cloning site Blue=ORF Green=Tags(s)

TTTTGTAATACGACTCACTATAGGGCGGCCGGGAATTCGTCGACTGGATCCGGTACCGAGGAGATCTGCC  
 GCC**CGGATCGCC**

ATGGAAGGGAAGGTATCTGGCATTCTACTCTAGGGGAAACCTGGGAACCTAATAATTGGTTAGAGGGAC  
 AACAGGATAGTCATCTGAGCCAAGTGGGAGTTACCCATAAGGAAACCTTCACTGAGATGAGAGTATGTGG  
 AGGTAATGAATTTGAAAGATGTTCCAGTCAGGATTCAATCCTTGATACACAGCAAAGCATTCCCTATGGTA  
 AAAAGGCCCATAACTGTAATTCACATGGAGAAGATGCCACAAAAATTCTGAGTTAATAAAACTCAAA  
 GAATGTTTGTAGGAAAGAAGATCTATGAATGTAATCAGTGCAGCAAAACCTTCAGTCAGAGCTCATCCCT  
 TCTTAAGCACCAGAGGATTCATACTGGGAGAAAACCTATAAGTGAATGTATGTGGGAAACACTTCATT  
 GAACGATCCTCCCTTACTGTACATCAAAGAATTCATACTGGAGAGAAAACCTATAAATGTAATGAATGTG  
 GAAAAGCCTTTAGTCAGAGCATGAATCTTACTGTCCATCAACGAACCTCACACCGGAGAGAAAACCTATCA  
 GTGTAAGAGTGTGGCAAAGCCTCCATAAGAATTCATCTTTATTCAGCATGAAAGGATTCATACTGGA  
 GAGAAGCCCTACAAATGTAATGAATGTGGTAAAGCTTTTACCCAAAGCATGAATTTGACAGTTCATCAGA  
 GAACTCATACAGGAGAAAAACCTATGAATGTAATGAATGTGGAAAAGCCTTCAGTCAAAGCATGCATCT  
 TATTGTACATCAGAGAAGCCATACTGGAGAAAAACCTATGAGTGTAGTCAGTGTGGAAAAGCCTTTAGT  
 AAGAGCTCAACTTTACCTACATCAGCGAAATCACACTGGAGAAAAACCTTACAAATGTAACAAATGCG  
 GAAATCCTTTAGCCAAAGTACATATCTTATAGAACATCAGAGACTTCATTCTGGAGTAAAAACCTTTTGA  
 ATGTAACGAGTGTGGAAAAGCTTTCAGTAAGAATTCATCTCTAACTCAACATCGGAGAATTCACACTGGA  
 GAGAAAACCTTATGAGTGTATGGTGTGTGGAAAACATTTCACTGGACGATCATCCCTTACCGTGCATCAGG  
 TCATTCACACTGGAGAGAAAACCTTATGAGTGCAATGAATGTGGAAAAGCATTTCAGCCAGAGTGCTTACCT  
 TATTGAACATCAAAGAATTCATACTGGTGAAGAACCTATGAATGTGATCAGTGTGGAAAAGCCTTCATT  
 AAGAATTCATCCCTTACAGTGCATCAGAGAACCTATACAGGAGAGAAAACCTATCAGTGAATGAATGCG  
 GAAAAGCCTTCAGCCGGAGTACAAAACCTTACACGACATCAAAGAACTCATACG

**ACGCGT**ACGCGGCCGCTCGAGCAGAAACTCATCTCAGAAGAGGATCTGGCAGCAAATGATATCCTGGATT  
 ACAAGGATGACGACGATAAGGTTTAA

**Protein Sequence:**

>RC216487 protein sequence  
 Red=Cloning site Green=Tags(s)

MEREGIWSTLGETWEPNNWLEGGQDQSHLSQVGVTHKETFTFEMRVCGGNEFERCQSSQDSILDQSSIPMV  
 KRPHNCNSHGEDATQNSL IKTQRMFVGKKIYECNQCSKTFSSQSSLLKHQRIHTGEKPYKCNVCGKHFI  
 ERSSLTVHQRIHTGEKPYKCNCECGKAFS QSMNLT VHQRTHTGEKPYQCKEKGAFHKNSSLIQHERIHTG  
 EKPYKCNCECGKAF TQSMNLT VHQRTHTGEKPYECNECGKAF S QSMHLI VHQRSHTGEKPYECSQCGKAFS  
 KSSTLTLHQRNHTGEKPYKCNKCGKFSFSQSTYLIEHQRLHSGVKPFECNECGKAF SKNSSLTQHRR IHTG  
 EKPYECMVCCKHFTGRSSLTVHQVIHTGEKPYECNECGKAFS QSAYLIEHQRIHTGEKPYECDQCGKAFI  
 KNSSLTVHQRTHTGEKPYQCNCECGKAFSRSTNLTRHQRTHT

**TR**TRPLEQKLISEEDLAANDILDYKDDDDKV

**Chromatograms:**

[https://cdn.origene.com/chromatograms/mk6470\\_a03.zip](https://cdn.origene.com/chromatograms/mk6470_a03.zip)

**Restriction Sites:**

Sgfl-MluI

**Cloning Scheme:**


**ACCN:** NM\_030613

**ORF Size:** 1383 bp

**OTI Disclaimer:** The molecular sequence of this clone aligns with the gene accession number as a point of reference only. However, individual transcript sequences of the same gene can differ through naturally occurring variations (e.g. polymorphisms), each with its own valid existence. This clone is substantially in agreement with the reference, but a complete review of all prevailing variants is recommended prior to use. [More info](#)

**OTI Annotation:** This clone was engineered to express the complete ORF with an expression tag. Expression varies depending on the nature of the gene.

**Components:** The ORF clone is ion-exchange column purified and shipped in a 2D barcoded Matrix tube containing 10ug of transfection-ready, dried plasmid DNA (reconstitute with 100 ul of water).

- Reconstitution Method:**
1. Centrifuge at 5,000xg for 5min.
  2. Carefully open the tube and add 100ul of sterile water to dissolve the DNA.
  3. Close the tube and incubate for 10 minutes at room temperature.
  4. Briefly vortex the tube and then do a quick spin (less than 5000xg) to concentrate the liquid at the bottom.
  5. Store the suspended plasmid at -20°C. The DNA is stable for at least one year from date of shipping when stored at -20°C.

**RefSeq:** [NM\\_030613.4](#)

**RefSeq Size:** 2405 bp

**RefSeq ORF:** 1386 bp

**Locus ID:** 80108

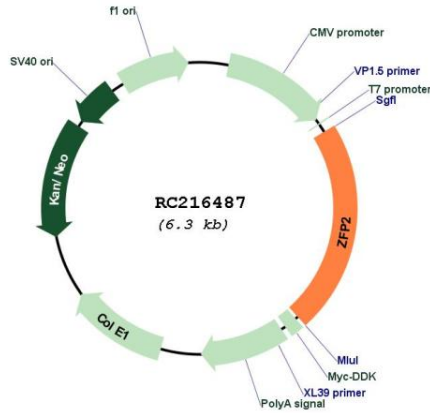
**UniProt ID:** [Q6ZN57](#)

**Cytogenetics:** 5q35.3

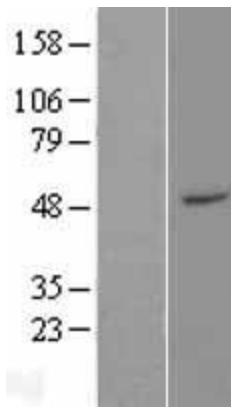
**MW:** 52.7 kDa

**Gene Summary:** Probable transcription factor involved in neuronal differentiation and/or phenotypic maintenance.[UniProtKB/Swiss-Prot Function]

**Product images:**



Circular map for RC216487



Western blot validation of overexpression lysate (Cat# [LY410793]) using anti-DDK antibody (Cat# [TA50011-100]). Left: Cell lysates from untransfected HEK293T cells; Right: Cell lysates from HEK293T cells transfected with RC216487 using transfection reagent MegaTran 2.0 (Cat# [TT210002]).