

Product datasheet for RC216481

NALP1 (NLRP1) (NM_033004) Human Tagged ORF Clone

Product data:

Product Type:	Expression Plasmids
Product Name:	NALP1 (NLRP1) (NM_033004) Human Tagged ORF Clone
Tag:	Myc-DDK
Symbol:	NALP1
Synonyms:	AIADK; CARD7; CILED; CLR17.1; DEFCAP; DEFCAP-L/S; JRRP; MSPC; NAC; NALP1; PP1044; SLEV1; VAMAS1
Mammalian Cell Selection:	Neomycin
Vector:	pCMV6-Entry (PS100001)
E. coli Selection:	Kanamycin (25 ug/mL)
ORF Nucleotide Sequence:	>RC216481 representing NM_033004 Red=Cloning site Blue=ORF Green=Tags(s)

TTTTGTAATACGACTCACTATAGGGCGGCCGGAATTCGTCGACTGGATCCGGTACCGAGGAGATCTGCC
GCC**CGATCGCC**

ATGGCTGGCGGAGCCTGGGGCCGCTGGCCTGTTACTTGGAGTTCCTGAAGAAGGAGGAGCTGAAGGAGT
TCCAGTCTCTGCTCGCCAATAAAGCGCACTCCAGGAGCTCTTCGGGTGAGACACCCGCTCAGCCAGAGAA
GACGAGTGGCATGGAGGTGGCCTCGTACCTGGTGGCTCAGTATGGGGAGCAGCGGCCTGGGACCTAGCC
CTCCATACCTGGGAGCAGATGGGGCTGAGGTCACTGTGCGCCCAAGCCAGGAAGGGGCAGGCCACTCTC
CCTCATTCCCCTACAGCCCAAGTGAACCCACCTGGGGTCTCCAGCCAACCCACCTCCACCGCAGTGCT
AATGCCCTGGATCCATGAATTGCCGGCGGGTGCACCCAGGGCTCAGAGAGAAGGGTTTTGAGACAGCTG
CCTGACACATCTGGACGCCGCTGGAGAGAAATCTCTGCCTCACTCTCTACCAAGCTCTTCCAAGCTCCC
CAGACCATGAGTCTCAAGCCAGGAGTCAACCAACGCCCCACATCCACAGCAGTCTGGGGAGCTGGGG
ATCCCCACCTCAGCCAGCCTAGCACCCAGAGAGCAGGAGGCTCCTGGGACCCAATGGCCTCTGGATGAA
ACGTCAGGAATTTACTACACAGAAATCAGAGAAAGAGAGAGAGAGAAATCAGAGAAAGGCAGGCCCCAT
GGGCAGCGGTGGTAGGAACGCCCCACAGGCGCACACCAGCCTACAGCCCAACCACCCATGGGAGCC
TTCTGTGAGAGAGAGCCTCTGTTCCACATGGCCCTGGAAAAATGAGGATTTTAACCAAAATTCACACAG
CTGCTACTTCTACAAAGACCTCACCCAGAAGCCAAGATCCCCTGGTCAAGAGAAGCTGGCCTGATTATG
TGGAGGAGAATCGAGGACATTTAATTGAGATCAGAGACTTATTTGGCCAGGCCTGGATACCAAGAACC
TCGCATAGTCATACTGCAGGGGGCTGCTGGAATTGGGAAGTCAACTGGCCAGGCAGGTGAAGGAAGCC
TGGGGGAGAGGCCAGCTGTATGGGGACCGCTTCCAGCATGTCTTCTACTTCAGCTGCAGAGAGCTGGCCC
AGTCCAAGGTGGTGAGTCTCGCTGAGCTCATCGAAAAAGATGGGACAGCCACTCCGGCTCCATTAGACA
GATCCTGTCTAGGCCAGAGCGGTGCTCTTTCATCCTCGATGGTGTAGATGAGCCAGGATGGGTCTTGACG
GAGCCGAGTTCTGAGCTCTGTCTGCACTGGAGCCAGCCACAGCCGGCGGATGCACTGCTGGGCAGTTTGC
TGGGAAAATACTTCCCAGGCATCCTTCTGATCACGGCTCGGACCACAGCTCTGCAGAACCTCAT



[View online »](#)

TCCTTCTTTGGAGCAGGCACGTTGGGTAGAGGTCTGGGGTTCTCTGAGTCCAGCAGGAAGGAATATTTCT
TACAGATATTTACAGATGAAAGGCAAGCAATTAGAGCCTTTAGGTTGGTCAAATCAAACAAAGAGCTCT
GGGCCCTGTGTCTGTGCCCTGGGTGTCCTGGCTGGCCTGCACCTGCCTGATGCAGCAGATGAAGCGGAA
GGAAAACTCACACTGACTTCCAAGACCACCACAACCCCTGTCTACATTACCTTGCCAGGCTCTCCAA
GCTCAGCCATTGGGACCCAGCTCAGAGACCTGTCTCTGGCTGTGAGGGCATCTGGCAAAAAAGA
CCCTTTTTCAGTCCAGATGACCTCAGGAAGCATGGGTAGATGGGGCCATCATCTCCACCTTCTTGAAGAT
GGTATTCTTCAAGAGCACCCCATCCCTGAGCTACAGCTTATTACCTCTGTTTCCAAGAGTCTTTT
GCAGCAATGTCTATGTCTTGGAGGATGAGAAGGGGAGAGGTAAACATTCTAATTGCATCATAGATTTGG
AAAAGACGCTAGAAGCATATGGAATACATGGCCTGTTTGGGGCATCAACCACACGTTTCTATTGGGCT
GTTAAGTGATGAGGGGGAGAGAGATGGAGAACATCTTCACTGCCGGTGTCTCAGGGGAGGAACCTG
ATGCAGTGGTCCCGTCCCTGCAGCTGTGCTGCAGCCACACTCTCTGGAGTCCCTCCACTGCTGTACG
AGACTCGAACAACAAAGTCTGACACAAGTGATGGCCATTTGGAAGAAATGGGCATGTGTGTAGAAAC
AGACATGGAGCTTATGTGCACTTTCTGCATTAATTCAGCCGCCACGTGAAGAAGCTTCAGCTGATT
GAGGGCAGGCAGCACAGATCAACATGGAGCCCAACATGGTAGTCTGTTTCAAGTGGTCCCAGTACAG
ATGCCTATTGGCAGATTCTTTCTCCGTCTCAAGGTACCAGAAACCTGAAGGAGCTGGACCTAAGTGG
AAACTCGCTGAGCCACTCTGCAGTGAAGAGTCTTTGTAAGACCCTGAGACGCCCTCGCTGCCTCCTGGAG
ACCCTGCGGTTGGCTGGCTGTGGCCTCACAGCTGAGGACTGCAAGGACCTTGCCCTTTGGGCTGAGAGCCA
ACCAGACCCTGACCGAGCTGGACCTGAGCTTCAATGTGCTCACGGATGCTGGAGCCAAACACCTTTGCCA
GAGACTGAGACAGCCGAGCTGCAAGCTACAGCGACTGCAGCTGGTGCAGCTGTGGCCTCACGTCTGACTGC
TGCCAGGACCTGGCCTCTGTGCTTAGTGCCAGCCCCAGCTGAAGGAGCTAGACCTGCAGCAGAACAACC
TGGATGACGTTGGCGTGCAGTCTGTGAGGGGCTCAGGCATCCTGCCTGCAACTCATAACGCTGGG
GCTGGACCAGACAACCTGAGTGATGAGATGAGGCAGAACTGAGGGCCCTGGAGCAGGAAACCTCAG
CTGCTCATCTTTCAGCAGACGGAACCAAGTGATGATGACCCCTACTGAGGGCCTGGATACGGGAGATGA
GTAAATAGCACATCCTCACTCAAGCGGCAGAGACTCGGATCAGAGAGGGCGGCTTCCCATGTTGCTCAGGC
TAATCTCAAACCTCTGGACGTGAGCAAGATCTTCCCAATTGCTGAGATTGCAGAGGAAAGCTCCCCAGAG
GTAGTACCGGTGGAACCTTGTGCGTGCCTTCTCCTGCCTCTCAAGGGGACCTGCATACGAAGCCTTTGG
GGACTGACGATGACTTCTGGGGCCCCACGGGGCTGTGGCTACTGAGGTAGTTGACAAAGAAAAGAACTT
GTACCGAGTTCACCTCCCTGTAGCTGGCTCCTACCCTGGCCCAACACGGGTCTCTGCTTTGTGATGAGA
GAAGCGGTGACCGTTGAGATTGAATCTGTGTGTGGGACCAGTTCCTGGGTGAGATCAACCCACAGCACA
GCTGGATGGTGGCAGGGCTCTGCTGGACATCAAGGCTGAGCCTGGAGCTGTGAAAGCTGTGCACCTCCC
TCACTTTGTGGCTCTCAAGGGGGCCATGTGGACACATCCCTGTTCCAAATGGCCCACTTTAAAGAGGAG
GGGATGCTCCTGGAGAAGCCAGCCAGGGTGGAGCTGCATCACATAGTTCTGGAAAACCCAGCTTCTCCC
CCTTGGGAGTCCCTGAAAATGATCCATAATGCCCTGCGCTTCAATCCCGTACCTCTGTGGTGTGTCT
TTACCACCGCTCCATCCTGAGGAAGTACCTTCCACCTACCTGATCCCAAGTACTGCTCCATTTCGG
AAGGCCATAGATGATCTAGAAAAGAAATTCAGTTTGTGCGAATCCACAAGCCACCCCGCTGACCCAC
TTTATATGGGCTGTGTTACACTGTGTCTGGTCTGGTTCAGGGATGCTGGAATACTCCCAAGGAACT
GGAGCTCTGCTATCGAAGCCCTGGAGAAGACCAGCTGTTCTCGGAGTTCACGTTGGCCACTTGGGATCA
GGGATCAGGCTGCAAGTAAAAGACAAGAAAGATGAGACTCTGGTGTGGGAGCCCTGGTGAACCCAGGAG
ATCTCATGCCTGCAACTACTCTGATCCCTCCAGCCCGCATAGCCGTACCTTACCTCTGGATGCCCGCA
GTTGCTGCACTTTGTGGACCAGTATCGAGAGCAGCTGATAGCCCGAGTGACATCGGTGGAGTTGTCTTG
GACAAACTGCATGGACAGGTGCTGAGCCAGGAGAGTACGAGAGGGTGTGGCTGAGAACCAGAGGCCCA
GCCAGATGCGGAAGCTGTTGAGCTTGGCCAGTCTGGGACCGGAAGTGCAAAGATGACTCTACCAAGC
CCTGAAGGAGACCCATCCTCACCTCATTATGGAACCTCTGGGAGAAGGGCAGCAAAAAGGGACTCTGCCA
CTCAGCAGC

ACGCGTACGCGGCGGCTCGAGCAGAAACTCATCTCAGAAGAGGATCTGGCAGCAATGATATCCTGGATT
ACAAGGATGACGACGATAAGGTTTAA

Protein Sequence: >RC216481 representing NM_033004
 Red=Cloning site Green=Tags(s)

```
MAGGAWGRLACYLEFLKKEELKEFQLLLANKAHSRSSSGETPAQPEKTSGMEVASYLVAQYGEQRAWDLA
LHTWEQMGLRSLCAQAQEGAGHSPSPYPSEPHLGSPSQPTSTAVLMPWIHELPAQTQGSERRVLRQL
PDTSGRRWREISASLLYQALPSSPDHESPSQESPNAPTSTAVLGSWGSPPQPSLAPREQEAPGTQWPLDE
TSGIYYTEIREREREKSEKGRPPWAQVVGTPPQAHTSLQPHHHHPWEPVRESLCTWPKNEDFNQKFTQ
LLLLQRPHRSQDPLVKRSWPDYVEENRGHLIEIRDLFPGPLDTQEPRIVILQGAAGIGKSTLARQVKEA
WGRGQLYGDRFQHVYFSCRELAQSKVVSALAEIIGKDGATPAPIRQILSRPERLLFILDGVDEPGWVLQ
EPSSSELCHWSQPQPADALLGSLGKTIPEASFITARTTALQNLIPSLEQARWVEVLGFSSESRKEYF
YRYFTDERQAIRAFRLVKSNEKELWALCLVPVSWLACTCLMQMKRKEKLTLSKTTTTLCLHYLAQALQ
AQPLGPQLRDLCSLAAEWQKTLFSPDDLKHKGLDGAIISTFLKMGILQEHPIPLSYFIIHLCFQEFF
AAMSYVLEDEKGRGKHSNCIIDLEKTLEAYGIHGLFGASTTRFLLGLLSDEGEREMENIFHCRLSQGRNL
MQWVPSLQLLQPHSLESLHCLYETRNKTFLTQVMAHFEEMGMCVETDMELLVCTFCIKFSRHVKKLQLI
EGRQHRSTWSPTMVVLFWRVPVTDAYWQILFVSLKVTRNLKELDLSGNSLSHSAVKSLCKTLRRPRCLLE
TLRLAGCGLTAEDCKDLAFGLRANQTLTELDLSFNVLTDAGAKHLQRLRQPSCKLQRLQLVSCGLTSDC
CQDLASVLSASPSLKELDLQQNNLDDVGVRLCEGLRHPACKLIRLGLDQTTLSDEMRELRALEQEKPO
LLIFSRRKPSVMTPEGLDTGEMSNSTSSLRQRQLGSERAASHVAQANLKLDDVSKIFPIAIEAEESSPE
VVPVELLCVPSASQDGLHTKPLGTDGDFWGPVATEVVDKEKNLYRVHFPVAGSYRWPNPTGLCFVMR
EAVTVEIEFCVWDQFLGELNPHQSHWMVAGPLLDIKAEPGAVEAVHLPHFVALQGGHVDTSLQMAHFKEE
GMLLEKPARVELHHIVLENPSFSPLGVLLKMIHNALRFIPVTSVLLYHRVHPEEVTFFHLYLIPSDCSIR
KAIDDLKMKFQFVRIHKPPPLTPLYMGCRTVSGSGSMLEILPKELCYRSPGEDQLFSEFYVGHLSG
GIRLQVKDKKDETLVWEALVKPGDLPATLIPPARIAVPSPLDAPQLLHFVDQYREQLIARVTSVEVVL
DKLHGQVLSQEQYERVLAENTRPSQMRKLFSLSQSWDRKCKDGLYQALKETHPHLIMELWEKGSKKGLLP
LSS
```

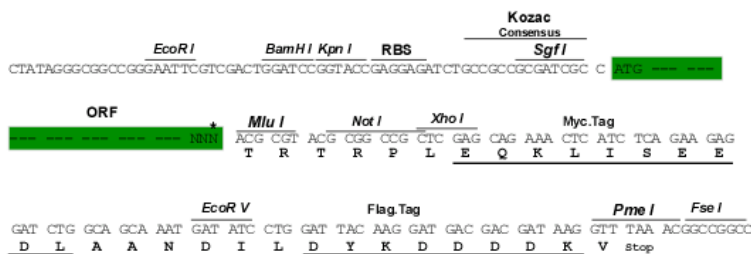
TRTRPLEQKLISEEDLAANDILDYKDDDDKV

Chromatograms: https://cdn.origene.com/chromatograms/mk6224_d01.zip

Restriction Sites: Sgfl-MluI

Cloning Scheme:

Cloning sites used for ORF Shutting:

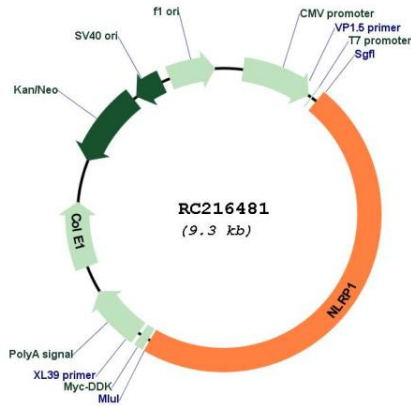


* The last codon before the Stop codon of the ORF

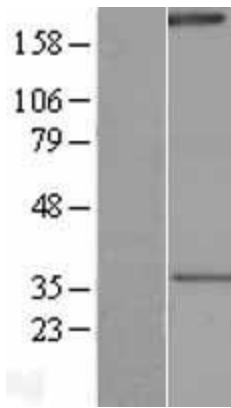
ACCN: NM_033004

ORF Size:	4419 bp
OTI Disclaimer:	The molecular sequence of this clone aligns with the gene accession number as a point of reference only. However, individual transcript sequences of the same gene can differ through naturally occurring variations (e.g. polymorphisms), each with its own valid existence. This clone is substantially in agreement with the reference, but a complete review of all prevailing variants is recommended prior to use. More info
OTI Annotation:	This clone was engineered to express the complete ORF with an expression tag. Expression varies depending on the nature of the gene.
Components:	The ORF clone is ion-exchange column purified and shipped in a 2D barcoded Matrix tube containing 10ug of transfection-ready, dried plasmid DNA (reconstitute with 100 ul of water).
Reconstitution Method:	<ol style="list-style-type: none">1. Centrifuge at 5,000xg for 5min.2. Carefully open the tube and add 100ul of sterile water to dissolve the DNA.3. Close the tube and incubate for 10 minutes at room temperature.4. Briefly vortex the tube and then do a quick spin (less than 5000xg) to concentrate the liquid at the bottom.5. Store the suspended plasmid at -20°C. The DNA is stable for at least one year from date of shipping when stored at -20°C.
RefSeq:	NM_033004.4
RefSeq Size:	5617 bp
RefSeq ORF:	4422 bp
Locus ID:	22861
UniProt ID:	Q9C000
Cytogenetics:	17p13.2
Protein Families:	Druggable Genome
Protein Pathways:	NOD-like receptor signaling pathway
MW:	165.7 kDa
Gene Summary:	This gene encodes a member of the Ced-4 family of apoptosis proteins. Ced-family members contain a caspase recruitment domain (CARD) and are known to be key mediators of programmed cell death. The encoded protein contains a distinct N-terminal pyrin-like motif, which is possibly involved in protein-protein interactions. This protein interacts strongly with caspase 2 and weakly with caspase 9. Overexpression of this gene was demonstrated to induce apoptosis in cells. Multiple alternatively spliced transcript variants encoding distinct isoforms have been found for this gene, but the biological validity of some variants has not been determined. [provided by RefSeq, Jul 2008]

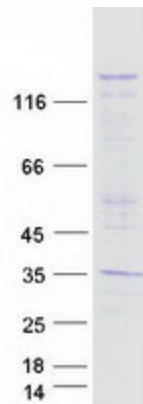
Product images:



Circular map for RC216481



Western blot validation of overexpression lysate (Cat# [LY409802]) using anti-DDK antibody (Cat# [TA50011-100]). Left: Cell lysates from untransfected HEK293T cells; Right: Cell lysates from HEK293T cells transfected with RC216481 using transfection reagent MegaTran 2.0 (Cat# [TT210002]).



Coomassie blue staining of purified NLRP1 protein (Cat# [TP316481]). The protein was produced from HEK293T cells transfected with NLRP1 cDNA clone (Cat# RC216481) using MegaTran 2.0 (Cat# [TT210002]).