

## Product datasheet for RC216480

### RNF165 (NM\_152470) Human Tagged ORF Clone

#### Product data:

**Product Type:** Expression Plasmids  
**Product Name:** RNF165 (NM\_152470) Human Tagged ORF Clone  
**Tag:** Myc-DDK  
**Symbol:** RNF165  
**Synonyms:** Ark2C; ARKL2; RNF111L2  
**Mammalian Cell Selection:** Neomycin  
**Vector:** pCMV6-Entry (PS100001)  
**E. coli Selection:** Kanamycin (25 ug/mL)  
**ORF Nucleotide Sequence:** >RC216480 representing NM\_152470  
 Red=Cloning site Blue=ORF Green=Tags(s)

TTTTGTAATACGACTCACTATAGGGCGGCCGGAATTCGTCGACTGGATCCGGTACCGAGGAGATCTGCC  
 GCC**CGATCGC**C

ATGGTCTGGTCCACGTCGGCTATCTCGTGCTCCAGTGTGGCTCTGTGCGAAACAGAGGTGCCCCCT  
 TTCAAAGGTCTCAGCATCTCAGCTACCTCTGCCGCCACTTCCACCTGGGCCCGCAGCCGAGCA  
 GCTCGCTCCCGACTTCCCGCTGGCCACCCGTCAGTCGCAGCCAGGCCTCAGCGCCACATGGCCCG  
 GCCCACCAGCACAGCGGCCGCCGCACCCAGTCGCTGACCCGCTGCCACCCTGCAGTTCAGGACGTC  
 CAGGTCCCTCCTCCTACCTCAGGCCCTGCACCAGCAATACCTCTGCAGCAGCAGCTCCTGGAAGCCCA  
 GCACCGCAGGCTGGTCTCGCACCCAGGCGGAGTCAGGAGCGTGTATCTGTCCACCCCGCCCTCCAT  
 CCCAGTTCGACTTCGGCCAACCTGCAGACACCTCAGCCAGGTATTTGGCTGAGGGCACTGACTGGGATC  
 TCAGTGTGGATGCTGGCTTGAGTCTGCTCAGTTCAGGTGCGGCCCATCCCTCAGCACTATCAGCATT  
 CCTAGCCACTCCTCGAATGCACCACTTTCCAGAACTCCTCCTCCACACAGATGGTCTGATGAAATC  
 CGAAACTACCTTACCCTCAGCTTCACTTCTTGTCTCCAGGGACTAAATCCCAGCAGACACACCTCCG  
 CCGTACGGGAGAGCTATGAGGAGCTGTCAGCTCGAGGACAGGTTGGTAATGTGACTCGGGGAGCTGT  
 ACAGAACCATTGAGAGGTTCACTTCCCCACAAGTATAAGAAGCGAAGACCCAGGATGGCAAGGGC  
 AAGAAGGATGAGGGGAGGAGTCAGACACAGATGAGAAATGCACAATTTGTCTGTCTATGCTGGAAGATG  
 GAGAAGATGTGAGACGCTACCCTGTATGCATCTTTTACCAACTGTGGTGGACCACTGGCTCGCCAT  
 GAGCAAGAAATGCCCATCTGCCGAGTGGACATTGAGACACAACCTGGGAGCCGACAGC

**ACGCGT**ACGCGGCCGCTCGAGCAGAACTCATCTCAGAAGAGGATCTGGCAGCAATGATATCCTGGATT  
 ACAAGGATGACGACGATAAGGTTTAA



[View online »](#)

**Protein Sequence:** >RC216480 representing NM\_152470  
Red=Cloning site Green=Tags(s)

MVLVHVGYL VLPVFGSVNRNGAPFQRSQHPHATSCRHFHLGPPQPQQLAPDFPLAHPVQSQPGLSAHMAP  
 AHQHSGALHQSL TPLPTLQFQDVTGPFSLPQALHQYLLQQLLAQHRRRLVSHPRRSQERVSVHPHRLH  
 PSFDFGQLQTPQPRYLAEGTDWDL SVDAGLSPAQFQVRP IPQHYQHYLATPRMHFFPRNSSTQMVVHEI  
 RNYPYPQLHFLALQGLNPSRHTSAVRESYEELLQLEDRLGNVTRGAVQNTIERFTFPHKYKRRPQDGKG  
 KKDEGEESDTDEKCTICLSMLEGEDVRRLLPCMHLFHQLCVDQWLAMSKKCPICRVDIETQLGADS

TRTRPLEQKLISEEDLAANDILDYKDDDDKV

**Chromatograms:** [https://cdn.origene.com/chromatograms/mk8016\\_g12.zip](https://cdn.origene.com/chromatograms/mk8016_g12.zip)

**Restriction Sites:** SgfI-MluI

**Cloning Scheme:**



**ACCN:** NM\_152470

**ORF Size:** 1038 bp

**OTI Disclaimer:** The molecular sequence of this clone aligns with the gene accession number as a point of reference only. However, individual transcript sequences of the same gene can differ through naturally occurring variations (e.g. polymorphisms), each with its own valid existence. This clone is substantially in agreement with the reference, but a complete review of all prevailing variants is recommended prior to use. [More info](#)

**OTI Annotation:** This clone was engineered to express the complete ORF with an expression tag. Expression varies depending on the nature of the gene.

**Components:** The ORF clone is ion-exchange column purified and shipped in a 2D barcoded Matrix tube containing 10ug of transfection-ready, dried plasmid DNA (reconstitute with 100 ul of water).

**Reconstitution Method:**

1. Centrifuge at 5,000xg for 5min.
2. Carefully open the tube and add 100ul of sterile water to dissolve the DNA.
3. Close the tube and incubate for 10 minutes at room temperature.
4. Briefly vortex the tube and then do a quick spin (less than 5000xg) to concentrate the liquid at the bottom.
5. Store the suspended plasmid at -20°C. The DNA is stable for at least one year from date of shipping when stored at -20°C.

**RefSeq:** [NM\\_152470.3](#)

**RefSeq Size:** 5276 bp

**RefSeq ORF:** 1041 bp

**Locus ID:** 494470

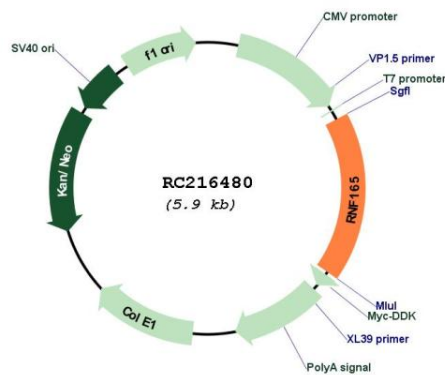
**UniProt ID:** [Q6ZSG1](#)

**Cytogenetics:** 18q21.1

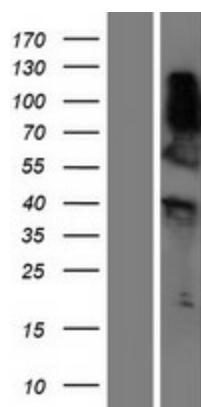
**MW:** 39.3 kDa

**Gene Summary:** Encoded in regions involved in pericentric inversions in patients with bipolar affective disorder. [provided by RefSeq, Jul 2008]

### Product images:



Circular map for RC216480



Western blot validation of overexpression lysate (Cat# [LY407527]) using anti-DDK antibody (Cat# [TA50011-100]). Left: Cell lysates from untransfected HEK293T cells; Right: Cell lysates from HEK293T cells transfected with RC216480 using transfection reagent MegaTran 2.0 (Cat# [TT210002]).