

## Product datasheet for **RC216475**

### Ribosomal Protein S29 (RPS29) (NM\_001030001) Human Tagged ORF Clone

#### Product data:

**Product Type:** Expression Plasmids  
**Product Name:** Ribosomal Protein S29 (RPS29) (NM\_001030001) Human Tagged ORF Clone  
**Tag:** Myc-DDK  
**Symbol:** Ribosomal Protein S29  
**Synonyms:** DBA13; S29; uS14  
**Mammalian Cell Selection:** Neomycin  
**Vector:** pCMV6-Entry (PS100001)  
**E. coli Selection:** Kanamycin (25 ug/mL)  
**ORF Nucleotide Sequence:** >RC216475 ORF sequence  
Red=Cloning site Blue=ORF Green=Tags(s)

TTTTGTAATACGACTCACTATAGGGCGGCCGGAATTCGTCGACTGGATCCGGTACCGAGGAGATCTGCC  
GCC**CGATCGCC**

ATGGGTCACCAGCAGCTGTACTGGAGCCACCCGCGAAAATTCGGCCAGGGTTCTCGCTCTTGTCTGTCT  
GTTCAAACCGGCACGGTCTGATCCGAAATATGGCCTCAATATGTGCCGCCAGTGTTCGTCAGTACGC  
GAAGGATATCGGTTTCATTAAGAAAGACCTGAGCTGTCTCCTTGGCACTGCCTATGGAG

**ACGCGT**ACGCGGCCGCTCGAGCAGAACTCATCTCAGAAGAGGATCTGGCAGCAAATGATATCCTGGATT  
ACAAGGATGACGACGATAAGGTTTAA

**Protein Sequence:** >RC216475 protein sequence  
Red=Cloning site Green=Tags(s)  
MGHQQLYWSHPRKFGQGSRSCRVCNHRGLIRKYGLNMCRQCFRQYAKDIGFIKKDLSCLPWHCLWR  
**TRTRPLEQKLI**SEEDLAANDILDYKDDDDKV

**Chromatograms:** [https://cdn.origene.com/chromatograms/mk6454\\_f12.zip](https://cdn.origene.com/chromatograms/mk6454_f12.zip)

**Restriction Sites:** Sgfl-MluI



[View online »](#)

**Cloning Scheme:**


**ACCN:** NM\_001030001

**ORF Size:** 201 bp

**OTI Disclaimer:** The molecular sequence of this clone aligns with the gene accession number as a point of reference only. However, individual transcript sequences of the same gene can differ through naturally occurring variations (e.g. polymorphisms), each with its own valid existence. This clone is substantially in agreement with the reference, but a complete review of all prevailing variants is recommended prior to use. [More info](#)

**OTI Annotation:** This clone was engineered to express the complete ORF with an expression tag. Expression varies depending on the nature of the gene.

**Components:** The ORF clone is ion-exchange column purified and shipped in a 2D barcoded Matrix tube containing 10ug of transfection-ready, dried plasmid DNA (reconstitute with 100 ul of water).

**Reconstitution Method:**

1. Centrifuge at 5,000xg for 5min.
2. Carefully open the tube and add 100ul of sterile water to dissolve the DNA.
3. Close the tube and incubate for 10 minutes at room temperature.
4. Briefly vortex the tube and then do a quick spin (less than 5000xg) to concentrate the liquid at the bottom.
5. Store the suspended plasmid at -20°C. The DNA is stable for at least one year from date of shipping when stored at -20°C.

**RefSeq:** [NM\\_001030001.4](#)

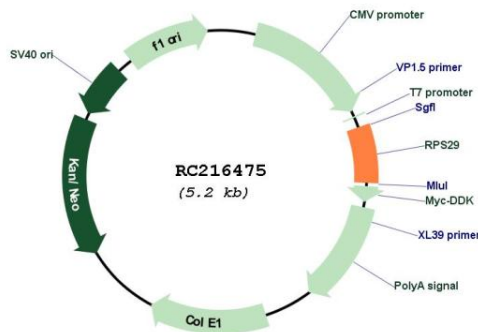
**RefSeq Size:** 1414 bp

**RefSeq ORF:** 204 bp

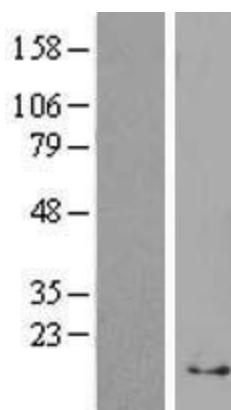
**Locus ID:** 6235  
**UniProt ID:** [P62273](#)  
**Cytogenetics:** 14q21.3  
**Protein Pathways:** Ribosome  
**MW:** 8.1 kDa

**Gene Summary:** Ribosomes, the organelles that catalyze protein synthesis, consist of a small 40S subunit and a large 60S subunit. Together these subunits are composed of 4 RNA species and approximately 80 structurally distinct proteins. This gene encodes a ribosomal protein that is a component of the 40S subunit and a member of the S14P family of ribosomal proteins. The protein, which contains a C2-C2 zinc finger-like domain that can bind to zinc, can enhance the tumor suppressor activity of Ras-related protein 1A (KREV1). It is located in the cytoplasm. Variable expression of this gene in colorectal cancers compared to adjacent normal tissues has been observed, although no correlation between the level of expression and the severity of the disease has been found. As is typical for genes encoding ribosomal proteins, there are multiple processed pseudogenes of this gene dispersed through the genome. Alternatively spliced transcript variants encoding different isoforms have been found for this gene. [provided by RefSeq, Mar 2013]

### Product images:



Circular map for RC216475



Western blot validation of overexpression lysate (Cat# [LY422281]) using anti-DDK antibody (Cat# [TA50011-100]). Left: Cell lysates from untransfected HEK293T cells; Right: Cell lysates from HEK293T cells transfected with RC216475 using transfection reagent MegaTran 2.0 (Cat# [TT210002]).