

Product datasheet for RC216474

SLC25A2 (NM_031947) Human Tagged ORF Clone

Product data:

Product Type:	Expression Plasmids
Product Name:	SLC25A2 (NM_031947) Human Tagged ORF Clone
Tag:	Myc-DDK
Symbol:	SLC25A2
Synonyms:	ORC2; ORNT2
Mammalian Cell Selection:	Neomycin
Vector:	pCMV6-Entry (PS100001)
E. coli Selection:	Kanamycin (25 ug/mL)
ORF Nucleotide Sequence:	>RC216474 ORF sequence Red=Cloning site Blue=ORF Green=Tags(s)

TTTTGTAATACGACTCACTATAGGGCGGCCGGAATTCGTCGACTGGATCCGGTACCGAGGAGATCTGCCGCCCGCATCGCC

ATGAAGTCCGGTCTGGCATCCAAGCCGCCATCGACCTCACAGCGGGGGCCGAGGGGGACAGCGTGTG
TACTGACTGGGCAGCCCTTCGACACAATAAAAGTGAAGATGCAGACGTTCCCTGACCTGTACAAGGGCCT
CACCGACTGCTTCTGAAGACATACGCTCAAGTGGGTCTCCGGGGCTTCTACAAGGCACCGCCCGCA
CTTATGGCCTACGTCGCCAAAACCTCGTCCTTTCATGTGCTACGGGTCTGCCAGCAGTTTGTGAGGA
AAGTGGCTGGAATGGACAAGCAGGCAAAGCTGAGTGATCTCCAGACTGCAGCCGGGGTCTTCGCCTC
TGCAATTTGCTGCACTGGCTCTCTGCCCACTGAGCTTGTGAAGTGCCGGCTACAGACCATGTATGAAATG
GAGATGTCAGGGAAGATAGCAAAAAGCCATAATACAATTTGGTCTGTCGTGAAGGTATCCTTAAAAAGG
ATGGCCCTTGGGCTTCTACCATGGACTCTCGAGTACTCTACTTCAAGAAGTACCGGGTTATTTCTTTT
CTTTGGTGGCTATGAACTGAGCCGATCGTTTTTTGCGTCAGGGAGATCAAAAGTGAAGTACCGCCCTGTC
CATTTGATGTTAAGTGGTGGAGTTGCTGGAATTTGCTGTGGCTTGTGCGTGTCCAGTGGATTGTATTA
AATCCAGAATCAAGTCTTTCCATGTATGGGAAACAGGCAGGATTTATTGGTACCCTCTAAGTGTGTG
GAGAAAATGAAGGAATAGTAGCCTTATATCTGGACTGAAAGCTACTATGATTCGAGCAATCCCTGCCAAT
GGGGCACTGTTTGTGGCTACGAATACAGCAGGAAGATGATGATGAAACAGTTGGAAGCATA

ACGCGTACGCGGGCCGCTCGAGCAGAAAACCTCATCTCAGAAGAGGATCTGGCAGCAAATGATATCCTGGATT
ACAAGGATGACGACGATAAGGTTTAA



[View online »](#)

Protein Sequence: >RC216474 protein sequence
Red=Cloning site Green=Tags(s)

MKSGPGIQAAIDLTAGAAGGTACVLTGQPFDTIKVKMQTFPDLYKGLTDCFLKTYAQVGLRGFYKGTGPA
 LMAYVAENSVLFMCYGFCCQFVRKVVAGMDKQAKLSDLQTAAGSFASFAALALCPTELVKCRLQTMTEM
 EMSGKIAKSHNTIWSVVKGILKKDGPLGFYHGLSSTLLQEVPGYFFFFGGYELSRFFASGRSKDELGPV
 HLMLSGGVAGICLWLVVFPVDCIKSRIQVLSMYGKQAGFIGTLLSVVRNEGIVALYSGLKATMIRAIPAN
 GALFVAYEYSRKMMLKQLEAY

TRTRPLEQKLISEEDLAANDILDYKDDDDKV

Chromatograms: https://cdn.origene.com/chromatograms/mk6450_f10.zip

Restriction Sites: SgfI-MluI

Cloning Scheme:



ACCN: NM_031947

ORF Size: 903 bp

OTI Disclaimer: The molecular sequence of this clone aligns with the gene accession number as a point of reference only. However, individual transcript sequences of the same gene can differ through naturally occurring variations (e.g. polymorphisms), each with its own valid existence. This clone is substantially in agreement with the reference, but a complete review of all prevailing variants is recommended prior to use. [More info](#)

OTI Annotation: This clone was engineered to express the complete ORF with an expression tag. Expression varies depending on the nature of the gene.

Components: The ORF clone is ion-exchange column purified and shipped in a 2D barcoded Matrix tube containing 10ug of transfection-ready, dried plasmid DNA (reconstitute with 100 ul of water).

Reconstitution Method:

1. Centrifuge at 5,000xg for 5min.
2. Carefully open the tube and add 100ul of sterile water to dissolve the DNA.
3. Close the tube and incubate for 10 minutes at room temperature.
4. Briefly vortex the tube and then do a quick spin (less than 5000xg) to concentrate the liquid at the bottom.
5. Store the suspended plasmid at -20°C. The DNA is stable for at least one year from date of shipping when stored at -20°C.

RefSeq: [NM_031947.4](#)

RefSeq Size: 1417 bp

RefSeq ORF: 906 bp

Locus ID: 83884

UniProt ID: [Q9BXI2](#)

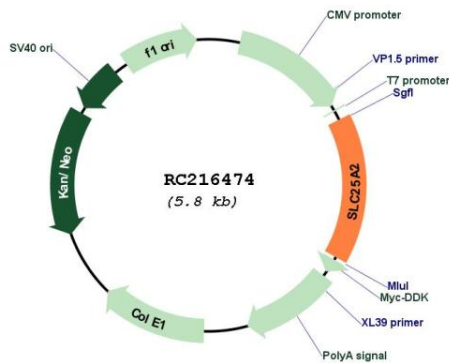
Cytogenetics: 5q31.3

Protein Families: Druggable Genome, Transmembrane

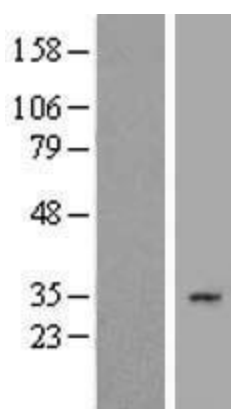
MW: 32.6 kDa

Gene Summary: This intronless gene encodes a protein that localizes to the mitochondrial inner membrane and likely functions as a transporter of small molecules such as ornithine. This gene is located between the protocadherin beta and gamma gene clusters on chromosome 5. [provided by RefSeq, Dec 2014]

Product images:



Circular map for RC216474



Western blot validation of overexpression lysate (Cat# [LY410430]) using anti-DDK antibody (Cat# [TA50011-100]). Left: Cell lysates from untransfected HEK293T cells; Right: Cell lysates from HEK293T cells transfected with RC216474 using transfection reagent MegaTran 2.0 (Cat# [TT210002]).