

## Product datasheet for RC216473

### MAEA (NM\_005882) Human Tagged ORF Clone

#### Product data:

Product Type:	Expression Plasmids
Product Name:	MAEA (NM_005882) Human Tagged ORF Clone
Tag:	Myc-DDK
Symbol:	MAEA
Synonyms:	EMLP; EMP; GID9; HLC-10; P44EMLP; PIG5
Mammalian Cell Selection:	Neomycin
Vector:	pCMV6-Entry (PS100001)
E. coli Selection:	Kanamycin (25 ug/mL)
ORF Nucleotide Sequence:	>RC216473 representing NM_005882 Red=Cloning site Blue=ORF Green=Tags(s)

TTTTGTAATACGACTCACTATAGGGCGGCCGGAATTCGTCGACTGGATCCGGTACCGAGGAGATCTGCC  
GCC**CGATCGCC**

ATGGCGGTGCAGGAGTCGGCGGCTCAGTTGTCCATGACCCTGAAGGTCCAGGAGTACCCGACCCTCAAGG  
TGCCCTACGAGACGCTGAACAAACGCTTCGCGCCGCTCAGAAGAACATTGACCGGGAGACCAGCCACGT  
CACCATGGTGGTGGCCGAGCTGGAGAAGACGTTGAGCGGCTGCCCGCCGTTGGACTCCGTGGTCAGCCTG  
CTGGACGGCGTGGTGGAGAAGCTCAGCGTCCTCAAGAGGAAGGCGGTGGAATCCATCCAGGCCGAGGACG  
AGAGCGCCAAGCTGTGCAAGCGCCGGATCGAGCACCTCAAAGAGCATAGCAGCGACCAGCCCGCGCGGC  
CAGCGTGTGGAAGAGGAAGCGCATGGATCGCATGATGGTGGAGCACCTGCTGCGTTGCGGCTACTACAAC  
ACGGCTGTCAAGCTGGCGGCCAGAGCGGCATCGAGAGCTGCCTGGAGTTGAGCCTCAGAATCCAGGAGT  
TCATTGAACTCATCCGGCAGAATAAGAGACTGGACGCTGTGAGACATGCAAGAAAGCACTTCAGCCAAGC  
AGAAGGGAGCCAGCTGGACGAGGTGCGCCAGGCCATGGGCATGCTGGCCTTCCCGCCGACACGCACATC  
TCCCCGTACAAGGACCTTCTGGACCCTGCACGGTGGCGGATGCTGATCCAGCAGTTCCGGTACGACAAC  
ACCGACTACCCAGCTGGGAAACAATTCTGTGTTACCCTCACCTGCAGGCTGGCCTCTCAGCCATCAA  
GACACCACAGTGTACAAGGAGGACGGCAGCTCCAAGAGCCCTGACTGCCCTGTGTGCAGCCGCTCCCTG  
AACAAGCTGGCGCAGCCCTGCCATGGCCACTGTGCCAACTCCCGCCTGGTGTGCAAGATTTCTGGCG  
ACGTGATGAACGAGAACAATCCGCCATGATGCTGCCAACGGCTACGTCTACGGCTACAATTCTCTGCT  
TTCTATCCGTCAAGATGATAAAGTCGTGTGCCGAGAACCAAAGAAGTCTTCCACTTCTCACAAGCCGAG  
AAGGTGTACATCATG

**ACGCGT**ACGCGGCCGCTCGAGCAGAACTCATCTCAGAAGAGGATCTGGCAGCAAATGATATCCTGGATT  
ACAAGGATGACGACGATAAAGTTTAA



[View online »](#)

**Protein Sequence:** >RC216473 representing NM\_005882  
Red=Cloning site Green=Tags(s)

MAVQESAAQLSMTLKVQEYPTLKVPEYETLNKRFRAAQKNIDRETSHVTMVVAELEKTLSGCPAVDSVVSL  
 LDGVVEKLSVLKRKAVESIQAEDESAKLCKRRIEHLKEHSSDQPAASVWKRKRMDRMMVEHLLRCGYYN  
 TAVKLARQSGIESCLEFSLRIQEFIELIRQNKRLDAVRHARKHF SQAEGSQLDEVROAMGMLAFPPDTHI  
 SPYKDLLDPARWRMLIQQFRYDNYRLHQLGNNSVFTLTQLQAGLSAIKTPQCYKEDGSSKSPDCPVCRSRL  
 NKLAQPLPMAHCANSRLVCKISGDVMNENPPMMLPNGVYVYGYNSLLSIRQDDKVVCPRTKEVFHF SQA  
 KVIIM

TRTRPLEQKLISEEDLAANDILDYKDDDDKV

**Chromatograms:** [https://cdn.origene.com/chromatograms/mk8057\\_a04.zip](https://cdn.origene.com/chromatograms/mk8057_a04.zip)

**Restriction Sites:** SgfI-MluI

**Cloning Scheme:**



\* The last codon before the Stop codon of the ORF

**ACCN:** NM\_005882

**ORF Size:** 1065 bp

**OTI Disclaimer:** The molecular sequence of this clone aligns with the gene accession number as a point of reference only. However, individual transcript sequences of the same gene can differ through naturally occurring variations (e.g. polymorphisms), each with its own valid existence. This clone is substantially in agreement with the reference, but a complete review of all prevailing variants is recommended prior to use. [More info](#)

**OTI Annotation:** This clone was engineered to express the complete ORF with an expression tag. Expression varies depending on the nature of the gene.

**Components:** The ORF clone is ion-exchange column purified and shipped in a 2D barcoded Matrix tube containing 10ug of transfection-ready, dried plasmid DNA (reconstitute with 100 ul of water).

**Reconstitution Method:**

1. Centrifuge at 5,000xg for 5min.
2. Carefully open the tube and add 100ul of sterile water to dissolve the DNA.
3. Close the tube and incubate for 10 minutes at room temperature.
4. Briefly vortex the tube and then do a quick spin (less than 5000xg) to concentrate the liquid at the bottom.
5. Store the suspended plasmid at -20°C. The DNA is stable for at least one year from date of shipping when stored at -20°C.

**RefSeq:** [NM\\_005882.5](#)

**RefSeq Size:** 1983 bp

**RefSeq ORF:** 1068 bp

**Locus ID:** 10296

**UniProt ID:** [Q7L5Y9](#)

**Cytogenetics:** 4p16.3

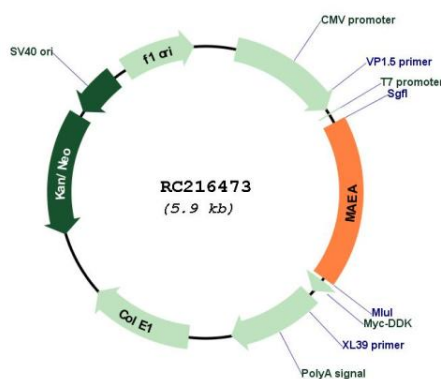
**Domains:** LisH, CTLH

**Protein Families:** Druggable Genome

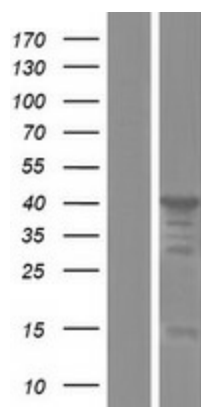
**MW:** 40.2 kDa

**Gene Summary:** This gene encodes a protein that mediates the attachment of erythroblasts to macrophages. This attachment promotes terminal maturation and enucleation of erythroblasts, presumably by suppressing apoptosis. The encoded protein is an integral membrane protein with the N-terminus on the extracellular side and the C-terminus on the cytoplasmic side of the cell. Alternative splicing results in multiple transcript variants. [provided by RefSeq, Jul 2014]

## Product images:



Circular map for RC216473



Western blot validation of overexpression lysate (Cat# [LY417000]) using anti-DDK antibody (Cat# [TA50011-100]). Left: Cell lysates from untransfected HEK293T cells; Right: Cell lysates from HEK293T cells transfected with RC216473 using transfection reagent MegaTran 2.0 (Cat# [TT210002]).