

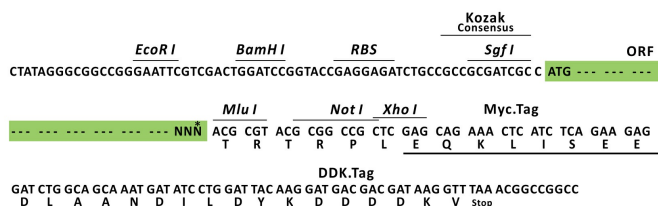
Product datasheet for RC216470L1

SLC25A23 (NM_024103) Human Tagged Lenti ORF Clone

Product data:

Product Type:	Expression Plasmids
Product Name:	SLC25A23 (NM_024103) Human Tagged Lenti ORF Clone
Tag:	Myc-DDK
Symbol:	SLC25A23
Synonyms:	APC2; MCSC2; SCaMC-3
Mammalian Cell Selection:	None
Vector:	pLenti-C-Myc-DDK (PS100064)
E. coli Selection:	Chloramphenicol (34 ug/mL)
ORF Nucleotide Sequence:	The ORF insert of this clone is exactly the same as(RC216470).
Restriction Sites:	SgfI-MluI
Cloning Scheme:	

Cloning sites used for ORF Shuttling:



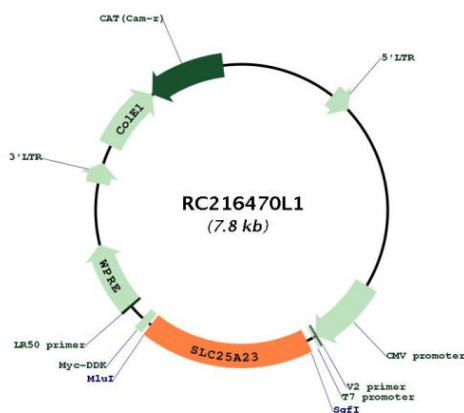
* The last codon before the Stop codon of the ORF.

ACCN:	NM_024103
ORF Size:	1404 bp

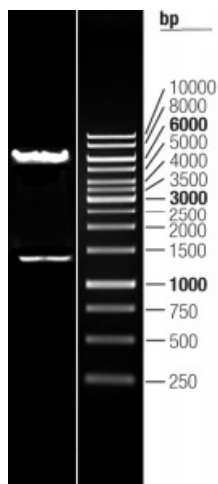


OTI Disclaimer:	The molecular sequence of this clone aligns with the gene accession number as a point of reference only. However, individual transcript sequences of the same gene can differ through naturally occurring variations (e.g. polymorphisms), each with its own valid existence. This clone is substantially in agreement with the reference, but a complete review of all prevailing variants is recommended prior to use. More info
OTI Annotation:	This clone was engineered to express the complete ORF with an expression tag. Expression varies depending on the nature of the gene.
Components:	The ORF clone is ion-exchange column purified and shipped in a 2D barcoded Matrix tube containing 10ug of transfection-ready, dried plasmid DNA (reconstitute with 100 ul of water).
Reconstitution Method:	<ol style="list-style-type: none"> 1. Centrifuge at 5,000xg for 5min. 2. Carefully open the tube and add 100ul of sterile water to dissolve the DNA. 3. Close the tube and incubate for 10 minutes at room temperature. 4. Briefly vortex the tube and then do a quick spin (less than 5000xg) to concentrate the liquid at the bottom. 5. Store the suspended plasmid at -20°C. The DNA is stable for at least one year from date of shipping when stored at -20°C.
RefSeq:	NM_024103.2
RefSeq Size:	3475 bp
RefSeq ORF:	1407 bp
Locus ID:	79085
UniProt ID:	Q9BV35
Cytogenetics:	19p13.3
Domains:	mito_carr, EFh
Protein Families:	Druggable Genome
MW:	52.2 kDa
Gene Summary:	Calcium-dependent mitochondrial solute carrier. Mitochondrial solute carriers shuttle metabolites, nucleotides, and cofactors through the mitochondrial inner membrane (PubMed:15123600). May act as a ATP-Mg/Pi exchanger that mediates the transport of Mg-ATP in exchange for phosphate, catalyzing the net uptake or efflux of adenine nucleotides into or from the mitochondria (PubMed:15123600). Acts as a regulator of mitochondrial calcium uptake via interaction with MCU and MICU1 (PubMed:24430870).[UniProtKB/Swiss-Prot Function]

Product images:



Circular map for RC216470L1



Double digestion of RC216470L1 using SgfI and MluI