

Product datasheet for RC216469

DSCAM (NM_001389) Human Tagged ORF Clone

Product data:

Product Type:	Expression Plasmids
Product Name:	DSCAM (NM_001389) Human Tagged ORF Clone
Tag:	Myc-DDK
Symbol:	DSCAM
Synonyms:	CHD2; CHD2-42; CHD2-52
Mammalian Cell Selection:	Neomycin
Vector:	pCMV6-Entry (PS100001)
E. coli Selection:	Kanamycin (25 ug/mL)
ORF Nucleotide Sequence:	>RC216469 representing NM_001389 Red=Cloning site Blue=ORF Green=Tags(s)

TTTTGTAATACGACTCACTATAGGGCGGCCGGAATTCGTCGACTGGATCCGGTACCGAGGAGATCTGCC
GCC**CGATCGCC**

ATGTGGTACTGGCTCTCTCCTTGTCCAGAGCTTCGCGAATGTTTTAGTGAAGACCTACACTCCAGCC
TCTACTTTGTCAATGCATCTCTGCAAGAGGTAGTGTGGCCAGCACCACGGGGACTCTGGTGCCCTGCC
CGCAGCAGGCATCCCTCTGTGACTCTCAGATGGTACCTAGCCACGGGCGAGGAGATCTACGATGTCCCC
GGGATCCGCCACGTCCACCCCAACGGCACTCTCCAAATTTCCCTTCCCTCCTTCAAGCTTCAGTACCT
TAATCCATGATAACTTATTATTGCACAGCTGAAAATCCTTCAGGAAAATTAGAAGTCAGGATGTCCA
CATCAAGGCTGTTTTACGGGAGCCCTATACAGTCCGTGTGGAGGACCAGAAAACCATGAGAGGCAATGTT
GCGGTCTTCAAGTGCATTATCCCTCCTCGGTGGAGGCGTACATCACTGTCTCATGGGAGAAAGACA
CTGTTTCACTTGTCTCAGGATCTAGATTTCTATCACATCCACGGGAGCCTTGTATATAAAGATGTACA
GAATGAAGATGGATTGTATAACTACCGTGCATCACGCGGCATCGATACACCGGAGAGACGAGGCAGAGC
AACAGCGCCAGACTTTTTGTATCAGACCCAGCGAACTCAGCCCCATCCATACTGGATGGGTTTGACCATC
GCAAAGCCATGGCTGGGCAGCGTGTGGAGCTGCCTTGCAAAGCGCTCGGGCACCTGAGCCAGATTACCG
CTGGCTGAAGGACAACATGCCCTGGAATTTTCAGGGAGGTTCCAGAAGACCGTGACGGGCTGCTCATT
GAGAACATTCGCCCTCGGACTCAGGCAGCTATGTTTGTGAAGTGTCCAACAGATACGGAATCGCTAAGG
TGATAGGCCGCTGTACGTGAAACAGCCACTGAAAGCCACCATCAGTCCCAGGAAGGTTAAAAGCAGCGT
GGGTAGCCAAGTTTCCTTGCCTGCAGCGTGACAGGAACTGAGGACCAGGAACTCTCCTGGTACCCTCAAT
GGTGAATCCTCAACCCTGGAAAAATGTGAGGATCACAGGGATCAACCACGAAAACCTTATAATGGATC
ACATGGTCAAAAGTGACGGGGCGCATACCAGTCTTTGTGCGCAAGGACAAGCTGTCCGCTCAAGACTA
TGTGCAGTGGTCTTGAAGATGGAACCTCCAAAATTTTCTGCCTTTAGTGAAAAGTGGTGAGTCCA
GCAGAGCCGTTTCCCTTATGTCAACGTGAAGGGAACACCTTTGCCACGATCACGTGGACCCTGGACG
ATGACCCGATTCTCAAGGTGGCAGTACCAGCATCAGCCAGATGATCACGTGGAGGGGAACGTGGTCAG
CTACCTGAACATCTCAGCTCCAGGTCCGGGACGGGGAGTCTACCGCTGCACTGCCAACAACTCGGC



[View online >](#)

GGAGTCGTCCTGTACCAGGCTCGAATAAACGTAAGAGGGCCTGCAAGCATTTCGACCAATGAAAAACATCA
 CAGCAATAGCAGGACGGGACACATACATTCACTGTCTGTGATTGGCTATCCGTATTACTCCATTAATG
 GTACAAGAACTCTAACCTGCTTCTTTCAACCACCGCCAAGTGGCATTGAGAACAATGAACTCTTAAA
 CTTTCAGATGTGCAAAAGGAAGTGGACGAGGGGAGTACACGTGCAACGTGTTGGTTCAACCACAACTCT
 CCACCAGCCAGAGCGTCCACGTGACCGTAAAGTTCGCCCTTTCATACAACCTTTGAGTTTCAAGATT
 CTCCATTGGGCAGCGGGTCTTCATCCCTGTGTGTGGTCTCAGGGGACTTACCCATCAGCATCACCTGG
 CAGAAGGATGGCCGGCCAATCCCTGGGAGCCTTGGGGTGACCATTGACAATATTGACTTACAGGACTCCT
 TGAGGATTTCCAATCTCTCGCTCATGCACAATGGGAATTACACCTGCATAGCCCGGAATGAGGCCGCCGC
 TGTGGAGCACAAAGCCAGTTGATTGTCTAGAGTTCCTCCCAAGTTTGTGGTTTCAGCCACGGGACCAGGAC
 GGGATTTATGGCAAAGCAGTTCCTCAATTGTTCTGCTGAGGGTTACCCTGTACCTACCATCGTGTGGA
 AATTCTCTAAAGGTGCTGGGGTCCCGAGTTCAGCCAATTGCCCTAAATGGCCGAATCCAAGTTCTCAG
 CAATGGGTCTGTTGCTGATCAAGCATGTCGTGGAGGAAGACAGTGGCTACTACCTTGCAAGGTGACCAAC
 GATGTGGGCGCAGACGTGAGCAAGTCCATGTACCTCACGGTAAAATTCTCGCATGATAACATCCTATC
 CAAATACTACCCTGGCCACGCAGGGGCAGAAAAGGAGATGAGCTGCACGGCGCATGGTGAAGGCCAT
 TATAGTCCGCTGGGAGAAGGAGGACCGAATCATAACCCTGAGATGGCCGTTATCTTGTGTCCACCAAG
 GAGGTGGGAGAAGAGGTATTTCTACTCTGCAGATTTTGCCAACCTGTGAGAGAAGATTCTGGTTCTTTT
 CCTGCCATGCTATTAATTCTTATGGGGAGGACCGTGAATAAATCAGCTCACAGTGAAGAGCCCCCAGA
 CCCTCCGAAATTGAGATCAAAGATGTCAAAGCACGCACAATTACGCTCAGGTGGACCATGGGGTTGAT
 GGAAACAGTCCCATCACAGGCTACGATATTGAATGCAAAAATAAATCAGACTCCTGGGATTCTGCTCAGA
 GAACCAAAGATGTTTCCCTCAGCTGAACCTCGGCCACCATCATTGATATCCACCTTCTCCACCTACAG
 CATCCGCATGTACGCAAGAACCGGATTGGCAAGAGCGAGCCAGCAACGAGCTCACCATCACGGCGGAC
 GAGGCAGCTCTGATGGTCCACCTCAGGAAGTTCACCTGGAGCTATATCATCTCAGAGCATCAGGGTCA
 CATGGAAGGCTCCAAGAAACATTTGCAAAAATGGGATTATCCGTGGCTACCAAAATAGTTACCGAGATA
 CAGCACTGGGGTAACTTCCAATTCAACATTATCAGTGTGACACACAGCGGGGACAGTGAGGTTTACACC
 CTGGACAACCTGAATAAGTTCACCTCAGTACGGCCTGGTGGTGCAGGCCTGTAACCGGGCCGGCACGGGGC
 CTTCTTCTCAGGAAATCATCACCACCACTCTCGAGGATGTGCCAGTTACCCCCCGAAAATGTCCAAGC
 CATAGCAACATCACCAGAAAGCATATCAATATCCTGGTCCACACTTTCCAAGGAAGCCTTGAATGGAATT
 CTCCAGGGGTTTCAGAGTCATTTACTGGGCCAACCTCATGGACGGAGAGCTGGGTGAGATTTAAAACATCA
 CCACCACACAGCCTTCACTGGAGCTGGACGGGCTGAAAAGTACACCAACTACAGCATCCAGGTGCTGGC
 CTTACCCCGCGCAGGAGACGGGGTCAAGAGTGAGCAGATCTTACCCGGACCAAAGAGGATGTTCCAGGT
 CCTCCCGGGGTGTGAAGGCAGCGGGCCTCAGCCTCCATGGTCTTTGTGCTCTGGCTTCCCCCTCTCA
 AGCTGAACGGGCATCATCCGAAAGTACACTGTATTCTGCTCCCACCCCTATCCACAGTGATCAGCGAGTT
 TGAGGCCTCTCCCGACTCGTTTTCTACAGAATCCCAACCTGAGTAGGAATCGTCAGTACAGCGTCTGG
 GTGGTGGCTGTTACTTACGCCGGAAGAGGCAACAGCAGTGAATCATCACAGTTCGAGCCACTAGCAAAAAG
 CTCCTGCACGAATCCTGACCTTCACTGGGACAGTGACTACTCCATGGATGAAAGACATTGTCTTGCTTG
 TAAGGCTGTTGGGGACCTTCTCCTGCAGTCAAATGGATGAAAGACAGTAACGGGACACCCAGTCTAGTA
 ACGATTGATGGGCGGAGGAGCATCTTTAGCAACGGAAGCTTCAATATTTCGCACGGTGAAGCAGAAGACT
 CCGGCTATTACAGCTGCATTGCCAATAACAACCTGGGATCTGATGAAATATTTTTAACTTACAAGTACA
 AGTCCACCAGATCAGCCTCGGTTACAGTCTCCAAGACCAGTCTTCCATCACCTTCTTGGCTC
 CCTGGAGACAACGGGGCAGCTCTATCAGAGGATACATACTGCAGTACTCCGAGGACAATAGTGAGCAGT
 GGGGGAGTTTTCCAATCAGCCCCAGCGAACGTTCTATCGCTTGAAAATCTCAAATGTGGGACTTGGTA
 TAAGTTACACTGACAGCCAAAATGGAGTGGGCCAGGGCGCATAAGTGAATCATAGAAGCAAAGACC
 TTAGGAAAAGAGCCCGTCTCAAAGGAGCAGGAGCTGTTTGCCAGCATCAACACCACACGCGTGAGGC
 TGAACCTCATTGGCTGGAATGATGGCGGCTGCCCATCACCTCCTTCACTAGAGTACAGGCCCTTTGG
 GACCACAGTTTGGACCACAGCTCAGAGGACCTCTCTCCAAGTCTACATCCTGTATGACCTGCAGGAA
 GCCACCTGGTATGAGCTGCAGATGCGGGTGTGCAACAGTGCAGGGTGCAGGAGGAGGAGGAGGAGGCT
 CTACGCTGAACACTACGATGGCAGTACAATCCTCCACTCATTAAAGTCAGTTGTCCAAAACGAAGAAGGGCT
 GACGACCAACGAGGGGCTCAAGATGCTGGTGACCATCTCCTGTATCCTGGTGGGGTCTTGTGCTGTTT
 GTGCTCCTGCTGTTGTGCGGAGGAGGGCGGGAGCAGAGGCTAAAGAGGCTGCGAGATGCAAAGAGTT
 TAGCTGAAATGCTCATGAGTAAGAATACCCGGACTTCAAGTACGTTAAGCAAGCAACAGCAGACCCCTGCG
 AATGCACATCGACATACCCAGGGCTCAGCTTTTGATTGAAGAGAGAGACAGGATGGAGACCATGATGAT
 CGCTCCACGGTCTGTTGACGGATGCTGACTTTGGAGAGGCAGCTAAGCAGAAGTCCCTGACGGTCACTC

ACACGGTCCATTACCAATCGGTGTCTCAGGCCACTGGGCCCTTAGTGGATGTTTCAGACGCTCGGCCGGG
AACGAATCCCACCACCAGGAGGAATGCCAAGGCTGGGCCACAGCGAGAAACCGCTATGCCAGCCAGTGG
ACCCTCAACCGACCCACCCACCATCTCAGCACACCCCTACCACAGACTGGAGGCTGCCAACACCCA
GGGCTGCAGGATCAGTAGACAAAGAGAGCGACAGTTACAGCGTCAGCCCCCGAAGACACAGATCGAGC
AAGAAGCAGCATGGTCTCCACAGAAAGTGCCTCCTCCACTACGAAGAACTGGCCAGGGCCTACGAACAC
GCCAAGATGGAAGAGCAACTGAGGCACGCCAAGTTCACCATCACGGAGTGCTTCATATCAGACACGTCAT
CGGAGCAGTTGACGGCAGGGACAATAGTACACGGACAGTCTGACCTCCAGCACCCCTCCGAATCGGG
AATCTGCAGGTTCACTGCATCTCCCCCAAACCTCAGGATGGAGGAAGAGTAATGAATATGGCAGTTCCA
AAGGCACATCGGCCAGGTGACCTCATACTTGCCTCCATACCTTAGAATGGACTTTTTGTAAACCGAG
GTGGTCCAGGCACCAGCAGGGACCTGAGCTTAGGACAAGCATGCTTGAACCTCAGAAAAGCCGGACCT
GAAGCGCCCCACGGTCTGGAGCCATCCCGATGGAAGCCGCTCCTCCGCTCCTCCACGAGAGAAGGA
CAGTCGTGGCAGCCGGGGCCGTGGCCACATTACCTCAGCGGGAGGGAGCAGAGCTGGGACAGGCAGCTA
AAATGAGCAGCTCCAAGAATCACTGCTGACTCCCGGGCCATTGAAAGGAAACAATCCTTACGCAA
ATCTTACACCCTGGTA

AGCGGACCGACGCGTACGCGGCCGCTCGAGCAGAAACTCATCTCAGAAGAGGATCTGGCAGCAAATGATATCC
TGGATTACAAGGATGACGACGATAAGGTTAA

Protein Sequence:

>RC216469 representing NM_001389
Red=Cloning site Green=Tags(s)

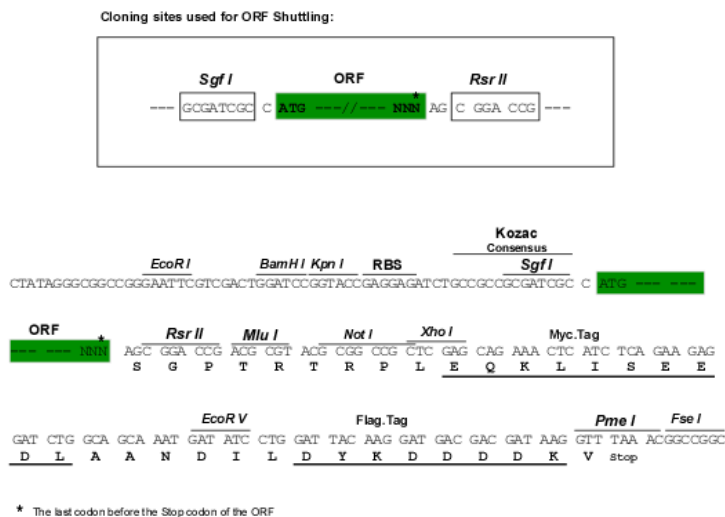
MWILALSLFQSFANVFSDELHSSLYFVNASLQEVVFASTTGTLVPCPAAGIPPVTLRWYLATGEEIYDVP
GIRHVHPNGTLQIFPFPSSSTLIHDNTYYCTAENPSGKIRSQDVHIKAVLREPYTVRVEDQKTRMGNV
AVFKCIIPSSVEAYITVVSWEKDTVSLVSGSRFLITSTGALYIKDVQNEGLYNYRCITRHYRTGETRQS
NSARLFVSDPANSAPSILDGFDHRKAMAGQRVELPCKALGHPEPDYRWLKDNPMLLESGRFQKTVTGLLI
ENIRPSDSGYSVCEVSNRYGTAKVIGRLVYKQPLKATISPRKVKSSVGSQVLSVSVTGTEDQELSWYRN
GEILNPGKNVRIITGINHENLIMDHMVKSDGGAYQCFVRKDKLSAQDYVQVLEDGTPKIIISAFSEKVVSP
AEPVSLMCNVKGTPLPTITWTLDDDPILKGGSHRISQMITSEGNVSYLNISSSQVRDGGVYRCTANNSA
GVVLYQARINVRGPASIRPMKNITAIAGRDTYIHRVIGYPPYYSIKWYKNSNLLPFNHRQVAFENNGTLK
LSDVQKEVDEGEYTCNVLVQPQLSTSQSVHVTVKVPPIQPFEPFRFSIGQRVFI PCVVVSGDLPITITW
QKDGRPIPGSLGVTIDNIDFTSSLRISNLSLMHNGNYTCIARNEAAAVEHQSQLIVRVPPKFFVVQPRDQD
GIYGKAVILNCSAEGYPVPTIVWKFSGAGVPQFQPIALNGRIQVLSNGSLLIKHVVEEDSGYYLCKVSN
DVGADVSKSMYLVKIPAMITSYPNTTLATQGQKEMSCAHGEKPIIVRWEKEDRIINPEMARYLVSTK
EVGEEVISTLQILPTVREDSGFFSCHAINSYGEDRGIIQLTVQEPDPPEIEIKDVKARTITLRWTMGFD
GNSPITGYDIECKNKSDSWDAQRKDVSPQLNSATIIDIHPSSTYSIRMYAKNRIGKSEPSNELTITAD
EAAPDGGPPQEVHLEPISSQSIRVTKAPKKHLQNGIIRGYQIGYREYSTGGNFQFNIIISVDTSGDSEVYT
LDNLNKFQYGLVVQACNRAGTGPSSQEIITTTLEDVPSYPPENVQAIATSPESISISWSTLSKEALNGI
LQGRFVIYWANLMDGELGEIKNITTTQPSLELDGLEKYTNYSIQVLAFTAGDGRVSEQIFTRTKEDVPG
PPAGVKAASASMVVSWLPLKLNIGIRKYTVFCSHPYPTVISEFEASPDSFSYRIPNLSRNRQYSVW
VVAVTSAGRGSSEIITVEPLAKAPARILTFSGTVTPWMDIVLPCKAVGDPSPAVKWMKDSNGTPSLV
TIDGRRSIFSNGSFIIRTVKAEDSGYYSIANNWGSDEIILNLQVQVPPDQPRLTVSKTSSSITLSWL
PGDNGGSSIRGYILQYSEDNSEQWGSFPI SPERSYRLENLCKGTWYKFTLTAQNGVGPGRISEIEAKT
LGKEPQFSKEQELFASINTTRVRLNLIGWNDGGCPITSFTLEYRPFGTTVWTTAQRSLSKSYILYDLQE
ATWYELQMRVCNSAGCAEKQANFATLNYDGGSTIPPLIKSVVQNEEGLTTNEGLKMLVTISICILVGVLLLF
VLLL VVRRRRRREQLKRLRDAKSLAEMLSKNTRTSDTL SKQQQLRMHIDIPRAQLLIEERDTMETIDD
RSTVLLTDADFGEAAKQKSLTVHTVHYQSVSQATGPLVDVSDARPGTNPTTRRNAKAGPTARNRYASQW
TLNRPHPTISAHTLTDDWRLPTPRAAGSVDKESDSYSVSPSQDTRARSSMVSTESASSTYEELARAYEH
AKMEEQLRHAKFTITECFISDTSSEQLTAGTNEYDLSLTSSTPSESIGICRFASPPKPDGGRVMNMAVP
KAHRPGDLIHLPPYLRMDFLLNRGGPGTSRDL SLGQACLEPQKSRTLKRPTVLEPIPEMAASSASSTREG
QSWQPGAVATLPQREGAELGQAAKMSSSQESLLDSRGLKGNPNYAKSYTLV

SGPTRRRLEQKLI SEEDLAANDILDYKDDDDKV

Chromatograms: https://cdn.origene.com/chromatograms/mk8007_e12.zip

Restriction Sites: SgfI-RsrII

Cloning Scheme:



ACCN: NM_001389

ORF Size: 6036 bp

OTI Disclaimer: The molecular sequence of this clone aligns with the gene accession number as a point of reference only. However, individual transcript sequences of the same gene can differ through naturally occurring variations (e.g. polymorphisms), each with its own valid existence. This clone is substantially in agreement with the reference, but a complete review of all prevailing variants is recommended prior to use. [More info](#)

OTI Annotation: This clone was engineered to express the complete ORF with an expression tag. Expression varies depending on the nature of the gene.

Components: The ORF clone is ion-exchange column purified and shipped in a 2D barcoded Matrix tube containing 10ug of transfection-ready, dried plasmid DNA (reconstitute with 100 ul of water).

Reconstitution Method:

1. Centrifuge at 5,000xg for 5min.
2. Carefully open the tube and add 100ul of sterile water to dissolve the DNA.
3. Close the tube and incubate for 10 minutes at room temperature.
4. Briefly vortex the tube and then do a quick spin (less than 5000xg) to concentrate the liquid at the bottom.
5. Store the suspended plasmid at -20°C. The DNA is stable for at least one year from date of shipping when stored at -20°C.

RefSeq: [NM_001389.5](#)

RefSeq Size: 7110 bp

RefSeq ORF: 6039 bp

Locus ID: 1826

UniProt ID: [O60469](#)

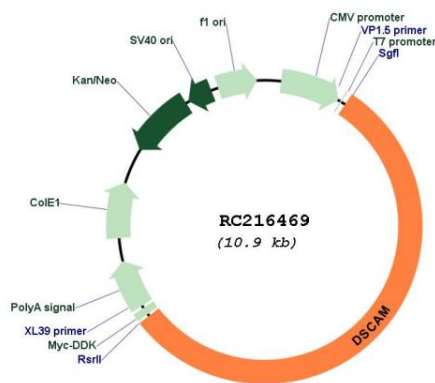
Cytogenetics: 21q22.2

Protein Families: Transmembrane

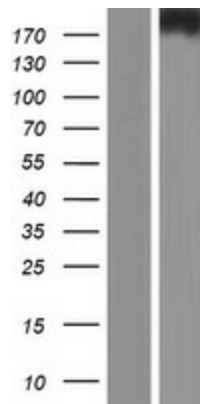
MW: 222.26 kDa

Gene Summary: This gene is a member of the immunoglobulin superfamily of cell adhesion molecules (Ig-CAMs), and is involved in human central and peripheral nervous system development. This gene is a candidate for Down syndrome and congenital heart disease (DSCHD). A gene encoding a similar Ig-CAM protein is located on chromosome 11. Alternatively spliced transcript variants encoding multiple isoforms have been observed for this gene. [provided by RefSeq, Oct 2012]

Product images:



Circular map for RC216469



Western blot validation of overexpression lysate (Cat# [LY419962]) using anti-DDK antibody (Cat# [TA50011-100]). Left: Cell lysates from untransfected HEK293T cells; Right: Cell lysates from HEK293T cells transfected with RC216469 using transfection reagent MegaTran 2.0 (Cat# [TT210002]).