

Product datasheet for **RC216467**

DET1 (NM_017996) Human Tagged ORF Clone

Product data:

Product Type:	Expression Plasmids
Product Name:	DET1 (NM_017996) Human Tagged ORF Clone
Tag:	Myc-DDK
Symbol:	DET1
Mammalian Cell Selection:	Neomycin
Vector:	pCMV6-Entry (PS100001)
E. coli Selection:	Kanamycin (25 ug/mL)



[View online »](#)

ORF Nucleotide Sequence:

>RC216467 representing NM_017996
 Red=Cloning site Blue=ORF Green=Tags(s)

TTTTGTAATACGACTCACTATAGGGCGGCCGGAATTCGTCGACTGGATCCGGTACCGAGGAGATCTGCC
 GCC**CGGATCGCC**

ATGGTGGGACAGATACTAAAAAGAGATGTGATAATGGATCATCATGTTTCTACCATCAAGCCTCGAAGAA
 TCCAAAACCAAAATGTCATTACCGCTTGGAACGCCGGCGGATCAGTTCAGGCAAGGCAGGTACCCACTG
 GCACCAAGTCCGAGTGTTCCATCAGAATGTCTTCCCAACTTCACAGTTGTCAACGTTGAAAAGCCTCT
 TGTCTTTCGCTAAATTCTCACCTGATGGACGCTACTTTATTGCTTTTTCTCAGACCAGACATCTCTTG
 AAATCTATGAGTACCAGGGCTGCCAGGCAGCAGAGGACCTACTGCAGGGATACGAAGGAGAAATCCTGTC
 CAATGGCAATGACCAGCGGTGAGTGAATATCCGGGGCCGGCTCTTTGAACGCTTTTTTGTCTGCTGCAC
 ATTACCAATGTTGCGCCAATGGTGAGCACCTGAACCGGAGTGTAGTCTCTTCACTGATGACTGCCGCT
 GTGTCATCGTGGCTCAGCTGCCTACCTCCCAGATGAGCCTCACCTCCATTTTTGAGGTATATCGGAA
 CAGTGAATCAGTGACCCCAACCCAGGTCCCCTCTAGAAGACTATCCCTCCATATCATTGACCTTCAC
 ACCGGCCGCTTATGTGATACACGCACGTTCAAGTGTGACAAGGTGGTCTTGTACACAACCAAGGGCTGT
 ACTTGTACAAAAACATCCTGGCCATCTTGTCTGTGCAACAACAGACCATCCATGTCTTCCAGGTGACTCC
 TGAAGGCACTTTTCATTGATGTGCGGACATTGGCCGCTTTTGCTATGAGGATGACCTGCTCACTGTGTC
 GCTGTTTTCCCTGAGGTACAGCGGGACAGTCAGACAGGCATGGCCAATCCCTTTAGGGATCCCTTTCATCA
 ATCCCTCAAACACCGGTTGCTGGTATATTTGTGGCGCCGGGCAGAACAGGATGGTAGTGAATGGCCAA
 GAGGCGCTTCTCCAGTATTTGACCAACTGCGGCAGCTGCGAATGTGAAAAATGCAGCTTCTGGATGAA
 AACCCACTGTTTATCAAGTACACTAGTGAGGATGTAGTAACACTGCGAGTCACAGATCCATCACAGGCAT
 CTTTCTTTGGTGTACAATATGGTGACGACAGAGGTGATTGCTGTGTTGAGAATACATCAGATGAGCT
 TTTGGAGCTCTTTGAGAACTTCTGTGACCTTTTTCGTAATGCTACCCTGCACAGTGAAGTTCAGTTTCCC
 TGCTCAGCTTCTAGCAACAATTTTGAAGGCAGATCCAGCGCCGGTTCAAAGACTATTATAAATGCCA
 AGTATGGAGGGCACACAGAGGCAGTACGCCGGCTGCTGGGTGAGTCCCATCAGTGTCTCAGTCTTACAG
 CGGTAGCCCTATCTGGATTTGCTCTCTTCAAGTATGATGACAAGTGGGTATCTGTGATGGAGCGGCC
 AAGACTTGTGGAGATCACCAATCAGGTTCTATGCCCGGACTCGGGCTGCTCAAGTTTGGATCCAGG
 CGGGGTATTGGCCGCCCATCAACCACAGTGGCAGCCTTGTGCCTTACCTTTCACCTTTTACCTTTTGA
 GCCTTTCGCTATTTCTGTGCAGAGGACTAATGCTGAGTATGTTGTCAACTCCATATGCGACTGCTGC
 ACG

ACGCGTACGCGGCCGCTCGAGCAGAAACTCATCTCAGAAGAGGATCTGGCAGCAAATGATATCCTGGATT
 ACAAGGATGACGACGATAAGGTTTAA

Protein Sequence:

>RC216467 representing NM_017996
 Red=Cloning site Green=Tags(s)

MVGQILKRDVIMDHHVSTIKPRRIQNQNVIHRLERRRISGKAGTHWHQVRVHFQNVFPNFTVVNVKEPP
 CFLRKFS PDGRYFI AFSSDQTSLEIYEYQGCQAAEDLLQGYEGEILSNGNDQRSVNIRGLFERFFVLLH
 ITNVAANGEHLNRECSLFTDDCRCVIVGSAAYLPDEPHPPFFEVYRNSESVTPNPRSPLEDYSLHIIDLH
 TGRLCDTRTFKCDKVVLSHNQGLYLKNIILSVQQQTIHVVFQVTPGTFIDVRTIGRFYEDDLLTVS
 AVFPEVQRDSQTGMANPFRDPFINSLKHRLLVYLWRAEQDGSAMAKRRFFQYFDQLRQLRMWKMQLLDE
 NHLFIKYTSEDVVTLRVTDPSQASFFVVYVMVTEVIAVFENTSDELLELFENFCDLFRNATLHSEVQFP
 CSASSN FARQIQRRFKDTIINAKYGGHTEAVRRLGLQLPISAQSYSGSPYLDLSLFSYDDKWSVMERP
 KTCGDHPIRFYARDSGLLKFEIQAGLLGRPINHTVRRLVAFTFHPFEPFAISVQRTNAEYVVNFHMRHCC
 T

TRTRPLEQKLISEEDLAANDILDYKDDDDKV

Chromatograms:

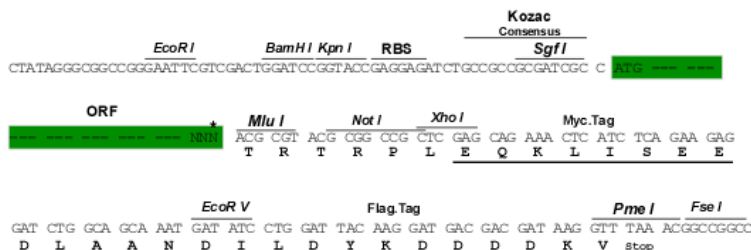
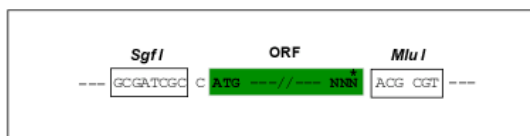
https://cdn.origene.com/chromatograms/mk8016_h02.zip

Restriction Sites:

SgfI-MluI

Cloning Scheme:

Cloning sites used for ORF Shutting:



* The last codon before the Stop codon of the ORF

ACCN: NM_017996

ORF Size: 1683 bp

OTI Disclaimer: The molecular sequence of this clone aligns with the gene accession number as a point of reference only. However, individual transcript sequences of the same gene can differ through naturally occurring variations (e.g. polymorphisms), each with its own valid existence. This clone is substantially in agreement with the reference, but a complete review of all prevailing variants is recommended prior to use. [More info](#)

OTI Annotation: This clone was engineered to express the complete ORF with an expression tag. Expression varies depending on the nature of the gene.

Components: The ORF clone is ion-exchange column purified and shipped in a 2D barcoded Matrix tube containing 10ug of transfection-ready, dried plasmid DNA (reconstitute with 100 ul of water).

Reconstitution Method:

1. Centrifuge at 5,000xg for 5min.
2. Carefully open the tube and add 100ul of sterile water to dissolve the DNA.
3. Close the tube and incubate for 10 minutes at room temperature.
4. Briefly vortex the tube and then do a quick spin (less than 5000xg) to concentrate the liquid at the bottom.
5. Store the suspended plasmid at -20°C. The DNA is stable for at least one year from date of shipping when stored at -20°C.

RefSeq: [NM_017996.4](#), [NP_060466.2](#)
RefSeq Size: 2315 bp

RefSeq ORF: 1686 bp

Locus ID: 55070

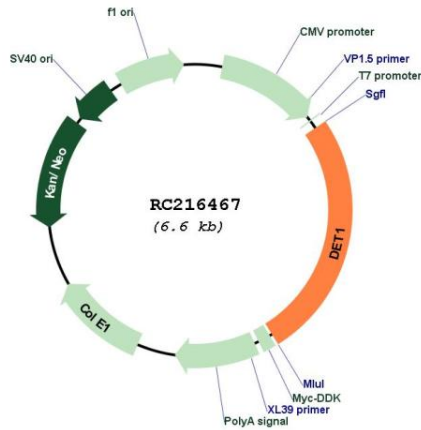
UniProt ID: [Q7L5Y6](#)
Cytogenetics: 15q26.1

Protein Pathways: Ubiquitin mediated proteolysis

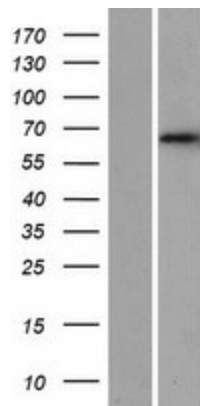
MW: 64.9 kDa

Gene Summary: Component of the E3 ubiquitin ligase DCX DET1-COP1 complex, which is required for ubiquitination and subsequent degradation of target proteins. The complex is involved in JUN ubiquitination and degradation.[UniProtKB/Swiss-Prot Function]

Product images:



Circular map for RC216467



Western blot validation of overexpression lysate (Cat# [LY413388]) using anti-DDK antibody (Cat# [TA50011-100]). Left: Cell lysates from untransfected HEK293T cells; Right: Cell lysates from HEK293T cells transfected with RC216467 using transfection reagent MegaTran 2.0 (Cat# [TT210002]).