

Product datasheet for RC216466

GIPC (GIPC1) (NM_005716) Human Tagged ORF Clone

Product data:

Product Type:	Expression Plasmids
Product Name:	GIPC (GIPC1) (NM_005716) Human Tagged ORF Clone
Tag:	Myc-DDK
Symbol:	GIPC
Synonyms:	C19orf3; GIPC; GLUT1CBP; Hs.6454; IIP-1; NIP; OPDM2; RGS19IP1; SEMCAP; SYNECTIN; SYNECTIN; TIP-2
Mammalian Cell Selection:	Neomycin
Vector:	pCMV6-Entry (PS100001)
E. coli Selection:	Kanamycin (25 ug/mL)
ORF Nucleotide Sequence:	>RC216466 representing NM_005716 Red=Cloning site Blue=ORF Green=Tags(s)

TTTTGTAATACGACTCACTATAGGGCGGCCGGAATTCGTCGACTGGATCCGGTACCGAGGAGATCTGCC
GCCGCGATCGCC

ATGCCGCTGGGACTGGGCGCGGAAAAAGCGCCCCCTCTAGTGAAAAATGAGGAGGCTGAGCCAGGCC
GTGGAGGGCTGGGCGTGGGGGAGCCAGGGCCTCTGGGCGGAGGTGGGTCGGGGGGCCCCAAATGGGCTT
GCCCCCCTCCCCAGCCCTGCGGCCCGCCTCGTGTCCACACCCAGCTGGCCATGGCAGTCCCCT
GGCCGCATCGAGGGCTTCAACAACGTCAAGGAGCTGTATGGCAAGATCGCCGAGGCTTCCGCCTGCCAA
CTGCCGAGGTGATGTTCTGCACCCTGAACACCCACAAAGTGGACATGGACAAGCTCCTGGGGGGCCAGAT
CGGGCTGGAGGACTTCATCTTCGCCACGTGAAGGGCAGCGCAAGGAGGTGGAGGTGTTCAAGTCGGAG
GATGCACTCGGGCTCACCATCACGGACAACGGGGCTGGCTACGCCTTCATCAAGCGCATCAAGGAGGGCA
GGTGATCGACCACATCCACCTCATCAGCGTGGGCGACATGATCGAGGCCATTAACGGGCAGAGCCTGCT
GGGCTGCCGCACTACGAGGTGGCCCGGCTGCTCAAGGAGCTGCCCGAGGCCGTACCTTACGCTGAAG
CTCACGGAGCCTCGAAGGCCTTCGACATGATCAGCCAGCGTTCAGCGGGTGGCCGCCCTGGCTCTGGCC
CACAATGGGCACTGGCCGAGGGACCCTGCGGCTCCGATCCCAGGGCCCCGCCACGGTGGAGGATCTGCC
CTCTGCCTTTGAAGAGAAGGCCATTGAGAAGGTGGATGACCTGCTGGAGAGTTACATGGGTATCAGGGAC
ACGGAGCTGGCGGCCACCATGGTGGAGCTGGGAAAGGACAAAAGGAACCCGGATGAGCTGGCCGAGGCC
TGGACGAACGGCTGGGTGACTTTGCCTCCCTGACGAGTTCGCTTTGACGCTCTGGGCGCCATTGGGA
CGCCAAGGTCGGCCGCTAC

ACGCGTACGCGGCCGCTCGAGCAGAACTCATCTCAGAAGAGGATCTGGCAGCAAATGATATCCTGGATT
ACAAGGATGACGACGATAAGGTTTAA



[View online »](#)

Reconstitution Method:

1. Centrifuge at 5,000xg for 5min.
2. Carefully open the tube and add 100ul of sterile water to dissolve the DNA.
3. Close the tube and incubate for 10 minutes at room temperature.
4. Briefly vortex the tube and then do a quick spin (less than 5000xg) to concentrate the liquid at the bottom.
5. Store the suspended plasmid at -20°C. The DNA is stable for at least one year from date of shipping when stored at -20°C.

RefSeq: [NM_005716.4](#)

RefSeq Size: 1947 bp

RefSeq ORF: 1002 bp

Locus ID: 10755

UniProt ID: [O14908](#)

Cytogenetics: 19p13.12

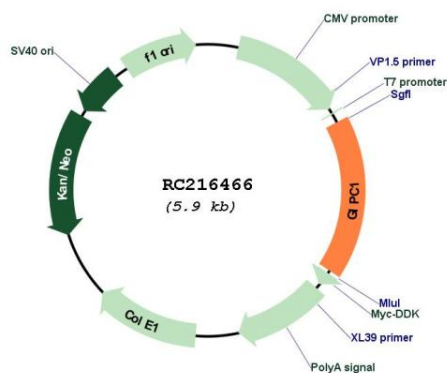
Domains: PDZ

Protein Families: Druggable Genome

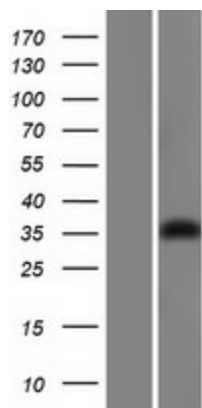
MW: 35.9 kDa

Gene Summary: GIPC1 is a scaffolding protein that regulates cell surface receptor expression and trafficking (Lee et al., 2008 [PubMed 18775991]).[supplied by OMIM, Apr 2009]

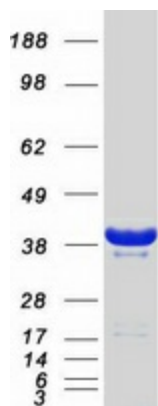
Product images:



Circular map for RC216466



Western blot validation of overexpression lysate (Cat# [LY417114]) using anti-DDK antibody (Cat# [TA50011-100]). Left: Cell lysates from untransfected HEK293T cells; Right: Cell lysates from HEK293T cells transfected with RC216466 using transfection reagent MegaTran 2.0 (Cat# [TT210002]).



Coomassie blue staining of purified GIPC1 protein (Cat# [TP316466]). The protein was produced from HEK293T cells transfected with GIPC1 cDNA clone (Cat# RC216466) using MegaTran 2.0 (Cat# [TT210002]).