

## Product datasheet for **RC216459**

### CD161 (KLRB1) (NM\_002258) Human Tagged ORF Clone

#### Product data:

**Product Type:** Expression Plasmids  
**Product Name:** CD161 (KLRB1) (NM\_002258) Human Tagged ORF Clone  
**Tag:** Myc-DDK  
**Symbol:** CD161  
**Synonyms:** CD161; CLEC5B; hNKR-P1A; NKR; NKR-P1; NKR-P1A; NKR-P1A  
**Mammalian Cell Selection:** Neomycin  
**Vector:** pCMV6-Entry (PS100001)  
**E. coli Selection:** Kanamycin (25 ug/mL)  
**ORF Nucleotide Sequence:** >RC216459 representing NM\_002258.  
Blue=ORF Red=Cloning site Green=Tag(s)

```
GCTCGTTTAGTGAACCGTCAGAATTTGTAAACGACTCACTATAGGGCGCCGGGAATTCGTCGACTG
GATCCGGTACCGAGGAGATCTGCCGCCGCGATCGCC
ATGGACCAACAAGCAATATATGCTGAGTAAACTTACCCACAGACTCAGGCCAGAAAGTCTTACCT
TCATCTCTTCTCGGGATGTCTGTCAAGGTTACCTTGGCATCAATTTGCCCTGAAACTAGCTGTGCT
GGGATTATTCTCTTGTCTTGGTTGTTACTGGTTGAGTGTTCAGTGACATCCTAATACAGAAATCA
TCAATAGAAAAATGCAGTGTGGACATTCAACAGAGCAGGAATAAAACAACAGAGAGACCGGGTCTCTTA
AACTGCCCAATATATTGGCAGCAACTCCGAGAGAAATGCTTGTTATTTTCTCACACTGTCAACCCTTG
AATAACAGTCTAGCTGATTGTTCCACAAAGAATCCAGCCTGCTGCTTATTCGAGATAAGGATGAATTG
ATACACACACAGAACCTGATACGTGACAAAGCAATTCTGTTTTGGATTGGATTAATTTTTCATTATCA
GAAAAGAACTGGAAGTGATAAACCGCTCTTTTTAAATTCTAATGACTTAGAAATTAGAGGTGATGCT
AAAGAAAACAGCTGATTTCCATCTCACAGACATCTGTGTATTCTGAGTACTGTAGTACAGAAATCAGA
TGGATCTGCCAAAAGAACTAACACCTGTGAGAAATAAAGTGTATCCTGACTCT
ACGCGTACGCGGCCGCTCGAGCAGAAACTCATCTCAGAAGAGGATCTGGCAGCAAATGATATCCTGGAT
TACAAGGATGACGACGATAAGGTTTAAACGGCCGGC
```

**Protein Sequence:** >Peptide sequence encoded by RC216459  
Blue=ORF Red=Cloning site Green=Tag(s)

```
MDQQAIYAEINLPTDSGPESSPSSLPRDVCQGSPPWHQFALKLSCAGIILLVLVVTGLSVSVTSLIQKS
SIEKCSVDIQSRNKTERPGLLNCPYIYQQLREKCLLFSHTVNPWNNSLADCSTKESLLLIRDKDEL
IHTQNLIRDKAILFWIGLNFSLSEKNWKWINGSFLNSNDLEIRGDAKENSISISQTSVYSEYCYSTEIR
WICQKELTPVRNKVYPDS
TRTRPLEQKLISEEDLAANDILDYKDDDDKV
```

**Chromatograms:** [https://cdn.origene.com/chromatograms/mk6444\\_h07.zip](https://cdn.origene.com/chromatograms/mk6444_h07.zip)



[View online »](#)

Restriction Sites: SgfI-MluI

Cloning Scheme:



ACCN: NM\_002258

ORF Size: 675 bp

OTI Disclaimer: The molecular sequence of this clone aligns with the gene accession number as a point of reference only. However, individual transcript sequences of the same gene can differ through naturally occurring variations (e.g. polymorphisms), each with its own valid existence. This clone is substantially in agreement with the reference, but a complete review of all prevailing variants is recommended prior to use. [More info](#)

OTI Annotation: This clone was engineered to express the complete ORF with an expression tag. Expression varies depending on the nature of the gene.

Components: The ORF clone is ion-exchange column purified and shipped in a 2D barcoded Matrix tube containing 10ug of transfection-ready, dried plasmid DNA (reconstitute with 100 ul of water).

Reconstitution Method:

1. Centrifuge at 5,000xg for 5min.
2. Carefully open the tube and add 100ul of sterile water to dissolve the DNA.
3. Close the tube and incubate for 10 minutes at room temperature.
4. Briefly vortex the tube and then do a quick spin (less than 5000xg) to concentrate the liquid at the bottom.
5. Store the suspended plasmid at -20°C. The DNA is stable for at least one year from date of shipping when stored at -20°C.

Note: Plasmids are not sterile. For experiments where strict sterility is required, filtration with 0.22um filter is required.

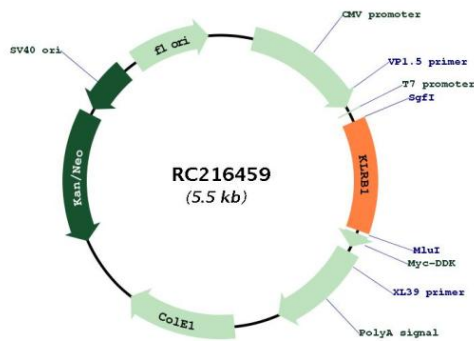
RefSeq: [NM\\_002258.3](#)

RefSeq Size: 740 bp

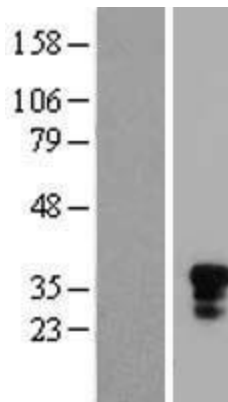
RefSeq ORF: 678 bp

**Locus ID:** 3820  
**UniProt ID:** [Q12918](#)  
**Cytogenetics:** 12p13.31  
**Protein Families:** Transmembrane  
**MW:** 25.4 kDa  
**Gene Summary:** Natural killer (NK) cells are lymphocytes that mediate cytotoxicity and secrete cytokines after immune stimulation. Several genes of the C-type lectin superfamily, including the rodent NKRP1 family of glycoproteins, are expressed by NK cells and may be involved in the regulation of NK cell function. The KLRB1 protein contains an extracellular domain with several motifs characteristic of C-type lectins, a transmembrane domain, and a cytoplasmic domain. The KLRB1 protein is classified as a type II membrane protein because it has an external C terminus. [provided by RefSeq, Jul 2008]

### Product images:



Circular map for RC216459



Western blot validation of overexpression lysate (Cat# [LY419438]) using anti-DDK antibody (Cat# [TA50011-100]). Left: Cell lysates from untransfected HEK293T cells; Right: Cell lysates from HEK293T cells transfected with RC216459 using transfection reagent MegaTran 2.0 (Cat# [TT210002]).