

Product datasheet for RC216456

ADNP (NM_181442) Human Tagged ORF Clone

Product data:

Product Type:	Expression Plasmids
Product Name:	ADNP (NM_181442) Human Tagged ORF Clone
Tag:	Myc-DDK
Symbol:	ADNP
Synonyms:	ADNP1; HVDAS; MRD28
Mammalian Cell Selection:	Neomycin
Vector:	pCMV6-Entry (PS100001)
E. coli Selection:	Kanamycin (25 ug/mL)
ORF Nucleotide Sequence:	>RC216456 representing NM_181442 Red=Cloning site Blue=ORF Green=Tags(s)

TTTTGTAATACGACTCACTATAGGGCGGCCGGAATTCGTCGACTGGATCCGGTACCGAGGAGATCTGCC
GCC**CGATCGCC**

ATGTTCCAACCTCCTGTCAACAATCTTGGCAGTTAAGAAAAGCCCGGAAAACCTGTGAAAAAATACTTA
GTGACATTGGGTTGGAATACTGTAAAGAACATATAGAAGATTTTAAACAATTTGAACCTAATGACTTTTA
TTTGAAAAACACTACATGGGAGGATGTAGGACTGTGGACCCATCACTTACGAAAAACCAGGACTATCGG
ACAAAACCTTTCTGCTGCAGCGCTGTCCATTTTCTCAAATTTCTCTGCCTACAAAAGTCATTTC
GCAATGTCCATAGTGAAGACTTTGAAAAATAGGATTCTCCTTAATTGCCCTACTGTACCTCAATGCAGA
CAAAAAGACTTTGGAAACACACATTAATAATTTTCATGCTCCGAACGCCAGCGCACCAAGTAGCAGCCTC
AGCACTTTCAAAGATAAAAACAAAAATGATGGCCTTAAACCTAAGCAGGCTGACAGTGTAGAGCAAGCTG
TTTATTACTGTAAGAAGTGCACCTTACCGAGATCCTCTTTATGAAATAGTTAGGAAGCACATTTACAGGGA
ACATTTTCAGCATGTGGCAGCACCTTACATAGCAAAGGCAGGAGAAAAATCACTCAATGGGGCAGTCCCC
TTAGGCTCGAATGCCCGAGAAGAGAGTAGTATTCACTGCAAGCGATGCCTTTTCATGCCAAAGTCCATG
AAGCTTTGGTACAGCATGTCATCGAAGACCATGAACGTATAGGCTATCAGGCTACTGCCATGATTGGGCA
CACAAATGTAGTGGTCCCGATCCAAACCTTGATGCTAATTGCTCCAAACCTCAAGACAAGAAGAGC
ATGGGACTCCCAAGGATCGTTCCCTTGCTTCTGGAATGTCCGGTCTTTACCATCACAGCAGATGG
TGAATCGACTCTCAATACCAAAGCCTAACTTAAATTTACAGGAGTCAACATGATGTCCAGTGTTCATCT
GCAGCAGAACAACATATGGAGTCAAACTGTAGGCCAGGTTACAGTGTGGTCAATGAGACTGGGT
CTAGGTGGCAACGCACCAGTTTCCATTCCTCAACAATCTCAGTCTGTAAGCAGTTACTTCCAAGTGAA
ACGGAAGTCTTATGGGCTTGGGTGAGCAGAGGTTCCAGGCACCAGCAAGATACTCCCTGCAGTCTGC
TAATGCCTCTTCTCTCATCGGCCAGTTAAAGTCTCCTTCCCTCTCAGTACAGGCATCCAGAGTG
TTAGGTGAGTCCAGTTCCAAACCTGCTGCAGTGCACAGGCCCTCCCCAGGTAACACTTCTCAACTC
AAAAGTGAAAAATGTACAATCTGTAATGAGCTTTTCTGAAAATGTCTATAGTGTGCACTTCGAAAA
AGAACATAAAGCTGAGAAAGTCCAGCAGTAGCCAACCTACATTATGAAAATACACAATTTTACTAGCAA



[View online »](#)

TGCCTCTACTGTAATCGCTATTTACCCACAGATACTCTGCTCAACCATATGTTAATTCATGGTCTGTCTT
 GTCCATATTGCCGTTCAACTTTCAATGATGTGGAAAAGATGGCCGCACACATGCGGATGGTTCACATTGA
 TGAAGAGATGGGACCTAAACAGATTCTACTTTGAGTTTTGATTTGACATTGCAGCAGGGTAGTCACACT
 AACATCCATCTCCTGGTAACTACATAACAATCTGAGGGATGCCCCAGCTGAATCTGTTGCTTACCATGCC
 AAAATAATCCTCCAGTTCCTCCAAGCCACAGCCAAAGGTTTCAGGAAAAGGCAGATATCCCTGTA AAAAG
 TTCACCTCAAGCTGCAGTGCCCTATAAAAAAGATGTTGGGAAAACCCCTTGTCTCTTTGCTTTTCAATC
 CTA AAAAGACCCATATCTGATGCACCTGCACATCACTTACGAGAGAGGCCACCAAGTTATTCAGACGGTTC
 ATCCAGTTGAGAAAAAGCTCACCTACAAATGTATCCATTGCCTTGGTGTGTATACCAGCAACATGACCCG
 CTCAACTATCACTCTGCATCTAGTTCAGTGCAGGGGCGTTGAAAAGACCCAAAATGGCCAGGATAAGACA
 AATGCACCCTCTCGGCTTAATCAGTCTCCAAGTCTGGCACCTGTGAAGCGCACTTACGAGCAAATGGAAT
 TTCCCTTACTGAAAAACGAAAGTTAGATGATGATAGTATTACCCAGCTTCTTTGAGAGAAGCCTGA
 AGAGCCTGTTGTTTTAGCTTTAGACCCCAAGGGTCATGAAGATGATTCTATGAAGCCAGGAAAAGCTTT
 CTAACAAAGTATTTCAACAAACAGCCCTATCCACCAGGAGAGAAATTGAGAAGCTAGCAGCCAGTTTAT
 GGTATGGAAGAGTGACATCGCTTCCATTTTAGTAACAAAAGGAAGAAGTGTGCTCGTGATTGTGAAAA
 GTACAAGCCTGGCGTGTGCTGGGGTTAACATGAAAGAATTAATAAAGTCAAGCATGAGATGGATTTT
 GATGCTGAGTGGCTATTTGAAAATCATGATGAGAAGGATTCCAGAGTCAATGCTAGTAAGACTGCTGACA
 AAAAGCTCAACCTTGGGAAGGAAGATGACAGTTCCTCAGACAGTTTTGAAAATTTGGAAGAAGAAATCCAA
 TGAAGTGGTAGCCCTTTTGACCCTGTTTTGAAAGTTGAACCTAAAATCTCTAACGATAACCCAGAGGAA
 CATGACTGAAGGTAATTCCTGAGGATGCTTCAGAATCTGAGGAGAAGCTAGACCAAAAAGAGGATGGTT
 CAAAATACGAAATTCATTTGACTGAGGAACCAACCAAACTAATGCACAATGCATCTGATAGTGAGGT
 TGACCAAGACGATGTTGTTGAGTGGAAGACGGTGCTTCTCCATCTGAGAGTGGGCTGGATCCCAACAA
 GTGTCAGACTTTGAGGACAATACCTGCGAAATGAAACCAGGAACCTGGTCTGACGAGTCTCCCAAGCCG
 AAGATGCAAGGAGCAGTAAGCCAGCTGCCAAAAAAAAGGCTACCATGCAAGGTGACAGAGCAGTTGAA
 ATGGAAGAATAGTTCCTATGAAAAAGTTGAAGGTTTTGGTCTAAGGACCAGTCACAGTGGGAAGAATGCA
 TCTGAGAATGATGAGCGTTATCTAACCCAGATTGAGTGGCAGAATAGCACAATTGACAGTGAGGATG
 GGAACAGTTTGACAACATGACTGATGGAGTAGCTGAGCCATGCATGGCAGCTTAGCCGGAGTTAACT
 GAGCAGCCAACAGGCC

ACGCGTACGCGGCCGCTCGAGCAGAAACTCATCTCAGAAGAGGATCTGGCAGCAATGATATCCTGGATT
 ACAAGGATGACGACGATAAGGTTTAA

Protein Sequence:

>RC216456 representing NM_181442
 Red=Cloning site Green=Tags(s)

MFQLPVNNLGLSLRKARKTVKKILSDIGLEYCKEHIEDFKQFEPNDFYLNKNTTWEDVGLWDPSTLTKNQDYR
 TKPFCCSACPFSSKFFSAYKSHFRNVHSEDFENRILLNCPYCTFNADKKTLETHIKIFHAPNASAPSSSL
 STFKDKNKNDGLKPKQADSVEQAVYYCKKCTYRDPLYEIVRKHIYREHFQHVAAPIYAKAGEKSLNGAVP
 LGSNAREESSIHCKRCLFMPKSYEALVQHVIEDHERIGYQVTAMIGHTNVVVPRSKPLMLIAPKQDKKS
 MGLPPRIGSLASGNVRSLSQMVNRLSIPKPNLNSTGVNMMSSVHLQQNNYGVKSVGGQYVGGQSMRLG
 LGGNAPVSIQQSQSVKQLLPSGNRSYGLGSEQRSQAPARYSLQSANASSLSSGQLKSPSLSQSQASRV
 LGQSSSKPAAAATGPPPNTSSTQKWKICTICNELFPENYVSVHFEKEHKAEKVPAVANYIMKIHNFSTK
 CLYCNRYLPTDLLNHMLIHGLSCPYCRSTFNDVEKMAAHMRMVHIDEEMGPKTDSTLSFDLTLQGSHT
 NIHLLVTTYNLRDAPAESVAYHAQNPPVPPKQPKVQEKADIPVKSSPQAAPVYKQKDVGKTLCPFCFSI
 LKGPISDALAHLRERHQVIQTVHPVEKKLTYKCIHCLGVYTSNMTASTITLHLVHCRGVGKTQNGQDKT
 NAPSRLNQSPSLAPVKRTYEQMEFPLKKRKLDDSDSPSFFEEKPEEPVVLALDPKGHEDDSYEARKSF
 LTKYFNKQPYPTREIEKLAASLWLKSDIASHF SNKRKKCVRDCEKYKPGVLLGFNMKELNKVKHEMDF
 DAEWLFENHDEKDSRVNASKTADKLNKEDDSSSDSFENLEESNESGSPFDPVFEVEPKISNDNPEE
 HVLKVIPEDASEEEKLDQKEDGSKYETIHLTEEPTKLMHNASDSEVDQDDVVEWKDGASPESESGPSQ
 VSDFEDNTCEMKGPTWSESSQSEDARSSKPAAKKATMQGDREQLKWKNSSYGKVEGFWSKQSQWKNA
 SENDERLSNPQIEWQNSTIDSEdgeQFDNMTDGAEPMHGSLAGVKLSSQQA

TRTRPLEQKLISEEDLAANDILDYKDDDDKV

Chromatograms: https://cdn.origene.com/chromatograms/mk6263_a01.zip
Restriction Sites: SgfI-MluI
Cloning Scheme:



ACCN: NM_181442
ORF Size: 3306 bp

OTI Disclaimer: The molecular sequence of this clone aligns with the gene accession number as a point of reference only. However, individual transcript sequences of the same gene can differ through naturally occurring variations (e.g. polymorphisms), each with its own valid existence. This clone is substantially in agreement with the reference, but a complete review of all prevailing variants is recommended prior to use. [More info](#)

OTI Annotation: This clone was engineered to express the complete ORF with an expression tag. Expression varies depending on the nature of the gene.

Components: The ORF clone is ion-exchange column purified and shipped in a 2D barcoded Matrix tube containing 10ug of transfection-ready, dried plasmid DNA (reconstitute with 100 ul of water).

- Reconstitution Method:**
 1. Centrifuge at 5,000xg for 5min.
 2. Carefully open the tube and add 100ul of sterile water to dissolve the DNA.
 3. Close the tube and incubate for 10 minutes at room temperature.
 4. Briefly vortex the tube and then do a quick spin (less than 5000xg) to concentrate the liquid at the bottom.
 5. Store the suspended plasmid at -20°C. The DNA is stable for at least one year from date of shipping when stored at -20°C.

RefSeq: [NM_181442.4](#)
RefSeq Size: 4538 bp
RefSeq ORF: 3309 bp
Locus ID: 23394

UniProt ID: [Q9H2P0](#)

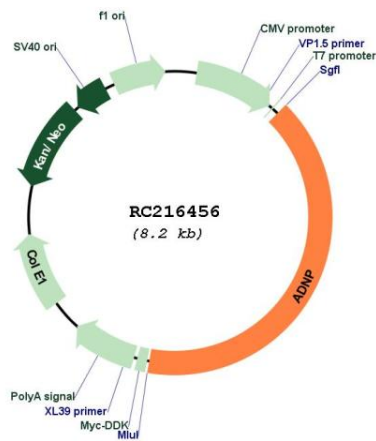
Cytogenetics: 20q13.13

Protein Families: Transcription Factors

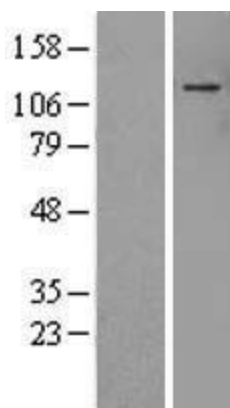
MW: 123.4 kDa

Gene Summary: Vasoactive intestinal peptide is a neuroprotective factor that has a stimulatory effect on the growth of some tumor cells and an inhibitory effect on others. This gene encodes a protein that is upregulated by vasoactive intestinal peptide and may be involved in its stimulatory effect on certain tumor cells. The encoded protein contains one homeobox and nine zinc finger domains, suggesting that it functions as a transcription factor. This gene is also upregulated in normal proliferative tissues. Finally, the encoded protein may increase the viability of certain cell types through modulation of p53 activity. Alternatively spliced transcript variants encoding the same protein have been described. [provided by RefSeq, Jul 2008]

Product images:



Circular map for RC216456



Western blot validation of overexpression lysate (Cat# [LY405758]) using anti-DDK antibody (Cat# [TA50011-100]). Left: Cell lysates from untransfected HEK293T cells; Right: Cell lysates from HEK293T cells transfected with RC216456 using transfection reagent MegaTran 2.0 (Cat# [TT210002]).