

## Product datasheet for RC216455L3

### SLITRK3 (NM\_014926) Human Tagged Lenti ORF Clone

#### Product data:

Product Type:	Expression Plasmids
Product Name:	SLITRK3 (NM_014926) Human Tagged Lenti ORF Clone
Tag:	Myc-DDK
Symbol:	SLITRK3
Mammalian Cell Selection:	Puromycin
Vector:	pLenti-C-Myc-DDK-P2A-Puro (PS100092)
E. coli Selection:	Chloramphenicol (34 ug/mL)
ORF Nucleotide Sequence:	The ORF insert of this clone is exactly the same as(RC216455).
Restriction Sites:	Sgfl-MluI
Cloning Scheme:	

Cloning sites used for ORF Shuttling:



\* The last codon before the Stop codon of the ORF.

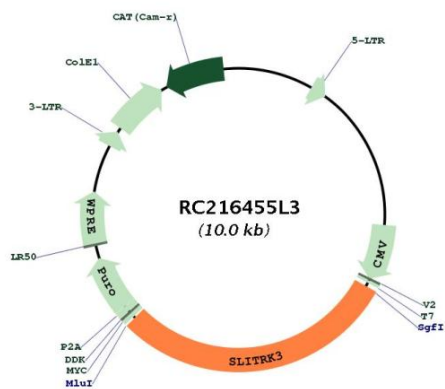
ACCN:	NM_014926
ORF Size:	2931 bp



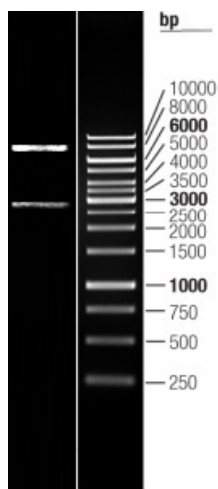
[View online »](#)

<b>OTI Disclaimer:</b>	The molecular sequence of this clone aligns with the gene accession number as a point of reference only. However, individual transcript sequences of the same gene can differ through naturally occurring variations (e.g. polymorphisms), each with its own valid existence. This clone is substantially in agreement with the reference, but a complete review of all prevailing variants is recommended prior to use. <a href="#">More info</a>
<b>OTI Annotation:</b>	This clone was engineered to express the complete ORF with an expression tag. Expression varies depending on the nature of the gene.
<b>Components:</b>	The ORF clone is ion-exchange column purified and shipped in a 2D barcoded Matrix tube containing 10ug of transfection-ready, dried plasmid DNA (reconstitute with 100 ul of water).
<b>Reconstitution Method:</b>	<ol style="list-style-type: none"><li>1. Centrifuge at 5,000xg for 5min.</li><li>2. Carefully open the tube and add 100ul of sterile water to dissolve the DNA.</li><li>3. Close the tube and incubate for 10 minutes at room temperature.</li><li>4. Briefly vortex the tube and then do a quick spin (less than 5000xg) to concentrate the liquid at the bottom.</li><li>5. Store the suspended plasmid at -20°C. The DNA is stable for at least one year from date of shipping when stored at -20°C.</li></ol>
<b>RefSeq:</b>	<a href="#">NM_014926.2</a>
<b>RefSeq Size:</b>	4281 bp
<b>RefSeq ORF:</b>	2934 bp
<b>Locus ID:</b>	22865
<b>UniProt ID:</b>	<a href="#">O94933</a>
<b>Cytogenetics:</b>	3q26.1
<b>Domains:</b>	LRRCT, LRR, LRR_TYP
<b>Protein Families:</b>	Transmembrane
<b>MW:</b>	108.9 kDa
<b>Gene Summary:</b>	This gene encodes a member of the Slitrk family of structurally related transmembrane proteins that are involved in controlling neurite outgrowth. The encoded protein contains two leucine-rich repeat (LRR) domains and a C-terminal domain that is partially similar to Trk neurotrophin receptor protein. Enhanced expression of this gene was found in tissue from several different types of tumors. Alternative splicing results in multiple transcript variants, all encoding the same protein. [provided by RefSeq, Jan 2016]

Product images:



Circular map for RC216455L3



Double digestion of RC216455L3 using SgfI and MluI