

## Product datasheet for RC216448

### Phospholipase C gamma 1 (PLCG1) (NM\_002660) Human Tagged ORF Clone

#### Product data:

Product Type:	Expression Plasmids
Product Name:	Phospholipase C gamma 1 (PLCG1) (NM_002660) Human Tagged ORF Clone
Tag:	Myc-DDK
Symbol:	Phospholipase C gamma 1
Synonyms:	NCKAP3; PLC-II; PLC1; PLC148; PLCgamma1
Mammalian Cell Selection:	Neomycin
Vector:	pCMV6-Entry (PS100001)
E. coli Selection:	Kanamycin (25 ug/mL)
ORF Nucleotide Sequence:	>RC216448 representing NM_002660 Red=Cloning site Blue=ORF Green=Tags(s)

TTTTGTAATACGACTCACTATAGGGCGGCCGGAATTCGTCGACTGGATCCGGTACCGAGGAGATCTGCC  
GCCCGATCGCC

ATGGCGGGCGCCGCTCCCTTGCGCCAACGGCTGCGGGCCCGCGGCCCTCGGACGCCGAGGTGCTGC  
ACCTCTGCCGAGCCTCGAGGTGGGCACCGTCATGACTTTGTTCTACTCCAAGAAGTCGACGCGACCCGA  
GCGGAAGACCTCCAGGTCAAGCTGGAGACGCCAGATCACGTGGAGCCGGGGCCGACAAGATCGAG  
GGGGCCATTGACATTCGTGAAATTAAGGAGATCCGCCAGGAAGACCTCACGGGACTTTGATCGTATC  
AAGAGGACCCAGCTTCCGGCCGACCAGTCACATTGCTTTGTCATTCTCTATGGAATGGAATTTGCTC  
GAAAACGCTGAGCCTGCAAGCCACATCTGAGGATGAAGTGAACATGTGGATCAAGGGCTTAACCTGGCTG  
ATGGAGGATACATTGCAGGCACCCACACCCTGCAGATTGAGAGGTGGCTCCGGAAGCAGTTTTACTCAG  
TGGATCGGAATCGTGAGGATCGTATATCAGCCAAGGACCTGAAGAACATGCTGTCCAGGTCAACTACCG  
GGTCCCCAACATGCGCTTCTCCGAGAGCGGCTGACGGACCTGGAGCAGCGCAGCGGGGACATCACCTAC  
GGCAGTTTGCTCAGCTGTACCGCAGCCTCATGTACAGCGCCAGAAGACGATGGACCTCCCCTTCTTG  
AAGCCAGTACTCTGAGGGCTGGGAGCGGCCGAGCTTTGCCAGTGTCCCTTCTGAGTCCAGCAGTT  
CCTTCTTGACTACCAGGGGAGCTGTGGCTGTGATCGCCTCCAGGTGCAGGAGTTCATGCTCAGCTTC  
CTCCGAGACCCCTTACGAGAGATCGAGGACCATACTTCTCTGGATGAGTTTGTCCACTTCTGTTC  
CCAAAGAGAACAGTGTGTGAACTCGCAGCTGGATGCAAGTATGCCCGACACCATGAACAACCCCTTTTC  
CCTACTGATCTCCTCCTCGCACAAACAGTACCTGACCGGGGACCAGTTCTCCAGTGAGTCTCCTTG  
GAAGCCTATGCTCGTGCCTGCGGATGGGCTGTCGCTGCATTGAGTTGGACTGCTGGGACGGCCGGATG  
GGATGCCAGTTATTTACCATGGGCACACCCTTACCACCAAGATCAAGTTCTCAGATGTCCTGCACACCAT  
CAAGGAGCATGCCTTTGTGGCTCAGAGTACCCAGTCATCCTGTCCATTGAGGACCACTGCAGCATTGCC  
CAGCAGAGAAACATGGCCAATACTTCAAGAAGGTGCTGGGGACACACTCCTACCAAGCCCGTGGAGA  
TCTCTGCCGACGGCTCCCCTACCCAACCAGCTTAAGAGGAAGATCCTCATCAAGCACAAGAAGCTGGC  
TGAGGGCAGTGCCTACGAGGAGGTGCCTACATCCATGATGTACTCTGAGAACGACATCAGCAACTCTATC



[View online »](#)

AAGAATGGCATCCTCTACCTGGAGGACCCTGTGAACCACGAATGGTATCCCCACTACTTTGTTCTGACCA  
GCAGCAAGATCTACTACTCTGAGGAGACCAGCAGTGACCAGGGCAACGAGGATGAGGAGGAGCCCAAGGA  
GGTCAGCAGCAGCACAGAGCTGCACTCCAATGAGAAGTGGTTCCATGGGAAGCTAGGGGCAGGGCGTGAC  
GGGCGTCACATCGCTGAGCGCCTGCTTACTGAGTACTGCATCGAGACCGGAGCCCTGACGGCTCCTTCC  
TCGTGCGAGAGAGTGAGACCTTCGTGGGCGACTACACGCTCTCTTCTGGCGGAACGGGAAAAGTCCAGCA  
CTGCCGTGTCCACTCCCAGCAAGATGCTGGGACCCCAAGTCTCTTGTGACAGACAACCTCGTCTTTGAC  
TCCCTCTATGACCTCATCAGCCTACCAGCAGGTGCCCTGCGCTGTAATGAGTTTGAGATGCGACTTT  
CAGAGCCTGTCCCACAGACCAACGCCCCACGAGAGCAAAGAGTGGTACCACGCGAGCCTGACCAGAGCACA  
GGCTGAGCACATGCTAATGCGCGTCCCTCGTGATGGGGCCTTCTGGTGCGGAAGCGGAATGAACCAAC  
TCATATGCCATCTCTTTCCGGGTGAGGGCAAGATCAAGCATTGCCGTGTCCAGCAAGAGGGCCAGACAG  
TGATGCTAGGGAACCTCGGAGTTCGACAGCCTTGTGACCTCATCAGTACTATGAGAAACACCCGTATA  
CCGCAAGATGAAGCTGCGCTATCCCATCAACGAGGAGGCACTGGAGAAGATTGGCACAGCTGAGCCTGAC  
TACGGGGCCCTGTATGAGGGACGCAACCCTGGCTTCTATGTAGAGGCAAACCTATGCCAACTTTCAAGT  
GTGCACTCAAAGCCCTTTGACTACAAGGCCAGAGGGAGGACGAGCTGACCTTACCAAGAGCGCCAT  
CATCCAGAATGTGGAGAAGCAAGAGGGAGGCTGGTGGCGAGGGGACTACGGAGGGAAGAAGCAGCTGTGG  
TTCCCATCAAACCTACGTGGAAGAGATGGTCAACCCCGTGGCCCTGGAGCCGGAGGGGAGCACTTGACG  
AGAACAGCCCCCTAGGGGACTTGCTGCGGGGGTCTTGGATGTGCCGGCTTGTGAGATTGCCATCCGTCC  
TGAGGGCAAGAACAACCGGCTCTTCGTCTTCTCCATCAGCATGGCGTCCGTGGCCACTGGTCCCTGGAT  
GTTGCTGCCGACTCACAGGAGGAGCTGCAGGACTGGGTGAAAAAGATCCGTGAAGTGGCCAGACAGCAG  
ACGCCAGGCTCACTGAAGGGAAGATAATGGAACGGAGGAAGAAGATTGCCTGGAGCTCTCTGAACTTGT  
CGTCTACTGCCGGCTGTCCCTTTGATGAAGAGAAGATTGGCACAGAACGTGCTTGCTACCGGGACATG  
TCATCCTTCCCGAAACCAAGGCTGAGAAATACGTGAACAAGGCCAAAGGCAAGAAGTTCCTTCACTACA  
ATCGACTGCAGCTCTCCCGCATCTACCCCAAGGGCCAGCGACTGGATTCCCTCAACTACGATCCTTTGCC  
CATGTGGATCTGTGGCAGTCAGCTTGTGGCCCTCAACTTCCAGACCCCTGACAAGCCTATGCAGATGAAC  
CAGGCCCTCTTATGACGGGCAGGCACTGTGGCTACGTGCTGCAGCCAAGCACCATGCGGGATGAGGCCT  
TCGACCCCTTTGACAAGAGCAGCCTCCGCGGGCTGGAGCCATGTGCCATCTCTATTGAGGTGCTGGGGC  
CCGACATCTGCCAAGAATGGCCGAGGCATTGTGTGCTTTTGTGGAGATTGAGGTGGCTGGAGCTGAG  
TATGACAGCACCAGCAGAAGACAGAGTTTGTGGTGGACAATGGACTCAACCCTGTATGGCCAGCCAAGC  
CCTTCCACTTCCAGATCAGTAACCCTGAATTTGCCTTTCTGCGCTTCGTGGTGTATGAGGAAGACATGTT  
TAGTGACCAGAATTTCTGGCTCAGGCTACTTTCCAGTAAAAGGCCTGAAGACAGGATACAGAGCAGTG  
CCTTTGAAGAACAACACAGTGAGGACCTGGAGTTGGCCTCCCTGCTGATCAAGATTGACATTTTCCCTG  
CCAAGCAGGAGAATGGTGACCTCAGTCCCTTCAAGTGGTACGTCCCTGCGGGAGCGGGGCTCAGATGCCTC  
AGGCCAGCTGTTTCATGGCCGAGCCCGGAAGGCTCCTTTGAATCCCGCTACCAGCAGCCGTTTGGAGAC  
TTCCGATCTCCAGGAGCATCTCGCAGACATTTTACAGTTCGAGAACGAAGGGCCCAAGAAGGACTC  
GGTCAATGGAGACAACCCCTC

ACGCGTACGCGGGCCGCTCGAGCAGAACTCATCTCAGAAGAGGATCTGGCAGCAATGATATCCTGGATT  
ACAAGGATGACGACGATAAGGTTTAA

**Protein Sequence:** >RC216448 representing NM\_002660  
 Red=Cloning site Green=Tags(s)

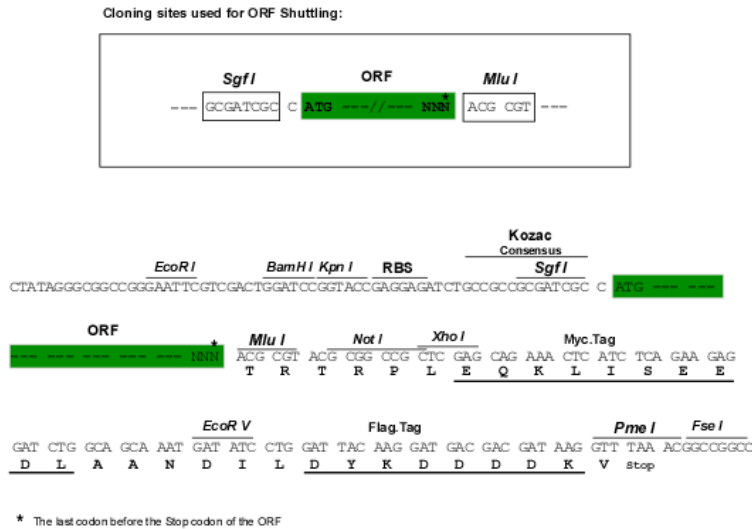
```
MAGAASPCANGCGPGAPSDAEVLHLCRSLEVGTVMTLFYSKKSQRPERKTFQVKLETRQITWSRGADKIE
GAIIDIREIKEIRPGKTSRDFDRYQEDPAFRPDQSHCFVILYGMFRLKTLQATSEDEVNMWIKGLTWL
MEDTLQAPTPLQIERWLRKQFYSDNRNEDRISAKDLKNMLSQVNYRVPNMRFRLRERLTDLEQRSGDITY
GQFAQLYRSLMYSAQKTMDFLEASTLRAGERPELCRVSLPEFQQFLLDYQGELWAVDRQLVQDFMFLSF
LRDPLREIEEYPFFLDEFVTFLLFSKENSVWNSQLDAVCPDTMNNPLSHYWISSSHNTYLTGDQFSSSSL
EAYARCLRMGCRCIELDLDCWDGPDGMPVIYHGHTLTTKIKFSDVLHTIKEHAFVASEYVILSIEDHCSIA
QQRNMAQYFKKVLGDTLLTKPVEISADGLPSPNQLKRLIKHKKLAEGSAYEEVPTSMYSENDISNSI
KNGILYLEDPVNHWEYPHYFVL TSSKIYYSEETSSDQNEDEEPEKVSSTELHSNEKWFHGLGAGRD
GRHIAERLLTEYCIETGAPDGSFLVRESETFVGDYTL SFWRNGKVQHCVRVSRQDAGTPKFFLTDNLVFD
SLYDLITHYQQVPLRCNEFEMRLSEVPQTNAHESKEWYHASLTRAQAEHMLMRVPRDGAFLVRKRNEPN
SYAISFRAEGKIKHCRVQEQGVMLGNSEFDSLVDLISYYEKHPLYRKMMLRYPINEEAEKIGTAEPD
YGALYEGRNPGFYVEANPMPTFKCAVKALFDYKAQREDEL TFKSAIQNVEKQEGGWWRDYGKKQLW
FPSNYVEEMVNPVALEPEREHLDENSPDGLLRGVLDPACQIAIRPEGKNNRLFVFSISMASVAHWSLD
VAADSQEELQDWYKKIREVAQTADARL TEGKIMERRKKIALELSELVVYCRPVFDEEKIGTERACYRDM
SSFPEKAEKYVNKAKGKFLQYNRLQLSRIYPKGQRLDSSNYDPLPMWICGSQVALNFQTPDKPMQMN
QALFMTGRHCGYVLQPSTMRDEAFDPDKSSLRGLEPCAISIEVLGARHLPKNGRIVCPFVEIEVAGAE
YDSTKQKTEFVVDNGLNPVWPAKPFHFQISNPEFAFLRFVVEEDMFSQNFQAQATFPVKGLKTGYRAV
PLKNNYSEDL ELASLLIKIDIFPAKQENGDLSPFSGTSLRERGSASGQLFHGRAREGSFESRYQQPFED
FRISQEHLADHFDSRERRAPRRTRVNGDNRL
```

TRTRPLEQKLISEEDLAANDILDYKDDDDKV

**Chromatograms:** [https://cdn.origene.com/chromatograms/mg2533\\_d03.zip](https://cdn.origene.com/chromatograms/mg2533_d03.zip)

**Restriction Sites:** SgfI-MluI

**Cloning Scheme:**



**ACCN:** NM\_002660

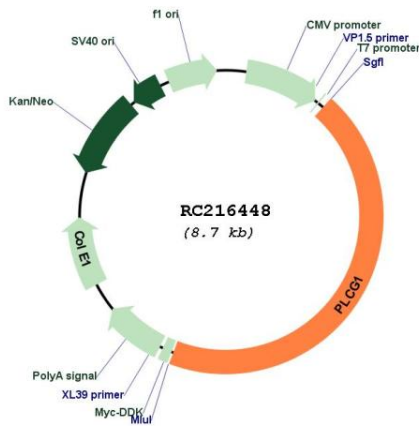
**ORF Size:** 3873 bp

<b>OTI Disclaimer:</b>	The molecular sequence of this clone aligns with the gene accession number as a point of reference only. However, individual transcript sequences of the same gene can differ through naturally occurring variations (e.g. polymorphisms), each with its own valid existence. This clone is substantially in agreement with the reference, but a complete review of all prevailing variants is recommended prior to use. <a href="#">More info</a>
<b>OTI Annotation:</b>	This clone was engineered to express the complete ORF with an expression tag. Expression varies depending on the nature of the gene.
<b>Components:</b>	The ORF clone is ion-exchange column purified and shipped in a 2D barcoded Matrix tube containing 10ug of transfection-ready, dried plasmid DNA (reconstitute with 100 ul of water).
<b>Reconstitution Method:</b>	<ol style="list-style-type: none"> <li>1. Centrifuge at 5,000xg for 5min.</li> <li>2. Carefully open the tube and add 100ul of sterile water to dissolve the DNA.</li> <li>3. Close the tube and incubate for 10 minutes at room temperature.</li> <li>4. Briefly vortex the tube and then do a quick spin (less than 5000xg) to concentrate the liquid at the bottom.</li> <li>5. Store the suspended plasmid at -20°C. The DNA is stable for at least one year from date of shipping when stored at -20°C.</li> </ol>
<b>Note:</b>	Plasmids are not sterile. For experiments where strict sterility is required, filtration with 0.22um filter is required.
<b>RefSeq:</b>	<a href="#">NM_002660.3</a>
<b>RefSeq Size:</b>	5205 bp
<b>RefSeq ORF:</b>	3876 bp
<b>Locus ID:</b>	5335
<b>UniProt ID:</b>	<a href="#">P19174</a>
<b>Cytogenetics:</b>	20q12
<b>Domains:</b>	C2, PI-PLC-X, SH2, SH3, PI-PLC-Y, PH
<b>Protein Families:</b>	Druggable Genome
<b>Protein Pathways:</b>	Calcium signaling pathway, Epithelial cell signaling in Helicobacter pylori infection, ErbB signaling pathway, Fc epsilon RI signaling pathway, Fc gamma R-mediated phagocytosis, Glioma, Inositol phosphate metabolism, Leukocyte transendothelial migration, Metabolic pathways, Natural killer cell mediated cytotoxicity, Neurotrophin signaling pathway, Non-small cell lung cancer, Pathways in cancer, Phosphatidylinositol signaling system, T cell receptor signaling pathway, VEGF signaling pathway, Vibrio cholerae infection
<b>MW:</b>	148.5 kDa

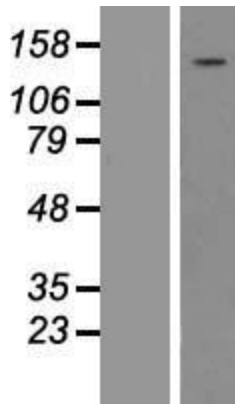
**Gene Summary:**

The protein encoded by this gene catalyzes the formation of inositol 1,4,5-trisphosphate and diacylglycerol from phosphatidylinositol 4,5-bisphosphate. This reaction uses calcium as a cofactor and plays an important role in the intracellular transduction of receptor-mediated tyrosine kinase activators. For example, when activated by SRC, the encoded protein causes the Ras guanine nucleotide exchange factor RasGRP1 to translocate to the Golgi, where it activates Ras. Also, this protein has been shown to be a major substrate for heparin-binding growth factor 1 (acidic fibroblast growth factor)-activated tyrosine kinase. Two transcript variants encoding different isoforms have been found for this gene. [provided by RefSeq, Jul 2008]

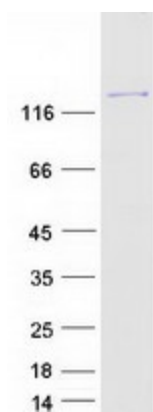
**Product images:**



Circular map for RC216448



Western blot validation of overexpression lysate (Cat# [LY419181]) using anti-DDK antibody (Cat# [TA50011-100]). Left: Cell lysates from untransfected HEK293T cells; Right: Cell lysates from HEK293T cells transfected with RC216448 using transfection reagent MegaTran 2.0 (Cat# [TT210002]).



Coomassie blue staining of purified PLCG1 protein (Cat# [TP316448]). The protein was produced from HEK293T cells transfected with PLCG1 cDNA clone (Cat# RC216448) using MegaTran 2.0 (Cat# [TT210002]).