

Product datasheet for RC216446

RNF39 (NM_170769) Human Tagged ORF Clone

Product data:

Product Type: Expression Plasmids
Product Name: RNF39 (NM_170769) Human Tagged ORF Clone
Tag: Myc-DDK
Symbol: RNF39
Synonyms: FAP216; HZF; HZFW; LIRF
Mammalian Cell Selection: Neomycin
Vector: pCMV6-Entry (PS100001)
E. coli Selection: Kanamycin (25 ug/mL)
ORF Nucleotide Sequence: >RC216446 representing NM_170769
 Red=Cloning site Blue=ORF Green=Tags(s)

TTTTGTAATACGACTCACTATAGGGCGGCCGGAATTCGTCGACTGGATCCGGTACCGAGGAGATCTGCC
 GCC**CGATCGCC**

ATGTGGTGGAGAGATTTGACGAGACTGAGACTCTGGTTGAAGAGAGAGGCAATCCAGGAGAGGGCGGA
 AAGCGGAAAAGTTAATGCGGGAGTCGGAGAGAAGGCCATCTACACAGCAAGCAGAGGGCGGCCCGCC
 ATCTGCGCGCTCGAAGCGGTACGGTGGTCGCGGAAGGGCGCGTCCAGATCCTGGCTTCCATGGAT
 GCGCCCGAGCTGGGCCCGGGCTGGTGGAGCGTCTGGAGCAGCTGGCGACGTGTCTCTGTGCGGGGGCT
 CCTTCGAGGACCCGGTGCTTCTGGCGTGGAGCACAGCTTCTGCCGCGCTGTCTGGCCCGCGCTGGGG
 GACTCCGCGCGGACCGGCACCGAGGCTTCCCCACCGCCTGTCCCTGCTGCGGCCGTGCCGTGTCCCGC
 CGCAGCCTGAGGTCTAATGTGCGGCTGGCGGTGGAGGTGCGAATCAGCCGCGAGCTGCGAGAGAAGCTGG
 CTGAGCCTGGGGCCCGTGGCGGGAGACGCCGAGGGGGGCGCATCCCCACCATGGGCTGCCTGGACCTGCC
 CGGAGAGGATATGAGGAAGACATGGAGACGATTTGAAGTCCCAACATCCAAGTCACTAATTCAGAGGAT
 GATCTCCCTGAAGATTATCCAGTGGTCAAAAAATGCTTCATAGACTGACAGCCGACCTGACCCCTGGACC
 CTGGGACCGCACACCGCCGCTGCTCATCTCCGCCGACCGCCGACGCGTACAACCTGGCCCCACAGGGAC
 GCCCGCGCCCCCTGACGGCCCCAAGCGCTTCGATCAGCTCCCAGCTGTGCTGGGTGGCAGGGCTTCGGG
 GCCGGCCGCCACTGCTGGGAGGTGGAGACTGCGGACCCGCTCCTGCAGAGACTTTCTGGGGAGGATG
 CGGACGACGAGGAGAGCCACTATGCAGTGGGCGCGCCGGGAATCAGTGCAACGCAAGGGCTGCGCGCC
 TGGCCCCCTGGGGAGCGCATCTCCCGCTGTTCTGCACCTGCGACCCTCGTGCTCCGCTCCGATTGTA
 CCAGCGGAAAGC

ACGCGTACGCGGCCGCTCGAGCAGAACTCATCTCAGAAGAGGATCTGGCAGCAATGATATCCTGGATT
 ACAAGGATGACGACGATAAGGTTAA



[View online »](#)

Protein Sequence: >RC216446 representing NM_170769
Red=Cloning site Green=Tags(s)

MWWRDLTRLRLWLKREAIPEGGRKAAKVNAGVGEKGIYTASSRGGPPSARSKAVTVVAEGAASRSWL SMD
 APELGPGLVERLEQLATCPLCGGSFEDPVLLACEHSFCRACLARRWGTPPATGTEASPTACPCGLPCPR
 RSLRSNVRLAVEVRISRELREKLAEPGARAGRRRGRIPTMGCLDLPGEDMRKTWRRFEVPTSKSSNSD
 DLPEDYPVVKMLHRLTADLTDPGTAHRRLLISADRRSVQLAPPGTPAPPDGPGRFDQLPAVLGAQGF
 AGRHCWEVETADAASCRDSSGEDADDEESHYAVGAAGESVQRKGCAPGLGERIFPLFCTCDPRAPLRIV
 PAES

TRTRPLEQKLISEEDLAANDILDYKDDDDKV

Chromatograms: https://cdn.origene.com/chromatograms/mk8054_e02.zip

Restriction Sites: SgfI-MluI

Cloning Scheme:



* The last codon before the Stop codon of the ORF

ACCN: NM_170769

ORF Size: 1062 bp

OTI Disclaimer: The molecular sequence of this clone aligns with the gene accession number as a point of reference only. However, individual transcript sequences of the same gene can differ through naturally occurring variations (e.g. polymorphisms), each with its own valid existence. This clone is substantially in agreement with the reference, but a complete review of all prevailing variants is recommended prior to use. [More info](#)

OTI Annotation: This clone was engineered to express the complete ORF with an expression tag. Expression varies depending on the nature of the gene.

Components: The ORF clone is ion-exchange column purified and shipped in a 2D barcoded Matrix tube containing 10ug of transfection-ready, dried plasmid DNA (reconstitute with 100 ul of water).

Reconstitution Method:

1. Centrifuge at 5,000xg for 5min.
2. Carefully open the tube and add 100ul of sterile water to dissolve the DNA.
3. Close the tube and incubate for 10 minutes at room temperature.
4. Briefly vortex the tube and then do a quick spin (less than 5000xg) to concentrate the liquid at the bottom.
5. Store the suspended plasmid at -20°C. The DNA is stable for at least one year from date of shipping when stored at -20°C.

RefSeq: [NM_170769.2](#), [NP_739575.2](#)

RefSeq Size: 1989 bp

RefSeq ORF: 861 bp

Locus ID: 80352

UniProt ID: [Q9H2S5](#)

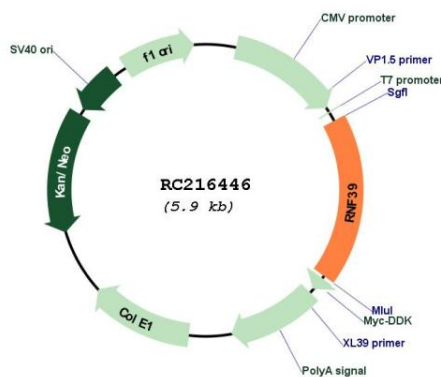
Cytogenetics: 6p22.1

Protein Families: Druggable Genome

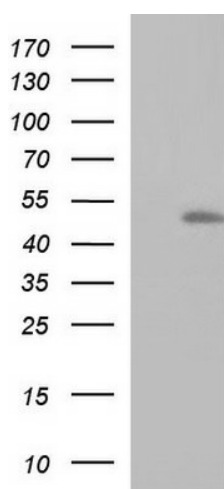
MW: 38 kDa

Gene Summary: This gene lies within the major histocompatibility complex class I region on chromosome 6. Studies of a similar rat protein suggest that this gene encodes a protein that plays a role in an early phase of synaptic plasticity. Multiple transcript variants encoding different isoforms have been found for this gene. [provided by RefSeq, Jul 2008]

Product images:



Circular map for RC216446



HEK293T cells were transfected with the pCMV6-ENTRY control (Cat# [PS100001], Left lane) or pCMV6-ENTRY RNF39 (Cat# RC216446, Right lane) cDNA for 48 hrs and lysed. Equivalent amounts of cell lysates (5 ug per lane) were separated by SDS-PAGE and immunoblotted with anti-RNF39(Cat# [TA590377]).