

## Product datasheet for RC216442

### FOXL1 (NM\_005250) Human Tagged ORF Clone

#### Product data:

Product Type:	Expression Plasmids
Product Name:	FOXL1 (NM_005250) Human Tagged ORF Clone
Tag:	Myc-DDK
Symbol:	FOXL1
Synonyms:	FKH6; FKHL11; FREAC7
Mammalian Cell Selection:	Neomycin
Vector:	pCMV6-Entry (PS100001)
E. coli Selection:	Kanamycin (25 ug/mL)
ORF Nucleotide Sequence:	>RC216442 representing NM_005250 Red=Cloning site Blue=ORF Green=Tags(s)

TTTTGTAATACGACTCACTATAGGGCGGCCGGAATTCGTCGACTGGATCCGGTACCGAGGAGATCTGCC  
GCC**CGATCGCC**

ATGAGTCACCTCTTCGATCCCCGGCTGCCTGCCCTGGCCGCTCGCCCATGCTGTATCTGTACGGTCCCG  
AGAGACCCGGCTCCCTCTGGCTTCGCCCGCGGGTCTAGCTGCCTCGGGCCGGCCGAGACCCC  
GCAGAAGCCTCCCTACAGCTACATCGCGCTCATCGCCATGGCGATCCAGGACGCGCCGAGCAGAGGGTC  
ACGCTCAACGGCATCTACCAGTTCATCATGGACCGCTTCCCTTCTACCACGACAACCGGACGGGTGGC  
AGAACAGCATCCGCCACAACCTCTCGCTCAACGACTGCTTCGTCAAGGTGCCCGGAGAAAGGGCGGCC  
GGCAAGGGCAGCTACTGGACGCTGGACCCCGCTGCCTGGACATGTTTGAGAACGGCAACTACCGGCGC  
CGGAAGAGGAAGCCCAAGCCGGGCCCGGGGCCCGGAGGCCAAGAGGCCCGCGCCGAGACGCACCAGC  
GCAGCGCGGAGGCGCAGCCGGAGGCGGGAGCGGGGCGAGGGGGCTCGGGCCCGCAATCTCCCGCTGCA  
GGCAGCGCCCGGGGCCCTCGCCCTCCTGGACGGCCCTCTCCGCGGCGCCCTCCACTGGCCGGGG  
ACCGGTCCCCGAACGAGGACGCTGGTACGCTGCCAGGGCGCAGCGGCGTGGCGGTGGCCAGGCAG  
CGCGCACAGGGGACGGCCGGGGTCCCCTGCGCCCCGCTCCCGCAGCTCTCCGAAGAGCTCCGACAA  
GTCCAAGAGCTTCAGCATAGACAGCATCTGGCGGAAAGCAGGGCCAGAAGCCGCTTCAGGGGACGAA  
CTCCTAGGGGTGCCAAGCCTGGCCCGGCGCGCTGGGTGCCTCGCTCCTGGCCGCTCCTCCAGCC  
TCCGTCGCTTTCAACGCTTCCCTGATGCTCGACCCGCATGTCCAGGGCGGCTTTACCAGCTCGGGAT  
CCCTTCTCTTATTTCCCCTGCAGGTTCCCGACACGGTACTCCACTTCCAG

**ACGCGT**ACGCGGCCGCTCGAGCAGAAACTCATCTCAGAAGAGGATCTGGCAGCAATGATATCCTGGATT  
ACAAGGATGACGACGATAAGGTTTAA



[View online »](#)

**Protein Sequence:** >RC216442 representing NM\_005250  
Red=Cloning site Green=Tags(s)

MSHLFDPRLPALAASPMLYL YGPERPGLPLAFAPAAALAASGRAETPQKPPYSYIALIAMAIQDAPEQRV  
 TLNGIYQFIMDRFPFYHDNRQGWQNSIRHNL SLNDCFVKVPREKGRPGKGSYWTLDPRCLDMFENGNYRR  
 RKRKPKPGGPAEAKRPRAETHQRSAEAQPEAGSGAGGSGPAISRLQAAPAGPSPLLDGSPSPAPLHWPG  
 TASPNEADAGDAAQGA AVAVGQAARTGDGPGSPLRPASRSPKSSDKSKSFIDSILAGKQGKPPSGDE  
 LLGGAKPGPGGRLGASLLAASSSLRPPFNASMLMDPHVQGGFYQLGIPFLSYFPLQVPDVTLHFQ

TRTRPLEQKLISEEDLAANDILDYKDDDDDKV

**Chromatograms:** [https://cdn.origene.com/chromatograms/mg3843\\_d01.zip](https://cdn.origene.com/chromatograms/mg3843_d01.zip)

**Restriction Sites:** SgfI-MluI

**Cloning Scheme:**

Cloning sites used for ORF Shuttling:



\* The last codon before the Stop codon of the ORF

**ACCN:** NM\_005250

**ORF Size:** 1035 bp

**OTI Disclaimer:** The molecular sequence of this clone aligns with the gene accession number as a point of reference only. However, individual transcript sequences of the same gene can differ through naturally occurring variations (e.g. polymorphisms), each with its own valid existence. This clone is substantially in agreement with the reference, but a complete review of all prevailing variants is recommended prior to use. [More info](#)

**OTI Annotation:** This clone was engineered to express the complete ORF with an expression tag. Expression varies depending on the nature of the gene.

**Components:** The ORF clone is ion-exchange column purified and shipped in a 2D barcoded Matrix tube containing 10ug of transfection-ready, dried plasmid DNA (reconstitute with 100 ul of water).

**Reconstitution Method:**

1. Centrifuge at 5,000xg for 5min.
2. Carefully open the tube and add 100ul of sterile water to dissolve the DNA.
3. Close the tube and incubate for 10 minutes at room temperature.
4. Briefly vortex the tube and then do a quick spin (less than 5000xg) to concentrate the liquid at the bottom.
5. Store the suspended plasmid at -20°C. The DNA is stable for at least one year from date of shipping when stored at -20°C.

**RefSeq:** [NM\\_005250.3](#)

**RefSeq Size:** 1038 bp

**RefSeq ORF:** 1038 bp

**Locus ID:** 2300

**UniProt ID:** [Q12952](#)

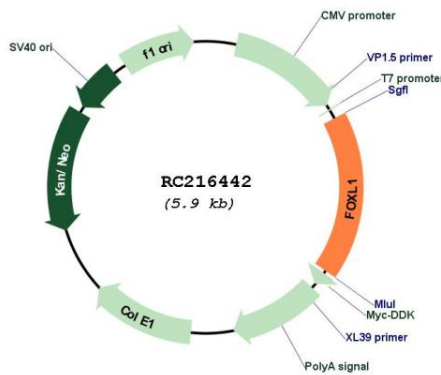
**Cytogenetics:** 16q24.1

**Protein Families:** Transcription Factors

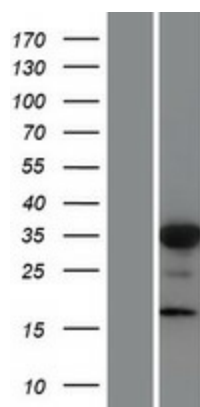
**MW:** 36.3 kDa

**Gene Summary:** This gene encodes a member of the forkhead/winged helix-box (FOX) family of transcription factors. FOX transcription factors are characterized by a distinct DNA-binding forkhead domain and play critical roles in the regulation of multiple processes including metabolism, cell proliferation and gene expression during ontogenesis. [provided by RefSeq, Nov 2012]

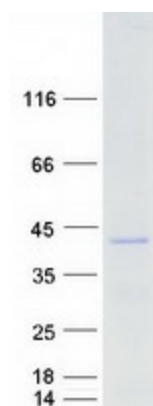
### Product images:



Circular map for RC216442



Western blot validation of overexpression lysate (Cat# [LY417423]) using anti-DDK antibody (Cat# [TA50011-100]). Left: Cell lysates from untransfected HEK293T cells; Right: Cell lysates from HEK293T cells transfected with RC216442 using transfection reagent MegaTran 2.0 (Cat# [TT210002]).



Coomassie blue staining of purified FOXL1 protein (Cat# [TP316442]). The protein was produced from HEK293T cells transfected with FOXL1 cDNA clone (Cat# RC216442) using MegaTran 2.0 (Cat# [TT210002]).