

## Product datasheet for **RC216436**

### TDIF2 (DNTTIP2) (NM\_014597) Human Tagged ORF Clone

#### Product data:

Product Type:	Expression Plasmids
Product Name:	TDIF2 (DNTTIP2) (NM_014597) Human Tagged ORF Clone
Tag:	Myc-DDK
Symbol:	TDIF2
Synonyms:	ERBP; FCF2; HSU15552; LPTS-RP2; Tdif2
Mammalian Cell Selection:	Neomycin
Vector:	pCMV6-Entry (PS100001)
E. coli Selection:	Kanamycin (25 ug/mL)



[View online »](#)

**ORF Nucleotide  
Sequence:**

>RC216436 ORF sequence  
 Red=Cloning site Blue=ORF Green=Tags(s)

TTTTGTAATACGACTCACTATAGGGCGGCCGGGAATTCGTCGACTGGATCCGGTACCGAGGAGATCTGCC  
 GCC**CGGATCGCC**

ATGGTGGTTACCAGATCTGCACGGGCTAAGGCCAGCATCCAAGCCGCGTCGGCTGAAAGTCCGGGCAAA  
 AGAGTTTTGCTGCTAATGGGATTC AAGCGCATCCAGAAAGTAGTACTGGATCTGATGCCCGAACTACTGC  
 TGAATCACAGACCACTGGGAAGCAAAGTTTAATCCCTAGAACTCTAAAGCTAGAAAAGGAAGAGCAGA  
 ACTACAGGCTCACTACCAAAGGGGACTGAACCATCTACGGATGGAGAGACCTCTGAGGCAGAGTCAAATT  
 ATTCTGTGTCTGAGCACCATGATACCATTTTAAGGGTAACTAGGAGAAGGCAGATCTTAATTGCATGCTC  
 CCCAGTGTCCAGTGTAGGAAAAAGCCGAAAGTAACTCCAACAAAGGAGTCTTACACTGAAGAAATAGTG  
 TCTGAAGCAGAATCTCATGTTTCAGGTATTTCTAGAATTGTGCTTCCACAGAAAAAACTACAGGAGCCA  
 GAAGAAGTAAGGCTAAATCTCTGACAGATCCAAGCCAAGAATCTCATAACAGAGCTATATCTGATGCTGA  
 GACATCAAGCTCAGACATTTCTTCTCTGGAATTGCAACTAGAAGAACCAGGAGTATGCAGAGGAAATTA  
 AAGGCACAAACTGAAAAGAAAGATAGTAAGATTGTACCAGGAAATGAGAAACAGATCGTGGGTACACCTG  
 TGAATTCAGAGGATTCAGATACCAGACAAACTCCCATTTACAAGCAAGATCTCTTTCTGAGATAAATAA  
 GCCAAATTTCTATAATAATGACTTTGATGATGATTTCTCCACAGAAAGTTCAGAAAATATATTAACAGTG  
 CACGAACAGGCCAATGTTGAATCTCTTAAAGAAACAAAACAGAAATGTAAGGATTTGGATGAAGATGCCA  
 ATGGAATAACAGATGATGGGAAAGAAATTAATGAGAAAAGTTCCTCAGCTGAAGAACTTTTCTGAACCTCA  
 GGACACTAGCCTTCAACAGTTAGTTTCTCAGAGACATTCACCCCCAAAATAAAAATGCTGTATCAGTG  
 CACTCTAATCTGAACCTGAGGCTGTAATGAAATCATTAACTCAAACATTTGCAACTGTGGAAGTAGGCA  
 GATGGAATAACAACAAAAGAGCCCATAAAAGCAAGTGACTTGACAAAGTTTGGTGATTGTGGTGGTAG  
 TGATGATGAAGAAGAGTCCACAGTTATAAGTGTGTCAGTGAAGACATGAACAGTGAAGGGAATGTAGATTTT  
 GAATGTGATACCAAATATAACAGTCTGCGCCCAACACATCTCAGGGTAAAGATAAATCTGTCTTACTAG  
 TTCTCAGCAGTGTGAAAGCCAACAGTCTGAAAACAGTGAGAATGAAGAGGATACTTTATGTTTTTGTGA  
 AAATAGTGGCCAAAGGGAGTCATTAAGTGGAGACACAGGAAGTCTGTCATGTGACAATGCATTGTTTGTGA  
 ATTGACACAACCTCTGGAATGAGTGTGATAAAAAATTTTACTTGGAGAGGAAGACAAGGCAAGTGAAG  
 TTGCCATTGAGGAAGAAAAGAAAGGAAGAGGATGAAAAAGTGAAGAAGATTCATCAGACCATGACGA  
 AAATGAAGATGAGTTTAGTGATGAAGAAGACTTCTAAATAGCACAAAGGCTAAACTTCTGAAGTTGACA  
 AGCAGCAGCATAGACCCTGGTCTGAGTATCAAGCAGTTGGTGGTTTGTATTAATTTCAATGCAGATA  
 AACTACAGTCTAACAAGAGAACCCTAACACAGATCAAGGAGAAAAAGAAAATGAGCTTCTGCAGAAAGC  
 CGTCATTACACCTGATTTTGAAAAAAACCCTGTGTTCCACCATATAGTGAATCAAAGTATCAACTTCAG  
 AAAAAACGCAGAAAAGAACGACAAAAAACAGCAGGGGATGGCTGGTTTGGTATGAAAAGCTCCAGAAATGA  
 CAAATGAACTGAAAAATGATCTCAAAGCACTGAAGATGAGAGCCAGCATGGACCCGAAAAGATTTTACAA  
 GAAAAATGATAGAGATGGCTTCCCAAGTACTTCCAGATTGGAACCATTGTTGACAATCCAGCTGATTTT  
 TACCATTACGAATCCCAAGAAGCAAAGGAAAAGAACTATTGTGGAAGAAGTCTGGCTGATTCTGAAT  
 TCAGAAGATAACAACCGAAGGAAGTACTCAGAGATCATGGCTGAAAAGCAGCAAAATGCAGCAGGAAAAAA  
 GTTCCGAAAGAAGAAGAAATTTTCGAAT

**ACGCGT**ACGCGGCCGCTCGAGCAGAAACTCATCTCAGAAGAGGATCTGGCAGCAATGATATCCTGGATT  
 ACAAGGATGACGACGATAAGGTTTAA

**Protein Sequence:** >RC216436 protein sequence  
Red=Cloning site Green=Tags(s)

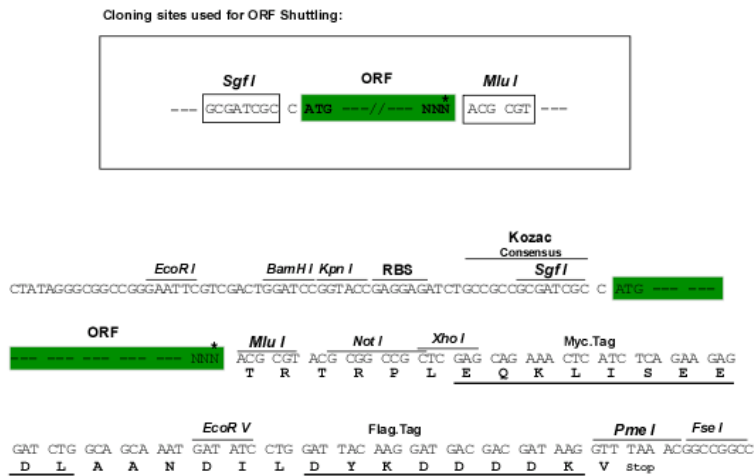
```
MVVTRSARAKASIQAASAESSGQKSFAANGIQAHPESSSTGSDARTTAESQTTGKQSLIPRTPKARKRKS
R TTGSLPKGTEPSTDGETSEAESNYSVSEHHTILRVTRRRQIL IACSPVSSVRKKPKVPTKESYTEEIV
SEAESHVSGISRIVLPTEKTTGARRSKAKSL TDPSQESHTAISAETSSSDISFSGIATRTRSMQRKL
KAQTEKKDSKIVPGNEKQIVGTPVNSESDSTRQTSHLQARSLSEINKPNFYNNDFDDDFSHRSENILTV
HEQANVESLKETKQNKDLDEDANGITDDGKEINEKSSQLKNLSELQDTSLQQLVSRHSTPQNKNAVSV
HSNLNSEAVMKSLTQTFATVEVGRWNNNKSPIKASDLTKFGDCGGSDDEEESTVIVSSEDMNSEGNVDF
ECDTKLYTSAPNTSQGKDNSVLLVLSDESQQSENEEDTLCFVENSGQRESLSGDTGSLSCDNALFV
IDTTPGMSADKNFYLEEDKASEVAIEEKEEEDKSEEDSSDHENEDEF SDEEDFLNSTKAKLLKLT
SSSIDPGLSIKQLGGLYINFNADKLQSNKRTLQIKEKKKNELLQKAVITPDFEKNHCVPYSESKYQLQ
KKRRKERQKTAGDGFWMKAPMTNELKNDLKALKMRASMDPKRFYKKNDRDGFPKYFQIGTIVDNPADF
YHSRIPKKQRKRTIVEELLADSEFRYRNRKYSEIMAEKAANAAGKKFRKKKKFRN
```

TRTRPLEQKLISEEDLAANDILDYKDDDDKV

**Chromatograms:** [https://cdn.origene.com/chromatograms/mk6716\\_d07.zip](https://cdn.origene.com/chromatograms/mk6716_d07.zip)

**Restriction Sites:** Sgfl-MluI

**Cloning Scheme:**



\* The last codon before the Stop codon of the ORF

**ACCN:** NM\_014597

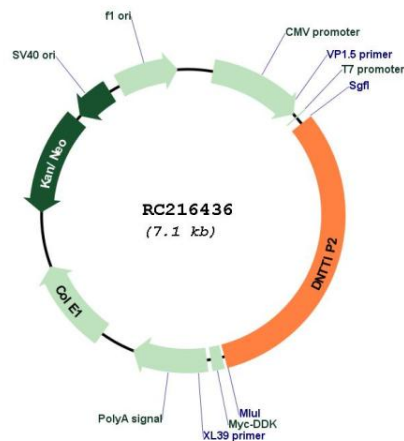
**ORF Size:** 2268 bp

**OTI Disclaimer:** The molecular sequence of this clone aligns with the gene accession number as a point of reference only. However, individual transcript sequences of the same gene can differ through naturally occurring variations (e.g. polymorphisms), each with its own valid existence. This clone is substantially in agreement with the reference, but a complete review of all prevailing variants is recommended prior to use. [More info](#)

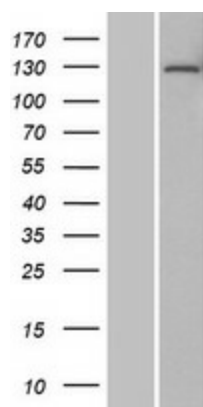
**OTI Annotation:** This clone was engineered to express the complete ORF with an expression tag. Expression varies depending on the nature of the gene.

<b>Components:</b>	The ORF clone is ion-exchange column purified and shipped in a 2D barcoded Matrix tube containing 10ug of transfection-ready, dried plasmid DNA (reconstitute with 100 ul of water).
<b>Reconstitution Method:</b>	<ol style="list-style-type: none"> <li>1. Centrifuge at 5,000xg for 5min.</li> <li>2. Carefully open the tube and add 100ul of sterile water to dissolve the DNA.</li> <li>3. Close the tube and incubate for 10 minutes at room temperature.</li> <li>4. Briefly vortex the tube and then do a quick spin (less than 5000xg) to concentrate the liquid at the bottom.</li> <li>5. Store the suspended plasmid at -20°C. The DNA is stable for at least one year from date of shipping when stored at -20°C.</li> </ol>
<b>RefSeq:</b>	<u><a href="#">NM_014597.5</a></u>
<b>RefSeq Size:</b>	2725 bp
<b>RefSeq ORF:</b>	2271 bp
<b>Locus ID:</b>	30836
<b>UniProt ID:</b>	<u><a href="#">Q5QJE6</a></u>
<b>Cytogenetics:</b>	1p22.1
<b>Protein Families:</b>	Druggable Genome
<b>MW:</b>	84.5 kDa
<b>Gene Summary:</b>	This gene is thought to be involved in chromatin remodeling and gene transcription. The encoded nuclear protein binds to and enhances the transcriptional activity of the estrogen receptor alpha, and also interacts with terminal deoxynucleotidyltransferase. The expression profile of this gene is a potential biomarker for chronic obstructive pulmonary disease. [provided by RefSeq, Dec 2010]

**Product images:**



Circular map for RC216436



Western blot validation of overexpression lysate (Cat# [LY415177]) using anti-DDK antibody (Cat# [TA50011-100]). Left: Cell lysates from untransfected HEK293T cells; Right: Cell lysates from HEK293T cells transfected with RC216436 using transfection reagent MegaTran 2.0 (Cat# [TT210002]).