

Product datasheet for RC216433

CYBC1 (NM_001100407) Human Tagged ORF Clone

Product data:

Product Type: Expression Plasmids
Product Name: CYBC1 (NM_001100407) Human Tagged ORF Clone
Tag: Myc-DDK
Symbol: CYBC1
Synonyms: C17orf62; CGD5; Eros
Mammalian Cell Selection: Neomycin
Vector: pCMV6-Entry (PS100001)
E. coli Selection: Kanamycin (25 ug/mL)
ORF Nucleotide Sequence: >RC216433 ORF sequence
 Red=Cloning site Blue=ORF Green=Tags(s)

TTTTGTAATACGACTCACTATAGGGCGCCGGGAATTCGTCGACTGGATCCGGTACCGAGGAGATCTGCC
GCCCGCATCGCC

ATGTACCTGCAGGTGGAGACCCGCACCAGCTCCCGCTCCATCTGAAGAGGGCTCCAGGCATCCGGTCTT
GGTCCCTGCTGGTTGGAATCTTGTGCGATTGGCTGGCTGCTGCCTACTACAGCGGAGATAGCCTGGGCTG
GAAGCTCTTCTACGTACAGGCTGCCTGTTTGTGGCTGTGCAGAAGCTGGAGGACTGGGAGGAAGCCATC
TTCGACAAGACACAGGAAGGTTGTTTGAAGACGTTTCAGCCTCTACAAGAAGCTGCTGACTCTTTTCA
GAGCTGGCCACGACCAGGTGGTGGTCTGCTCCATGATGTCCGTGATGTGAGCGTGGAGGAGGAGAAGGT
CCGGTACTTCGGGAAAGGCTACATGGTGGTGTCCGGCTTGCAGCGGGCTTCTCCACCCCTCACGCAG
AGTGACAGTCATGGGCCACCGCAGTGATGTGGAAGCCATCGCCAAGCTCATCACCAGCTTCTGGAGCTGC
ACTGCCTTGAGAGCCCCACAGAGCTGTCTCAGAGCAGCGACAGTGAGGCCGGTGACCCTGCAAGCCAGAG
C

ACGCGTACGCGGCCGCTCGAGCAGAACTCATCTCAGAAGAGGATCTGGCAGCAATGATATCCTGGATT
ACAAGGATGACGACGATAAGGTTTAA

Protein Sequence: >RC216433 protein sequence
 Red=Cloning site Green=Tags(s)

MYLQVETRTSSRLHLKRAPGIRSWLLVGILSIGLAAAYYSGDSLWKLFFVVTGCLFVAVQNLEDWEEAI
FDKSTGKVVLLKTFSLYKLLTLFRAGHDQVVLLHDVDRDVSVEEEKVRYFGKGYMVVLRATGFSHPLTQ
SAVMGHRSDVEIAKLI TSFLELHCLESPTELSQQSSDSEAGDPASQS

TRTRPLEQKLI SEEDLAANDILDYKDDDDKV

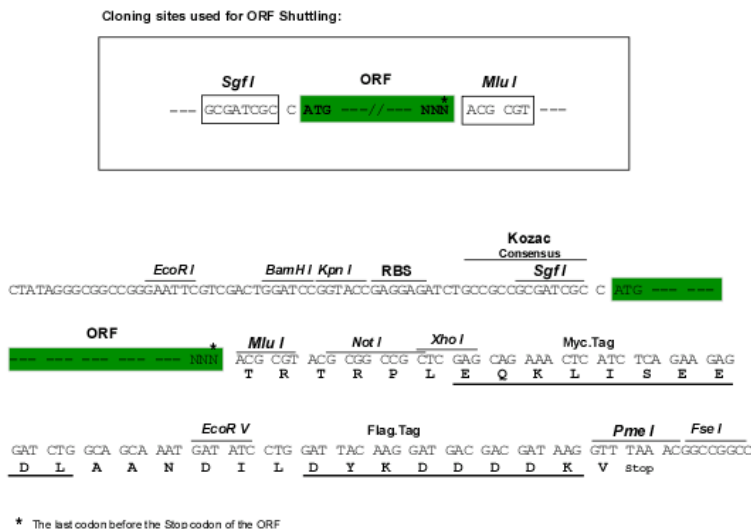


[View online »](#)

Chromatograms: https://cdn.origene.com/chromatograms/mk6408_d08.zip

Restriction Sites: SgfI-MluI

Cloning Scheme:



ACCN: NM_001100407

ORF Size: 561 bp

OTI Disclaimer: The molecular sequence of this clone aligns with the gene accession number as a point of reference only. However, individual transcript sequences of the same gene can differ through naturally occurring variations (e.g. polymorphisms), each with its own valid existence. This clone is substantially in agreement with the reference, but a complete review of all prevailing variants is recommended prior to use. [More info](#)

OTI Annotation: This clone was engineered to express the complete ORF with an expression tag. Expression varies depending on the nature of the gene.

Components: The ORF clone is ion-exchange column purified and shipped in a 2D barcoded Matrix tube containing 10ug of transfection-ready, dried plasmid DNA (reconstitute with 100 ul of water).

Reconstitution Method:

1. Centrifuge at 5,000xg for 5min.
2. Carefully open the tube and add 100ul of sterile water to dissolve the DNA.
3. Close the tube and incubate for 10 minutes at room temperature.
4. Briefly vortex the tube and then do a quick spin (less than 5000xg) to concentrate the liquid at the bottom.
5. Store the suspended plasmid at -20°C. The DNA is stable for at least one year from date of shipping when stored at -20°C.

RefSeq: [NM_001100407.3](#)

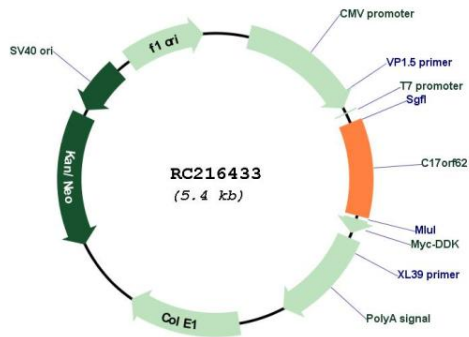
RefSeq Size: 2217 bp

RefSeq ORF: 564 bp

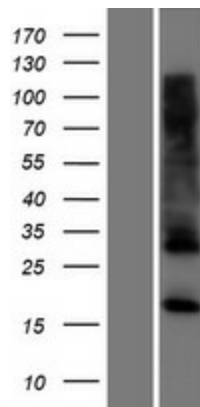
Locus ID: 79415

UniProt ID: [Q9BQA9](#)
Cytogenetics: 17q25.3
Protein Families: Transmembrane
MW: 20.8 kDa
Gene Summary: Necessary for a stable expression of the CYBA and CYBB subunits of the cytochrome b-245 heterodimer. Controls the phagocyte respiratory burst and is essential for innate immunity. [UniProtKB/Swiss-Prot Function]

Product images:



Circular map for RC216433



Western blot validation of overexpression lysate (Cat# [LY420251]) using anti-DDK antibody (Cat# [TA50011-100]). Left: Cell lysates from untransfected HEK293T cells; Right: Cell lysates from HEK293T cells transfected with RC216433 using transfection reagent MegaTran 2.0 (Cat# [TT210002]).