

Product datasheet for **RC216432**

CD32 (FCGR2C) (NM_201563) Human Tagged ORF Clone

Product data:

Product Type:	Expression Plasmids
Product Name:	CD32 (FCGR2C) (NM_201563) Human Tagged ORF Clone
Tag:	Myc-DDK
Symbol:	CD32
Synonyms:	CD32; CD32C; CDW32; FCG2; FCRIIC; IGFR2
Mammalian Cell Selection:	Neomycin
Vector:	pCMV6-Entry (PS100001)
E. coli Selection:	Kanamycin (25 ug/mL)
ORF Nucleotide Sequence:	>RC216432 representing NM_201563 Red=Cloning site Blue=ORF Green=Tags(s)

TTTTGTAATACGACTCACTATAGGGCGGCCGGAATTCGTCGACTGGATCCGGTACCGAGGAGATCTGCC
GCC**CGATCGCC**

ATGGGAATCCTGTCAATTTTACCTGTCCTTGCCACTGAGAGTACTGGGCTGACTGCAAGTCCCCCAGC
CTTGGGGTCATATGCTTCTGTGGACAGCTGTGCTATTCTGGCTCCTGTTGCTGGGACACCTGCAGCTCC
CCCAAAGGCTGTGCTGAAACTCGAGCCCCAGTGGATCAACGTGCTCCAGGAGGACTCTGTGACTTGACA
TGCCGGGGGACTCACAGCCCTGAGAGCGACTCCATTCAAGTGGTCCACAATGGGAATCTCATTCCCACCC
ACACGCAGCCCAGCTACAGGTTCAAGGCCAACAAATGACAGCGGGGAGTACACGTGCCAGACTGGCCA
GACCAGCCTCAGCGACCCTGTGCATCTGACTGTGCTTTCTGAGTGGCTGGTGTCCAGACCCTCACCTG
GAGTTCAGGAGGGAGAAACCATCGTGCTGAGGTGCCACAGCTGGAAGGACAAGCCTCTGGTCAAGGTCA
CATTCTCCAGAAATGAAAATCCAAGAAATTTCCCGTTCGGATCCCAACTTCTCCATCCCAAGCAAA
CCACAGTCACAGTGGTGATTACCACTGCACAGGAAACATAGGCTACACGCTGACTCATCCAAGCCTGTG
ACCATCACTGTCCAAGCTCCCAGCTCTTACCGATGGGGATCATTGTGGCTGTGGTCACTGGGATTGCTG
TAGCGGCCATTGTTGCTGCTGTAGTGGCCTTGTACTGCAGGAAAAAGCGGATTTAGCCAATCCAC
TGATCCTGTGAAGGCTGCCAAATTTGAGCCACCTGGACGTCAAATGATTGCCATCAGAAAGAGACAACT
GAAGAAACCAACAATGACTATGAAACAGCTGACGGCGGCTACATGACTCTGAACCCAGGGCACCTACTG
ACGATGATAAAAAATCTACCTGACTCTTCTCCCAACGACCATGTCAACAGTAATAAC

ACGCGTACGCGGCCGCTCGAGCAGAAACTCATCTCAGAAGAGGATCTGGCAGCAAATGATATCCTGGATT
ACAAGGATGACGACGATAAGGTTTAA



[View online »](#)

Protein Sequence: >RC216432 representing NM_201563
Red=Cloning site Green=Tags(s)

MGILSFLPVLATESDWADCKSPQPWGHMLLWTAVLFLAPVAGTPAAPPKAVLKLEPQWINVLQEDSVTLT
 CRGTHSPESDSIQWFHNGNLIPHTHTQPSYRFKANNNDSGEYTCQTGTSLSDPVHLTVLSEWLVLQTPHL
 EFQEGETIVLRCHSWKDKPLVKVTFVFQNGKSKKFSRSDPNFSIPQANHSHSGDYHCTGNIGYTLYSSKPV
 TITVQAPSSSPMGIIVAVVTGI AVAAI VAAVVALIYCRKKRISANSTDPV KAAQFEPGGRQMI AIRKRQP
 EETNNDYETADGGYMTLNPRAPTD DDKNIYLTLPNDHVNSNN

TRTRPLEQKLISEEDLAANDILDYKDDDDKV

Chromatograms: https://cdn.origene.com/chromatograms/mg3524_a08.zip

Restriction Sites: SgfI-MluI

Cloning Scheme:



ACCN: NM_201563

ORF Size: 969 bp

OTI Disclaimer: The molecular sequence of this clone aligns with the gene accession number as a point of reference only. However, individual transcript sequences of the same gene can differ through naturally occurring variations (e.g. polymorphisms), each with its own valid existence. This clone is substantially in agreement with the reference, but a complete review of all prevailing variants is recommended prior to use. [More info](#)

OTI Annotation: This clone was engineered to express the complete ORF with an expression tag. Expression varies depending on the nature of the gene.

Components: The ORF clone is ion-exchange column purified and shipped in a 2D barcoded Matrix tube containing 10ug of transfection-ready, dried plasmid DNA (reconstitute with 100 ul of water).

Reconstitution Method:

1. Centrifuge at 5,000xg for 5min.
2. Carefully open the tube and add 100ul of sterile water to dissolve the DNA.
3. Close the tube and incubate for 10 minutes at room temperature.
4. Briefly vortex the tube and then do a quick spin (less than 5000xg) to concentrate the liquid at the bottom.
5. Store the suspended plasmid at -20°C. The DNA is stable for at least one year from date of shipping when stored at -20°C.

RefSeq: [NM_201563.5](#)

RefSeq Size: 1005 bp

RefSeq ORF: 972 bp

Locus ID: 9103

UniProt ID: [P31995](#)

Cytogenetics: 1q23.3

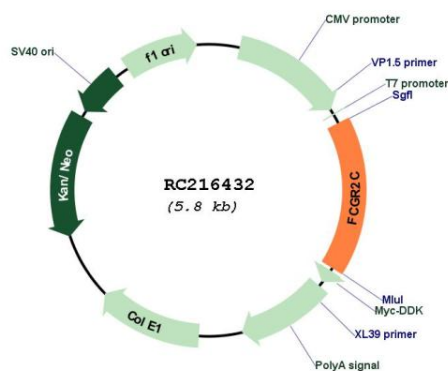
Protein Families: ES Cell Differentiation/IPS, Transmembrane

Protein Pathways: Fc gamma R-mediated phagocytosis, Systemic lupus erythematosus

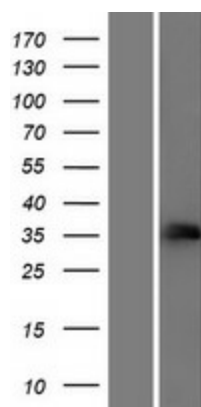
MW: 35.4 kDa

Gene Summary: This gene encodes one of three members of a family of low-affinity immunoglobulin gamma Fc receptors found on the surface of many immune response cells. The encoded protein is a transmembrane glycoprotein and may be involved in phagocytosis and clearing of immune complexes. An allelic polymorphism in this gene results in both coding and non-coding variants. [provided by RefSeq, Apr 2012]

Product images:



Circular map for RC216432



Western blot validation of overexpression lysate (Cat# [LY404462]) using anti-DDK antibody (Cat# [TA50011-100]). Left: Cell lysates from untransfected HEK293T cells; Right: Cell lysates from HEK293T cells transfected with RC216432 using transfection reagent MegaTran 2.0 (Cat# [TT210002]).