

Product datasheet for RC216426

OSCAR (NM_206818) Human Tagged ORF Clone

Product data:

Product Type:	Expression Plasmids
Product Name:	OSCAR (NM_206818) Human Tagged ORF Clone
Tag:	Myc-DDK
Symbol:	OSCAR
Synonyms:	PIgR-3; PIGR3
Mammalian Cell Selection:	Neomycin
Vector:	pCMV6-Entry (PS100001)
E. coli Selection:	Kanamycin (25 ug/mL)
ORF Nucleotide Sequence:	>RC216426 representing NM_206818 Red=Cloning site Blue=ORF Green=Tags(s)

TTTTGTAATACGACTCACTATAGGGCGGCCGGAATTCGTCGACTGGATCCGGTACCGAGGAGATCTGCC
GCC**CGATCGCC**

ATGGCCCTGGTGCTGATCCTCCAGCTGCTGACCCTCTGGCCTCTGTGTCACACAGACATCACTCCGCTCTG
TGGCCATTATAGTCCCCCAGCTTCATACCACCCTAAGCCATGGCTGGGAGCTCAGCCGGCTACAGTTGT
GACCCCTGGGGTCAACGTGACCTTGAGATGCCGGGCACCCCAACCCGCTTGGAGATTTGACTTTTCAAG
CCTGGAGAGATCGCTCCCTTCTCTCCGGGATGTGCTCCTCCGAGCTGGCAGAATTTCTTCTGGAGGAGG
TGACTCCAGCCCAAGGGGAAGTTACCGCTGCTGCTACCGAAGGCCAGACTGGGGCCGGGTGCTGGTC
CCAGCCCAGCGATGTCTGGAGCTGCTGGTGACAGAGGAGCTGCCGCGGCCGTCGCTGGTGGCGCTGCC
GGGCCGGTGGTGGTCTGGCGCAACGTGAGCCTGCGCTGCGCGGGCCGCTGCCGAACATGAGCTTCG
TGCTGTACCGCGAGGGCGTGGCGCCCCGCTGCAGTACCGCCACTCCGCGCAGCCCTGGGCCGACTTAC
GCTGCTGGGGCCCGCGCCCCGGCACCTACAGCTGCTACTATCACACGCCCTCCGCGCCCTACGTGCTG
TCGCAGCGCAGCGAGGTGCTGGTCATCAGCTGGGAAGGTGAGGGCCCTGAGGCCCGGCCGCTCCTCCG
CCCCAGGAATGCAGGCCCCAGGACCTCCGCCCTCAGACCCAGGAGCCAGGCCCCAGCCTCTCCTCCT
CAGACCCAGGGTCTAGTCTGCAGCCCCTCCTCCCTCAGACCCAGGATTCCTGGGACCCAGCCCCCTCT
CCCTCAGATCCAGGAGTC

ACGCGTACGCGGCCGCTCGAGCAGAACTCATCTCAGAAGAGGATCTGGCAGCAAATGATATCCTGGATT
ACAAGGATGACGACGATAAGGTTAA



[View online »](#)

Protein Sequence: >RC216426 representing NM_206818
Red=Cloning site Green=Tags(s)

MALVLIQLLTLWPLCHTDITPSVAIIVPPASYHHPKWLGAQPATVVTPGVNVTLCRAPQPAWRFGFLFK
 PGEIAPLLFRDVSELAEFFLEEVTQAQGSYRCCYRRPDWGPVWSQPSDVLELLVTEELPRPSLVALP
 GPVVGPGANVSLRCAGRLRNMSFVLYREGVAAPLQYRHSAPWADFTLLGARAPGTYSYHTPSAPYVL
 SQRSEVLVISWEGEGPEARPASSAPGMQAPGPPPSDPGAQAPSLSSFPRGLVLQPLLPQTQDSWDPAPP
 PSDPGV

TRTRPLEQKLISEEDLAANDILDYKDDDDKV

Chromatograms: https://cdn.origene.com/chromatograms/mg2834_a05.zip

Restriction Sites: SgfI-MluI

Cloning Scheme:



ACCN: NM_206818

ORF Size: 858 bp

OTI Disclaimer: The molecular sequence of this clone aligns with the gene accession number as a point of reference only. However, individual transcript sequences of the same gene can differ through naturally occurring variations (e.g. polymorphisms), each with its own valid existence. This clone is substantially in agreement with the reference, but a complete review of all prevailing variants is recommended prior to use. [More info](#)

OTI Annotation: This clone was engineered to express the complete ORF with an expression tag. Expression varies depending on the nature of the gene.

Components: The ORF clone is ion-exchange column purified and shipped in a 2D barcoded Matrix tube containing 10ug of transfection-ready, dried plasmid DNA (reconstitute with 100 ul of water).

Reconstitution Method:

1. Centrifuge at 5,000xg for 5min.
2. Carefully open the tube and add 100ul of sterile water to dissolve the DNA.
3. Close the tube and incubate for 10 minutes at room temperature.
4. Briefly vortex the tube and then do a quick spin (less than 5000xg) to concentrate the liquid at the bottom.
5. Store the suspended plasmid at -20°C. The DNA is stable for at least one year from date of shipping when stored at -20°C.

RefSeq: [NM_206818.2](#), [NP_996554.2](#)

RefSeq Size: 1946 bp

RefSeq ORF: 861 bp

Locus ID: 126014

UniProt ID: [Q8IYS5](#)

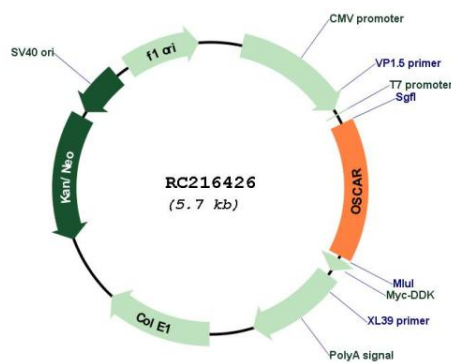
Cytogenetics: 19q13.42

Protein Families: Druggable Genome

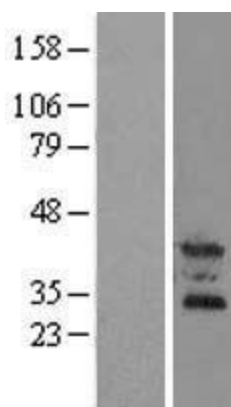
MW: 30.7 kDa

Gene Summary: Osteoclasts are multinucleated cells that resorb bone and are essential for bone homeostasis. This gene encodes an osteoclast-associated receptor (OSCAR), which is a member of the leukocyte receptor complex protein family that plays critical roles in the regulation of both innate and adaptive immune responses. The encoded protein may play a role in oxidative stress-mediated atherogenesis as well as monocyte adhesion. Multiple alternatively spliced transcript variants encoding different isoforms have been found for this gene. [provided by RefSeq, Aug 2013]

Product images:



Circular map for RC216426



Western blot validation of overexpression lysate (Cat# [LY404222]) using anti-DDK antibody (Cat# [TA50011-100]). Left: Cell lysates from untransfected HEK293T cells; Right: Cell lysates from HEK293T cells transfected with RC216426 using transfection reagent MegaTran 2.0 (Cat# [TT210002]).