

Product datasheet for **RC216424**

GABA A Receptor beta 2 (GABRB2) (NM_000813) Human Tagged ORF Clone

Product data:

Product Type:	Expression Plasmids
Product Name:	GABA A Receptor beta 2 (GABRB2) (NM_000813) Human Tagged ORF Clone
Tag:	Myc-DDK
Symbol:	GABA A Receptor beta 2
Synonyms:	DEE92; ICEE2
Mammalian Cell Selection:	Neomycin
Vector:	pCMV6-Entry (PS100001)
E. coli Selection:	Kanamycin (25 ug/mL)



[View online »](#)

ORF Nucleotide Sequence:

>RC216424 representing NM_000813
 Red=Cloning site Blue=ORF Green=Tags(s)

TTTTGTAATACGACTCACTATAGGGCGGCCGGAATTCGTCGACTGGATCCGGTACCGAGGAGATCTGCC
 GCC**CGCATCGCC**

ATGTGGAGAGTGGGAAAAGGGCTACTTTGGGATTTGGTCTTCCCCTTAATAATCGCCGCTGTCTGTG
 CGCAGAGTGTCAATGACCCTAGTAATATGTCGCTGGTTAAAGAGACGGTGGATAGACTCCTGAAAGGCTA
 TGACATTCGTCCTGAGACCAGATTTTGGAGTCCCCCGTGGCTGTGGGATGAACATTGACATTGCCAGC
 ATCGATATGGTTTCTGAAGTCAATATGGATTATACCTTGACAATGTACTTTCAACAAGCCTGGAGAGATA
 AGAGGCTGTCTATAATGTAATACCTTTAACTTGACTCTGGACAACAGAGTGGCAGACCAGCTCTGGGT
 GCCTGATACCTATTTCTGAACGATAAGAAGTCATTTGTGCACGGAGTACTGTTAAGAACCAGTATT
 CGCTGCATCCTGATGGCACCCTCTTTATGGACTCAGAATCACAAACACAGCTGCCTGCATGATGGACC
 TAAGGAGTACCCACTGGATGAACAAAAGTGCACCTTGGAAATTGAGAGCTATGGATACACAAGTATGA
 CATTGAGTTTTACTGGCTGGCGATGATAATGCAGTAACAGGAGTAACGAAAATTGAACTCCACAGTTC
 TCTATTGTAGATTACAACTTATACCAAGAAGTTGTTTTTCCACAGTTCTATCCCAGTTATCCC
 TCAGCTTTAAGCTTAAGAGAAACATTGGCTACTTTATCCTGCAAACATACATGCCTTCCATCCTGATTAC
 CATCCTCTCCTGGGTCTCCTTCTGGATTAATTACGATGCTTCAGCTGCAAGGGTGGCATTAGGAATCACA
 ACTGTCCTCACAATGACCACAATCAACACCCACCTCCGGGAAACTCTCCCTAAAAATCCCCTATGTGAAGG
 CCATTGACATGTACCTGATGGGGTGCTTTGTCTTCGTTTTTTCATGGCCCTTCTGGAATATGCCCTAGTCAA
 CTACATCTTCTTTGGGAGGGGGCCCCAACGCCAAAAGAAAGCAGCTGAGAAGGCTGCCAGTGCCAAACAT
 GAGAAGATGGCCCTGGATGTCAACAAGATGGACCCCATGAGAACATCTACTGAGCACTCTCGAGATAA
 AAAATGAAATGGCCACATCTGAGGCTGTGATGGGACTTGGAGACCCAGAACACATGCTAGCCTATGA
 TGCTCCAGCATCCAGTATCGGAAAGCTGGGTTGCCAGGCATAGTTTTGGCCGAAATGCTCTGGAACGA
 CATGTGGCGCAAAAGAAAAGTCGCTGAGGAGACGCGCCTCCCAACTGAAATACCATCCCTGACTTGA
 CTGATGTGAATGCCATAGATCGGTGGTCCCGCATATTCTCCAGTGGTTTTTCTTCTTCAACATCGT
 CTATTGGCTTTATTATGTGAAC

ACGCGTACGCGGCCGCTCGAGCAGAAACTCATCTCAGAAGAGGATCTGGCAGCAATGATATCCTGGATT
 ACAAGGATGACGACGATAAGGTTTAA

Protein Sequence:

>RC216424 representing NM_000813
 Red=Cloning site Green=Tags(s)

MWRVRKRGYFGIWSFPLIIAAVCAQSVNDPSNMSLVKETVDRLKGYDIRLRPFDGPPVAVGMNIDIAS
 IDMVSEVNMDYTLTMYFQQAWRDKRLSYNVIPLNLTLDNRVADQLWVPDITYFLNDKKSFFVHGVTVKNRMI
 RLHPDGTVLYGLRITTTAACMMDLRRYPLDEQNCTLEIESYGYTTDDIEFYWRGDDNAVTVTKIELPQF
 SIVDYKLITKKVVFSTGYPRLSLSFKLKRNIGYFILQTYMPSILITILSWVSWINYDASAARVALGIT
 TVLTMTTINTHLRETLPKIPYVKAIDMYLMGCFVFMALLEYALVNYIFFGRGPQRQKKAEEKAASANN
 EKMRLDVNMKDPHENILLSTLEIKNEMATSEAVMGLGDPSTMLAYDASSIQYRKAGLPRHSFGRNALER
 HVAQKSRRLRRASQLKITIPDLTDVNAIDRWSRIFFPVVSFFNIVYWLYYVN

TRTRPLEQKLISEEDLAANDILDYKDDDDKV

Chromatograms:

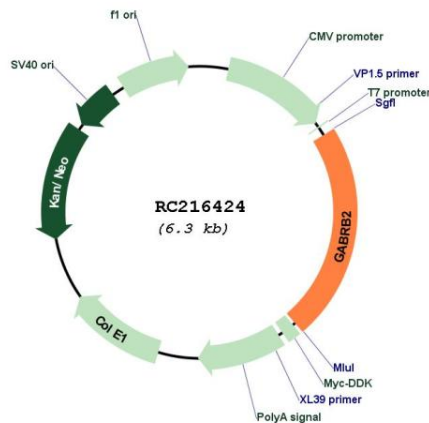
https://cdn.origene.com/chromatograms/mg2437_d02.zip

Restriction Sites:

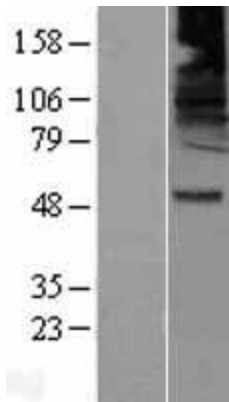
Sgfl-MluI

UniProt ID: [P47870](#)
Cytogenetics: 5q34
Domains: Neur_chan_memb, Neur_chan_LBD
Protein Families: Druggable Genome, Ion Channels: Cys-loop Receptors, Transmembrane
Protein Pathways: Neuroactive ligand-receptor interaction
MW: 54.4 kDa
Gene Summary: The gamma-aminobutyric acid (GABA) A receptor is a multisubunit chloride channel that mediates the fastest inhibitory synaptic transmission in the central nervous system. This gene encodes GABA A receptor, beta 2 subunit. It is mapped to chromosome 5q34 in a cluster comprised of genes encoding alpha 1 and gamma 2 subunits of the GABA A receptor. Alternative splicing of this gene generates 2 transcript variants, differing by a 114 bp insertion. [provided by RefSeq, Jul 2008]

Product images:



Circular map for RC216424



Western blot validation of overexpression lysate (Cat# [LY400287]) using anti-DDK antibody (Cat# [TA50011-100]). Left: Cell lysates from untransfected HEK293T cells; Right: Cell lysates from HEK293T cells transfected with RC216424 using transfection reagent MegaTran 2.0 (Cat# [TT210002]).