

Product datasheet for RC216422

PITPNM2 (NM_020845) Human Tagged ORF Clone

Product data:

Product Type:	Expression Plasmids
Product Name:	PITPNM2 (NM_020845) Human Tagged ORF Clone
Tag:	Myc-DDK
Symbol:	PITPNM2
Synonyms:	NIR-3; NIR3; RDGB2; RDGBA2
Mammalian Cell Selection:	Neomycin
Vector:	pCMV6-Entry (PS100001)
E. coli Selection:	Kanamycin (25 ug/mL)
ORF Nucleotide Sequence:	>RC216422 representing NM_020845 Red=Cloning site Blue=ORF Green=Tags(s)

TTTTGTAATACGACTCACTATAGGGCGGCCGGAATTCGTCGACTGGATCCGGTACCGAGGAGATCTGCC
GCC**CGATCGCC**

ATGATTATAAAGGAATATCGGATTCCTCTGCCAATGACCGTGGAGGAGTACCGCATCGCCCAGCTGTACA
TGATACAGAAGAAGAGCCGTAACGAGACATATGGCGAAGGCAGCGCGTGGAGATCCTGGAGAACCAGCC
GTACACAGATGGCCAGGCGGCTCTGGGCAGTACACACAAGGTGTATCATGTGGGCATGCACATTCCC
AGCTGGTTCGGCTCCATCCTGCCAAGGCAGCCCTGCGGGTGGTGGAGGAGTCTTGAATGCCTACCCCT
ACACCCGAACCAGGTTACCTGTCTTTCTGGAGAAATTCATCGACATTGAAACCTTTTATAAAAC
TGATGCTGGAGAAAACCCGACGTGTTCAACCTCTCTCCTGTGGAAAAGAACCAGCTGACAATCGACTTC
ATCGACATTGTCAAAGACCCTGTGCCCAACAGAGTATAAGACAGAAGAGGACCCCAAGCTGTTCCAGT
CAACCAAGACCCAGCGGGGGCCCTGTCCGAGAACTGGATCGAGGAGTACAAGAAGCAGGCTTCCCCAT
CATGTGCGCATACAAGCTCTGCAAGGTGGAGTTCGGCTACTGGGGCATGCAGTCCAAGATCGAGAGGTT
ATCCACGACACCGGACTACGGAGGGTGTGGTGGGGCTCACCAGGAGGCTGGTGGTGGCAGGACGAGT
GGTATGGGCTGAGCATGGAGAACATCCGGGAGCTGGAGAAGGAGGCACAGCTCATGCTTCCCGTAAGAT
GGCCAGTTCAATGAGGATGGTGGAGGCCACTGAGCTCGTCAAGCACGAAGCCGCTCGGACCCAGACC
TCTGGGAGCCCCGGAGCCAGCAGCAATGGGGAGCCCTAGTGGGGCGCGCCCTCAAGAAACAGT
GGTCCACATCCTCAAAGTCGTCTCGGTCTGCAAGCGGGGAGCGAGTCTTCCCGCCACAGCATCTCAGA
GTGGAGGATGCAGAGTATTGCCAGGACTCGGATGAGAGCTCAGATGATGAGTTCTTCGATGCGCAGGAG
GACCTGTCCGACACAGAGGAAATGTTCCCAAGGACATCACCAAGTGGAGCTCCAATGACCTCATGGACA
AGATCGAGAGCCAGAGCCGGAAGACACACAAGATGGTCTGTACCAGGAGGTCGCCCTGAGTTCAGGGT
GGCCTCCAGTGTGGAGCAGCTGAACATCATAGAGGACGAGGTTAGCCAGCCGCTGGCTGCACCGCCCTCC
AAGATCCACGTGCTGCTACTGGTGTGCACGGAGGCACCATCCTGGACACAGGCGCCGGGACCCAGCT
CCAAGAAGGGCGATGCTAACACCATCGCCAACGTGTTGCACACCGTTCATGCGCGTGCACCTACCCAGCGC
CCTGGGCCGCTTCCATCCGCTGGTGCCTGCCCGCCGCTGCTCTGACGCCTTTCCTGGTCTCC



[View online »](#)

AACCTCAGCCCCTACAGCCATGACGAAGGCTGTCTGTCCAGCAGTCAGGACCACATTCCCCTGGCTGCC
TCCCCCTGCTGGCCACCTCCTCCCCCAGTACCAGGAGGCAGTTGCCACAGTGATTACAGCGAGCCAACT
TGCCATATGGGGACTTCATCAAGTCCCAGGAGGGCATGACCTTCAATGGGCAGGTCTGCCTGATTGGGGAC
TGCGTCGGGGGCATCCTGGCATTGATGCCCTGTGCTACAGTAACCAGCCGGTGTCTGAGAGTCAGAGCA
GCAGCCCGGGGCGAGCGTGGTCAGCATGCAGGACAATGACCTGCTGTCCCCGGGCATCCTGATGAATGC
AGCACACTGCTGCGGTGGTGGCGGTGGCGGGTGGCGGTGGTGGCAGCAGTGGTGGTGGCAGTAGT
GGTGGTCCAGCCTGGAGAGCAGTCGGCACCTGAGCCGAAGCAAGTCGACATCCCCCGCAGCAACGGCA
CTGAGGACCCCAAAAGGCAACTGCCCCGCAAGAGGAGCGACTCATCCACCTACGAGCTGGATACCATCCA
GCAGCACCAGGCCTTCTGTCCAGCCTCCATGCCAGCGTGTGAGGACTGAGCCCTGCTCACGCCATTCC
AGCAGCTCCACCATGCTGGATGGCACAGGTGCCCTGGGCAGGTTTGACTTTGAGATCACCGACCTTTCC
TCTTCGGGTGCCCGTGGGGTGGTCTGGCCTTGAGGAAGACTGTCATCCAGCCCTGGATGTTTTCCA
GCTGCGGGCGGCCTGCCAGCAAGTCTACAACTTCCACCCGCGGACCCGTGAGTTCACGCCTGGAG
CCGCTGCTGGAACGGCGCTTTCACGCCCTGCCGCTTTCAGCGTCCCCGCTACCAACGCTACCCGCTGG
GGGATGGTGTCTCACGCTGCTGGCGGATGTGCTCCAGACCCACAATGCAGCCTTCCAAGAGCATGGCGC
CCCCTCCTCGCCGGGCACTGCCCTGCCAGTCGTGGCTTCGCGCCGAGCCAGTGAGATCAGCATCGCCAGC
CAGGTGTGAGGATGGCTGAGAGCTACACGGCATCCAGCATCGCCAGAAGGCCCCCGATGCGCTAGCC
ATACCCCGAGCGTCAGGCGTCTGTCCCTGCTCGCCCTGCCCGCCCCAGCCCCACCCCTGGCCCCCA
CCCTCCAGCCAGGAAGGCAAGCCCTGGCCTGGAGAGGGCCCTGGCCTCCCTGAGCTGGACATTGGAGAA
GTGCGTGCAAAGTGGTGGGGCCAGAAGCGGATCGACTACGCCCTGTACTGCCCTGACGCCCTCACGGCT
TCCCCACGGTGGCTCTGCCTCACCTTCCACGCCAGCTACTGGGAGTCAACAGACGTGGTCTCCTTTCT
GCTGAGACAGGTGATGAGGATGACAATCCAGCATCTTGAGCTGGATGGCAAGGAAGTGTGCGTGTTC
ACCCCTCAAAGCCAAGGAGAAGTGGCAGCGCAAGCGGACCCACGTGAAGCTGCCGAACGTGACGGCCA
ACCACCGGATCAATGATGCCCTTGCCAAATGAGGACGGCCCCAGGTTCTGACGGCAGGTTTCATGTATGG
GCCCCTGACATGGTACCCTGACTGGGAGAAGGTGGATGTGCACATCATGACCCAGCCGCCCTCAGGC
GAGTGGCTCTACCTGGATACGCTGGTGACCAACAACAGTGGGCGTGTCTCTACACCATCCCTGAGTCGC
ACCGCTGGGCGTGGGTGTCTACCCTATCAAGATGGTGGTTCAGGGGAGACCACACGTTTGCCGACAGCTA
CATCACCGTGTGCCAAGGGCACAGAGTTCGTGGTCTTCAGCATCGACGGTTCCTTTGCCGCTAGCGTG
TCCATCATGGGCAGCGACCCCAAGGTGCGGGCCGGGGCCGTGGACGTGGTGGGCACTGGCAGGACCTGG
GCTACCTCATCTACGTGACGGGCCGGCCGACATGCAGAAGCAGCGGGTGGTGGCGTGGCTGGCCCA
GCACAATCCCCATGGCGTGGTGTCTTCTGTGACGGCTGGTGCATGACCCGCTGCGGCACAAGGCC
AACTTCTGAAGCTGCTCATCTCCGAGCTGCACCTGCGCGTGCACGCGGCTATGGTCCACCAAGGACG
TGGCGGTGTACAGCGCCATTAGCCTGTCCCCATGCAGATCTACATCGTGGGCGGCCACCAAGAAGCT
GCAGCAGCAGTGCCAGTTCATCACGGATGGCTACGCGGCCACCTGGCGCAGCTGAAGTACAGCCACCGG
GCGCGGCCGCTCGAACACGGCCACCCGATGGCGCTGCGCAAGGGCAGCTTCGGCTGCCCGGCCAGG
GCGACTTCTGCGCTCCCGGAACCACCTGCTTCGACCATCTCGGCCAGCCAGCGGGCCAGCCACCG
GCACGAGCGGACACAGAGCCAGGCGGATGGCGAGCAGCGGGGCCAGCGCAGCATGAGTGTGGCGGCCG
TGCTGGGGCCGCGCATGACTGGCCGCTGGAGCCGGGGCAGCCGCGGGCCCAAG

ACGCGTACGCGGCCGCTCGAGCAGAACTCATCTCAGAAGAGGATCTGGCAGCAAATGATATCCTGGATT
ACAAGGATGACGACGATAAGGTTTAA

Protein Sequence: >RC216422 representing NM_020845
Red=Cloning site Green=Tags(s)

```

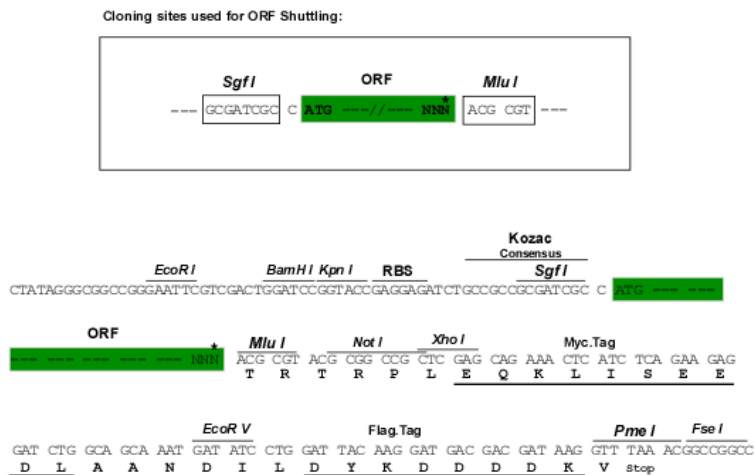
MIKEYRIPLPMTVEEYRIAQLYMIQKKSERNETYEGSGVEILENRPYTDGPGGSGQYTHKVYHVMHPI
SWFRSILPKAALRVVEESWNAYPYTRTRFTCPFVEKFSIDIETFYKTDAGENPDVFNLSPEKNQLTIDF
IDIVKDPVPHNEYKTEEDPKLFQSTKTQRGPLESENWIEEYKKQVFPIMCAYKLCCKVEFRYWMQSKIERF
IHDTGLRRVMVRAHRQAWCWQDEWYGLSMENIRELEKEAQLMLSRKMAQFNEDGEEATELVKHEAVSDQT
SGEPPEPSSSNGEPLVGRGLKKQWSTSSKSSRSKRKASPSRHSISEWRMQSIARSDSESSDDEFDAHE
DLSDTEEMFPKDIITKSSNDLMDKIESPEPEDTQDGLYRQGAPEFRVASSVEQLNIEDEVSQPLAAPP
KIHVLLLVLHGGTILDTGAGDPSSKKGDANTIANVFDTVMRVHYPALGRLAIRLVPCPPVCSDAFALVS
NLSPYSHDEGCLSSSQDHIPLAALPLLATSSPQYQEAATVIQRANLAYGDFIKSQEGMTFNGQVCLIGD
CVGGILAFDALCYSNPVSESSSSRRGSVSMQDNDLLSPGILMNAHCCGGGGGGGGGGSSGGGGSS
GGSSLESSRHLRSNVDIPRSNGTEDPKRQLPRKRSDSSTYELDTIQHQAFSSLHASVLRTEPCSRHS
SSSTMLDGTGALGRDFEITDLFLFGCPLGLVLALRKTVIPALDVFQLRPACQQVYNLPHADPSASRLE
PLLERRFHALPPFSVPRYQRYPLDGCSTLLADVLQTHNAAFQEHGAPSSPGTAPASRGFRRASEISIAS
QVSGMAESYTAASSIAQKAPDALSHTPSVRRLLSLLALPAPSPTTPGPHPPARKASPLERAPGLPELDIGE
VAAKWWGQKRIDYALYCPDALTAFTVALPHLFHASYWESTDVVSFLLRQVMRHDNSSIIELDGKEYSVF
TPSKPREKWQRKTRHVKLNRVNTANHRINDALANEDGPQVLTGRFMYGPLDMVTLTGKVKDVHIMTQPPSG
EWLYLDTLVTNNSGRVSYTIPESHRLGVGVYPIKMWVRGDHTFADSYITVLPKGTEFVVFSDIGSFAASV
SIMGSDPKVRAGAVDVRHWQDLGYLIIYVTGRPDMQKQVVAWLAQHNFPHGVVFCDGLVHDLRHKHA
NFLKLLISELHLRVHAAYGSTKDVAVYSAISLSPMQIYIVGRPTKKLQQCQFITDGYAAHLAQLKYSHR
ARPARNTATRMALRKGSFGLPGQDFLRSRNHLRTISAQPSGSHRHERTQSQADGEQRGQRMSVAAG
CWGRAMTGRLEPGAAAAGPK
    
```

TRTRPLEQKLISEEDLAANDILDYKDDDDKV

Chromatograms: https://cdn.origene.com/chromatograms/mk8017_b09.zip

Restriction Sites: SgfI-MluI

Cloning Scheme:



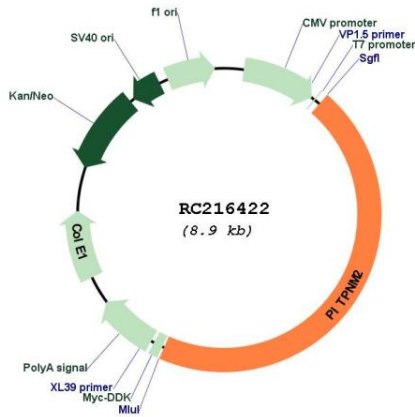
* The last codon before the Stop codon of the ORF

ACCN: NM_020845

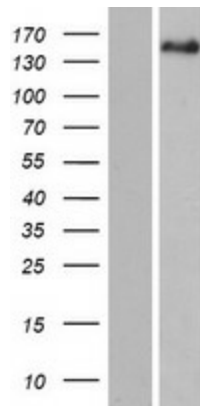
ORF Size: 4047 bp

OTI Disclaimer:	The molecular sequence of this clone aligns with the gene accession number as a point of reference only. However, individual transcript sequences of the same gene can differ through naturally occurring variations (e.g. polymorphisms), each with its own valid existence. This clone is substantially in agreement with the reference, but a complete review of all prevailing variants is recommended prior to use. More info
OTI Annotation:	This clone was engineered to express the complete ORF with an expression tag. Expression varies depending on the nature of the gene.
Components:	The ORF clone is ion-exchange column purified and shipped in a 2D barcoded Matrix tube containing 10ug of transfection-ready, dried plasmid DNA (reconstitute with 100 ul of water).
Reconstitution Method:	<ol style="list-style-type: none"> 1. Centrifuge at 5,000xg for 5min. 2. Carefully open the tube and add 100ul of sterile water to dissolve the DNA. 3. Close the tube and incubate for 10 minutes at room temperature. 4. Briefly vortex the tube and then do a quick spin (less than 5000xg) to concentrate the liquid at the bottom. 5. Store the suspended plasmid at -20°C. The DNA is stable for at least one year from date of shipping when stored at -20°C.
RefSeq:	NM_020845.2 , NP_065896.1
RefSeq Size:	6754 bp
RefSeq ORF:	4050 bp
Locus ID:	57605
UniProt ID:	Q9BZ72
Cytogenetics:	12q24.31
Protein Families:	Druggable Genome
MW:	148.8 kDa
Gene Summary:	PITPNM2 belongs to a family of membrane-associated phosphatidylinositol transfer domain-containing proteins that share homology with the Drosophila retinal degeneration B (rdgB) protein (Ocaka et al., 2005 [PubMed 15627748]).[supplied by OMIM, Mar 2008]

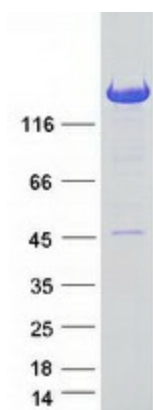
Product images:



Circular map for RC216422



Western blot validation of overexpression lysate (Cat# [LY412266]) using anti-DDK antibody (Cat# [TA50011-100]). Left: Cell lysates from untransfected HEK293T cells; Right: Cell lysates from HEK293T cells transfected with RC216422 using transfection reagent MegaTran 2.0 (Cat# [TT210002]).



Coomassie blue staining of purified PITPNM2 protein (Cat# [TP316422]). The protein was produced from HEK293T cells transfected with PITPNM2 cDNA clone (Cat# RC216422) using MegaTran 2.0 (Cat# [TT210002]).