

Product datasheet for **RC216396**

TBC1D3 (TBC1D3F) (NM_032258) Human Tagged ORF Clone

Product data:

Product Type:	Expression Plasmids
Product Name:	TBC1D3 (TBC1D3F) (NM_032258) Human Tagged ORF Clone
Tag:	Myc-DDK
Symbol:	TBC1D3
Synonyms:	TBC1D3; TBC1D3G
Mammalian Cell Selection:	Neomycin
Vector:	pCMV6-Entry (PS100001)
E. coli Selection:	Kanamycin (25 ug/mL)



[View online »](#)

ORF Nucleotide Sequence:

>RC216396 representing NM_032258
 Red=Cloning site Blue=ORF Green=Tags(s)

TTTTGTAATACGACTCACTATAGGGCGGCCGGAATTCGTCGACTGGATCCGGTACCGAGGAGATCTGCC
 GCC**CGGATCGCC**

ATGGACGTGGTAGAGGTCGCGGGCAGTTGGTGGGCACAAGAGCGAGAGGACATCATTATGAAATACGAAA
 AGGGACACCGAGCTGGGCTGCCAGAGGACAAGGGGCTAAGCCTTTTCGAAGCTACAACAACAACGTCGA
 TCATTTGGGGATTGTACATGAGACGAGCTGCCTCCTCTGACTGCGCGGGAGCGAAGCAAAATTCGGCGG
 GAGATCAGCCGAAAGAGCAAGTGGTGGATATGCTGGGAGACTGGGAGAAATACAAAAGCAGCAGAAAGC
 TCATAGATCGAGCGTACAAGGGAATGCCATGAACATCCGGGGCCGATGTGGTCAGTCTCCTGAACAC
 TGAGGAAATGAAGTTGAAAAACCCCGGAAGATACCAGATCATGAAGGAGAAGGGCAAGAGGTCATCTGAG
 CACATCCAGCGCATCGACCGGGACGTAAAGCGGGACATTAAGGAAGCATATATTCTTCAGGGATCGATACG
 GAACCAAGCAGCGGAACTACTCCACATCCTCCTGGCATATGAGGAGTAAACCCGGAGGTGGGCTACTG
 CAGGGACCTGAGCCACATCGCCGCTTGTCTCCTCTATCTTCTGAGGAGGATGCATTCTGGGCACTG
 GTGCAGCTGCTGGCCAGTGAGAGGCACTCCCTGCAGGGATTTACAGCCAAATGGCGGGACCGTCCAGG
 GGCTCCAAGACCAACAGGAGCATGTGGTAGCCACGTACAACCCAAGACCATGGGGCATCAGGACAAGAA
 AGATCTATGTGGGCACTGTTCCCGTTAGGCTGCCTCATCCGGATATTGATTGACGGGATCTCTCTCGGG
 CTCACCTGCGCCTGTGGGACGTGTATCTGGTAGAAGGCGAACAGGCGTTGATGCCGATAACAAGAATCG
 CCTTTAAGGTTACAGCAGAAGCGCCTCACGAAGACGTCCAGGTGTGGCCCGTGGGCACGTTTTTGAACCG
 GTTCGTTGATACCTGGCCAGGGATGAGGACACTGTGCTCAAGCATCTTAGGGCCTCTATGAAGAACTA
 ACAAGAAAGCAGGGGACCTGCCACCCAGCCAAACCCGAGCAAGGGTCGTGGCATCCAGGCTGTGC
 CGGCTTACGTGGCGGGAAGACCTCTGCAAGGGGGACAGGACGGCCCTCCAGGCCACACAGCCCGGTT
 CCGCGGGCCATTTGGTCAGCTTCCCGCCACGGGACCTCGTTCTTCCACACCCTGTCTGGTGGGGCT
 GTCGGGAAGACACCTACCCTGTGGCACTCAGGGTGTGCCAGCCCGCCCTGGCTCAGGAGGACCTC
 AGGGTCTCGGAGATTCTGCAGTGGAACCTCATGCCCGCCTCCAACGGACCTGGACGTAGAGGGCC
 TTGGTCCGCCATTATGATTTACAGACAGAGCTGCTGGTCCGTGCCATATCCAGGAGGACCAGCTGGCC
 CCCTGCTGGCAGGCTGAACACCTGCGGAGCGGTGAGATCGGCTTTCGCTGCACCCAGCACTGATTCCG
 ACCAGGGACCCCTTACAGAGTAGGGACGAACAGCCGTGTGCTCCACCTCAGGGCCTGCCTCTCGCG
 CCTCCACTTGAAAGTTCTCAGTCCCTCCAGGCTTC

ACGCGTACGCGGCCGCTCGAGCAGAAACTCATCTCAGAAGAGGATCTGGCAGCAAATGATATCCTGGATT
 ACAAGGATGACGACGATAAGGTTTAA

Protein Sequence:

>RC216396 representing NM_032258
 Red=Cloning site Green=Tags(s)

MDVVEVAGSWSWAQEREDIIMKYEKHRAGLPEDKGPFPFRSYNNVNDHLGIVHETELPPLTAREAKQIRR
 EISRKSKWVMDLGDWEKYKSSRKLIDRAYKMPMNIIRGPMWSVLLNTEEMKLNKPNRGYQIMKEKGRSSE
 HIQRIDRDVSGTLRKHIFFRDRYGTKQRELLHILLAYEYINPEVGYCRDLSHIAALFLLYLPEEDAFWAL
 VQLLASERHSLQGFHSPNGGTVQGLQDQEHVVATSQPKTMGHQDKDLGQCSPLGCLIRILIDGISLGL
 LTLRLWDVYLVEGEQALMPTIRIAFKVQKRLTKTSRCGPWARFCNRFVDTWARDEDTVLKHLRASMKKL
 TRKQGDLPKPEQSSASRPVPSRGGKTLCKGDRQAPPAPPARFPRPIWSASPPRAPSSTPCPGGA
 VREDTYPVGTQGVSPALAQGGPQGSWRFLOWNSMPRLPTDLVEGPWFRHYDFRQSCWVRAISQEDQLA
 PCWQAEHPAERVRSFAAAPSTDSQGTFFRAREQPCAPTS GPCLCGLHLESSQFPPGF

TRTRPLEQKLISEEDLAANDILDYKDDDDKV

Chromatograms:

https://cdn.origene.com/chromatograms/mk8017_e03.zip

Restriction Sites:

Sgfl-MluI

Cloning Scheme:


ACCN: NM_032258

ORF Size: 1647 bp

OTI Disclaimer: The molecular sequence of this clone aligns with the gene accession number as a point of reference only. However, individual transcript sequences of the same gene can differ through naturally occurring variations (e.g. polymorphisms), each with its own valid existence. This clone is substantially in agreement with the reference, but a complete review of all prevailing variants is recommended prior to use. [More info](#)

OTI Annotation: This clone was engineered to express the complete ORF with an expression tag. Expression varies depending on the nature of the gene.

Components: The ORF clone is ion-exchange column purified and shipped in a 2D barcoded Matrix tube containing 10ug of transfection-ready, dried plasmid DNA (reconstitute with 100 ul of water).

- Reconstitution Method:**
1. Centrifuge at 5,000xg for 5min.
 2. Carefully open the tube and add 100ul of sterile water to dissolve the DNA.
 3. Close the tube and incubate for 10 minutes at room temperature.
 4. Briefly vortex the tube and then do a quick spin (less than 5000xg) to concentrate the liquid at the bottom.
 5. Store the suspended plasmid at -20°C. The DNA is stable for at least one year from date of shipping when stored at -20°C.

RefSeq: [NM_032258.3](#)

RefSeq Size: 2072 bp

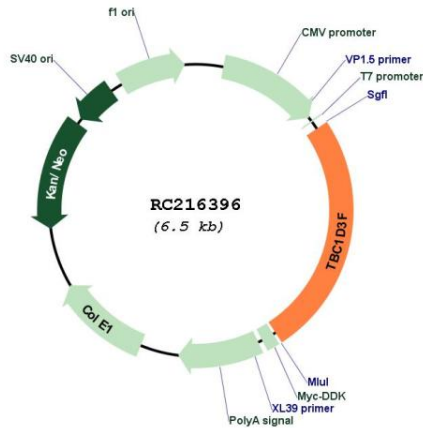
RefSeq ORF: 1650 bp

Locus ID: 84218

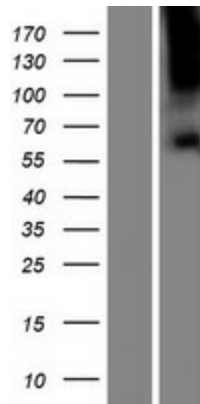
UniProt ID: [A6NER0](#)

Cytogenetics: 17q12
MW: 62 kDa
Gene Summary: Acts as a GTPase activating protein for RAB5. Does not act on RAB4 or RAB11 (By similarity).
 [UniProtKB/Swiss-Prot Function]

Product images:



Circular map for RC216396



Western blot validation of overexpression lysate (Cat# [LY410270]) using anti-DDK antibody (Cat# [TA50011-100]). Left: Cell lysates from untransfected HEK293T cells; Right: Cell lysates from HEK293T cells transfected with RC216396 using transfection reagent MegaTran 2.0 (Cat# [TT210002]).