

## Product datasheet for **RC216394**

### MS4A6A (NM\_152851) Human Tagged ORF Clone

#### Product data:

Product Type:	Expression Plasmids
Product Name:	MS4A6A (NM_152851) Human Tagged ORF Clone
Tag:	Myc-DDK
Symbol:	MS4A6A
Synonyms:	4SPAN3; 4SPAN3.2; CD20L3; CDA01; MS4A6; MST090; MSTP090
Mammalian Cell Selection:	Neomycin
Vector:	pCMV6-Entry (PS100001)
E. coli Selection:	Kanamycin (25 ug/mL)
ORF Nucleotide Sequence:	>RC216394 representing NM_152851 Red=Cloning site Blue=ORF Green=Tags(s)

TTTTGTAATACGACTCACTATAGGGCGGCCGGAATTCGTCGACTGGATCCGGTACCGAGGAGATCTGCC  
GCC**CGATCGCC**

ATGACATCACAACTGTTCCCAATGAGACCATCATAGTGCTCCCATCAAATGTCATCAACTTCTCCCAAG  
CAGAGAAACCCGAACCCACCAACCAGGGGCAGGATAGCCTGAAGAAACATCTACACGCAGAAATCAAAGT  
TATTGGGACTATCCAGATCTTGTGTGGCATGATGGTATTGAGCTTGGGGATCATTTTGGCATCTGCTTCC  
TTCTCTCAAATTTTACCAAGTACTTCTACACTGTTGAACTCTGCTTACCCATTCATAGGACCCTTTT  
TTTTTATCATCTCTGGCTCTCTATCAATCGCCACAGAGAAAAGGTTAACCAAGCTTTTGGTGCATAGCAG  
CCTGGTTGGAAGCATTCTGAGTGCTCTGCTGCCCTGGTGGGTTTCATTATCCTGTCTGTCAAACAGGCC  
ACCTTAAATCCTGCCTCACTGCAGTGGAAGCTCTCTCTGATGCTGATTTGCACTCTGCTGGAATTCTGC  
CTAGCTGTGCTCACTGCTGTGCTGCGGTGGAAACAGGCTTACTC

**ACGCGT**ACGCGGCCGCTCGAGCAGAACTCATCTCAGAAGAGGATCTGGCAGCAAATGATATCCTGGATT  
ACAAGGATGACGACGATAAGGTTTAA

Protein Sequence:	>RC216394 representing NM_152851 Red=Cloning site Green=Tags(s)
-------------------	--

MTSQPVPNETIIVLPSNVINFSQAEPPTNQGDLSLKKHLHAEIKVIGTIQILCGMMVLSLGIILASAS  
FSPNFTQVTSTLLNSAYPFIGPFFFIIISGLSIATEKRLTKLLVHSSLVGSILSALSALVGFIIISVKQA  
TLNPASLQWNSLSDADLHSAGILPSCAHCCTAAVETGLL

**TRTRPLEQKLISEEDLAANDILDYKDDDDKV**

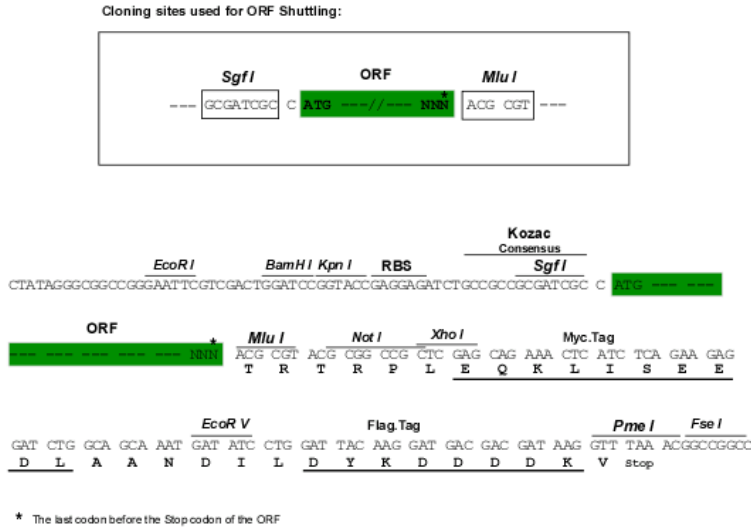
Chromatograms:	<a href="https://cdn.origene.com/chromatograms/mk6511_a07.zip">https://cdn.origene.com/chromatograms/mk6511_a07.zip</a>
----------------	---



[View online »](#)

Restriction Sites: SgfI-MluI

Cloning Scheme:



ACCN: NM\_152851

ORF Size: 534 bp

OTI Disclaimer: The molecular sequence of this clone aligns with the gene accession number as a point of reference only. However, individual transcript sequences of the same gene can differ through naturally occurring variations (e.g. polymorphisms), each with its own valid existence. This clone is substantially in agreement with the reference, but a complete review of all prevailing variants is recommended prior to use. [More info](#)

OTI Annotation: This clone was engineered to express the complete ORF with an expression tag. Expression varies depending on the nature of the gene.

Components: The ORF clone is ion-exchange column purified and shipped in a 2D barcoded Matrix tube containing 10ug of transfection-ready, dried plasmid DNA (reconstitute with 100 ul of water).

Reconstitution Method:

1. Centrifuge at 5,000xg for 5min.
2. Carefully open the tube and add 100ul of sterile water to dissolve the DNA.
3. Close the tube and incubate for 10 minutes at room temperature.
4. Briefly vortex the tube and then do a quick spin (less than 5000xg) to concentrate the liquid at the bottom.
5. Store the suspended plasmid at -20°C. The DNA is stable for at least one year from date of shipping when stored at -20°C.

RefSeq: [NM\\_152851.2](#)

RefSeq Size: 1460 bp

RefSeq ORF: 537 bp

Locus ID: 64231

UniProt ID: [Q9H2W1](#)

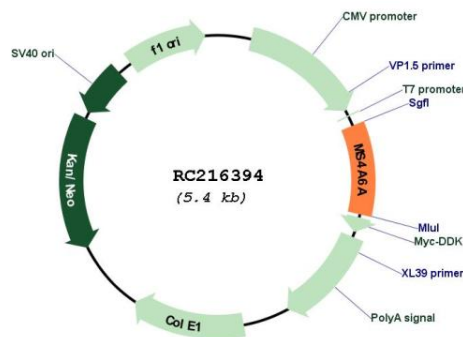
**Cytogenetics:** 11q12.2

**Protein Families:** Druggable Genome, Transmembrane

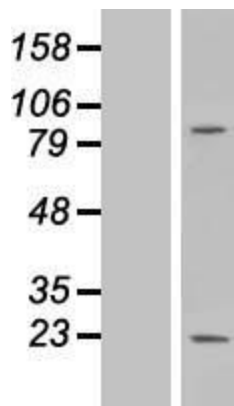
**MW:** 18.6 kDa

**Gene Summary:** This gene encodes a member of the membrane-spanning 4A gene family. Members of this nascent protein family are characterized by common structural features and similar intron/exon splice boundaries and display unique expression patterns among hematopoietic cells and nonlymphoid tissues. The gene encoding this protein is localized to 11q12.1, among a cluster of family members. Alternative splicing of this gene results in several transcript variants that encode different protein isoforms. [provided by RefSeq, Oct 2011]

**Product images:**



Circular map for RC216394



Western blot validation of overexpression lysate (Cat# [LY407268]) using anti-DDK antibody (Cat# [TA50011-100]). Left: Cell lysates from untransfected HEK293T cells; Right: Cell lysates from HEK293T cells transfected with RC216394 using transfection reagent MegaTran 2.0 (Cat# [TT210002]).