

Product datasheet for RC216393

RIMBP2 (NM_015347) Human Tagged ORF Clone

Product data:

Product Type:	Expression Plasmids
Product Name:	RIMBP2 (NM_015347) Human Tagged ORF Clone
Tag:	Myc-DDK
Symbol:	RIMBP2
Synonyms:	PPP1R133; RBP2; RIM-BP2
Mammalian Cell Selection:	Neomycin
Vector:	pCMV6-Entry (PS100001)
E. coli Selection:	Kanamycin (25 ug/mL)
ORF Nucleotide Sequence:	>RC216393 representing NM_015347 Red=Cloning site Blue=ORF Green=Tags(s)

TTTTGTAATACGACTCACTATAGGGCGGCCGGGAATTCGTCGACTGGATCCGGTACCGAGGAGATCTGCCGCCGCGATCGCC

ATGCGAGAGGGCGGCTGAACGGCGGCAGCAGCTGCAGTTGGAGCATGACCAGGCCCTGGCTGTTCTCAGTG
CCAAGCAGCAGGAAATTGACCTTCTGCAGAAGTCCAAGTTTCGAGAGCTGGAAGAGAAATGCCGGACTCA
AAGTGAGCAGTTCAACCTGCTGTCCCGGACCTGGAGAAGTTCGGCAGCAGCTGGCAAGATTGACCTG
CTGGGTGGCAGCGCGGTGGCCCCCTGGACATCTCCACGGCCCCAGCAAGCCTTCCACAGTTTATGATG
ATGGCCTAGCCACCTCCCTCGGCAAAGGTCAGGAGAGCGCTATTGGAGGCAGCTCTGCGATCGGTGAATA
TATCCGGCCCCCTCCGCAGCCTGGTGACAGGCCGGAGCCTCTGTCCGCCAAGCCACCTTCTGTGAGAG
TCCGGTAGCGCAAGATGCAGATCTGAGTCAGACATGGAGAATGAACGGAATTCGAATACCTCCAAGCAGA
GATACTCGGGGAAGGTCCACCTCTGTGTTGCCCGCTATAGTTACAACCCCTTCGATGGACCGAACGAGAA
CCCCGAAGCTGAGCTGCCCTCACGGCGGGAAAAACCTCTACGTCTATGGAGACATGGATGAGGATGGG
TTCTATGAAGGAGAGCTCCTCGATGGCCAGAGGGGTCTGGTGCCCTCAAACCTTCGTGGACTTTGTGCAGG
ACAACGAGTCGCGGTTGGCAAGCAGCCTGGGGAACGAGCAGGATCAGAATTCATCAACCATCCGGCAT
CGGCCTGGAGGGAGAGCACATCCTGGACCTCCACTCCCCAACCCACATAGATCGGGGCATACCCGACAAC
AGTGCCGGGACCCTGGACGTGAACATCGACGACATCGGAGAAGACATCGTGCCTTACCCTAGAAAAATCA
CCCTCATCAAACAACTCGCCAAAAGTGTTATTGTGGGCTGGGAGCCCCGGCGGTGCCACCAGGATGGGG
AACGGTGAGCAGCTACAACGTCCTGGTGGACAAGGAGACACGCATGAACCTCACGCTGGGGAGCAGAACT
AAAGCCCTCATCGAGAAGCTCAACATGGCAGCCTGCACCTACCGCATCTCCGTGCAGTGCCTACCAGCA
GGGGCAGCTCGGATGAGCTGCAGTGCACGCTGCTGGTGGCAAGGACGTGGTGGTGGCCCCCTCCACCT
GCGGGTGGACAACATCACGCAGATCTCCGCCAGCTCTCCTGGCTACCCACCAACAGCAACTACAGCCAC
GTCATCTTCTCAACGAGGAGGAGTTCGACATCGTCAAGGCCGCCAGGTACAAGTACCAGTCTTCAATC
TCAGGCCAACATGGCCTATAAGGTGAAGTTCTGGCCAAAACCCACCAGATGCCGTGGCAGCTCCCGCT
GGAGCAAAGGGAGAAGAAGGAGGCTTTGTGGAGTTCTCCACGTTGCCTGCAGGACCCCCAGCACCCCCA



[View online >](#)

CAAGATGTTACCGTCCAGGCTGGGGTGACCCCGCCACCATCCGGTCTCCTGGAGACCCTGTGCTGA
 CGCCACCGGGTGTCCAATGGCGCAAACGTTACCGGCTACGGCGTGTATGCCAAAGGCAGAGGGTGGC
 TGAAGTCATCTTCCACGGCAGACAGCAGCGGCGTGGAGCTTGTGCGGCTGCGGAGCCTGGAGGCCAAG
 GGCGTGACCGTGCAGACCTCTCCGCCAGGGCAGTCCGTGGACTCTGCAGTTGCTGCCGTTCCCCCG
 AGCTCCTGGTGCCTCCTACCCCCACCCGAGACCTGCACCCCAATCAAAGCCATTAGCAAGTTCTGGAGT
 CCCCAGAAACAAAGACGAGCACCTGGGTCCCCACGCCAGGATGGATGAGGCTGGGAGCAGAGCCGTGCA
 CCTGGCCCTGTGCATGGGCACATGCTGGAGCCGCCCGTGGGCCCGGAAGGCGGTCGCCCTACCCAGCC
 GCATCCTGCCACAGCCACAGGGCACCCCGGTGTCCACCACCGTCGCCAAGGCCATGGCCCGGAGGCCGC
 GCAGAGGGTGGCCGAGAGCAGCAGGTTAGAGAAAAGGAGCGTCTTCTAGAGAGAAGCAGCGGGGCAG
 TACGCCGCTCAGACGAGGAGGACGCTATGACTCTCCAGACTTCAAGAGGAGGGGCGCCTCGGTGGACG
 ACTTCTGAAAGGCTCTGAACTTGGCAAGCAGCCGACTGTTGCCATGGAGACGAGTACCACACAGAGAG
 CAGCCGGGGTCTGACCTCTCAGACATCATGGAGGAGGACGAGGAGGAGCTGATTCTGAAATGCAGCTG
 GAAGATGGGGGAAGGAGGCGGCCAGCGGCACGTCCACAATGCCCTCAAGATTTTAGGGAACCCAGCCT
 CTGCAGGACGGGTGGATCACATGGGCCGAGGTTTCCCGTGGCAGCGCTGGTCTCAGAGTCCCGGCC
 CGTGACAGTCCCATCCATCGACGATTACGGGCGAGACCGCTTTTCCAGACTTCTATGAAGAGTCAGAA
 ACTGACCTGGTCCGAAGAGCTCCCGGCCGGATCTTTGTGGCTCTTTGACTACGACCCGCTACCA
 TGTCCCAAAACCCAGATGCTGCAGAGGAGGAGTTCCTTTAAAGAAGGCCAGATCATCAAGTTTATGG
 TGATAAGACGCTGATGGATTCTACCGTGGGAAACCTGTGCCCGGCTTGGCCTTATTCCTGTAAACATG
 GTCTCTGAGATACAAGCAGATGATGAGGAGATGATGGATCAGCTTCTTAGACAGGGCTTTCTCCCTGA
 ATACACCTGTGGAGAAAATAGAGAGAAGCAGGAGAAGTGGCAGGCGTCATTCCGTATCGACGCGGAGAA
 TGGTGGCCCTGTGACTACGACCCAGAGAAAGCTCGCCAACGTCGATGTCGAGGCCGAACCTACATTT
 TGCACAGGAGATATTATTACAGTTTTTGGTGAATTTGATGAAGATGGATTTTATTATGGGAGCTGAATG
 GGCAGAAAGCCCTGTGCCCTCAAACCTTTGGAAGAAGTGCCTGATGACGTAGAAGTCTATCTTTCTGA
 TGCTCCATCCCCTACTCTCAAGATACGCCAATGCGCTCAAAGGCAAAAAGGAAGAAGAGTGTTCATTT
 ACACCT

ACGCGTACGCGGCCGCTCGAGCAGAACTCATCTCAGAAGAGGATCTGGCAGCAATGATATCCTGGATT
 ACAAGGATGACGACGATAAGGTTTAA

Protein Sequence:

>RC216393 representing NM_015347

Red=Cloning site Green=Tags(s)

MREAAERRQQLQLEHDQALAVLSAKQEQEIDLLQKSKVRELEEKCRTOSEQFNLLSRDLEKFRQHAGKIDL
 LGGSAVAPLDISTAPSKPFPQFMNGLATSLGKGQESAIGGSSAIGEYIRPLPQPGDRPEPLSAKPTFLSR
 SGSARCRSESDMENERNSNTSKQRYSGKVHLCVARYSYNPFDPNENPEAELPLTAGKYL VYVGDMDEDG
 FYEGELLDGQRGLVPSNFVDFVQDNESRLASTLGNEQDQNFINHSGIGLEGEHILDLHSPHIDAGITDN
 SAGTLDVNIDDIGEDIVPYPRKITLIKQLAKSVIVGWEPVAVPPGWTVSYNVLDKETRMNLTLSRT
 KALIEKLNMAACTYRISVQCVTSRGSSDELQCTLLVGKDVVAVPAPSHLRVDNITQISAQLSWLPTNSYSH
 VIFLNEEFDIVKAARYKYQFFNLRPNMAYKVKVLAKPHQMPWQLPLEQREKKEAFVEFSTLPAGPPAPP
 QDVTVQAGVTPATIRVSWRPPVLTPTGLSNGANVTGYGVYAKGQRAEVIFPTADSTAVELVRLRSLEAK
 GVTVRTLSAQGESVDSAVAAPPELLVPPTPHRPAPQSKPLASSGVPETKDEHLGPHARMDEAWEQSR
 PGPVHGHMLEPPVGPGRSPSPSRILPQPQGTVPSTTVAKAMAREAAQVAESSRLEKRSVFLERSAGQ
 YAASDEEDAYDSPDFKRRGASVDDFLKGSSELGKQPHCCHGDEYHTESSRGSDDLSDIMEDEEELYSEMQ
 EDGRRRPSGTSHNALKILGNPASAGRVDHMGRFRFRGSAGPQRSRPVTVPSIDYGRDRLSPDFYEESE
 TDPGAEELPARIFVALFDYDPLTMSPNDAEEELPFKEGQIIKVVYGDKADGDFYRGETCARLGLIPCNM
 VSEIQADDEEMDQLLRQGFPLNTPVEKIERSSRRHSVSTRMVALYDYDPRESSPNVDVEAELTF
 CTGDIITVFGIIDEEDGFYYGELNGQKGLVPSNLFEEVPDDVEVYLSDAPSHYSQDTPMRSKAKRKKSVHF
 TP

TRTRPLEQKLISEEDLAANDILDYKDDDDKV

Chromatograms:

https://cdn.origene.com/chromatograms/mk8017_e04.zip

Restriction Sites: SgfI-MluI

Cloning Scheme:



ACCN: NM_015347

ORF Size: 3156 bp

OTI Disclaimer: The molecular sequence of this clone aligns with the gene accession number as a point of reference only. However, individual transcript sequences of the same gene can differ through naturally occurring variations (e.g. polymorphisms), each with its own valid existence. This clone is substantially in agreement with the reference, but a complete review of all prevailing variants is recommended prior to use. [More info](#)

OTI Annotation: This clone was engineered to express the complete ORF with an expression tag. Expression varies depending on the nature of the gene.

Components: The ORF clone is ion-exchange column purified and shipped in a 2D barcoded Matrix tube containing 10ug of transfection-ready, dried plasmid DNA (reconstitute with 100 ul of water).

Reconstitution Method:

1. Centrifuge at 5,000xg for 5min.
2. Carefully open the tube and add 100ul of sterile water to dissolve the DNA.
3. Close the tube and incubate for 10 minutes at room temperature.
4. Briefly vortex the tube and then do a quick spin (less than 5000xg) to concentrate the liquid at the bottom.
5. Store the suspended plasmid at -20°C. The DNA is stable for at least one year from date of shipping when stored at -20°C.

RefSeq: [NM_015347.5](#)

RefSeq Size: 6322 bp

RefSeq ORF: 3159 bp

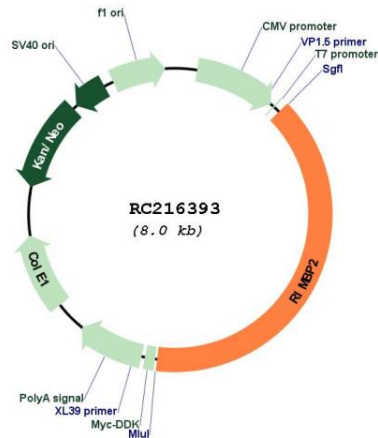
Locus ID: 23504

UniProt ID: [O15034](#)

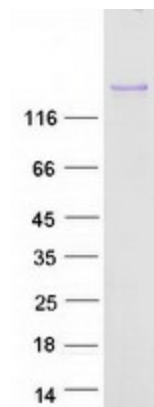
Cytogenetics: 12q24.33
MW: 115.8 kDa

Gene Summary: Plays a role in the synaptic transmission as bifunctional linker that interacts simultaneously with RIMS1, RIMS2, CACNA1D and CACNA1B.[UniProtKB/Swiss-Prot Function]

Product images:



Circular map for RC216393



Coomassie blue staining of purified RIMBP2 protein (Cat# [TP316393]). The protein was produced from HEK293T cells transfected with RIMBP2 cDNA clone (Cat# RC216393) using MegaTran 2.0 (Cat# [TT210002]).