

Product datasheet for **RC216392**

SLC6A11 (NM_014229) Human Tagged ORF Clone

Product data:

Product Type:	Expression Plasmids
Product Name:	SLC6A11 (NM_014229) Human Tagged ORF Clone
Tag:	Myc-DDK
Symbol:	SLC6A11
Synonyms:	GAT-3; GAT3; GAT4
Mammalian Cell Selection:	Neomycin
Vector:	pCMV6-Entry (PS100001)
E. coli Selection:	Kanamycin (25 ug/mL)



[View online »](#)

ORF Nucleotide
Sequence:

>RC216392 representing NM_014229
Red=Cloning site Blue=ORF Green=Tags(s)

TTTTGTAATACGACTCACTATAGGGCGGCCGGGAATTCGTCGACTGGATCCGGTACCGAGGAGATCTGCC
GCC**CGGATCGCC**

ATGACGGCGGAGAAGGCGCTGCCCTGGGCAATGGGAAGGCTGCTGAGGAGGCGCGGGAGTCCGAGGCGC
CGGGTGGCGGCTGCAGCAGCGGGGGCGCGGCCCGCGGCCACCCGCGGTCAAGCGCGACAAGGCGGT
CCACGAGCGCGGCCACTGGAACAACAAGGTGGAGTTCGTGCTGAGCGTGGCCGGGAGATCATTGGGCTG
GGCAACGTGTGGCGCTTCCCCTACCTGTGCTACAAGAACGGAGGAGGGCATTCTGATTCCCTACGTGG
TGTTTTTTATTTGCTGTGGAATTCCTGTTTTTCTGGAGACAGCTCTGGGCAGTTTACAAGTGAAGG
TGGCATTACGTGTTGGAGGAAAGTTGCCCTTTATTTGAAGGCATTGGCTATGCAACACAGGTGATTGAG
GCCCATCTGAATGTGACTACATCATCCTGGCATGGCCATTTTTTACCTGAGCAACTGCTTCACTA
CTGAGCTACCTGGGCTACCTGTGGCATGAGTGAACACAGAGAATTGTGTGGAGTTCCAGAACTGAA
TGTGAGCAACTACAGCCATGTGTCTCTGCAGAATGCCACCTCCCCTGTCATGGAGTTTTGGGAGCACCGG
GTCTGGCCATCTCTGACGGGATCGAGCACATCGGGAACCTTCGCTGGGAGCTGGCCTTGTGTCTCTTGG
CAGCCTGGACCATCTGTTACTTCTGTATCTGGAAGGGGACCAAGTCTACAGGAAAGGTTGTATACGTGAC
TGCGACATTTCCCTACATCATGCTGCTGATCCTCTGATACGAGGGGTACGTTGCCCGGGGCTCAGAG
GGCATCAAGTTCTACTTGTACCTGACCTCTCCCGGCTCTCCGACCCCAAGTCTGGGTAGATGTGGAA
CGCAGATCTTTTTCTCCTATGCCATTTGCCTGGCTGTCTGACCGCTCTGGGAAGTTATAACAATTATAA
CAACAAGTGTACAGGGACTGCATAGCTCTGTTGCCTGAACAGCGGCACCAGCTTCGTGGCTGGGTTT
GCCATCTTCTCAGTCTGGGTTTTATGGCGTACGAGCAGGGGTACCCATTGTGAGTGGCAGAGTCAG
GCCCCGGCCTGGCCTTTATGCGTACCCCAAGGCGGTACCATGATGCCCTCTCTCCCGCTGTGGCCAC
CTTGTTCTTCATGATGCTCATCTTCTGGCCTGGACAGCCAGTTTGTGTGTGGAAAGCCTGGTGACC
GCCGTGGTGGACATGTACCCCAAGGTTTTCCGGAGGGTTACCGCGGGAGCTGCTCATCTAGCCTTGT
CTGTTATCTCCTATTTTCTGGCCTCGTGATGTTAACAGAGGGTGGCATGTACATCTTCCAGCTCTTTGA
CTCCTATGCCGCCAGTGGGATGTGCCTTCTTCTGGCCATCTTGTAGTGCATCTGCATCGGCTGGGTG
TATGGAAGCAACCGTTCTATGATAACATTGAAGACATGATTGGTACCGGCCACCGTCGCTCATTAAGT
GGTCTGGATGATCATGACCCCTGGGATCTGCGCGGGATCTTCATCTTCTTCTGATCAAGTACAAGCC
ACTCAAGTACAACAACATCTACACCTACCCAGCCTGGGGCTATGGCATTGGCTGGCTCATGGCCCTGTCC
TCCATGCTCTGCATCCCCTCTGGATCTGCATCACAGTGTGGAAGACGGAGGGGACACTGCCCGAGAAAC
TCCAGAAGTTGACGACCCCGCAGACAGATCTGAAAATGCGGGGCAAGCTTGGGGTGGCCACCGATGGT
GACAGTTAATGACTGTGATGCCAAACTCAAGAGTGACGGGACCATCGCAGCCATCACAGAGAAGGAGACG
CACTTC

ACGCGTACGCGGCCGCTCGAGCAGAAACTCATCTCAGAAGAGGATCTGGCAGCAATGATATCCTGGATT
ACAAGGATGACGACGATAAGGTTTAA

Protein Sequence: >RC216392 representing NM_014229
 Red=Cloning site Green=Tags(s)

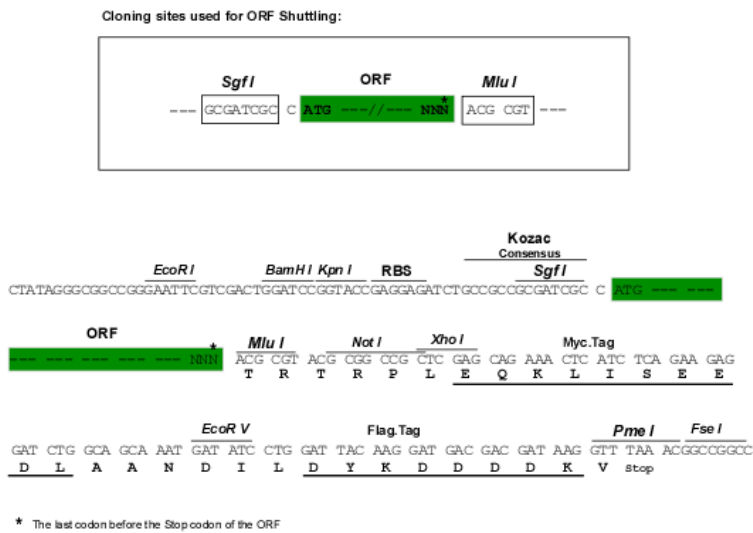
MTAEKALPLGNGKAAEEARESEAPGGGCSSGGAAPARHPRVCRDKAVHERGHWNKVEFVLSVAGEIIGL
 GNVWRFPYLCYKNGGGAFLIPYVVFICCGIPVFFLETALGQFTSEGGITCWRKVCPLFEGIGYATQVIE
 AHLNVYYYIILAWAIFYLSNCFTELWPATCGHEWNTENCVEFQKLNVSNSYSHVSLQATSPVMEFWEHR
 VLAISDGIHIGNLRWELALCLLAAWTICYFCIWKGTSTGKVVVYVATFPYIMLLILLIRGVTLPGASE
 GIKFYLYPDL SRLSDPQVWVDAGTQIFFSYAICLGCLTALGSYNNYNNCYRDCIMLCCLNSGTSFVAGF
 AIFSVLGFMAEQVPIAEVAESGPGLAFAIYPAKAVTMMPLSPLWATLFFMMLIFLGLDSQFVCVESLVT
 AVVDMYPKVFRRGYRRELLILALSVISYFLGLVMLTEGGMYIFQLFDSYAASGMCLLFVAIFECICIGWV
 YGSNRFYDNIEDMIGYRPPSLIKWCMMIMTPGICAGIFIFFLIKYPKLYNNIYTYPAWGYGIGWLMALS
 SMLCIPLWICITVWKTEGTLPEKLQKLTTPSTDLKMRGKLGVSPRMVTVNDCAKLSKSDGTIAAITEKET
 HF

TRTRPLEQKLISEEDLAANDILDYKDDDDKV

Chromatograms: https://cdn.origene.com/chromatograms/mk6207_g07.zip

Restriction Sites: SgfI-MluI

Cloning Scheme:



ACCN: NM_014229

ORF Size: 1896 bp

OTI Disclaimer: The molecular sequence of this clone aligns with the gene accession number as a point of reference only. However, individual transcript sequences of the same gene can differ through naturally occurring variations (e.g. polymorphisms), each with its own valid existence. This clone is substantially in agreement with the reference, but a complete review of all prevailing variants is recommended prior to use. [More info](#)

OTI Annotation: This clone was engineered to express the complete ORF with an expression tag. Expression varies depending on the nature of the gene.

Components: The ORF clone is ion-exchange column purified and shipped in a 2D barcoded Matrix tube containing 10ug of transfection-ready, dried plasmid DNA (reconstitute with 100 ul of water).

Reconstitution Method:

1. Centrifuge at 5,000xg for 5min.
2. Carefully open the tube and add 100ul of sterile water to dissolve the DNA.
3. Close the tube and incubate for 10 minutes at room temperature.
4. Briefly vortex the tube and then do a quick spin (less than 5000xg) to concentrate the liquid at the bottom.
5. Store the suspended plasmid at -20°C. The DNA is stable for at least one year from date of shipping when stored at -20°C.

Note: Plasmids are not sterile. For experiments where strict sterility is required, filtration with 0.22um filter is required.

RefSeq: [NM_014229.3](#)

RefSeq Size: 1991 bp

RefSeq ORF: 1899 bp

Locus ID: 6538

UniProt ID: [P48066](#)

Cytogenetics: 3p25.3

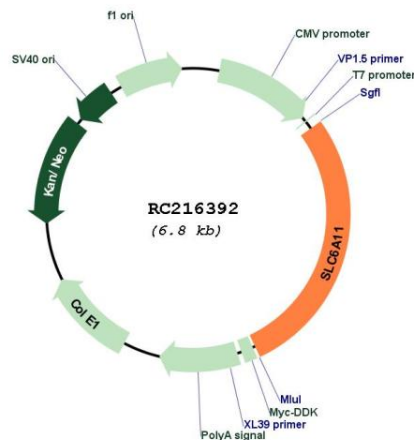
Domains: SNF

Protein Families: Druggable Genome, Transmembrane

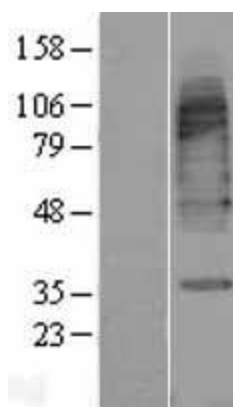
MW: 70.4 kDa

Gene Summary: The protein encoded by this gene is a sodium-dependent transporter that uptakes gamma-aminobutyric acid (GABA), an inhibitory neurotransmitter, which ends the GABA neurotransmission. Defects in this gene may result in epilepsy, behavioral problems, or intellectual problems. Two transcript variants encoding different isoforms have been found for this gene. [provided by RefSeq, Dec 2015]

Product images:



Circular map for RC216392



Western blot validation of overexpression lysate (Cat# [LY415420]) using anti-DDK antibody (Cat# [TA50011-100]). Left: Cell lysates from untransfected HEK293T cells; Right: Cell lysates from HEK293T cells transfected with RC216392 using transfection reagent MegaTran 2.0 (Cat# [TT210002]).