

## Product datasheet for RC216391

### Phospholipase C gamma 1 (PLCG1) (NM\_182811) Human Tagged ORF Clone

#### Product data:

Product Type:	Expression Plasmids
Product Name:	Phospholipase C gamma 1 (PLCG1) (NM_182811) Human Tagged ORF Clone
Tag:	Myc-DDK
Symbol:	Phospholipase C gamma 1
Synonyms:	NCKAP3; PLC-II; PLC1; PLC148; PLCgamma1
Mammalian Cell Selection:	Neomycin
Vector:	pCMV6-Entry (PS100001)
E. coli Selection:	Kanamycin (25 ug/mL)
ORF Nucleotide Sequence:	>RC216391 representing NM_182811 Red=Cloning site Blue=ORF Green=Tags(s)

TTTTGTAATACGACTCACTATAGGGCGGCCGGAATTCGTCGACTGGATCCGGTACCGAGGAGATCTGCC  
GCCCGGATCGCC

ATGGCGGGCGCCGCTCCCTTGCGCCAACGGCTGCGGGCCCGCGCCCTCGGACGCCGAGGTGCTGC  
ACCTCTGCCGAGCCTCGAGGTGGGCACCGTCATGACTTGTCTACTCCAAGAAGTCGACGCGACCCGA  
GCGGAAGACCTCCAGGTCAAGCTGGAGACGCCAGATCACGTGGAGCCGGGGCCGACAAGATCGAG  
GGGGCCATTGACATTCGTGAAATTAAGGAGATCCGCCAGGAAGACCTCACGGGACTTTGATCGTATC  
AAGAGGACCCAGCTTCCGGCCGACCAGTCACATTGCTTTGTCATTCTCTATGGAATGGAATTTGCTC  
GAAAACGCTGAGCCTGCAAGCCACATCTGAGGATGAAGTGAACATGTGGATCAAGGGCTTAAGTGGCTG  
ATGGAGGATACATTGCAGGCACCCACACCCTGCAGATTGAGAGGTGGCTCCGGAAGCAGTTTTACTCAG  
TGGATCGGAATCGTGAGGATCGTATATCAGCCAAGGACCTGAAGAACATGCTGTCCAGGTCAACTACCG  
GGTCCCCAACATGCGCTTCTCCGAGAGCGGCTGACGGACCTGGAGCAGCGCAGCGGGGACATCACCTAC  
GGCAGTTTGCTCAGCTGTACCGCAGCCTCATGTACAGCGCCAGAAGACGATGGACCTCCCTTCTTG  
AAGCCAGTACTCTGAGGGCTGGGAGCGGCCGAGCTTGGCCAGTGTCCCTTCTGAGTCCAGCAGTT  
CCTTCTTGACTACCAGGGGAGCTGTGGCTGTGATCGCCTCCAGGTGCAGGAGTTCATGCTCAGCTTC  
CTCCGAGACCCCTTACGAGAGATCGAGGAGCCATACTTCTCTGGATGAGTTTGTCCACCTCCTGTTCT  
CCAAAGAGAACAGTGTGTGAACTCGCAGCTGGATGCAAGTATGCCCGACACCATGAACAACCCCTTTTC  
CCTACTGAGTCTCCTCCTCGCACAAACAGTACCTGACCGGGGACCAGTTCTCCAGTGAGTCTCCTTG  
GAAGCCTATGCTCGTGCCTGCGGATGGGCTGTCGCTGCATTGAGTTGGACTGCTGGGACGGCCCGGATG  
GGATGCCAGTTATTTACCATGGGCACACCCTTACCACCAAGATCAAGTTCTCAGATGTCCTGCACACCAT  
CAAGGAGCATGCCTTTGTGGCTCAGAGTACCCAGTCATCCTGTCCATTGAGGACCACTGCAGCATTGCC  
CAGCAGAGAAACATGGCCCAATACTTCAAGAAGGTGCTGGGGACACACTCCTACCAAGCCCGTGGAGA  
TCTCTGCCGACGGCTCCCTCACCAACCAGCTTAAGAGGAAGATCCTCATCAAGCACAGAAGCTGGC  
TGAGGGCAGTGCCTACGAGGAGGTGCCTACATCCATGATGACTCTGAGAACGACATCAGCAACTCTATC



View online »

AAGAATGGCATCCTCTACCTGGAGGACCCTGTGAACCACGAATGGTATCCCCACTACTTTGTTCTGACCA  
GCAGCAAGATCTACTACTCTGAGGAGACCAGCAGTGACCAGGGCAACGAGGATGAGGAGGAGCCCAAGGA  
GGTCAGCAGCAGCACAGAGCTGCACTCCAATGAGAAGTGGTTCCATGGGAAGCTAGGGGCAGGGCGTGAC  
GGGCGTCACATCGCTGAGCGCCTGCTTACTGAGTACTGCATCGAGACCGGAGCCCTGACGGCTCCTTCC  
TCGTGCGAGAGAGTGAGACCTTCGTGGGCGACTACACGCTCTCTTCTGGCGGAACGGGAAAAGTCCAGCA  
CTGCCGTATCCACTCCCGCAAGATGCTGGGACCCCAAGTTCTTCTTGACAGACAACCTCGTCTTTGAC  
TCCCTCTATGACCTCATCAGCCTACCAGCAGGTGCCCTGCGCTGTAATGAGTTTGAGATGCGACTTT  
CAGAGCCTGTCCACAGACCAACGCCCCACGAGAGCAAAGAGTGGTACCACGCGAGCCTGACCAGAGCACA  
GGCTGAGCACATGCTAATGCGCGTCCCTCGTGATGGGGCCTTCTGGTGCGGAAGCGGAATGAACCCAAC  
TCATATGCCATCTCTTCCGGGTGAGGGCAAGATCAAGCATTGCCGTGCCAGCAAGAGGGCCAGACAG  
TGATGCTAGGGAACCTCGGAGTTCGACAGCCTTGTGACCTCATCAGTACTATGAGAAACACCCGTATA  
CCGCAAGATGAAGCTGCGCTATCCCATCAACGAGGAGGCACTGGAGAAGATTGGCACAGCTGAGCCTGAC  
TACGGGGCCCTGTATGAGGGACGCAACCCTGGCTTCTATGTAGAGGCAAACCCTATGCCAACTTTCAAGT  
GTGCACTCAAAGCCCTTTGACTACAAGGCCAGAGGGAGGACGAGCTGACCTTCATCAAGAGCGCCAT  
CATCCAGAATGTGGAGAAGCAAGAGGGAGGCTGGTGGCAGGGGACTACGGAGGGAAGAAGCAGCTGTGG  
TCCCATCAAACCTACGTGGAAGAGATGGTCAACCCCGTGGCCCTGGAGCCGGAGAGGGAGCACTTGACG  
AGAACAGCCCCCTAGGGGACTTGCTGCGGGGGTCTTGGATGTGCCGGCTTGTGAGATTGCCATCCGTCC  
TGAGGGCAAGAACAACCGGCTCTTCGTCTTCTCCATCAGCATGGCGTCCGTGGCCACTGGTCCCTGGAT  
GTTGCTGCCGACTCACAGGAGGAGCTGCAGGACTGGGTGAAAAAGATCCGTGAAGTGGCCAGACAGCAG  
ACGCCAGGCTCACTGAAGGGAAGATAATGGAACGGAGGAAGAAGATTGCCCTGGAGCTCTCTGAACTTGT  
CGTCTACTGCCGGCTGTCCCTTTGATGAAGAGAAGATTGGCACAGAACGTGCTTGCTACCGGGACATG  
TCATCCTTCCCGAAAACAAGGCTGAGAAATACGTGAACAAGGCCAAAGGCAAGAAGTTCCTTCACTACA  
ATCGACTGCAGCTCTCCCGCATCTACCCCAAGGGCCAGCAGTGGATTCCCTCAACTACGATCCTTTGCC  
CATGTGGATCTGTGGCAGTCAGCTTGTGGCCCTCAACTTCCAGACCCCTGACAAGCCTATGCAGATGAAC  
CAGGCCCTCTTCATGACGGGCAGGCACTGTGGCTACGTGCTGCAGCCAAGCACCATGCGGGATGAGGCCT  
TCGACCCCTTTGACAAGAGCAGCCTCCGCGGGCTGGAGCCATGTGCCATCTCTATTGAGGTGCTGGGGC  
CCGACATCTGCCAAGAATGGCCGAGGCATTGTGTGCTTTTGTGGAGATTGAGGTGGCTGGAGCTGAG  
TATGACAGCACC AAGCAGAAGACAGAGTTTGTGGTGGACAATGGACTCAACCCTGTATGGCCAGCCAAGC  
CCTTCCACTTCCAGATCAGTAACCCTGAATTTGCCTTTCTGCGCTTCGTGGTGTATGAGGAAGACATGTT  
TAGTGACCAGAATTTCTGGCTCAGGCTACTTTCCAGTAAAAGGCTGAAGACAGGATACAGAGCAGTG  
CCTTTGAAGAACAACACAGTGAGGACCTGGAGTTGGCCTCCCTGCTGATCAAGATTGACATTTTCCCTG  
CCAAGGAGAATGGTGACCTCAGTCCCTCAGTGGTACGTCCCTGCGGGAGCGGGGCTCAGATGCCTCAGG  
CCAGCTGTTTCATGGCCGAGCCCGGAAGGCTCCTTTGAATCCCGCTACCAGCAGCCGTTTGAGGACTTC  
CGCATCTCCAGGAGCATCTCGCAGACATTTTGACAGTCGAGAACGAAGGGCCCCAAGAAGGACTCGGG  
TCAATGGAGACAACCGCCTC

ACGCGTACGCGGCCGCTCGAGCAGAACTCATCTCAGAAGAGGATCTGGCAGCAATGATATCCTGGATT  
ACAAGGATGACGACGATAAGGTTTAA

**Protein Sequence:** >RC216391 representing NM\_182811  
Red=Cloning site Green=Tags(s)

```
MAGAASPCANGCGPGAPSDAEVLHLCRSLEVGTVMTLFYSKKSQRPERKTFQVKLETRQITWSRGADKIE
GAIIDIREIKEIRPGKTSRDFDRYQEDPAFRPDQSHCFVILYGMFRLKTL SLQATSEDEVNMWIKGLTWL
MEDTLQAPTPLQIERWLKQFYSDNRNREDRISAKDLKNMLSQVNYRVPNMRFLRERLTDLEQRSGDITY
GQFAQLYRSLMYSAQKTMDFLEASTLRAGERPEL CRVSLPEFQQFLLDYQGELWAVDRLQVQEFMLSF
LRDPLREIEEYPFFLDEFVTF LFSKENSVWNSQLDAVCPDTMNNPLSHYWISSSHNTYLTDGQFSSESSL
EAYARCLRMGCRCIELD CWDGDPMPVIYHGHTLTTKIKFSDVLHTIKEHAFVASEYVILSIEDHCSIA
QQRNMAQYFKKVLGDTLLTKPVEISADGLPSPNQLKRKILIKHKKLAEGSAYEEVPTSMYSENDISNSI
KNGILYLEDPVNH EWYPHYFVL TSSKIYYSEETSSDQGNEDDEEPEVSSSTELHSNEKWFHGKLAGRD
GRHIAERLLTEYCIETGAPDGSFLVRESETFVGDYTL SFWRNGKVQHCRIHRSQDAGTPKFFLTDNLVFD
SLYDLITHYQQVPLRCNEFEMRLSEVPVQTNAHESKEWYHASLTRAQAEHMLMRVPRDGAFLVRKRNEPN
SYAISFRAEGKIKHCRVQQEGQTVMLGNSEFDSLVDLISYYEKHPLYRKMMLRYPINEEAEKIGTAEPD
YGALYEGRNPGFYVEANPMPTFKCAVKALFDYKAQREDELTFIKSAIQNVEKQEGGWWRGDYGGKKQLW
FPSNYVEEMVNPVALEPEREHLDENSP LGDLLRGVLDVPACQIAIRPEGKNNRLFVFSISMASVAHWSLD
VAADSQEELQDWVKKIREVAQTADARL TEGKIMERRKIALELSELVVYCRPVPFDEEKIGTERACYRDM
SSFPETKAEKYVNKAKGKKFLQYNRLQLSRIYPKGQRLDSSNYDPLPMWICGSQ LVALNFQTPDKPMQMN
QALFMTGRHCGYVLQPSTMRDEAFDPFDKSSLRGLEPCAISIEVLGARHLPKNGRIGVCPFEIEVAGAE
YDSTKQKTEFVVDNGLNPVWPAKPFHFQISNPEFAFLRFVVEEDMFSDQNFLAQATFPVKGLKTGYRAV
PLKNNYSEDL ELASLLIKIDIFPAKENGDLSPFSGTSLRERGSASGQLFHGRAREGSFESRYQQPFEDF
RISQEH LADHFD SRERRAPRRTRVNGDNRL
```

TRTRPLEQKLISEEDLAANDILDYKDDDDKV

**Restriction Sites:**

Sgfl-MluI

**Cloning Scheme:**

Cloning sites used for ORF Shuttling:



\* The last codon before the Stop codon of the ORF

**ACCN:** NM\_182811

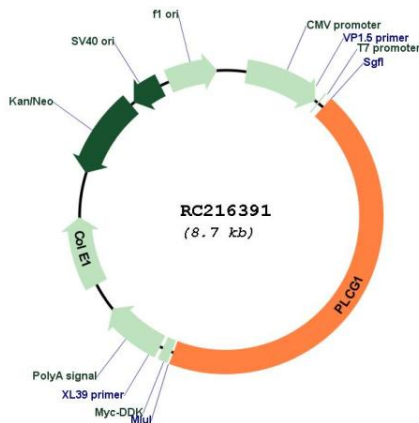
**ORF Size:** 3870 bp

<b>OTI Disclaimer:</b>	The molecular sequence of this clone aligns with the gene accession number as a point of reference only. However, individual transcript sequences of the same gene can differ through naturally occurring variations (e.g. polymorphisms), each with its own valid existence. This clone is substantially in agreement with the reference, but a complete review of all prevailing variants is recommended prior to use. <a href="#">More info</a>
<b>OTI Annotation:</b>	This clone was engineered to express the complete ORF with an expression tag. Expression varies depending on the nature of the gene.
<b>Components:</b>	The ORF clone is ion-exchange column purified and shipped in a 2D barcoded Matrix tube containing 10ug of transfection-ready, dried plasmid DNA (reconstitute with 100 ul of water).
<b>Reconstitution Method:</b>	<ol style="list-style-type: none"> <li>1. Centrifuge at 5,000xg for 5min.</li> <li>2. Carefully open the tube and add 100ul of sterile water to dissolve the DNA.</li> <li>3. Close the tube and incubate for 10 minutes at room temperature.</li> <li>4. Briefly vortex the tube and then do a quick spin (less than 5000xg) to concentrate the liquid at the bottom.</li> <li>5. Store the suspended plasmid at -20°C. The DNA is stable for at least one year from date of shipping when stored at -20°C.</li> </ol>
<b>RefSeq:</b>	<a href="#">NM_182811.2</a>
<b>RefSeq Size:</b>	5202 bp
<b>RefSeq ORF:</b>	3873 bp
<b>Locus ID:</b>	5335
<b>UniProt ID:</b>	<a href="#">P19174</a>
<b>Cytogenetics:</b>	20q12
<b>Protein Families:</b>	Druggable Genome
<b>Protein Pathways:</b>	Calcium signaling pathway, Epithelial cell signaling in Helicobacter pylori infection, ErbB signaling pathway, Fc epsilon RI signaling pathway, Fc gamma R-mediated phagocytosis, Glioma, Inositol phosphate metabolism, Leukocyte transendothelial migration, Metabolic pathways, Natural killer cell mediated cytotoxicity, Neurotrophin signaling pathway, Non-small cell lung cancer, Pathways in cancer, Phosphatidylinositol signaling system, T cell receptor signaling pathway, VEGF signaling pathway, Vibrio cholerae infection
<b>MW:</b>	148.4 kDa

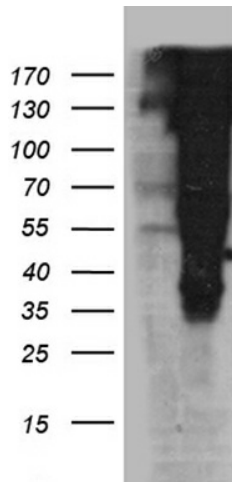
**Gene Summary:**

The protein encoded by this gene catalyzes the formation of inositol 1,4,5-trisphosphate and diacylglycerol from phosphatidylinositol 4,5-bisphosphate. This reaction uses calcium as a cofactor and plays an important role in the intracellular transduction of receptor-mediated tyrosine kinase activators. For example, when activated by SRC, the encoded protein causes the Ras guanine nucleotide exchange factor RasGRP1 to translocate to the Golgi, where it activates Ras. Also, this protein has been shown to be a major substrate for heparin-binding growth factor 1 (acidic fibroblast growth factor)-activated tyrosine kinase. Two transcript variants encoding different isoforms have been found for this gene. [provided by RefSeq, Jul 2008]

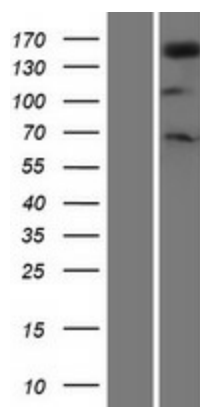
**Product images:**



Circular map for RC216391



HEK293T cells were transfected with the pCMV6-ENTRY control (Cat# [PS100001], Left lane) or pCMV6-ENTRY PLCG1 (Cat# RC216391, Right lane) cDNA for 48 hrs and lysed. Equivalent amounts of cell lysates (5 ug per lane) were separated by SDS-PAGE and immunoblotted with anti-PLCG1 rabbit polyclonal antibody (Cat# [TA890140]).



Western blot validation of overexpression lysate (Cat# [LY405368]) using anti-DDK antibody (Cat# [TA50011-100]). Left: Cell lysates from untransfected HEK293T cells; Right: Cell lysates from HEK293T cells transfected with RC216391 using transfection reagent MegaTran 2.0 (Cat# [TT210002]).