

Product datasheet for **RC216390**

ZNF708 (NM_021269) Human Tagged ORF Clone

Product data:

Product Type:	Expression Plasmids
Product Name:	ZNF708 (NM_021269) Human Tagged ORF Clone
Tag:	Myc-DDK
Symbol:	ZNF708
Synonyms:	KOX8; ZNF15; ZNF15L1
Mammalian Cell Selection:	Neomycin
Vector:	pCMV6-Entry (PS100001)
E. coli Selection:	Kanamycin (25 ug/mL)



[View online »](#)

ORF Nucleotide Sequence:

>RC216390 representing NM_021269
 Red=Cloning site Blue=ORF Green=Tags(s)

TTTTGTAATACGACTCACTATAGGGCGGCCGGAATTCGTCGACTGGATCCGGTACCGAGGAGATCTGCC
 GCC**CGGATCGCC**

ATGGGACCATTGACATTTATGGATGTGGCCATAGAATTCTCTCTGGAGGAGTGGCAGTGCCTGGACACAG
 CACAGCAGAATTTATATAGGAATGTCATGTTAGAGAATTATAGAAACCTGGTATTCTGGGTATTGCTGT
 GTCTAATTTAGACCTGATCACCTGTCTGGAGCAAGGAAAAGAGCCCTGGAATATGAAGAGACACGAGATG
 GCAGCCAAACCCCGACTATGTGTTCTCATTTTGCCAAAGACCTTAGGCCAGAGCAATATATAAAAAATT
 CTTTCCAACAAGTGATACTGAGAAGATAGGAAAATGTGGATATCAGAAAGGCTGTAAAAGTGTGGATGA
 GCATAAGTTGCACAAAGGAGGTACAAGGGACTTAACCGGTGTGTGACAACCTACCCAGAGCAAAATAGTT
 CAGTGTGACAAAACGTGAAAGTCTTTCATAAATATTCAAATGCAAGAGACATAAGATAAGACATACTG
 GAAAAATCCTTCAAATGTAAGAATGTGGCAAATCATTTTGCATGCTTTCACAACTAACTCAACATGA
 GATAATTCATACTGGAGAAAAACCTACAAATGTGAAGAATGTGGCAAAGCTTTTAAAAAGTCTCAAAC
 CTTACGAATCATAAGATAATTCATACTGGAGAGAAACCTACAAATGTGAAGAATGTGAAAAAGCTTTTA
 ACCAGTCTCAACTCTTACTAGACATAAGATAATTCATACTGGAGAGAACTCTACAAATGTGAAGAATG
 TGGCAAAGCTTTTAAACCGTCTCAAACCTTACTAAACATAAGATAGTTCATACTGGAGAGAAACCTAC
 AAATGTGAAGAATGTGGCAAAGCTTTTAAACAGTCTCAAACCTTACTAATCACAAGAAAATTCATACTG
 GAGAGAAACCTACAAATGTGGAGAATGTGGCAAAGCTTTACCTATCTTACACCTTACTACACATAA
 GAGGATTCATACTGGTGAAGAACCTACAAATGTGAAGAATGTGGCAAAGCTTTTAGTGTATTTCAACC
 CTTACTAAACATAAGATAATTCATACTGAAGAGAAACCTACAAATGTGAAGAATGTGGCAAAGCTTTTA
 ACCGGTCTCACACCTTACTAATCATAAGTAATTCATACTGGAGAGAAACCTACAAATGTGAAGAATG
 TGGTAAAGCCTTTACCAAGTCTCAACTCTTACTTATCATAAGGTAATTCATACTGGAAAGAAACCTAC
 AAATGTGAAGAATGTGGTAAAGCCTTTAGTATATTCTCAATCCTTACTAAACATAAAGTAATTCATACTG
 AAGACAAACCTACAAATGTGAAGAATGTGGCAAACCTTTTAACTACTCCTCAAATTTTACTAATCATAA
 AAAAATTCATACTGGAGAGAAACCTATAAGTGTGAAGAATGTGGCAAAGCTTTATTCTGCTCTCAT
 CTTACTACACATAAGATAATTCATACTGGAGAGAAACCTACAAATGTGAAGAATGTGGCAAAGCTTTTA
 ACCAGTCTCAACCTTATGAAACATAAGATAATTCATACTGGAGAGAAACCTACAAATGTGAAGAATG
 TGGCAAAGCCTTAAACAGTCCCAACCTTACTAAACATAAGAGAATTCATACCAAGAGAAACCTAC
 AAATGTAAA

ACGCGTACGCGGCCGCTCGAGCAGAAACTCATCTCAGAAGAGGATCTGGCAGCAAATGATATCCTGGATT
 ACAAGGATGACGACGATAAGGTTTAA

Protein Sequence:

>RC216390 representing NM_021269
 Red=Cloning site Green=Tags(s)

MGPLTFMDVAIEFSL EEWQCLDTAQQNL YRNVMLENYRNLVFLGI AVSNLDLITCLEQGKEPWNMRHEM
 AAKPPAMCSHF AKDLRPEQYIKNSFQQVILRRYKGCYQK GKCSVDEHKLHKGGHKLNRVTTTQSKIV
 QCDKYVKVFHKYSNAKRHKIRHTGKNPFKCECGKSF CMLSQLTQHEIIHTGEKPYKCEECGKAFKSSN
 LTNHKIIHTGEKPYKCEECGKAFNQSSLTRHKIIHTGEKLYKCEECGKAFNRSSNLTKHKIVHTGEKPY
 KCEECGKAFKQSSNL TNHKKIHTGEKPYKCECGKAFTLSSHL TTHKRIHTGEKPYKCEECGKAFSVFST
 LTKHKIIHTEEKPYKCEECGKAFNRSSHL TNHKVIHTGEKPYKCEECGKAFKSSSTLYHKVIHTGKKPY
 KCEECGKAFSIF SILTKHKVIHTEDKPYKCEECGKTFNYSSNFTNHKKIHTGEKPYKCEECGKSFILSSH
 LTTHKIIHTGEKPYKCECGKAFNQSSLMKHKIIHTGEKPYKCEECGKAFNQSPNLTKHKRIHTKEKPY
 KCK

TRTRPLEQKLISEEDLAANDILDYKDDDDKV

Chromatograms:

https://cdn.origene.com/chromatograms/mk8017_e05.zip

Restriction Sites:

Sgfl-Mlul

Cloning Scheme:


ACCN: NM_021269

ORF Size: 1689 bp

OTI Disclaimer: The molecular sequence of this clone aligns with the gene accession number as a point of reference only. However, individual transcript sequences of the same gene can differ through naturally occurring variations (e.g. polymorphisms), each with its own valid existence. This clone is substantially in agreement with the reference, but a complete review of all prevailing variants is recommended prior to use. [More info](#)

OTI Annotation: This clone was engineered to express the complete ORF with an expression tag. Expression varies depending on the nature of the gene.

Components: The ORF clone is ion-exchange column purified and shipped in a 2D barcoded Matrix tube containing 10ug of transfection-ready, dried plasmid DNA (reconstitute with 100 ul of water).

Reconstitution Method:

1. Centrifuge at 5,000xg for 5min.
2. Carefully open the tube and add 100ul of sterile water to dissolve the DNA.
3. Close the tube and incubate for 10 minutes at room temperature.
4. Briefly vortex the tube and then do a quick spin (less than 5000xg) to concentrate the liquid at the bottom.
5. Store the suspended plasmid at -20°C. The DNA is stable for at least one year from date of shipping when stored at -20°C.

RefSeq: [NM_021269.3](#)

RefSeq Size: 4006 bp

RefSeq ORF: 1692 bp

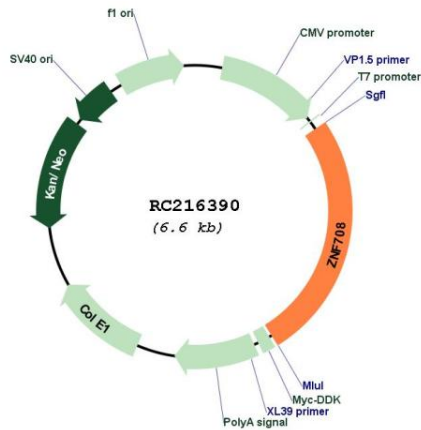
Locus ID: 7562

Cytogenetics: 19p12

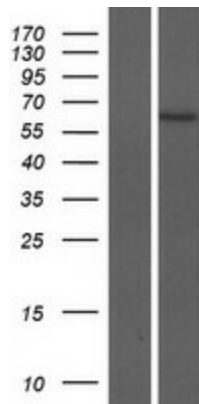
MW: 64.6 kDa

Gene Summary: May be involved in transcriptional regulation.[UniProtKB/Swiss-Prot Function]

Product images:



Circular map for RC216390



Western blot validation of overexpression lysate (Cat# [LY411981]) using anti-DDK antibody (Cat# [TA50011-100]). Left: Cell lysates from untransfected HEK293T cells; Right: Cell lysates from HEK293T cells transfected with RC216390 using transfection reagent MegaTran 2.0 (Cat# [TT210002]).