

Product datasheet for RC216387

Pit1 (POU1F1) (NM_000306) Human Tagged ORF Clone

Product data:

Product Type:	Expression Plasmids
Product Name:	Pit1 (POU1F1) (NM_000306) Human Tagged ORF Clone
Tag:	Myc-DDK
Symbol:	Pit1
Synonyms:	CPHD1; GHF-1; Pit-1; PIT1; POU1F1a
Mammalian Cell Selection:	Neomycin
Vector:	pCMV6-Entry (PS100001)
E. coli Selection:	Kanamycin (25 ug/mL)
ORF Nucleotide Sequence:	>RC216387 representing NM_000306 Red=Cloning site Blue=ORF Green=Tags(s)

TTTTGTAATACGACTCACTATAGGGCGCCGGGAATTCGTCGACTGGATCCGGTACCGAGGAGATCTGCC
GCC**CGATCGCC**

ATGAGTTGCCAAGCTTTTACTTCGGCTGATACCTTTATACCTCTGAATTCTGACGCCTCTGCAACTCTGC
CTCTGATAATGCATCACAGTGCTGCCGAGTGTCTACCAGTCTCCAACCATGCCACCAATGTGATGTCTAC
AGCAACAGGACTTCATTATTCTGTTCTTCTCCTGTCTATTGAAACCAGCCATCAACCTATGGAGTGATG
GCAGGTAGTTAACCCCTTGCTTTATAAATTTCTGACCACACCTTGAGTCATGGATTTCTCCTATAC
ACCAGCCTCTTCTGGCAGAGGACCCACAGCTGCTGATTTCAAGCAGAACTCAGGCGGAAAAGTAAATT
GGTGGAAGAGCCAATAGACATGGATTCTCCAGAAATCAGAGAAGTTGAAAAGTTTGCCAATGAATTTAAA
GTGAGACGAATTAATAGGATACACCCAGACAAATGTTGGGGAGGCCCTGGCAGCTGTGCATGGCTCTG
AATTCAGTCAAACAACAATCTGCCGATTTGAAAATCTGCAGCTCAGCTTTAAAAATGCATGCAAAGTAA
AGCAATATTATCCAAATGGCTGGAGGAAGCTGAGCAAGTAGGAGCTTTGTACAATGAAAAAGTGGGAGCA
AATGAAAGGAAAAGAAAACGAAGAACAATAAGCATTGCTGCTAAAGATGCTCTGGAGAGACACTTTG
GAGAACAGAATAAACCTTCTTCTCAAGAGATCATGAGGATGGCTGAAGAAGTGAATCTGGAGAAAAGT
AGTAAGAGTTTGGTTTTGCAACCGGAGGCAGAGAGAAAAACGGGTGAAAACAAGTCTGAATCAGAGTTTA
TTTTCTATTCTAAGAACATCTTGAGTGCAGA

ACGCGTACGCGGCCGCTCGAGCAGAAAACATCTCAGAAGAGGATCTGGCAGCAAATGATATCCTGGATT
ACAAGGATGACGACGATAAGGTTTAA



[View online »](#)

Protein Sequence: >RC216387 representing NM_000306
Red=Cloning site Green=Tags(s)

MSCQAFTSADTFIPLNSDASATLPLIMHHSAAECLPVSNHATNMSTATGLHYSVPSCHYGNQPSTYGV
 AGSLTPCLYKFPDHTLSHGFPPIHQPLLAEDPTAADFKQELRRKSKLVEEPIDMSPEIRELEKFA
 NEFK VRRRIKLYGTQTNVGEALAAVHGSEFSQTTICRFENLQLSFKNACKLKAILSKWLEEAQV
 GALYNEKVGA NERKRKRRTTISIAAKDALERHFGEQNKPSQEI MRMAEELNLEKEVVRVWF
 CNRRRQREKRVKTSLNQSL FSISKEHLECR

TRTRPLEQKLISEEDLAANDILDYKDDDDKV

Chromatograms: https://cdn.origene.com/chromatograms/ja1267_c06.zip

Restriction Sites: SgfI-MluI

Cloning Scheme:



ACCN: NM_000306

ORF Size: 873 bp

OTI Disclaimer: The molecular sequence of this clone aligns with the gene accession number as a point of reference only. However, individual transcript sequences of the same gene can differ through naturally occurring variations (e.g. polymorphisms), each with its own valid existence. This clone is substantially in agreement with the reference, but a complete review of all prevailing variants is recommended prior to use. [More info](#)

OTI Annotation: This clone was engineered to express the complete ORF with an expression tag. Expression varies depending on the nature of the gene.

Components: The ORF clone is ion-exchange column purified and shipped in a 2D barcoded Matrix tube containing 10ug of transfection-ready, dried plasmid DNA (reconstitute with 100 ul of water).

Reconstitution Method:

1. Centrifuge at 5,000xg for 5min.
2. Carefully open the tube and add 100ul of sterile water to dissolve the DNA.
3. Close the tube and incubate for 10 minutes at room temperature.
4. Briefly vortex the tube and then do a quick spin (less than 5000xg) to concentrate the liquid at the bottom.
5. Store the suspended plasmid at -20°C. The DNA is stable for at least one year from date of shipping when stored at -20°C.

RefSeq: [NM_000306.4](#)

RefSeq Size: 1262 bp

RefSeq ORF: 876 bp

Locus ID: 5449

UniProt ID: [P28069](#)

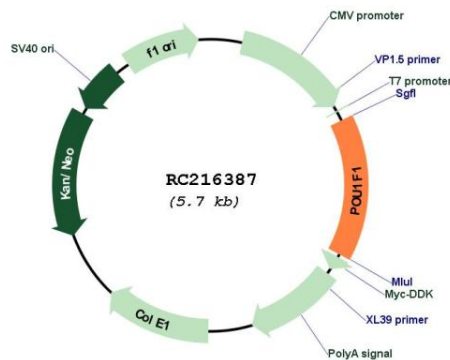
Cytogenetics: 3p11.2

Protein Families: Druggable Genome, Transcription Factors

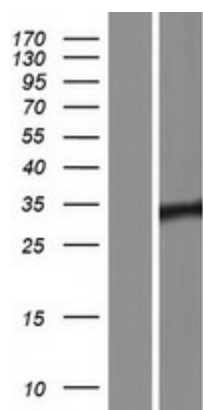
MW: 32.7 kDa

Gene Summary: This gene encodes a member of the POU family of transcription factors that regulate mammalian development. The protein regulates expression of several genes involved in pituitary development and hormone expression. Mutations in this genes result in combined pituitary hormone deficiency. Multiple transcript variants encoding different isoforms have been found for this gene. [provided by RefSeq, Jul 2008]

Product images:



Circular map for RC216387



Western blot validation of overexpression lysate (Cat# [LY424805]) using anti-DDK antibody (Cat# [TA50011-100]). Left: Cell lysates from untransfected HEK293T cells; Right: Cell lysates from HEK293T cells transfected with RC216387 using transfection reagent MegaTran 2.0 (Cat# [TT210002]).