

## Product datasheet for **RC216382**

### ZNF286 (ZNF286A) (NM\_020652) Human Tagged ORF Clone

#### Product data:

Product Type:	Expression Plasmids
Product Name:	ZNF286 (ZNF286A) (NM_020652) Human Tagged ORF Clone
Tag:	Myc-DDK
Symbol:	ZNF286
Synonyms:	ZNF286
Mammalian Cell Selection:	Neomycin
Vector:	pCMV6-Entry (PS100001)
E. coli Selection:	Kanamycin (25 ug/mL)



[View online »](#)

**ORF Nucleotide Sequence:**

>RC216382 representing NM\_020652  
 Red=Cloning site Blue=ORF Green=Tags(s)

TTTTGTAATACGACTCACTATAGGGCGGCCGGAATTCGTCGACTGGATCCGGTACCGAGGAGATCTGCC  
 GCC**CGGATCGCC**

ATGGAGACAGATTTGGCTGAAATGCCTGAGAAAGGAGCTCTGTCTTCCCAGGATTCTCCCCATTTCCAAG  
 AGAAGAGCACAGAAGAGGGAGAAGTGGCTGCTCTGCGCCTCACGGCCAGATCCCAGGAAACAGTGACATT  
 CAAGGATGTGGCCATGGACTTTACACCAGAGGAGTGGGGGAAGCTGGATCCTGCACAAAGGGATGTGATG  
 CTGGAGAACTATAGGAACCTAGTCTCACTTTGGCTTCCAGTTTCCAAACCTGAGAGCTACAACCTGGAGA  
 ATGAAAAAGAACCATTGAAGCTTGAGAGAAAAGCCCCAAAAGCAGCTATTCAGACATGGAGACTAGACC  
 ACAGAGCAAGGATTCAACTTCAGTGAAGATTTTTCCAAAGCAGAATCATGCAAAGTTGCAATAATAGAC  
 AGACTGACACGGAATAGTGTCTATGACTCTAAGTGGAAAGCAGCCCTGAATGTGAAAATGGTTAGAGA  
 ATCAGCAAGGAAATCAGGAGAGACATTTGAGAGAAATGTTCACTCACATGAATTCCTCTCTGAGGAAAC  
 AGACCATAAGCATGATGTATACTGGAAAAGCTTCAATCAGAAATCTGTCCTTATCACTGAAGACAGAGTT  
 CCCAAAGGATCTTATGCCTTCCATACACTTGAAAAAGCTTGAAACAAAAATCAAACCTAATGAAAAAGC  
 AGAGAACTTATAAAGAGAAAAAACCTCATAAATGTAATGATTGTGGTGAACCTTTCACCTACCATTCACT  
 GCTTATTCGACACCAGAGAGTCCATACTGGAGAGAAAACCTATACCTGCAATGAATGTGGGAAATCTTTT  
 AGCCACAGAGCTAATTTAACTAAACACCAGAGAACTCATACTAGAATTCTCTTTGAATGCAGTGAATGCA  
 AGAAAACCTTCACAGAAAGCTCATCCCTTGCAACACATCAGAGAATTCACGTTGGAGAGAGACCTTATGA  
 ATGCAATGAATGTGGGAAAGTTTTAATCGAAGTACACATCTTGTGCAGCATCAGTTGATTACTACTGGA  
 GTGAAGCCTTATGAATGTAATGAATGTGATAAAGCTTTTATTTCATCAGCACTCATTAAACATCAA  
 GAACCTACTGGAGAGAAAACCTTATAAATGTCAAGAATGTGGGAAAGCCTTTAGCCATTTGCTCATCCCT  
 AACTAAGCATCAGAGAGTTCATACTGGAGAAAAGCCATATGAATGCAGTGAATGTGGAAAACTTTTAGT  
 CAGAGCACACATCTTGTCAACATCAGAGAATTCACACTGGAGAGAAAACCTATGAGTGAATGAATGTG  
 GAAAAACCTTCAGCCGAGCTCCAATTTTGCTAAACATCAAAGAATTCATATTGGAAAGAAAACCGTACAA  
 ATGTAGCGAGTGTGGAAAAGCCTTCATTATTCATCAGCTCTTATTCAACATCAGAGAATTCATACCGGA  
 GAGAAAACCTTTAGATGTAATGAGTGTGGGAAAAGCTTTAAGTGCAGTTCATCTCTCATCAGACATCAA  
 GAGTTCACACTGAAGAGCAACCC

**ACGCGT**ACGCGGCCGCTCGAGCAGAAACTCATCTCAGAAGAGGATCTGGCAGCAAATGATATCCTGGATT  
 ACAAGGATGACGACGATAAGGTTTAA

**Protein Sequence:**

>RC216382 representing NM\_020652  
 Red=Cloning site Green=Tags(s)

METDLAEMPEK GALSSQDSPHFQEKSTEEGEVAALRLTARSQETVTFKDVAMDFPPEEWGKLDPAQRDVM  
 LENYRNLVSLWLPVSKPESYNLENGKEPLKLERKAPKSSYSDMETRPQSKDSTSVQDFSKAESCKVAIID  
 RLTRNSVYDSNLEAALECEWLENQGNQERHLREMFTHMNSLSEETHDKHDVYWKSFNQKSVLITEDRV  
 PKGSYAFHTLEKSLKQKSNLMKKQRTYKEKPKHCNDGELFTYHVLIRHQRVHTGKPYTCNECGKSF  
 SHRANLTKHQRTHTRILFECSECKTFTESSLATHQRIHVGERPYECNECGKGFNRSTHLVQHQLIHTG  
 VKPYECNECDKAFIHSSALIKHQRTHTGKPYKQCEGKAFSHCSSLTKHQRVHTGKPYECSECGKTF  
 QSTHLVQHRIHTGKPYECNECGKTFSRSSNF AKHQRIHIGKKPYKCEGKAFIHSSALIQHRTHTG  
 EKPFRCNECGKSFKCSSLIRHQRVHTEEQP

**TRTRPLEQKLI**SEEDLAANDILDYKDDDDKV

**Chromatograms:**

[https://cdn.origene.com/chromatograms/mk6484\\_f03.zip](https://cdn.origene.com/chromatograms/mk6484_f03.zip)

**Restriction Sites:**

Sgfl-MluI

**Cloning Scheme:**


**ACCN:** NM\_020652

**ORF Size:** 1563 bp

**OTI Disclaimer:** The molecular sequence of this clone aligns with the gene accession number as a point of reference only. However, individual transcript sequences of the same gene can differ through naturally occurring variations (e.g. polymorphisms), each with its own valid existence. This clone is substantially in agreement with the reference, but a complete review of all prevailing variants is recommended prior to use. [More info](#)

**OTI Annotation:** This clone was engineered to express the complete ORF with an expression tag. Expression varies depending on the nature of the gene.

**Components:** The ORF clone is ion-exchange column purified and shipped in a 2D barcoded Matrix tube containing 10ug of transfection-ready, dried plasmid DNA (reconstitute with 100 ul of water).

- Reconstitution Method:**
1. Centrifuge at 5,000xg for 5min.
  2. Carefully open the tube and add 100ul of sterile water to dissolve the DNA.
  3. Close the tube and incubate for 10 minutes at room temperature.
  4. Briefly vortex the tube and then do a quick spin (less than 5000xg) to concentrate the liquid at the bottom.
  5. Store the suspended plasmid at -20°C. The DNA is stable for at least one year from date of shipping when stored at -20°C.

**RefSeq:** [NM\\_020652.3](#)

**RefSeq Size:** 2515 bp

**RefSeq ORF:** 1566 bp

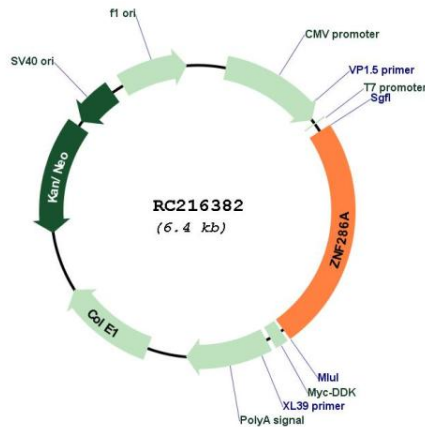
**Locus ID:** 57335

**UniProt ID:** [Q9HBT8](#)

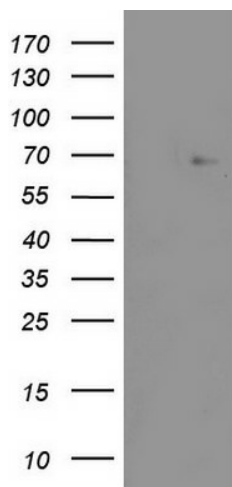
**Cytogenetics:** 17p12

**Domains:** KRAB, zf-C2H2  
**Protein Families:** Transcription Factors  
**MW:** 60 kDa  
**Gene Summary:** May be involved in transcriptional regulation.[UniProtKB/Swiss-Prot Function]

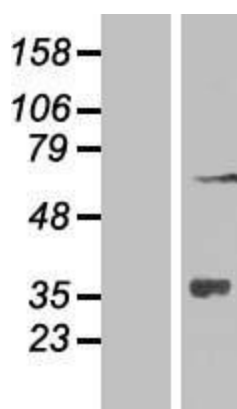
**Product images:**



Circular map for RC216382



HEK293T cells were transfected with the pCMV6-ENTRY control (Cat# [PS100001], Left lane) or pCMV6-ENTRY ZNF286A (Cat# RC216382, Right lane) cDNA for 48 hrs and lysed. Equivalent amounts of cell lysates (5 ug per lane) were separated by SDS-PAGE and immunoblotted with anti-ZNF286A (Cat# [TA803480]). Positive lysates [LY412314] (100ug) and [LC412314] (20ug) can be purchased separately from OriGene.



Western blot validation of overexpression lysate (Cat# [LY427281]) using anti-DDK antibody (Cat# [TA50011-100]). Left: Cell lysates from untransfected HEK293T cells; Right: Cell lysates from HEK293T cells transfected with [RC225894] using transfection reagent MegaTran 2.0 (Cat# [TT210002]).