

Product datasheet for **RC216379**

DCAF12L2 (NM_001013628) Human Tagged ORF Clone

Product data:

| | |
|---------------------------|--|
| Product Type: | Expression Plasmids |
| Product Name: | DCAF12L2 (NM_001013628) Human Tagged ORF Clone |
| Tag: | Myc-DDK |
| Symbol: | DCAF12L2 |
| Synonyms: | WDR40C |
| Mammalian Cell Selection: | Neomycin |
| Vector: | pCMV6-Entry (PS100001) |
| E. coli Selection: | Kanamycin (25 ug/mL) |



[View online »](#)

ORF Nucleotide Sequence:

>RC216379 representing NM_001013628
 Red=Cloning site Blue=ORF Green=Tags(s)

TTTTGTAATACGACTCACTATAGGGCGGCCGGGAATTCGTCGACTGGATCCGGTACCGAGGAGATCTGCC
 GCC**CGGATCGCC**

ATGGCCCAGCAGCAAACAGGTAGCAGGAAACGGAAAGCGCCCGGGTTCGAGGCGGGAGCCGGGAGCTCGT
 CGTCGCAGGGTTTAGCGCGGGCGGACGGAGAGGGCCTCTGCTACCCAAGAAGCAGAAGCGGCCGGCGAC
 CGGTGCGAGGCTGGTGCCTATCTGAAGGGCCGGGAGGTAGGAGCGCGGGGCCAGCCGGGCTCCAGGGC
 TTCAGGGCGAGCTGCGGGGCTACGCCCTCAGAGGCTGCCGAGCTGCTGACGGAGCGCCAGCTGGACC
 TGGGCACCCTCAACAAGGTGTTCCGCTCACAGTGGCTGAACGCCAGGCAGGTGGTGTGCGGCACCAAGTG
 TAATACGCTGTTTGGTGGACGTGCAGTCAGGCCACATCACGCGCATCCCCCTCATGCGGGACAAGGAG
 GCCGGGCTGGCCAGGCCACCAGGGCTGCGGCATCCATGCCATCGAGCTGAATCCCTCCAAGACGCTTC
 TGGCCACCGCGCGGAAAACCCCAACAGCCTGGCCATCTACCAGCTGCCACCCTGGACCCCTGTGCCT
 GGGCGACCGCCATGGCCACAAGGACTGGATCTTCGCAGTCGCTGGCTGAGTGACACCGTAGCTGTGAGC
 GGTCCCAGCGACGCGACCGTGGCTCTGTGGCGGATGGACCCAGACATGTTAATGGCAGCATTGCCTGGC
 ACAGCGAGGTGGGTCTCCAGTATATGCCACATCCGTCCGAGGGATGTGGAGGCCATCCCAGGGCCAG
 CACCAACCCAGCAACCGCAAGGTACGGGCCCTGGCCTTCAGCGGCAAGAACCAGGAGCTGGGAGCGGTG
 TCCTTGGACGGCTACTTCCACCTGTGAAAGCCCGGAGCACACTACAGGCTCCTGTCCATCAGGCTGC
 CCTACTGCCGAGAGAATGTGTGCTGACCTACTGTGATGAGTTGTCCCTGTACGCTGTGGGCTCTCAGTC
 CCACGTCTCCTTCTGGATCCGCGCCAGCGCCAGCAGAACATCCGGCCCTGTGCTCTCGAGAGGGTGGC
 ACAGGCGTGGGTCGCTGAGCTTCTACCAGCACATCATCACTGTGGCACCGGCCATGGTCCCTGCTCT
 TCTATGACATCCGCGCCAGAAGTTCTTGAGGAGAGGGCCTCTCCAGCCTGGACTCCATGCCGGGGCC
 CGCAGGGAGGAAGCTCAAGCTTGCTGCGGCAGAGGCTGGCTCAACCAAGATGACGTCTGGGTGAAGTAC
 TTTGGTGGCATGGGAGAGTTCCCAATGCCTCTACACCCACTGCTACAAGTGGCCGGAGATGAAGCTCT
 TTGTGGCTGGGGGCTCTCCCTCAGGCCTCCATGGGAACACGAGGCTCTGGAGT

AG**CGGACCG**ACGCGTACGCGGCCGCTCGAGCAGAACTCATCTCAGAAGAGGATCTGGCAGCAAATGATATCC
 TGGATTACAAGGATGACGACGATAAGGTTAA

Protein Sequence:

>RC216379 representing NM_001013628
 Red=Cloning site Green=Tags(s)

MAQQQTGSRKRKAPAVEAGAGSSSSQGLAADGEGPLLPKKQKRPATRRRLVHYLKGREVGARGPAGLQG
 FEGELRGYAVQRLPELLTERQLDLGTLNKVFASQWLNARQVVCGTKCNTLFVVDVQSGHITRIPLMRDKE
 AGLAQAHQGGCIHAIELNPSKTLATGGENPNSLAIYQLPTLDPLCLGDRHGHKDWIFAVAWLSDTVAVS
 GSRDGTVALWRMDPDMFNFSIAWHSEVGLPVYAHIRPRDVEAIPRASTNPSNRKVRALAFSGKNQELGAV
 SLDGYFHLWKARSTLSRLLSIRLPYCRENVCLTYCDEL SLYAVGSQSHVSFLDPRQRQNI RPLCSREGG
 TGVRSLSFYQHIIITVGTGHGSLLFYDIRAQKFLEERASSLDSMPGAPGRKLLKACGRGWL NQDDVWVNY
 FGGMGFPNALYTHCYNWPEMKLFVAGGPLPSGLHGN YAGLWS

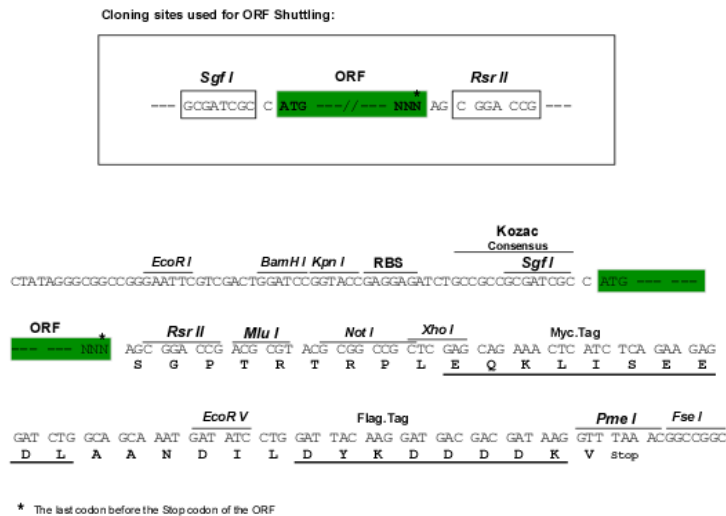
SGPTRRRLEQKLI SEEDLAANDILDYKDDDDKV

Chromatograms:

https://cdn.origene.com/chromatograms/mk8017_e09.zip

Restriction Sites:

Sgfl-RsrII

Cloning Scheme:


ACCN: NM_001013628

ORF Size: 1389 bp

OTI Disclaimer: The molecular sequence of this clone aligns with the gene accession number as a point of reference only. However, individual transcript sequences of the same gene can differ through naturally occurring variations (e.g. polymorphisms), each with its own valid existence. This clone is substantially in agreement with the reference, but a complete review of all prevailing variants is recommended prior to use. [More info](#)

OTI Annotation: This clone was engineered to express the complete ORF with an expression tag. Expression varies depending on the nature of the gene.

Components: The ORF clone is ion-exchange column purified and shipped in a 2D barcoded Matrix tube containing 10ug of transfection-ready, dried plasmid DNA (reconstitute with 100 ul of water).

Reconstitution Method:

1. Centrifuge at 5,000xg for 5min.
2. Carefully open the tube and add 100ul of sterile water to dissolve the DNA.
3. Close the tube and incubate for 10 minutes at room temperature.
4. Briefly vortex the tube and then do a quick spin (less than 5000xg) to concentrate the liquid at the bottom.
5. Store the suspended plasmid at -20°C. The DNA is stable for at least one year from date of shipping when stored at -20°C.

RefSeq: [NM_001013628.3](#)

RefSeq Size: 1421 bp

RefSeq ORF: 1392 bp

Locus ID: 340578

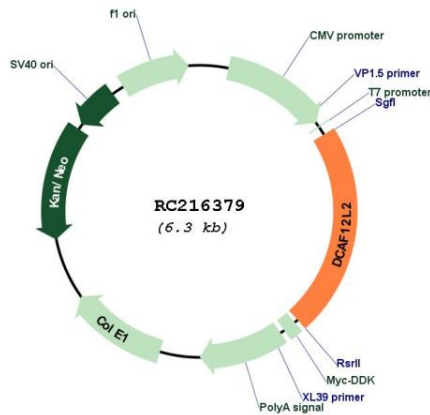
UniProt ID: [Q5VW00](#)

Cytogenetics: Xq25

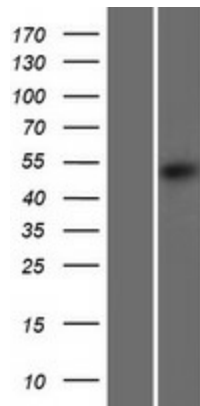
MW: 50.6 kDa

Gene Summary: This gene encodes a member of the WD repeat protein family. WD repeats are minimally conserved regions of approximately 40 amino acids typically bracketed by Gly-His and Trp-Asp (GH-WD), which may facilitate formation of heterotrimeric or multi-protein complexes. Members of this family are involved in a variety of cellular processes, including cell cycle progression, signal transduction, apoptosis, and gene regulation. This gene appears to represent an intronless retrocopy of a related multi-exon gene located on chromosome 9. However, the CDS of this intronless gene remains intact, it is conserved in other mammalian species, it is known to be transcribed, and it is therefore thought to encode a functional protein. [provided by RefSeq, May 2010]

Product images:



Circular map for RC216379



Western blot validation of overexpression lysate (Cat# [LY422990]) using anti-DDK antibody (Cat# [TA50011-100]). Left: Cell lysates from untransfected HEK293T cells; Right: Cell lysates from HEK293T cells transfected with RC216379 using transfection reagent MegaTran 2.0 (Cat# [TT210002]).