

Product datasheet for **RC216355**

RPL30 (NM_000989) Human Tagged ORF Clone

Product data:

Product Type: Expression Plasmids
Product Name: RPL30 (NM_000989) Human Tagged ORF Clone
Tag: Myc-DDK
Symbol: RPL30
Synonyms: L30
Mammalian Cell Selection: Neomycin
Vector: pCMV6-Entry (PS100001)
E. coli Selection: Kanamycin (25 ug/mL)
ORF Nucleotide Sequence: >RC216355 representing NM_000989
Red=Cloning site Blue=ORF Green=Tags(s)

TTTTGTAATACGACTCACTATAGGGCGGCCGGAATTCGTCGACTGGATCCGGTACCGAGGAGATCTGCC
GCC**CGATCGCC**

ATGGTGGCCGAAAGAAGACGAAAAAGTCGCTGGAGTCGATCAACTCTAGGCTCCAACCTCGTTATGAAA
GTGGGAAGTACGTCCTGGGTACAAGCAGACTCTGAAGATGATCAGACAAGGCAAAGCGAAATTGGTCAT
TCTCGCTAACAACTGCCAGCTTTGAGGAAATCTGAAATAGAGTACTATGCTATGTTGGCTAAAACCTGGT
GTCCATCACTACAGTGGCAATAATTGAACTGGGCACAGCATGCGGAAAATACTACAGAGTGTGCACAC
TGGCTATCATTGATCCAGGTGACTCTGACATCATTAGAAGCATGCCAGAACAGACTGGTGAAAAG

ACGCGTACGCGGCCGCTCGAGCAGAAACTCATCTCAGAAGAGGATCTGGCAGCAAATGATATCCTGGATT
ACAAGGATGACGACGATAAGGTTTAA

Protein Sequence: >RC216355 representing NM_000989
Red=Cloning site Green=Tags(s)
MVAAKKTKKSLESINSRLQLVMKSGKYVLGYKQTLKMIROGKAKLVILANNCPALRKSEIEYYAMLAKTG
VHHYSGNNIELGTACGKYRVCTLAIIDPGSDIIRSMPEQTGEK

TRTRPLEQKLISEEDLAANDILDYKDDDDKV

Chromatograms: https://cdn.origene.com/chromatograms/mk6036_a08.zip

Restriction Sites: SgfI-MluI



[View online »](#)

UniProt ID: [P62888](#)

Cytogenetics: 8q22.2

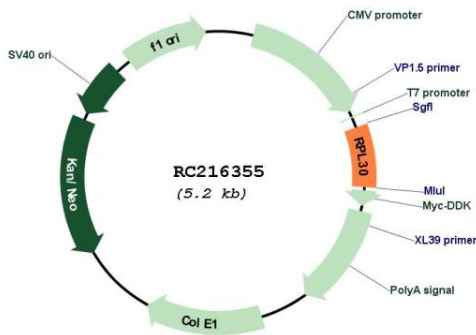
Domains: Ribosomal_L7Ae

Protein Pathways: Ribosome

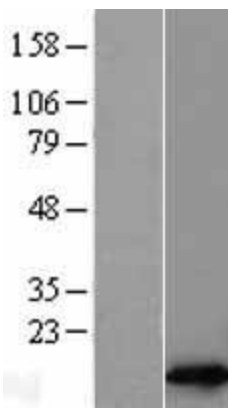
MW: 12.6 kDa

Gene Summary: Ribosomes, the organelles that catalyze protein synthesis, consist of a small 40S subunit and a large 60S subunit. Together these subunits are composed of 4 RNA species and approximately 80 structurally distinct proteins. This gene encodes a ribosomal protein that is a component of the 60S subunit. The protein belongs to the L30E family of ribosomal proteins. It is located in the cytoplasm. This gene is co-transcribed with the U72 small nucleolar RNA gene, which is located in its fourth intron. As is typical for genes encoding ribosomal proteins, there are multiple processed pseudogenes of this gene dispersed through the genome. [provided by RefSeq, Jul 2008]

Product images:



Circular map for RC216355



Western blot validation of overexpression lysate (Cat# [LY400356]) using anti-DDK antibody (Cat# [TA50011-100]). Left: Cell lysates from untransfected HEK293T cells; Right: Cell lysates from HEK293T cells transfected with RC216355 using transfection reagent MegaTran 2.0 (Cat# [TT210002]).