

Product datasheet for **RC216354**

SLC8A2 (NM_015063) Human Tagged ORF Clone

Product data:

| | |
|---------------------------|---|
| Product Type: | Expression Plasmids |
| Product Name: | SLC8A2 (NM_015063) Human Tagged ORF Clone |
| Tag: | Myc-DDK |
| Symbol: | SLC8A2 |
| Synonyms: | NCX2 |
| Mammalian Cell Selection: | Neomycin |
| Vector: | pCMV6-Entry (PS100001) |
| E. coli Selection: | Kanamycin (25 ug/mL) |



[View online »](#)

ORF Nucleotide
Sequence:

>RC216354 representing NM_015063
 Red=Cloning site Blue=ORF Green=Tags(s)

TTTTGTAATACGACTCACTATAGGGCGGCCGGAATTCGTCGACTGGATCCGGTACCGAGGAGATCTGCC
 GCCCGGATCGCC

ATGGCTCCCTGGCCTTGGTGGGGTCACTCCTCTGGCGGCTCCCCATGCTCGGGGAGCCACCC
 CAACCCCTCCCTGCCGCTCCCCGGCAATGACAGCGACACCAGCACAGGGGGCTGCCAGGGTCTTA
 CCGCTGCCAGCCGGGGTGTGTGCCGTGTGGAGCCCGACGACCCGTCGCTGGGTGACAAGCGGCA
 CGGGCAGTGGTGTACTTTGTGGCCATGGTCTACATGTTTCTGGAGTGTCCATCATCGCCGACCGTTCA
 TGGCGCCATCGAGGTCATCACGTCAAAGAGAAGGAGATCACCATACCAAGGCCAACGGTGGAGCCAG
 CGTGGGACCGGTCGCATCTGGAATGAGACGGTGTCAAACCTCACGCTCATGGCCCTGGGCTCTCCGCA
 CCTGAGATCCTGTGTGATCATCGAAGTCTGCGGCCACAACCTCCAGGCGGGTGGAGTGGGCCCAGGCA
 CCATCGTGGGCGAGGCTGCCCTTCAACATGTTTGGTGTATCGCCGTGTGCATCTACGTCATCCAGCCGG
 CGAGAGCCGCAAGATCAAGCACCTGAGAGTCTTCTTTGTCAGTGCCTCTTGGAGCATCTTCGCTATGTC
 TGGCTTTATCTCATCCTTGTGTTTTTCCCCCGGTGTGGTCCAGGTGTGGGAGGCGCTGCTGACCCCTGG
 TCTTCTCCCGGTGTGCGTGGTATTTCGCTGGATGGCCGACAAGCGGCTGCTCTTCTACAAGTACGTGTA
 CAAGCGCTACCGACCGACCCACGACGCGGCATCATATAGGCGCCGAGGGGACCCCCGAAGAGCATC
 GAGCTGGACGGCACGTTTCGTGGGCGCCGAGGCCAGGTGAGTGGGCGGCTGGGCCGGGGCCCGCCG
 AGGCGCGGAGCTGGACGCCAGCCGCGCGAGGTATCCAGATCCTCAAGGACCTCAAGCAGAAGCACCC
 GGACAAGGATCTGGAGCAGCTGGTGGGCATCGCCAACTACTACGCGTGTGCACCAGCAGAAGAGCCG
 GCCTTCTACCGCATCCAGGCCACGCGGCTGATGACCGCGCCGGGAACGTGCTGCGCAGACGCGGCGG
 ACGCCTCGCGAGGGCGGCGCCGAGGGCGGAGGACGAAGACGACGCGCCAGCCGATCTT
 CTCGAGCCTAGCCTCTACCACTGCCTGGAGAACTGCGGCTCCGTGCTGTGTCGTCACGTGCCAGGGC
 GCGAGGGCAACAGCACCTTCTACGTGGACTACCGCACTGAGGACGGCTGTGCCAAGCGGGCTCCGACT
 ACGAGTACAGCGAGGGCACGCTGGTGTCAAACCAGGCGAGACGAGAAGGAGTGCATCGGCATCAT
 CGACGACGACATCTTCGAGGAGGACGAGCATTTCTTCGTGCGGCTGTGAACCTGCGCGTGGGCGACGCG
 CAGGGCATGTTTCGAGCCGACGGCGGGCGGCCCAAGGGCGGCTGGTGGCGCCGCTGTGCCACCG
 TCACCATCTGGACGACGACCACGAGGCATCTTCTCCTCCAGGACCGCTGTGCACGTGAGCGAGT
 CATGGGACCGTGGACGTGCGCGTGTGCGCAGCTCGGGCGCGCGCACCGTGCCTTCCCTACCGC
 ACGGTGGACGGCACGGCGCGCGGCGGCGTGCCTACGAGGACGCGTGGGAGAGTGGAGTTTGGCG
 ACGACGAGACCATGAAAACCTTTCAGGTGAAGATAGTTGATGACGAGGAATATGAGAAAAAGGATAATTT
 CTTCAATTGAGCTGGGCCAGCCCCAGTGGCTTAAGCGAGGGATTTCAAGTCTGCTACTCAATCAAGGGAT
 GGGGACAGGAAGCTAACAGCCGAGGAGGAGGAGGCTCGGAGGATAGCAGAGATGGGAAGCCAGTCTTTC
 GGGAGAACTGCCGGTGGAGGTCATCATCGAGGAGTATATGATTTTAAAGAACACGGTGGATAAACTCAT
 CAAGAAAACGAACCTTGGCCTTGGTAATTGGGACCCATTCATGGAGGGAGCAGTTTTTAGAGGCAATTACG
 GTGAGCGCAGGGGACGAGGAGGAGGAGGAGGACGGTCCCGGAGGAGCGGCTGCCGTGCTTTGACT
 ACGTGTGCACTTCTGACGGTGTCTGGAAGGTGCTTTCGCTGTGTGCCCCACCGAGTACTGCCA
 CGGCTGGGCTGCTTTGGTGTCTCCATCCTGGTATCGGCCTGCTCACCGCCCTATTGGGGACCTCGCC
 TCCCACCTCGGCTGCACGTTGGCCTCAAGGACTCTGCAATGCTGTTGTCTTTCGTTGCCCTGGCACCT
 CCATCCCTGACACGTTCCGACGCAAGGTGGCGGCTGCAAGGACAGTGCGCCGACGCGTCCATCGGCAA
 CGTGAACGGCTCCAACGCGGTGAACGTGTTCTTGGCCTGGGCGTGCCTGGTCTGTGGCCGCGTGTAC
 TGGGCGGTGCAGGGCCGCCCTTCGAGGTGCGCACTGGCACGCTGGCCTTCTCCGTACGCTCTTACC
 TCTTCGCTTTCGTGGCATTGCCGTGCTGTACCGCGCGCGCCGACATCGGCGGCGAGTGGGCGG
 CCCGCGGACCAAGCTCGCCACCACCGGCTTCTTGGGCTCTGGCTCTGTACATCTCTTCGCC
 AGCCTGGAGGCTACTGCCACATCCGGGCTTC

AGCGGACCGACGCGTACGCGGCCGCTCGAGCAGAACTCATCTCAGAAGAGGATCTGGCAGCAAATGATATCC
 TGGATTACAAGGATGACGACGATAAGGTTTAA

Protein Sequence: >RC216354 representing NM_015063
 Red=Cloning site Green=Tags(s)

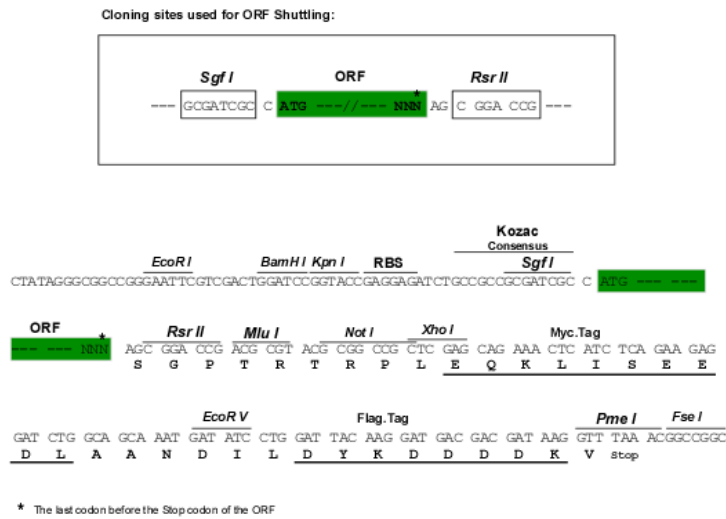
MAPLALVGVTLLLAAPPCSGAATPTPSLPPPPANDSDTSTGGCQGSYRCQPGVLLPVWEPDDPSLGDKAA
 RAVVYFVAMVYMLGVSIIADRFMAAIEVITSKEKEITITKANGETSVGTVRIWNETVSNLTLMALGSSA
 PEILLSVIEVCGHNFQAGELGPGTIVGSAFNMFFVIAVCIYVIPAGESRKIKHLRVFFVTASWSIFAYV
 WLYLILAVFSPGVVQVWEALLTLVFFPVCVVFAMWADKRLLFYKYVYKRYRTDPRSGIIIGAEGDPPKSI
 ELDGTFFVGAEAPGELGGLGPGPAEARELDASRREVIQILKDLKQKHPDKLEQLVGIANYALLHQKSR
 AFYRIQATRLMTGAGNVLRRHAADASRRAAPEGAGEDEDDGASRIFFEPSTYHCLENCVLLSVTCQG
 GEGNSTFYVDYRTEDGSAKAGSDYEYSEGTLVFKPGETQKELRIGIIDDDIFEDEHFFVRLNLRVGD
 QGMFEPDGGPRKGRLLVAPLLATVTILDDDHAGIFSFDRLHVSECMGTVDVVRVSSGARGTVRLPYR
 TVDGTARGGGVHYEDACGELEFGDDETMKTLQVKIVDDEEYKKNDFFIELGQPQLKRGISALLLNQGD
 GDRKLTAEEEEARRIAEMGKPVLGENCRLVIIIEESYDFKNTVDKLIKTNLALVIGTHSWREQFLEAIT
 VSAGDEEEEDGSREERLPSCFDYVMHFLTVFWKVLVACVPPTEYCHGWACFVSVILVIGLLTALIGDLA
 SHFGCTVGLKDSVNAVVFVALGTSIPDTFASKVAALQDQCADASIGNVTGSNAVNVFLGLGVAVSVAAYV
 WAVQGRPFVVRTGLAFSVTLFTVFAFVGIIVLLYRRRPHIGGELGGPRGPKLATTALFLGLWLLYILFA
 SLEAYCHIRGF

SGPTRRRL**EQKLISEEDLA**ANDILDYKDDDDKV

Chromatograms: https://cdn.origene.com/chromatograms/mk8009_b09.zip

Restriction Sites: SgfI-RsrII

Cloning Scheme:

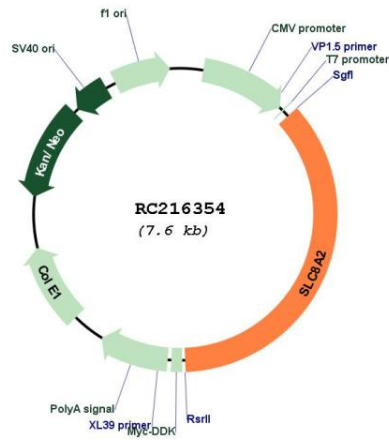


ACCN: NM_015063

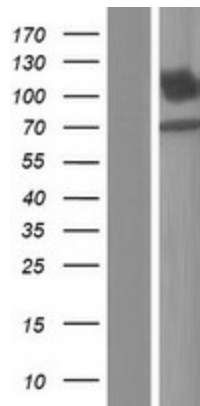
ORF Size: 2763 bp

| | |
|-------------------------------|---|
| OTI Disclaimer: | The molecular sequence of this clone aligns with the gene accession number as a point of reference only. However, individual transcript sequences of the same gene can differ through naturally occurring variations (e.g. polymorphisms), each with its own valid existence. This clone is substantially in agreement with the reference, but a complete review of all prevailing variants is recommended prior to use. More info |
| OTI Annotation: | This clone was engineered to express the complete ORF with an expression tag. Expression varies depending on the nature of the gene. |
| Components: | The ORF clone is ion-exchange column purified and shipped in a 2D barcoded Matrix tube containing 10ug of transfection-ready, dried plasmid DNA (reconstitute with 100 ul of water). |
| Reconstitution Method: | <ol style="list-style-type: none">1. Centrifuge at 5,000xg for 5min.2. Carefully open the tube and add 100ul of sterile water to dissolve the DNA.3. Close the tube and incubate for 10 minutes at room temperature.4. Briefly vortex the tube and then do a quick spin (less than 5000xg) to concentrate the liquid at the bottom.5. Store the suspended plasmid at -20°C. The DNA is stable for at least one year from date of shipping when stored at -20°C. |
| RefSeq: | NM_015063.3 |
| RefSeq Size: | 4282 bp |
| RefSeq ORF: | 2766 bp |
| Locus ID: | 6543 |
| UniProt ID: | Q9UPR5 |
| Cytogenetics: | 19q13.32 |
| Protein Families: | Transmembrane |
| Protein Pathways: | Calcium signaling pathway |
| MW: | 100.2 kDa |
| Gene Summary: | Mediates the electrogenic exchange of Ca(2+) against Na(+) ions across the cell membrane, and thereby contributes to the regulation of cytoplasmic Ca(2+) levels and Ca(2+)-dependent cellular processes. Contributes to cellular Ca(2+) homeostasis in excitable cells. Contributes to the rapid decrease of cytoplasmic Ca(2+) levels back to baseline after neuronal activation, and thereby contributes to modulate synaptic plasticity, learning and memory. Plays a role in regulating urinary Ca(2+) and Na(+) excretion.[UniProtKB/Swiss-Prot Function] |

Product images:



Circular map for RC216354



Western blot validation of overexpression lysate (Cat# [LY414804]) using anti-DDK antibody (Cat# [TA50011-100]). Left: Cell lysates from untransfected HEK293T cells; Right: Cell lysates from HEK293T cells transfected with RC216354 using transfection reagent MegaTran 2.0 (Cat# [TT210002]).