

Product datasheet for **RC216347**

FBXO43 (NM_001029860) Human Tagged ORF Clone

Product data:

Product Type:	Expression Plasmids
Product Name:	FBXO43 (NM_001029860) Human Tagged ORF Clone
Tag:	Myc-DDK
Symbol:	FBXO43
Synonyms:	EMI2; ERP1; FBX43
Mammalian Cell Selection:	Neomycin
Vector:	pCMV6-Entry (PS100001)
E. coli Selection:	Kanamycin (25 ug/mL)



[View online »](#)

**ORF Nucleotide
Sequence:**

>RC216347 representing NM_001029860
 Red=Cloning site Blue=ORF Green=Tags(s)

TTTTGTAATACGACTCACTATAGGGCGGCCGGGAATTCGTCGACTGGATCCGGTACCGAGGAGATCTGCC
 GCC**CGCATCGCC**

ATGAGTTTTAAAGACAAAGATGAGAGAATTTCTGTTTGAAGCCTACGTAACCTTGACATCTAAGAGCT
 CAAGATTTACTGATGAAACAGAGATTTTGAAGATGTCGCAAAGGCACTCAGGTCAAGCTGGCACTGAAGC
 AGGAAATGGGGCGGACTCTCCTCCAATTGTCAACTCCAAGTACTCCACCTTCAGAGATTTTTGTTCCACA
 TCTTCATTTCAAGATAGTGGCTACAATGAGTTAAAATCTGTAGCTTTGATAATATAGATAAAGAATATC
 TTGAAAGAAAGAAAAGGCCAACATTACTCTATGAGCACCTGAAACTTCAGGCCTGGCTTAACACA
 TCCTTTAGAATCTCCCACTCAAAAAAGAAATGTATCTTGCTAGAAAGGAAAAGGATAAAACCCAGAA
 CTTTGTGAAACACCTAAAATCAGTGGGAAAAATGTTTACCTCGCAGAAGTTGAATGTATCTTTTCGCTC
 TTCTAAAAGGGGACTTTGAATCACAAAATAGTTCTTTAGAAAAGTAGTATAAGCCAAGTTATCAACTAGA
 AAAAAATATTCCAAGCAGTGCTTCAGGTTTTCCAGGGCAAATAATTTTAGCCCTTTAGTTACTAGCACT
 TAAAAACAGAAGAAGTGACTTCATGCAGTCAAAAATTGAGGCTTAATTTTTCTCAGCAAAAGACTTCCA
 CAATTGATGATTCAAAAGATGATTGTAGCCTATTTGAAGTTGAATGTATATCTCCAATTCAGGGCAATAA
 TTTTAAAGACTCTATCACACATGACTTTAGTGATAGCAGTTTATGCATTAATGATGAGAATGCATGTCCA
 GAGCTCCTGGGCTCCTCTGTTAGTGGAACTTGTGGAACAGATGAGGACATATTTGTGACTCCGATAA
 GTAATCTTGTGGCAAACATTAGATTTAACGCAAGTCAAATACTTTCTCCTCACCTGAAGTGAGAGGCAG
 TATTTCAACGCCTGAAGACAGTGGTTTTAACTCACTTAGCTTGGAGAAATCAGAAGATCCCTGTCTGAC
 CAGGAGGGTTCTTTCAAGAACTACTGCAGAAACATAAGGGGACTCCCAAAGTTGGGACACCATAAGAA
 AGACAAGACATCTTGAAGGTCGAGAAGACTGTCCACCTTCGGGAACAAAGCTCGCAGTCAGAGACAGA
 AGAGGAAAAGCAGATTGTCCACCCTGACTCTGAAAAAAGAGCAGCAGCTGCTTCTGCCATCTCAGAGGGT
 CAGCTGAGTAGTATGAGAGTGGGGATTTGACCTTTAGCTTAAAGAATTTATCAAAGACCCAGCCTTGC
 AATTGGTACATGAGCTGTTTCATGAAAAGCAAGAGGAAAAGATTACAGGAAAATAGTGGACATGAATTCCT
 AGAGCAAGGGGATGGGGAGAAAAAGCTGTACTGCAGTGTATACTTGCAGGACTGATCGCAAGAAAATG
 GGTATAGAAAACTGGACATCTAACAGAAATAAAATATAGAAATTTAAAGCATATCTTGCTATGGTTT
 TAGAGTCCTTGACCGCAGAGAGCCTATGCAGTGTGGAAAGTAAAGCAGAAATGGCGTGAATTTGTTGT
 TCAAGATAAAAAATGCAAATCGGAGGAGGAAATTTATATCACACAAGTAAAACAGATTCTGAGGGGGCT
 GTATTAATGTGAGGATGCTGCCACTCGGCTCCAGCTTTTAAATCGCTCAGCTTTAAGATCTGTGCAGG
 CACAGGCTAGGATACCTGGTTCTCAGAGAGAGCAAGGGTCAACATTATCTCCCTGGGGAGAAGTTTTGAC
 ACCTCTAGCAAGCTCTTCTGTTACTCACTTAAGTAGTAAACAGGAAGAATATGTTAAGGTTGCCAAAACA
 CTTTTTACTGATGAAGCATTAAACCTTGCCCAAGGTGCCAGTCCCTGTAAAGTACCAGCCATATAAGA
 AAAGGGGACTGTGTAGCCGAACAGCCTGTGGTTTTGACTTTTGTGTGTTATGTCTGTGTGCTTATCATGG
 GTCTGAAGAATGTAGTAGAGGAGCAGCAAAAGCCAAGAAATAGAAAAGATGCTCTCCAGGAAGTGCCAG
 AGTAAGCGGAATTTAAACGCCTC

ACGCGTACGCGGCCGCTCGAGCAGAACTCATCTCAGAAGAGGATCTGGCAGCAAATGATATCCTGGATT
 ACAAGGATGACGACGATAAGGTTTAA

Protein Sequence: >RC216347 representing NM_001029860
Red=Cloning site Green=Tags(s)

```
MSFKDKDERISCLEAYVTLTSKSSRFTDETEILKMSQRHSGQAGTEAGNGADSPPIVNSKYSTFRDFCST
SSFQDSGYNELKSCSFDNIDKEYLGKKEKGPTLLYHPETSGLGLTHPLESPTQKKKILPRKEKDKTPE
LCETPKISGKKCLPRRRLNVSFALLKGFESQNSSLESSISQVINLEKNIPSSASGFSRANFSPPLVTS
LKTEEVTSQSQKLRNLNFSQOKTSTIDDSKDDCSLFEVECI SPIQGNFKDSITHDFSDSSL CINDENACP
ELLGSSVSGTTCGTDEDIFVTPISNLVANIRFNASQILSPSPEVRSISTPEDSGFNLSLEKSEDSLSD
QEGSFQELLQKHKGTPKVGDTIRKTRHLGRSRLSTLREQSSQSETEEEKQIVHPDSEKRAAASAISEG
QLSSDESGLTFSLKNLSKTPALQLVHELFMKSKRKRLQENSGHEFLEQGDGEKIAVLQCILAGLIGKKM
GIEKLDILTELKYRNLKHILAMVLESLTAESLCSVWVSRNWREIVVQDKNANRRRKFYITQLKTDSEGA
VLNVEDAATRLQLLNRSALRSVQAQARIPGSQREQGSTLSPWGEVLTPLASSVTHLSSKQEEYVKVAKT
LFTDEALKPCPRCQSPAKYQPYKKRGLCSRTACGFDFCVLCLCAYHGSEECRGAAPRNRKDALPGSAQ
SKRNLKRL
```

TRTRPLEQKLISEEDLAANDILDYKDDDDKV

Chromatograms: https://cdn.origene.com/chromatograms/mk8017_f03.zip

Restriction Sites: SgfI-MluI

Cloning Scheme:

Cloning sites used for ORF Shuttling:



ACCN: NM_001029860

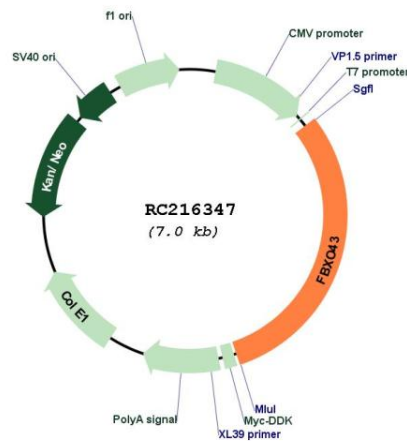
ORF Size: 2124 bp

OTI Disclaimer: The molecular sequence of this clone aligns with the gene accession number as a point of reference only. However, individual transcript sequences of the same gene can differ through naturally occurring variations (e.g. polymorphisms), each with its own valid existence. This clone is substantially in agreement with the reference, but a complete review of all prevailing variants is recommended prior to use. [More info](#)

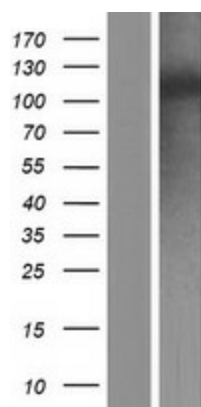
OTI Annotation: This clone was engineered to express the complete ORF with an expression tag. Expression varies depending on the nature of the gene.

Components:	The ORF clone is ion-exchange column purified and shipped in a 2D barcoded Matrix tube containing 10ug of transfection-ready, dried plasmid DNA (reconstitute with 100 ul of water).
Reconstitution Method:	<ol style="list-style-type: none"> 1. Centrifuge at 5,000xg for 5min. 2. Carefully open the tube and add 100ul of sterile water to dissolve the DNA. 3. Close the tube and incubate for 10 minutes at room temperature. 4. Briefly vortex the tube and then do a quick spin (less than 5000xg) to concentrate the liquid at the bottom. 5. Store the suspended plasmid at -20°C. The DNA is stable for at least one year from date of shipping when stored at -20°C.
RefSeq:	<u>NM_001029860.4</u>
RefSeq Size:	3211 bp
RefSeq ORF:	2127 bp
Locus ID:	286151
UniProt ID:	<u>Q4G163</u>
Cytogenetics:	8q22.2
Protein Pathways:	Oocyte meiosis
MW:	78.2 kDa
Gene Summary:	Members of the F-box protein family, such as FBXO43, are characterized by an approximately 40-amino acid F-box motif. SCF complexes, formed by SKP1 (MIM 601434), cullin (see CUL1; MIM 603134), and F-box proteins, act as protein-ubiquitin ligases. F-box proteins interact with SKP1 through the F box, and they interact with ubiquitination targets through other protein interaction domains (Jin et al., 2004 [PubMed 15520277]).[supplied by OMIM, Mar 2008]

Product images:



Circular map for RC216347



Western blot validation of overexpression lysate (Cat# [LY422477]) using anti-DDK antibody (Cat# [TA50011-100]). Left: Cell lysates from untransfected HEK293T cells; Right: Cell lysates from HEK293T cells transfected with RC216347 using transfection reagent MegaTran 2.0 (Cat# [TT210002]).