

## Product datasheet for **RC216339**

### AVL9 (NM\_015060) Human Tagged ORF Clone

#### Product data:

Product Type:	Expression Plasmids
Product Name:	AVL9 (NM_015060) Human Tagged ORF Clone
Tag:	Myc-DDK
Symbol:	AVL9
Synonyms:	KIAA0241
Mammalian Cell Selection:	Neomycin
Vector:	pCMV6-Entry (PS100001)
E. coli Selection:	Kanamycin (25 ug/mL)



[View online »](#)

ORF Nucleotide  
Sequence:

>RC216339 representing NM\_015060  
Red=Cloning site Blue=ORF Green=Tags(s)

TTTTGTAATACGACTCACTATAGGGCGGCCGGAATTCGTCGACTGGATCCGGTACCGAGGAGATCTGCC  
GCCCGCATCGCC

ATGGAGAAGGCCAGGAGAGCGGGGATGGCGTCCCCCGGGGCCCCGTACTGCACATCGTGGTGGTCCGGAT  
TTCACCACAAGAAGGGCTGCCAGGTTGAATTCTCTTACCCGCCCTGATTCCAGGAGATGGACATGACAG  
CCACACTTTACCTGAAGAATGGAAGTATTTGCCCTTCTTGCCTTACCAGATGGCGCACACAACACCAG  
GAAGATACTGTGTTTTTCACTTGCCACCCAGAAATGGAATGGAGCCACAGTATTTGGTATCTCTTGCT  
ATCGACAAATTGAAGCCAAGGCACTGAAAGTAAGGCAAGCAGATATCACCAGAGAGACTGTTCCAGAAAAG  
TGTCTGTGTTCTAAGCAAGCTGCCTCTGTATGGTTTACTTCAAGCAAACTTCAACTCATTACACATGCA  
TATTTTGAAGAGAAGGATTTTCCCAAATTTCTATTCTAAAGGAGCTTTATGAACATATGAATAGTTCCT  
TGGGAGGTGCTTCATTAGAAGGATCCCAAGTATATCTTGGTCTGTACCTCGAGATCTTGCCTTCATTT  
TCGACACAAGGTCTTAATCCTATTTAAGCTAATCTTCTTGAAGGAGGTTCTTTTTTATATTTCTCCA  
GTGAATAAATTGGTGGGTGCACTGATGACTGTGTTATCCCTTTTTCCAGGCATGATTGAACATGGTCTCA  
GTGACTGTTCTCAGTATAGACCCCGAAAAGTATGTCTGAAGATGGTGGGCTTCAGGAAAGTAACCCATG  
TGCAGATGATTTTGTCTGCATCCACTGCTGATGTTTACATACCAACTTGGGAACTATCAGGAAAGTC  
ATGGCAGGAAACCATGGAGAAGTGTGCCATGAAGACTGAGGAGCCTTTGTTCCAAGTGGAAAGACAGCA  
GCAAAGGGCAGGAACCAATGATACCAATCAATATTTGAAACCTCCATCTCGCCCATCTCCAGATTCTTC  
AGAAAGTACTGGGAACTTTGGATCCTAGTGTCTTAGAGGACCCCAACTGAAAGAAAGGGAACAGCTG  
GGATCAGACCAGACAAATTTGTTTCCAAGGACTCTGTCCCCTCAGAGAGTCTTCCAATTACTGTACAAC  
CTCAAGCTAATACGGGACAGGTAGTCTGATACCAGGGCTCATTTCGGGTTTGGAAAGAGGATCAGTATGG  
CATGCCCCCTGGCCATCTTCAAAAGGGATATCTGTGTTTGCCTTACATGGCATTGCAGCAGCATCATCTT  
CTCTCCGATGTCACCGTTCGGGGTTTTGTTGCTGGAGCTACTAACATCCTTTTTCGACAACAGAAACACC  
TCAGTGATGCCATTGTGGAAGTAGAAGAAGCTCTGATCCAGATCCATGATCCAGAACTCAGGAAGCTGCT  
TAACCAACCACTGCAGACCTAAGGTTTCGAGACTACCTAGTGAGGCACGTGACTGAGAATCGGGATGAC  
GTCTTCTAGATGGCACGGGCTGGGAGGGAGGTGACGAATGGATCCGGGCCAGTTTGGGTTCTACATTC  
ATGCCCTGCTGGCTGCCACGCTGCAATTAGACAATGAAAAGATATTATCGGACTATGGGACAACCTTTGT  
TACAGCATGGAAGAATACTCACAACACAGGGTGTGGAACAGCAACAAGCATCCAGCACTTGCAGAAATA  
AATCCAAACCATCCATTTCAAGGCAACTACTCAGTATCAGACATGAAGTTAAGGTTCTCACATTCTGTTT  
AGAATAGTGAACGTGGCAAAAAAATGGAAACGTATGGTCACAACTAGCCGGAATGTTGTACAAACAGG  
AAAAGCTGTTGGCCAGTCAGTTGGAGGAGCTTTTTCCAGTGCAAAGACAGCTATGTCTTATGGCTTTCC  
ACTTTCACCACTTCCACCTCCAAAGTCTCACTGAGCCACCAGATGAGAAGCTT

ACGCGTACGCGGCCGCTCGAGCAGAACTCATCTCAGAAGAGGATCTGGCAGCAATGATATCCTGGATT  
ACAAGGATGACGACGATAAGGTTTAA

**Protein Sequence:** >RC216339 representing NM\_015060

Red=Cloning site Green=Tags(s)

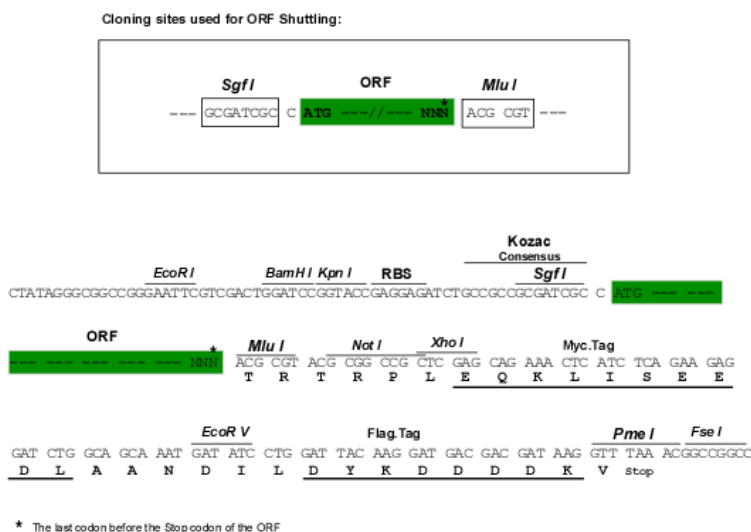
```
MEKARRGGDGVPRGPVLHIVVVGFHKKKGCQVEFSYPPLIPGDGHSHTLPEEWKYL PFLALPDGAHNYQ
EDTVFFHLPPRNGNGATVFGISCYRQIEAKALKVRQADITRETVQKSVCVL SKLPLYGLLQAKLQLITHA
YFEEDKFSQISILKEL YEHMNSSLGGASLEGSQVYLGLSPRDLVLHFRHKVLI LFKLILLEKKVLFYISP
VNKLVGALMTVLSLFPGMIEHGLSDCSQYRPRKSMSEDDGLQESNPCADDFVSASTADVSHNTLGTIRKV
MAGNHGEDAAMKTEELFQVEDSSKGQEPNDTNQYLKPPSRPSDSESSEWETLDPSVLEDPNLKEREQL
GSDQTNLFPKDSVPSESLPITVQPQANTGQVVLIPGLISGLEEDQYGMPLAIFTKGYLCLPYMALQQHHL
LSDVTVRGFVAGATNILFRQKHLSDAIVEVEEALIQIHDPRLKLLNPTTADLRFADYLVRHVTEENRDD
VFLDGTGWEGDEWIRAQFAVYIHALLAATLQLDNEKILSDYGTTFVTAWKNTHNYRVWNSNKPALAEI
NPNHPFQQQYSVSDMKLRFSHSVQNSERGGKIGNVMVTTSRNVVQTGKAVGQSVGGAFSSAKTAMSSWLS
TFTTSTSQSLTEPPDEKP
```

TRTRP**LEQKLISEEDLA**NDILDYKDDDDKV

**Chromatograms:** [https://cdn.origene.com/chromatograms/mk8017\\_f05.zip](https://cdn.origene.com/chromatograms/mk8017_f05.zip)

**Restriction Sites:** SgfI-MluI

**Cloning Scheme:**



**ACCN:** NM\_015060

**ORF Size:** 1944 bp

**OTI Disclaimer:** The molecular sequence of this clone aligns with the gene accession number as a point of reference only. However, individual transcript sequences of the same gene can differ through naturally occurring variations (e.g. polymorphisms), each with its own valid existence. This clone is substantially in agreement with the reference, but a complete review of all prevailing variants is recommended prior to use. [More info](#)

**OTI Annotation:** This clone was engineered to express the complete ORF with an expression tag. Expression varies depending on the nature of the gene.

**Components:** The ORF clone is ion-exchange column purified and shipped in a 2D barcoded Matrix tube containing 10ug of transfection-ready, dried plasmid DNA (reconstitute with 100 ul of water).

**Reconstitution Method:**

1. Centrifuge at 5,000xg for 5min.
2. Carefully open the tube and add 100ul of sterile water to dissolve the DNA.
3. Close the tube and incubate for 10 minutes at room temperature.
4. Briefly vortex the tube and then do a quick spin (less than 5000xg) to concentrate the liquid at the bottom.
5. Store the suspended plasmid at -20°C. The DNA is stable for at least one year from date of shipping when stored at -20°C.

**RefSeq:** [NM\\_015060.1](#), [NP\\_055875.1](#)

**RefSeq Size:** 2353 bp

**RefSeq ORF:** 1947 bp

**Locus ID:** 23080

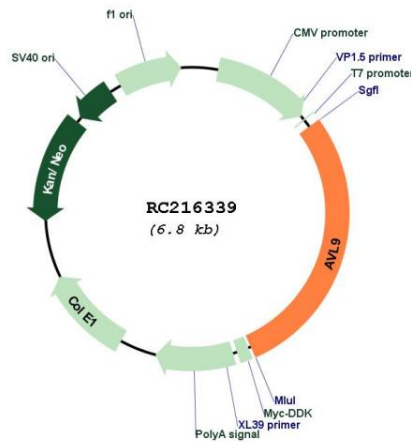
**UniProt ID:** [Q8NBF6](#)

**Cytogenetics:** 7p14.3

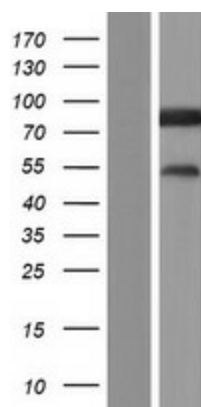
**MW:** 71.8 kDa

**Gene Summary:** Functions in cell migration.[UniProtKB/Swiss-Prot Function]

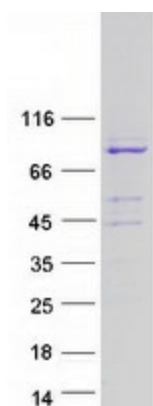
**Product images:**



Circular map for RC216339



Western blot validation of overexpression lysate (Cat# [LY414828]) using anti-DDK antibody (Cat# [TA50011-100]). Left: Cell lysates from untransfected HEK293T cells; Right: Cell lysates from HEK293T cells transfected with RC216339 using transfection reagent MegaTran 2.0 (Cat# [TT210002]).



Coomassie blue staining of purified AVL9 protein (Cat# [TP316339]). The protein was produced from HEK293T cells transfected with AVL9 cDNA clone (Cat# RC216339) using MegaTran 2.0 (Cat# [TT210002]).