

## Product datasheet for **RC216335**

### FCRL4 (NM\_031282) Human Tagged ORF Clone

#### Product data:

Product Type:	Expression Plasmids
Product Name:	FCRL4 (NM_031282) Human Tagged ORF Clone
Tag:	Myc-DDK
Symbol:	FCRL4
Synonyms:	CD307d; FCRH4; IGFP2; IRTA1
Mammalian Cell Selection:	Neomycin
Vector:	pCMV6-Entry (PS100001)
E. coli Selection:	Kanamycin (25 ug/mL)



[View online »](#)

**ORF Nucleotide Sequence:**

>RC216335 representing NM\_031282  
 Red=Cloning site Blue=ORF Green=Tags(s)

TTTTGTAATACGACTCACTATAGGGCGGCCGGAATTCGTCGACTGGATCCGGTACCGAGGAGATCTGCC  
 GCC**CGCATCGCC**

ATGCTGCTGTGGCGTCCTTGCTGGCCTTTGCTCCAGTCTGTGGACAATCTGCAGCTGCACACAAACCTG  
 TGATTTCCGTCCATCCTCCATGGACCACATTCTCAAAGGAGAGAGAGTACTCTGACTTGAATGGATT  
 TCAGTTCTATGCAACAGAGAAAAACAATGGTATCATCAGCACTACTGGGGAGAAAAAGTTGACCCTGACC  
 CCAGGAAACACCCTCGAGGTTCCGGGAATCTGGACTGTACAGATGCCAGGCCCGGGCTCCCCACGAAGTA  
 ACCCTGTGCGCTTGTCTTTTCTCAGACTCCTTAATCCTGCAGGCACCATATTCTGTGTTTGAAGGTGA  
 CACATTGGTTCTGAGATGCCACAGAAGAAGGAAAGAGAAATTGACTGCTGTGAAATATACTTGAATGGA  
 AACATTCTTTCCATTTCTAATAAAAGCTGGGATCTTCTATCCCACAAGCAAGTTCAAATAACAATGGCA  
 ATTATCGATGCATTGGATATGGAGATGAGAATGATGTATTTAGATCAAATTTCAAATAATTAATAATTC  
 AGAACTATTTCCACATCCAGAGCTGAAAGCTACAGACTCTCAGCCTACAGAGGGGAAATCTGTAACCTG  
 AGCTGTGAAACACAGCTTCTCCAGAGCGGTGAGACACCCCACTTCACTTCAACTTCTTCAGAGATGGCG  
 AGGTCATCCTGTGAGACTGGAGCACGTACCCGGAACCTCCAGCTCCAACCGTCTGGAGAGAAAACTCAGG  
 ATCCTATTGGTGTGGTGTGAAACAGTGAAGGGTAAATCCACAAGCACAGTCCCTCGCTACAGATCCAT  
 GTGCAGCGGATCCCTGTGTCTGGGGTGTCTCTGGAGACCCAGCCCTCAGGGGGCCAGGCTGTTGAAGGGG  
 AGATGCTGGTCTTGTCTGCTCCGTGGCTGAAGGCACAGGGGATACCACATTCTCTGGCACCGAGAGGA  
 CATGCAGGAGAGTCTGGGGAGGAAAACCTCAGCGTTCCTGAGAGCAGAGCTGGAGCTCCCTGCCATCAGA  
 CAGAGCCATGCAGGGGATACTACTGTACAGACAGACAACAGCTACGGCCCTGTCCAGAGCATGGTGTCTGA  
 ATGTCACTGTGAGAGAGACCCAGGCAACAGAGATGGCCTTGTGCGCCGGGGAGCCACTGGAGGGCTGCT  
 CAGTGTCTTCTCTCTGGCTGTGGCCCTGCTGTTTCACTGCTGGCGTCGGAGGAAGTCAGGAGTTGGTTTC  
 TTGGGAGACGAAACCAGGCTCCCTCCCGCTCCAGGCCAGGAGAGTCTCCCATCTGCCCTGCC  
 AGGTGGAGCTTCACTCGTTGTATGTTGATGTACACCCAAAAAGGGAGATTTGGTATACTCTGAGATCCA  
 GACTACTCAGCTGGGAGAAGAAGAGGAAGCTAATACCTCCAGGACACTTCTAGAGGATAAGGATGTCTCA  
 GTTGTCTACTCTGAGGTAAGACACAACCCAGATAACTCAGCTGAAAGATCAGCTCTAAGGATGAAG  
 AAAGT

**ACGCGT**ACGCGGCCGCTCGAGCAGAAACTCATCTCAGAAGAGGATCTGGCAGCAAATGATATCCTGGATT  
 ACAAGGATGACGACGATAAGGTTTAA

**Protein Sequence:**

>RC216335 representing NM\_031282  
 Red=Cloning site Green=Tags(s)

MLLWASLLAFAPVCGQSAAAHKPVISVHPPWTTFFKGERVTLTCNGFQFYATEKTTWYHQHYWGEKLT  
 PGNTLEVRESGLYRCQARGSPRNPVRLLFSSDSLILQAPYSVFEGDTLVLRCHRRRKEKLTAVKYTWNG  
 NILSISNKSVDLLIPQASSNNGNYRCIGYDENDVFRSNFKIIKIQELFPHPELKATDSQPTEGNSVNL  
 SCETQLPPERSDTPLHFNFRRDGEVILSDWSTYPELQLPTVWRENSGSYWCGAETVRGNIHKHSPSLQIH  
 VQRIPVSGVLLLETQPSGGQAVEGEMLVVCSVAEGTGDTTFSWHREDMQESLGRKTRSLRAEELPAIR  
 QSHAGGYCTADNSYGPVQSMVLNVTVRETPGNRDGLVAAGATGGLLSALLLAVALLFHCWRRRKS  
 LGDETRLPPAPGPESSHSICPAQVELQSLYVDVHPKGDLYVSEIQTTQLGEEEEANTSRTLLEDKDV  
 VVYSEVKTQHPDNSAGKISSKDEES

**TRTRPLEQKLI**SEEDLAANDILDYKDDDDKV

**Chromatograms:**

[https://cdn.origene.com/chromatograms/mk6200\\_h08.zip](https://cdn.origene.com/chromatograms/mk6200_h08.zip)

**Restriction Sites:**

Sgfl-MluI

**Cloning Scheme:**


**ACCN:** NM\_031282

**ORF Size:** 1545 bp

**OTI Disclaimer:** The molecular sequence of this clone aligns with the gene accession number as a point of reference only. However, individual transcript sequences of the same gene can differ through naturally occurring variations (e.g. polymorphisms), each with its own valid existence. This clone is substantially in agreement with the reference, but a complete review of all prevailing variants is recommended prior to use. [More info](#)

**OTI Annotation:** This clone was engineered to express the complete ORF with an expression tag. Expression varies depending on the nature of the gene.

**Components:** The ORF clone is ion-exchange column purified and shipped in a 2D barcoded Matrix tube containing 10ug of transfection-ready, dried plasmid DNA (reconstitute with 100 ul of water).

- Reconstitution Method:**
1. Centrifuge at 5,000xg for 5min.
  2. Carefully open the tube and add 100ul of sterile water to dissolve the DNA.
  3. Close the tube and incubate for 10 minutes at room temperature.
  4. Briefly vortex the tube and then do a quick spin (less than 5000xg) to concentrate the liquid at the bottom.
  5. Store the suspended plasmid at -20°C. The DNA is stable for at least one year from date of shipping when stored at -20°C.

**RefSeq:** [NM\\_031282.3](#)

**RefSeq Size:** 3459 bp

**RefSeq ORF:** 1548 bp

**Locus ID:** 83417

**UniProt ID:** [Q96PJ5](#)

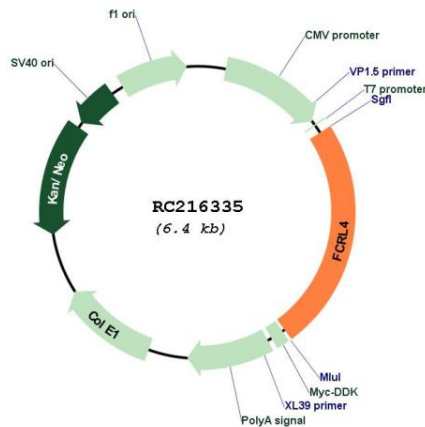
**Cytogenetics:** 1q23.1

**Protein Families:** Transmembrane

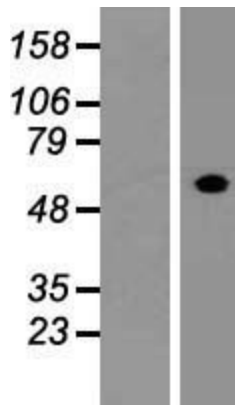
**MW:** 55.2 kDa

**Gene Summary:** This gene encodes a member of the immunoglobulin receptor superfamily and is one of several Fc receptor-like glycoproteins clustered on the long arm of chromosome 1. The encoded protein has four extracellular C2-type immunoglobulin domains, a transmembrane domain and a cytoplasmic domain that contains three immune-receptor tyrosine-based inhibitory motifs. This protein may play a role in the function of memory B-cells in the epithelia. Aberrations in the chromosomal region encoding this gene are associated with non-Hodgkin lymphoma and multiple myeloma. [provided by RefSeq, Apr 2009]

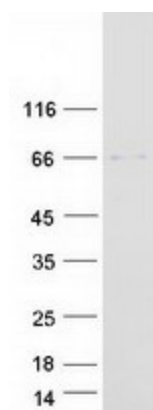
**Product images:**



Circular map for RC216335



Western blot validation of overexpression lysate (Cat# [LY410574]) using anti-DDK antibody (Cat# [TA50011-100]). Left: Cell lysates from untransfected HEK293T cells; Right: Cell lysates from HEK293T cells transfected with RC216335 using transfection reagent MegaTran 2.0 (Cat# [TT210002]).



Coomassie blue staining of purified FCRL4 protein (Cat# [TP316335]). The protein was produced from HEK293T cells transfected with FCRL4 cDNA clone (Cat# RC216335) using MegaTran 2.0 (Cat# [TT210002]).