

Product datasheet for **RC216333**

Bcl G (BCL2L14) (NM_138724) Human Tagged ORF Clone

Product data:

Product Type:	Expression Plasmids
Product Name:	Bcl G (BCL2L14) (NM_138724) Human Tagged ORF Clone
Tag:	Myc-DDK
Symbol:	Bcl G
Synonyms:	apoptosis regulator BCL-G; BCL2-like 14; BCL2-like 14 (apoptosis facilitator); BCLG
Mammalian Cell Selection:	Neomycin
Vector:	pCMV6-Entry (PS100001)
E. coli Selection:	Kanamycin (25 ug/mL)
ORF Nucleotide Sequence:	>RC216333 representing NM_138724 Red=Cloning site Blue=ORF Green=Tags(s)

TTTTGTAATACGACTCACTATAGGGCGGCCGGAATTCGTCGACTGGATCCGGTACCGAGGAGATCTGCC
GCC**CGCATCGC**

ATGTGTAGCACCAGTGGGTGTGACCTGGAAGAAATCCCCCTAGATGATGATGACCTAAACACCATAGAAT
TCAAAATCCTCGCCTACTACACCAGACATCATGTCTTCAAGAGCACCCCTGCTCTTCTCACCAAAGCT
GCTGAGAACAGAAGTTTGTCCCAGAGGGGCTGGGAATTGTTCAAGCAATGAGTCATGGACAGAGGTG
TCATGGCCTTGCAGAAATCCCAATCCAGTGAGAAGGCCATAAACCTTGGCAAGAAAAAGTCTTCTTGG
AAGCATTCTTTGGAGTAGTGGAGAAGGAAGATTGCAGAGCACGCCTGCCAAGGTCTCTGCTCAGGGTCA
AAGGACGTTGGAATACCAAGATTTCGACAGCCAGCAGTGGTCCAGGTGTCTTTCTAACGTGGAGCAGTGC
TTGGAGCATGAAGCTGTGGACCCCAAAGTCATTTCCATTGCCAACCGAGTAGCTGAAATGTTTACTCCT
GGCCACCACCACAAGCGACCCAGGCAGGAGGCTTCAAGTCCAAAGAGATTTTTGTAAGTGGGGTCTCTC
CTTCCAGCTCCAAGGCCACGTGCCTGTAGCTTCAAGTTCTAAGAAAGATGAAGAAGAACAATACTAGCC
AAAATTGTTGAGCTGCTGAAATATTCAGGAGATCAGTTGGAAAGAAAGAAAAAGAAATGGGAGGAGTCAG
CAAAGACCAAGATAAAAAATGGCACTTCTCTGGAGGAGCAGTGGTGGTGGACCCAGAGTTCTGAGTATACC
TGAGGCATTTATGAAGAACAGCTTCACTCTCACCCACCTGGCTTCTCAGAACAACAAT

ACGCGTACGCGGCCGCTCGAGCAGAACTCATCTCAGAAGAGGATCTGGCAGCAAATGATATCCTGGATT
ACAAGGATGACGACGATAAGGTTTAA



[View online »](#)

Protein Sequence: >RC216333 representing NM_138724
Red=Cloning site Green=Tags(s)

MCSTSGCDLEEIPLDDDDLNTIEFKILAYYTRHHVFKSTPALFSPKLLRTRLSQRGLGNCSANESWTEV
 SWPCRNQSSEKAINLGKKKSSWKAFFGVVEKEDSQSTPAKVSAQGORTLEYQDSHSQQWSRCLSNVEQC
 LEHEAVDPKVISIANRVAEIVYSWPPPQATQAGGFKSKEIFVTEGLSFQLQGHVPVASSSKDDEEEQILA
 KIVELLKYSGDQLERKEKEWEESAKTKIKMALLWRSSGGGPRVLSIPEAFMKNSFTLTPPGFSEHN

TRTRPLEQKLISEEDLAANDILDYKDDDDKV

Chromatograms: https://cdn.origene.com/chromatograms/mg2975_d11.zip

Restriction Sites: SgfI-MluI

Cloning Scheme:



ACCN: NM_138724

ORF Size: 828 bp

OTI Disclaimer: The molecular sequence of this clone aligns with the gene accession number as a point of reference only. However, individual transcript sequences of the same gene can differ through naturally occurring variations (e.g. polymorphisms), each with its own valid existence. This clone is substantially in agreement with the reference, but a complete review of all prevailing variants is recommended prior to use. [More info](#)

OTI Annotation: This clone was engineered to express the complete ORF with an expression tag. Expression varies depending on the nature of the gene.

Components: The ORF clone is ion-exchange column purified and shipped in a 2D barcoded Matrix tube containing 10ug of transfection-ready, dried plasmid DNA (reconstitute with 100 ul of water).

Reconstitution Method:

1. Centrifuge at 5,000xg for 5min.
2. Carefully open the tube and add 100ul of sterile water to dissolve the DNA.
3. Close the tube and incubate for 10 minutes at room temperature.
4. Briefly vortex the tube and then do a quick spin (less than 5000xg) to concentrate the liquid at the bottom.
5. Store the suspended plasmid at -20°C. The DNA is stable for at least one year from date of shipping when stored at -20°C.

RefSeq: [NM_138724.1](#), [NP_620050.1](#)

RefSeq Size: 1176 bp

RefSeq ORF: 830 bp

Locus ID: 79370

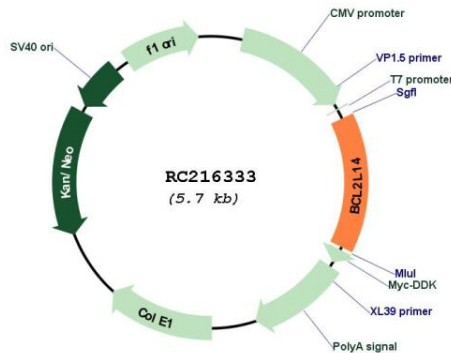
Cytogenetics: 12p13.2

Protein Families: Druggable Genome

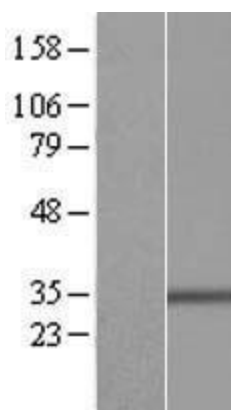
MW: 30.8 kDa

Gene Summary: The protein encoded by this gene belongs to the BCL2 protein family. BCL2 family members form hetero- or homodimers and act as anti- or pro-apoptotic regulators that are involved in a wide variety of cellular activities. Overexpression of this gene has been shown to induce apoptosis in cells. Three alternatively spliced transcript variants encoding two distinct isoforms have been reported for this gene. [provided by RefSeq, May 2009]

Product images:



Circular map for RC216333



Western blot validation of overexpression lysate (Cat# [LY408533]) using anti-DDK antibody (Cat# [TA50011-100]). Left: Cell lysates from untransfected HEK293T cells; Right: Cell lysates from HEK293T cells transfected with RC216333 using transfection reagent MegaTran 2.0 (Cat# [TT210002]).