

Product datasheet for RC216332

MYADM (NM_001020820) Human Tagged ORF Clone

Product data:

| | |
|---------------------------|---|
| Product Type: | Expression Plasmids |
| Product Name: | MYADM (NM_001020820) Human Tagged ORF Clone |
| Tag: | Myc-DDK |
| Symbol: | MYADM |
| Synonyms: | SB135 |
| Mammalian Cell Selection: | Neomycin |
| Vector: | pCMV6-Entry (PS100001) |
| E. coli Selection: | Kanamycin (25 ug/mL) |
| ORF Nucleotide Sequence: | >RC216332 ORF sequence Red=Cloning site Blue=ORF Green=Tags(s) |

TTTTGTAATACGACTCACTATAGGGCGGCCGGAATTCGTCGACTGGATCCGGTACCGAGGAGATCTGCC
GCC**CGATCGC**C

ATGCCAGTGACGGTAACCCGCACCACCATCACAACCACCACGACGTCATCTTCGGGCCTGGGGTCCCCCA
TGATCGTGGGGTCCCCTCGGGCCCTGACACAGCCCCTGGGTCTCCTTCGCCTGCTGCAGCTGGTGTCTAC
CTGCGTGGCCTTCTCGTGGTGGCTAGCGTGGCGCCTGGACGGGGTCCATGGGCAACTGGTCCATGTTCC
ACCTGGTGCTTCTGCTTCTCCGTGACCCCTGATCATCCTCATCGTGGAGCTGTGCGGGCTCCAGGCCCGCT
TCCCCCTGTCTTGCGCAACTTCCCATCACCTTCGCCTGCTATGCGGCCCTTCTGCCTCTCGGCCTC
CATCATCTACCCACCACCTATGTCCAGTTCCTGTCCCACGGCCGTTTCGGGGACCACGCCATCGCCGCC
ACCTTCTTCTCCTGCATCGCGTGTGTGGCTTACGCCACCGAAGTGGCCTGGACCCGGGCCCGCCGGCGG
AGATCACTGGCTATATGGCCACCGTACCCGGGCTGCTGAAGGTGCTGGAGACCTTCGTTGCCTGCATCAT
CTTCGCGTTTCATCAGCGACCCCAACCTGTACCAGCACCAGCCTGCCCTGGAGTGGTGGTGGCGGTGAC
GCCATCTGCTTCATCCTAGCGGCCATCGCCATCCTGTGAACCTGGGGGAGTGCACCAACGTGCTACCCA
TCCCCTTCCCAGCTTCTGTGCGGGCTGGCCTTGCTGTCTGTCTCCTCTATGCCACCGCCCTTGTCT
CTGGCCCTCTACCAGTTCGATGAGAAGTATGGCGCCAGCCTCGCGCTCGAGAGATGTAAGCTGCAGC
CGCAGCCATGCCTACTACGTGTGTGCTGGGACCGCCACTGGCTGTGGCCATCCTGACGGCCATCAACC
TACTGGCGTATGTGGCTGACCTGGTGCCTCTGCCACCTGGTTTTTGTCAAGGTC

ACGCGTACGCGGCCGCTCGAGCAGAAACTCATCTCAGAAGAGGATCTGGCAGCAAATGATATCCTGGATT
ACAAGGATGACGACGATAAGGTTTAA



[View online »](#)

Protein Sequence: >RC216332 protein sequence
Red=Cloning site Green=Tags(s)

MPVTVTRTTITTTTTSSSGLGSPMIVGSPRALTQPLGLLRLLQLVSTCVAFSLVASVGAWTGSMGNWSMF
 TWCFCFSVTLIILIVELCGLQARFPLSWRNFPITFACYAALFCLSASIIYPTTYVQFLSHGRSRDHAIAA
 TFFSCIACVAYATEVAWTRARPEITGYMATVPGLLKVLETFVACIIFAFISDPNLYQHQPALWCVAVY
 AICFILAAIAILLNLGECTNVLPIPFPSFLSGLALLSVLLYATALVWPLYQFDEKYGGQPRRSRDVSCS
 RSHAYYVCAWDRRLAVAILTAINLLAYVADLVHSAHLVFVKV

TRTRPLEQKLISEEDLAANDILDYKDDDDKV

Chromatograms: https://cdn.origene.com/chromatograms/mk6380_c05.zip

Restriction Sites: SgfI-MluI

Cloning Scheme:



ACCN: NM_001020820

ORF Size: 966 bp

OTI Disclaimer: The molecular sequence of this clone aligns with the gene accession number as a point of reference only. However, individual transcript sequences of the same gene can differ through naturally occurring variations (e.g. polymorphisms), each with its own valid existence. This clone is substantially in agreement with the reference, but a complete review of all prevailing variants is recommended prior to use. [More info](#)

OTI Annotation: This clone was engineered to express the complete ORF with an expression tag. Expression varies depending on the nature of the gene.

Components: The ORF clone is ion-exchange column purified and shipped in a 2D barcoded Matrix tube containing 10ug of transfection-ready, dried plasmid DNA (reconstitute with 100 ul of water).

Reconstitution Method:

1. Centrifuge at 5,000xg for 5min.
2. Carefully open the tube and add 100ul of sterile water to dissolve the DNA.
3. Close the tube and incubate for 10 minutes at room temperature.
4. Briefly vortex the tube and then do a quick spin (less than 5000xg) to concentrate the liquid at the bottom.
5. Store the suspended plasmid at -20°C. The DNA is stable for at least one year from date of shipping when stored at -20°C.

RefSeq: [NM_001020820.3](#)

RefSeq Size: 3276 bp

RefSeq ORF: 969 bp

Locus ID: 91663

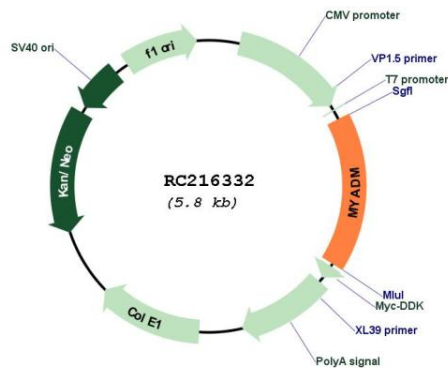
UniProt ID: [Q96S97](#)

Cytogenetics: 19q13.42

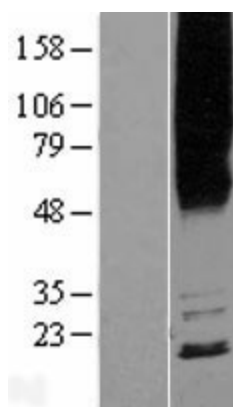
Protein Families: Transmembrane

MW: 35.3 kDa

Product images:



Circular map for RC216332



Western blot validation of overexpression lysate (Cat# [LY422677]) using anti-DDK antibody (Cat# [TA50011-100]). Left: Cell lysates from untransfected HEK293T cells; Right: Cell lysates from HEK293T cells transfected with [RC222301] using transfection reagent MegaTran 2.0 (Cat# [TT210002]).