

Product datasheet for **RC216329**

C18orf34 (CCDC178) (NM_198995) Human Tagged ORF Clone

Product data:

Product Type:	Expression Plasmids
Product Name:	C18orf34 (CCDC178) (NM_198995) Human Tagged ORF Clone
Tag:	Myc-DDK
Symbol:	C18orf34
Synonyms:	C18orf34
Mammalian Cell Selection:	Neomycin
Vector:	pCMV6-Entry (PS100001)
E. coli Selection:	Kanamycin (25 ug/mL)



[View online »](#)

ORF Nucleotide Sequence:

>RC216329 representing NM_198995
 Red=Cloning site Blue=ORF Green=Tags(s)

TTTTGTAATACGACTCACTATAGGGCGGCCGGAATTCGTCGACTGGATCCGGTACCGAGGAGATCTGCC
 GCC**CGCATCGCC**

ATGACTGAAAACAAGACAGTTCCTCTTCTCCACTAGAGATGATCAAACCAATATAGTTTAACATGTC
 AGGAAGTAAAGGCTCTCAGAGAGAAGGCATGGTCAAGGACAAATGAAGGCAATGCCATGTCTCAAAGTTT
 GGTCTATATGGAGCCTCTAAGGAGAACAGTGAAGTTTTTCATGAAAGTAAAATGACAAATACTGAAGGG
 GTGAATAAAGGCATTTACTTTAGCTACCATGTGACGTCACAGCTGTGCCGTAGTAAATATTCCAGCAC
 CTTGTGTCAACAAAATGATTTACACATCCAAGATGTGGAGTCCAAAATACAGGAGCATTGAAAAGGTT
 TGAAACTCTTTGAAGAATGGAGCAGAAGCTTCTCCACAAAAGACCTGAAAAGAAGATTGGAGTGAAC
 ACACCAGTGAAAGAGGTCAAACAGGAGAAAAGAGAGATGAAAAGTGTCCAGAGTTAAAGCAGGAAATGG
 AACATTGCTCTCAGAGGCCATTCTGCTCATTAAAAGTCTAGAACTGACCGGGCAGACGCTGAAGAAGC
 TTTAAAACAACAGAGATCAAGAAAGAATATGATTAACATGAAAATGACTCTTGTCAGTCTGAAAACCT
 CAAGAAGTCCCATTGGCTGTGCAGAAAGAATGAGGCCTATTTGAGTGTATAGAATTACAATGGC
 ATCTTGAAGATAAAGCTAATCAACTACAACATTTTGA AAAACAAAAGACAGAGTTAGAAGAAGCAATGC
 AAAGATTCAAGCAGACATAGACTACATGAATGAACATGGCCCTCTACTGGACTCTAAGCAGAATCAGGAA
 CTTCAAGATCTGAAGAACCATTAAAAAAGGAGGTAAAGGACTACACAGAAAAGTTAATGAAG
 AACTTGAAGAAGCTTTAGAAGCCTGTGAAAATGCCAGATTGAAGGCTCAGCAAATTAAGAAGAGATTGA
 TAAGGATATTTACCAGGATGAAAAACCATAGAGGCCTACAAGAGAGAGATATCAACTAACAGTCTA
 TTTGATCATTACTCTTCATCAGTGATAAATGTTAATACTAATATTGAGGAGAAGGAAGGAAAGTACTG
 AAGCAATAAGGGAAAACAAAGTCATCAAAAATGAATTACATTCTCTATCAAAAATGCTGGAAGATTGAG
 AAGAGTTTATGACCAACTAACCTGGAAGCAAAAAGTCAAGAAAATCAGTATCTGGAAGCAGTTAATGAT
 TTTTATGCTGCAAAAAAACATGGGATATTGAGCTTTCTGATGTTGCAAAAAGATTTTTCAGCTATTTCTT
 TGGCATGTACAAAAGTACGGAAGACAATAAAAACTTGAGATTGATATTAACAAAATAACAGTAAAAAC
 CAATGAAAGCATAACGAAAAAATCAAAAATCGAATCTGAAATAAAATATTTGACAATAATGAAGTTAAAG
 AATGATAAACATCTCAAGAACATCTATAAGGAGGCTTATCGCATTGGTACTCTTTTCCACCTAACAAAAC
 ACAAGACAGATGAAATGGAAGATAAAATAGCAGAAGTGAAGAAGAAAGTTCAAGGGTAGAGAAGAATTCT
 GAAAAAAGTCACTCAAGGTGAAGTGGCTGCTGGAATGGTCTTCAGAAAAAATATTTCCATTTACGAA
 GTCCAGGCACTTGAGCGGAAAGAGCTTAAAAAATAGAGCAATATGTGCCATGTCACTGGCAGAACTAC
 AGGAACCTCTGCTTCAACTAGAAGATGAAGCTGAAAGAATCAGAAGTCTCGACAAAAGAATCTGTTAG
 TAAACGCTCAGCAATTTTAAAGACCTAGAAGCAACTAAAAGTAAAGACAATGATTTTTATGCAAAAATA
 AATGAATTGAATGAGGAATTAAGCAAAAAGAAAGAAAAGAAAAGTTTGGATCAGACACTTGAATAT
 TAAAGAACAATTTATAACTATGAGATTTAAAAGGGAACATGCACAACTGTGTTGATCATTATATGCA
 AGAGAAAAAGACTGTGAAGAGAGAACTTTGAGGAAGATCAGAGATTTAGAGTGTCTCTTGTGTGAAGA
 CAAAAAAGTCTTCAAGTACCCAAAAAATAAGCTGATTCACCTGAAGAAAATCTGCGTTTAGCTCAAG
 AGTATCAACAGCTACAGATTACATTTAAAAGAAAAGGACAATATTTCAATATATATGATAAACAGCT
 ATCACTTGATACTTCAATTAGAGATAAGAAACAGCTCTGTCAGCTGCAGAGAAGGATGCACACACTGTGG
 CAGGAGCACTTCAAAGTGGTGGTCTCTTCAGCCAGATGAGGCTGGCCAACTTCCAGACAGACTCTCAGG
 AGAGTATTCAGAAAATATTAGCTGTGCAGGAGGAATCTTCAAATTAATGCAACACATCTTAGGTTTCTT
 CCAGACTTTGACAGATGGCACATGCGAAAACGATGGT

ACGCGTACGCGGCCGCTCGAGCAGAACTCATCTCAGAAGAGGATCTGGCAGCAAATGATATCCTGGATT
 ACAAGGATGACGACGATAAGGTTTAA

Protein Sequence: >RC216329 representing NM_198995
Red=Cloning site Green=Tags(s)

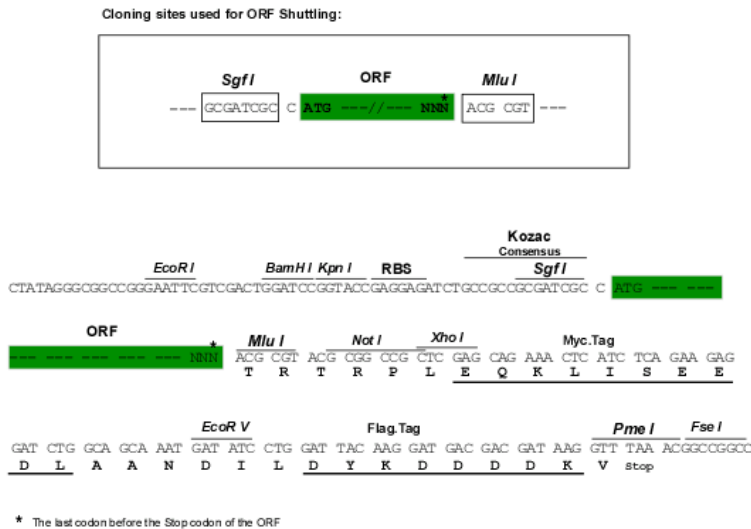
MTENKTVSSSTRDDQTNIGLTCQEVKALREKAWRSRTNEGNAMSQSLVLYGASKENSEGFHESKMTNTEG
VNKGIYFSYPCRRHSCAVVNIPAPCVNKMISHIQDVESKIQEHLKRFETSFEWRSRTSSTKDLKEDWSVT
TPVKEVKPGEKRDEKCEPKQEMETLLSEAIRLIKSLTDRADAEALQQRSRKNMINMKIDSWSVWKL
QELPLAVQKEHEAYLSDVIELQWHLLEDKANQLQHFQKQTELEENAKIQADIDYMNEHGPLLDSKQEQE
LQDLKNHYKKMEVMDLHRKVNEELEALEACENARLKAQQIKKEIDKDIYQDEKTEIAYKREIYQLNSL
FDHYSSVINVTNIEEKEEEVTEAIRETKSSKNELHSLSKMLEDLRRVYDQLTWKQKSHENQYLEAVND
FYAAKKTWDIELSDVAKDFSAISLACTKLTEDNKKLEIDINKITVKTNESIRKKSKEYESEIKYLTIMKLL
NDKHLKNIYKEAYRIGTLFHLTKHKTDEMEDI AEVRRKFKGREFLKKLTQGEVAAGMVLQKKLYSIYE
VQALERKELIKNRAICAMSLAELQEPLLQLEDEAERIRSLDKEHSVSKRS AIFKDLEATKSKTMIFYAKI
NELNEELKAKKEEKKSFQDTLEILKNKFI TMRFKREHAQTVFDHYMQEKKDCEERIFEEDQRFVLLAVR
QKTLQDTQKIIADSLEENLRLAQEYQQLQITFLKEKDNYFNIDYKQLSLDTSIRDKKQLCQLQRRMHTLW
QEHFKLVVLFQSMRLANFQTDSESIQILAVQEESSNLMQHILGFFQTLTDGTCENDG

TRTRPLEQKLI SEEDLAANDILDYKDDDDKV

Chromatograms: https://cdn.origene.com/chromatograms/mk8017_f07.zip

Restriction Sites: Sgfl-Mlul

Cloning Scheme:



ACCN: NM_198995

ORF Size: 2487 bp

OTI Disclaimer: The molecular sequence of this clone aligns with the gene accession number as a point of reference only. However, individual transcript sequences of the same gene can differ through naturally occurring variations (e.g. polymorphisms), each with its own valid existence. This clone is substantially in agreement with the reference, but a complete review of all prevailing variants is recommended prior to use. [More info](#)

OTI Annotation: This clone was engineered to express the complete ORF with an expression tag. Expression varies depending on the nature of the gene.

Components: The ORF clone is ion-exchange column purified and shipped in a 2D barcoded Matrix tube containing 10ug of transfection-ready, dried plasmid DNA (reconstitute with 100 ul of water).

Reconstitution Method:

1. Centrifuge at 5,000xg for 5min.
2. Carefully open the tube and add 100ul of sterile water to dissolve the DNA.
3. Close the tube and incubate for 10 minutes at room temperature.
4. Briefly vortex the tube and then do a quick spin (less than 5000xg) to concentrate the liquid at the bottom.
5. Store the suspended plasmid at -20°C. The DNA is stable for at least one year from date of shipping when stored at -20°C.

RefSeq: [NM_198995.3](#)

RefSeq Size: 3087 bp

RefSeq ORF: 2490 bp

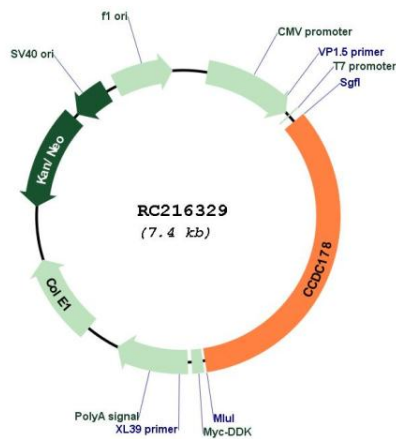
Locus ID: 374864

UniProt ID: [Q5BJE1](#)

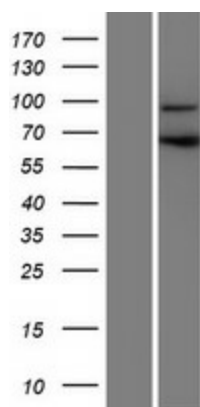
Cytogenetics: 18q12.1

MW: 97.4 kDa

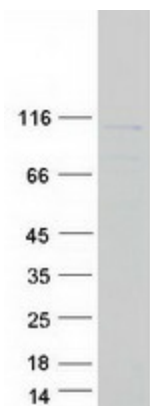
Product images:



Circular map for RC216329



Western blot validation of overexpression lysate (Cat# [LY404708]) using anti-DDK antibody (Cat# [TA50011-100]). Left: Cell lysates from untransfected HEK293T cells; Right: Cell lysates from HEK293T cells transfected with RC216329 using transfection reagent MegaTran 2.0 (Cat# [TT210002]).



Coomassie blue staining of purified CCDC178 protein (Cat# [TP316329]). The protein was produced from HEK293T cells transfected with CCDC178 cDNA clone (Cat# RC216329) using MegaTran 2.0 (Cat# [TT210002]).