

Product datasheet for **RC216328**

EMILIN3 (NM_052846) Human Tagged ORF Clone

Product data:

Product Type:	Expression Plasmids
Product Name:	EMILIN3 (NM_052846) Human Tagged ORF Clone
Tag:	Myc-DDK
Symbol:	EMILIN3
Synonyms:	C20orf130; dj620E11.4; EMILIN5
Mammalian Cell Selection:	Neomycin
Vector:	pCMV6-Entry (PS100001)
E. coli Selection:	Kanamycin (25 ug/mL)



[View online »](#)

**ORF Nucleotide
Sequence:**

>RC216328 representing NM_052846
 Red=Cloning site Blue=ORF Green=Tags(s)

TTTTGTAATACGACTCACTATAGGGCGGCCGGGAATTCGTCGACTGGATCCGGTACCGAGGAGATCTGCC
 GCC**CGCATCGCC**

ATGGGCCCGCCCGCTGCTCGTCTGGCTGTGCGCCGTGCGGCCGTGCTCTCGGGGCGCAGGCCAGGG
 GCACCCCGCTCCTGGCGCGGCCCTGCGCCGCCCGGTGCCTCCCGCTACAGTCTCTACACGACGGGATGGCG
 CCCGCGGCTGCGCCCGGGCCGCAACAAGCCCTCTGTGCCTATGTGGTGACAGGAATGTGACCTGCATC
 CTACAGGAGGGAGCGGAGAGCTACGTAAGGCTGAATACCGGCAGTGTAGATGGGGGCCAAGTGCCCG
 GGACAGTCACGTACCGCACGTAAGTCTCAGACCCAAATACAAGTTGGCTACAAGACAGTGACAGACCTCGC
 CTGGCGTTGCTGTCCCGCTTCACTGGGAAACGCTGCCCTGAGCACCTCACGGACCATGGGGCTGCCTCA
 CCCCAGCTGGAGCCTGAGCCTCAGATTCCTTCAGGGCAGCTGGACCCAGGCCCCAGGCCCTTCTTACA
 GCAGAGCAGCCCCAGCCCTCATGGAAGGAAAGGCCAGGGCTGTTTGGTGAGCGGCTGGAACGCTGGA
 GGGTGATGTCAGCGCCTGGCTCAAACATATGGTACCCTCAGTGGCCTGGTGGCTAGCCACGAGGATCCC
 AACAGGATGACTGGTGGCCCCAGGGCTCCTGCTGTCCCTGTGGGCTTTGGGGTATCCCTGAGGGGCTTG
 TGGGCCAGGAGACAGAGCCAGAGGGCCACTAACACCTCCCTTAGACGAGATCCTAAGCAAGGTGACAGA
 GGTGAGCAACTCTTACAGCAAGGTGCAGTCTTAGACAAGGTGCATGGGCTGGCACTTGGCCATGAG
 GCCACCTGCAGCGGCTGCGGGAAGCCCCACCATCCCCGCTCACCTCCCTGGCCCTGCTGGAGGAGTACG
 TGGACCGACGGCTGCACCGACTCTGGGGAGCCTGCTGGATGGCTTTGAGCAGAAGCTGCAAGGCGTCCA
 GAGTGAGTGTGACCTGCGGGTGCAGGAGGTACGGCGGCAATGTGAGGAGGGTCAAGCCCGCAGCCGAGG
 CTGCACAGAGCCTTGTGCGCGGAGCTGGCCCTGCGCCAGGAGCTGTACAGCTGGCCAGCCAGCTGC
 AGGGCCTGAGCGTGTCTGGCAGGGCAGCTGCTGTGGCAACTAGCCTTGATCAATGCCCGTATGGATGG
 CCTTGAGAGGGCCCTGCAGGCAGTCACCGAGACCCAAAGGGGCCCGGTGCCCGGCCGGGATGAGCTT
 ACGAGGCTCTCTGCTGCCATGCTCGAGGGAGGTGTGGACGGGCTGCTTGGGGTCTGGAGACGCTCAATG
 GGACAGAGGGTGGAGCAAGGGGATGCTGTCTGAGGTTGGACATGGGGGGTGGGAGTGGGCGGCTTTGG
 GACCATGCTGGAAGAGCGCTGCAGAGCCTCGAGGAGCGCCTAGCAACATTGGCTGGGGAGCTAAGCCAT
 GACAGCGCCTCTCCGGCAGGTGAGCTCGGCCCTTGTACAGACAGAGCTGGCTGTGCTAGAGCAACGGT
 TGGTCTCACTGGAGACTTCGTGCACCCCGAGCACCACTCAGCCATCCTGGACAGCCTCGTGGCAGAGGT
 GAAGGCCTGGCAGAGCCGAGCGAGGCCCTCTACGCCAGGTGGCCAGCCAGCAGCACTGCTCCAGCAG
 CTAATGGCACTGTGGCCGAGGTCCAGGGACAGCTGGCAGAAGGGACGGGAGCTCACTTCAAGGCGAGA
 TCACTCTGCTCAAGGTCAATCTGAACCTCAGTGAGCAAGTGCCTCACAGGCCTCAGTGACTCTGTAGCCA
 GACTCTGATGCCTTCTTGGCTGCCAACACGTCCTGGATGAGCGGGAACGCAAGGTGGAAGCCGAAGTC
 CAGGCCATCCAGGAGCAGGTGAGCAGCAAGGCTCCAGGCTTCAAGGCTGGCCACAGGCAGGTCTGAACC
 TGCGTGGGGAGCTGGAGCAACTCAAGGCTGGTGTGGCCAAAGTGGCCAGTGGGCTGAGCCGCTGCCAGGA
 CACAGCCAGAACTTACGACACAGTGGGACACTTTGACCAGCGGGTGGCACAAGTGGAGGGTGGCTGC
 AGGAGGCTGGGCTGCTGGCCCGGGCCTGGACAGCTTGGCCACTGAGCCACTGAGGCCAGAGAGGGCC
 TGTGGAGCCATGTGGACAGCTGAATCGTACGCTGGCCAGCACACGCAGGACATTGCCCGCTCCGGGA
 TGACCTACTGGACTGCCAGGCCAGCTGGCTGAGCAGGTGCGGCCAGGGCAAGCCAAC

ACGCGTACGCGGCCGCTCGAGCAGAACTCATCTCAGAAGAGGATCTGGCAGCAATGATATCCTGGATT
 ACAAGGATGACGACGATAAGGTTAA

Protein Sequence: >RC216328 representing NM_052846
Red=Cloning site Green=Tags(s)

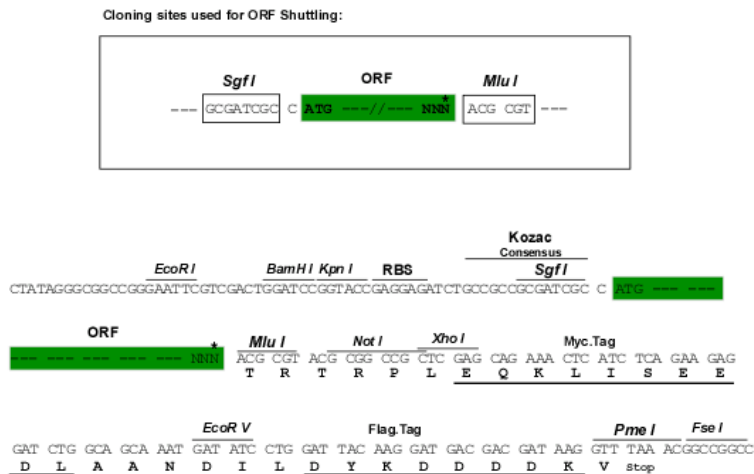
MGRRRLLVWLCVAALLSGAQARGTPLLARPAPPASRYSLYTTGWRPRLRPGPHKALCAYVVRNVTCL
 LQEGAESYVKAERYQCRWGPCKPGTVTYRTVLRPKYKVGKTVTDLAWRCCPGFTGKRCPEHLTDHGAAS
 PQLEPEPQIPSGQLDPGPRPPSYSRAAPSPHGRKGPGLFGERLERLEGDVQRLAQTYGTLSGLVASHEDP
 NRMTGGPRAPAVPVGFGVIEPEGLVGPGRARGPLTPPLDEILSKVTEVSNTLQTKVQLLDKVVHGLALGHE
 AHLQRLREAPPSPLTSLALLEEYVDRRLHRLWGSLLDGFQKLGQVQSECDLRVQEVRRQCEEGQAASRR
 LHQSLDGRELALRQELSQLGSQQLGLSVSGRGSCGQLALINARMDGLERALQAVTETQRGPGAPAGDEL
 TRLSAAMLEGGVDGLLEGLETLNGTEGGARGCCLRLDMGGWVGFGTLMLEERVQSLEERLATLAGELSH
 DSASPGRSARPLVQTELAVLEQRLVSLTCTPSTTSAILDLSVAEVKAWQSRSEALLRQVASHAALLQQ
 LNGTVAEVQQLAEGTGSSLQGEITLLKVNLSVSKSLTGLSDSVSQSDAFLAANTSLDERERKVEAEV
 QATIQEQVSSQGSRLQAGHRQVLNLRGELEQLKAGVAKVASGLSRCQDTAQKLQHTVGHFDQRVAQVEGAC
 RRLGLLAAGLDSLPTPLRPREGLWSHVDQLNRTLQHTQDIARLRDDLLDCQAQLAEQVRPGQAN

TRTRPLEQKLISEEDLANDILDYKDDDDKV

Chromatograms: https://cdn.origene.com/chromatograms/mk8011_g01.zip

Restriction Sites: SgfI-MluI

Cloning Scheme:



* The last codon before the Stop codon of the ORF

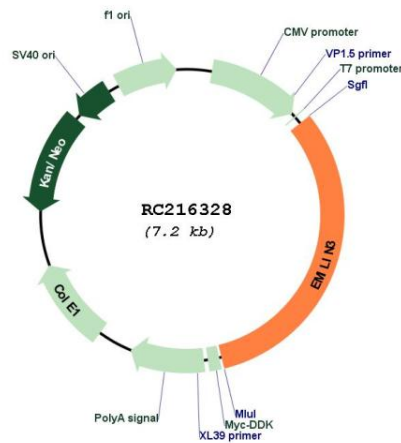
ACCN: NM_052846

ORF Size: 2298 bp

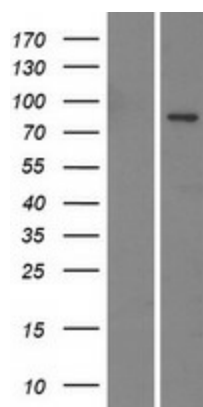
OTI Disclaimer: The molecular sequence of this clone aligns with the gene accession number as a point of reference only. However, individual transcript sequences of the same gene can differ through naturally occurring variations (e.g. polymorphisms), each with its own valid existence. This clone is substantially in agreement with the reference, but a complete review of all prevailing variants is recommended prior to use. [More info](#)

OTI Annotation: This clone was engineered to express the complete ORF with an expression tag. Expression varies depending on the nature of the gene.

Components:	The ORF clone is ion-exchange column purified and shipped in a 2D barcoded Matrix tube containing 10ug of transfection-ready, dried plasmid DNA (reconstitute with 100 ul of water).
Reconstitution Method:	<ol style="list-style-type: none">1. Centrifuge at 5,000xg for 5min.2. Carefully open the tube and add 100ul of sterile water to dissolve the DNA.3. Close the tube and incubate for 10 minutes at room temperature.4. Briefly vortex the tube and then do a quick spin (less than 5000xg) to concentrate the liquid at the bottom.5. Store the suspended plasmid at -20°C. The DNA is stable for at least one year from date of shipping when stored at -20°C.
RefSeq:	NM_052846.2
RefSeq Size:	3827 bp
RefSeq ORF:	2301 bp
Locus ID:	90187
UniProt ID:	Q9NT22
Cytogenetics:	20q12
Protein Families:	Secreted Protein
MW:	82.5 kDa

Product images:

Circular map for RC216328



Western blot validation of overexpression lysate (Cat# [LY409456]) using anti-DDK antibody (Cat# [TA50011-100]). Left: Cell lysates from untransfected HEK293T cells; Right: Cell lysates from HEK293T cells transfected with RC216328 using transfection reagent MegaTran 2.0 (Cat# [TT210002]).