

Product datasheet for RC216325

WDR82 (NM_025222) Human Tagged ORF Clone

Product data:

Product Type:	Expression Plasmids
Product Name:	WDR82 (NM_025222) Human Tagged ORF Clone
Tag:	Myc-DDK
Symbol:	WDR82
Synonyms:	MST107; MSTP107; PRO2730; PRO34047; SWD2; TMEM113; WDR82A
Mammalian Cell Selection:	Neomycin
Vector:	pCMV6-Entry (PS100001)
E. coli Selection:	Kanamycin (25 ug/mL)
ORF Nucleotide Sequence:	>RC216325 representing NM_025222 Red=Cloning site Blue=ORF Green=Tags(s)

TTTTGTAATACGACTCACTATAGGGCGGCCGGAATTCGTCGACTGGATCCGGTACCGAGGAGATCTGCC
GCC**CGATCGCC**

ATGAAGCTGACCGACAGCGTGTTCGGAGCTTCCGCGTCGCTAAGGTGTTCCGCGAAAACCTCGGACAAGA
TTAACTGCTTCGATTTTCAGCCCCAACGGCGAGACGGTCATCTCGAGTAGCGACGACGACTCCATCGTGCT
CTATGACTGCCAGGAGGGCAAACCAAGAGAACCCTGTACAGTAAGAAAATGGTGTGGACCTCATCAGA
TACTCATGCAGCAAACACAGTTGTTTACAGCTCTAACAAAATAGACGATACTATTCGTTACTTGTCTCT
TGCATGACAACAATACATCAGATACTTCTGGACATAGCAAAAGGGTGGTGGCCTTGCCATGTCACC
TGTGGATGACACTTTCATTTCTGGGTCTTTGATAAGACCATTGACTCTGGGATCTCCGGTCTCCTAAC
TGCCAGGGCCTCATGCATCTGCAGGGGAAGCCAGTTTGTCTTTTATCCAGAAGGGTTAATTTTCGCTG
CAGGTGTCAACTCTGAAATGGTCAAGCTTTATGACCTTCGTTCTTTTATGAAAGGGCCATTTGCTACCTT
TAAGATGCAGTATGATCGAACTTGTGAGTGGACAGGACTTAAATTCAGCAATGATGGCAAGCTCATCCTC
ATTTCCACCAACGGCAGCTTCATTCGTCTGATTGATGCATTCAAAGGAGTGGTGTGCACACATTTGGGG
GTTATGCCAACAGCAAAGCTGTCACTGGAGGCTTCAATTTACTCCAGACTCTCAGTTTATTATGATTGG
TTCAGAGGATGGCAAGATCCATGTCTGGAATGGAGAGCGGTATAAAAGTAGCTGTGTTGGATGGTAAA
CACACAGGCCCGATTACCTGTTTGAATTCACCCCAAGTTCATGACTTTTGCCAGTGGCTGTTCCAACA
TGGCCTTTTGGTTGCCACCATTGATGAC

ACGCGTACGCGGCCGCTCGAGCAGAAAACCTCATCTCAGAAGAGGATCTGGCAGCAAATGATATCCTGGATT
ACAAGGATGACGACGATAAGGTTTAA



[View online »](#)

Protein Sequence: >RC216325 representing NM_025222
Red=Cloning site Green=Tags(s)

MKLTDSVLRFRVAKVFRENSDKINCFDFSPNGETVISSDDDSIVLYDCQEGKPKRTLYSKKYGVDLIR
 YTHAANTVVYSSNKIDDTIRYLSLHDNKYIRYFPGHSKRVVALSMPVDDTFISGSLDKTIRLWDLRSPN
 CQGLMHLQGKPVCSFDPEGLIFAAGVNSEMVKLYDLRSFDKGPFAATFKMQYDRTCEWTGLKFSDNGKLI
 ISTNGSFIRLIDAFKGVVMHTFGGYANSKAVTLEASFTPDSQFIMIGSEDGKIHVWNGESGIKVAVLGDK
 HTGPITCLQFNPKFMTFASACSNMAFWLPTIDD

TRTRPLEQKLISEEDLAANDILDYKDDDDKV

Chromatograms: https://cdn.origene.com/chromatograms/mk8017_f09.zip

Restriction Sites: SgfI-MluI

Cloning Scheme:

Cloning sites used for ORF Shuttling:



* The last codon before the Stop codon of the ORF

ACCN: NM_025222

ORF Size: 939 bp

OTI Disclaimer: The molecular sequence of this clone aligns with the gene accession number as a point of reference only. However, individual transcript sequences of the same gene can differ through naturally occurring variations (e.g. polymorphisms), each with its own valid existence. This clone is substantially in agreement with the reference, but a complete review of all prevailing variants is recommended prior to use. [More info](#)

OTI Annotation: This clone was engineered to express the complete ORF with an expression tag. Expression varies depending on the nature of the gene.

Components: The ORF clone is ion-exchange column purified and shipped in a 2D barcoded Matrix tube containing 10ug of transfection-ready, dried plasmid DNA (reconstitute with 100 ul of water).

Reconstitution Method:

1. Centrifuge at 5,000xg for 5min.
2. Carefully open the tube and add 100ul of sterile water to dissolve the DNA.
3. Close the tube and incubate for 10 minutes at room temperature.
4. Briefly vortex the tube and then do a quick spin (less than 5000xg) to concentrate the liquid at the bottom.
5. Store the suspended plasmid at -20°C. The DNA is stable for at least one year from date of shipping when stored at -20°C.

RefSeq: [NM_025222.4](#)

RefSeq Size: 4292 bp

RefSeq ORF: 942 bp

Locus ID: 80335

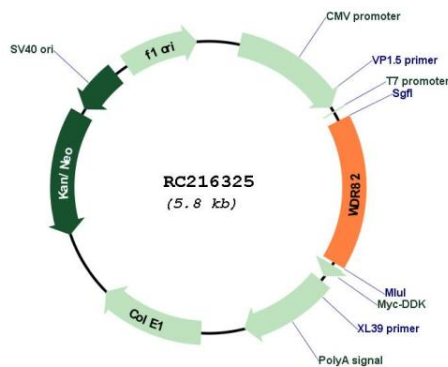
UniProt ID: [Q6UXN9](#)

Cytogenetics: 3p21.2

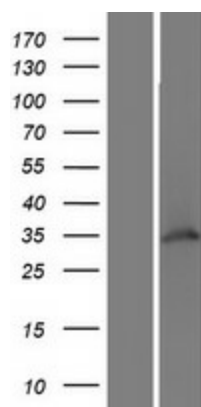
MW: 34.9 kDa

Gene Summary: TMEM113 (WDR82) is a component of the mammalian SET1A (MIM 611052)/SET1B (MIM 611055) histone H3-Lys4 methyltransferase complexes (Lee and Skalnik, 2005 [PubMed 16253997]; Lee et al., 2007 [PubMed 17355966]).[supplied by OMIM, Jul 2010]

Product images:



Circular map for RC216325



Western blot validation of overexpression lysate (Cat# [LY410770]) using anti-DDK antibody (Cat# [TA50011-100]). Left: Cell lysates from untransfected HEK293T cells; Right: Cell lysates from HEK293T cells transfected with RC216325 using transfection reagent MegaTran 2.0 (Cat# [TT210002]).